

parklands

VOLUME 10

the magazine of the centennial park & moore park Trust

AUTUMN 2000



autumn contents

- 4 Leading by example
- 5 On your marks
- 6 Fountain flows again
- 7 Now and then
- 8 Celebration of the nation
- 10 Generations of equine entertainment
- 12 Friends of the Parklands
- 14 Autumn events
- 15 School holidays program
- 16 Centennial Parklands User's Guide



Parklands Magazine is published quarterly by the Centennial Park & Moore Park Trust
Locked Bag 15, Paddington NSW 2021.
email: cptrust@hotmail.com

Editor: Catriona Burgess

Contributors: Georgia Stynes, Grainne Murphy

Design: Global Graphics

Photography: Ian Lever

Printed on recycled paper

Trust Members: Annette O'Neill (Chairman), Phillip Black, Jill Hickson, Michael Marx AM, John Walker, Bob Wilson.

Directions



The remodelling of Sydney's inner city trafficways has had an impact on the Parklands, particularly during popular events. The intensive summer sports program at the Sydney Cricket Ground, a successful season of Circus Oz,

and traffic into the new Fox Studios complex combined to focus attention and movement into the area.

We have worked collaboratively with traffic and transport agencies, local authorities and neighbouring venues to develop traffic management plans which I believe have been

positive in reducing intrusion and impact for residents and regular visitors.

With the Eastern Distributor now running, a major schedule of work has begun in Moore Park to improve existing facilities, and create new ones.

A new formal entrance is planned for Moore Park at Greens Road, with the relocation of the Comrie Fountain as a major centrepiece. This is a wonderful example of Victorian public sculpture and was designed to satisfy the thirst of 'man, horse and dog'.

The western edge of Moore Park will be better defined with new bollards, banner poles at key locations, and two new amenities blocks.

New recreation spaces are emerging. The north western area of Moore Park, most recently used as a depot by contractors working on the Distributor, will become a passive recreation area, and Bat and Ball will become more of a 'village green' location. A new 2.5 kilometre cycleway will traverse Moore Park, and link with the regular cycle network in Sydney. As well as the new toilet blocks, extensive irrigation systems and new park furniture are also being installed. Quality playing fields and substantial tree plantings will occur throughout.

Preparation for the celebration of the Centenary of Federation sees the second stage of work on Old Grand Drive at the Robertson Road entrance, and work underway on the restoration project for Federation Valley. We are looking forward to Centennial Park's role as the host of Federation Day activity on 2001, and in this issue have an early glimpse of the size and scale of the public celebrations being planned.

As an Olympic venue, we will be under scrutiny when the test event for the marathon takes place in April 2000. It will be an early morning start, therefore we anticipate that it will have little impact on regular Parklands users. Your involvement is encouraged however, as it is a selection event for our Australian athletes.

2000 will be a momentous year and I believe that the Trust and its staff will meet all challenges with the resources we have available to us.

Despite the hard work ahead, I am looking forward to another excellent year, and am confident that we will improve existing, and create new experiences for all visitors to the Parklands.

Peter Duncan

Director, Centennial Park and Moore Park Trust

Parkbench

New members join Consultative Committee

We are pleased to welcome five new members to our Community Consultative Committee:

■ Peter Tzannes – Peter is Chairman of the Centennial Park Residents Association, an umbrella organisation for many of the streets along the western edge of Centennial Park. A local chemist, Peter has taken an active interest in the Parklands for more than 20 years.

■ Janelle McIntosh – Janelle works in the Eastern Suburbs as a carer for people with physical and intellectual disabilities. She has assisted people with disabilities to access the Parklands for recreation, art activities and events. Janelle lives in Elderslie near Camden in Sydney's south, bringing a regional perspective to the Committee.

■ Wayne Morgan – A level 1 running coach and personal trainer, Wayne has a keen interest in the use of the Parklands for sport. Wayne is coach and a key organiser for both the Sydney Front Runners and Athletics East Fun Run Club. He lives in Maroubra and works in human resources.

■ Roger Doyle – Living just a couple of blocks from the south eastern edge of the Parklands, Roger regularly exercises in Centennial, Moore and Queens Parks. He has strong experience in community consultation, particularly due to his current position as the Director Operational Support, New South Wales Fire Brigades. An engineer by profession, Roger has worked

extensively in television and film. He has also been involved in staging major events in public places.

■ Jill Anderson – A lawyer and an academic, Jill specialises in public law and community advocacy. She has worked for organisations such as the Legal Aid Commission of NSW, the Public Interest Advocacy Centre, and Redfern Legal Centre. She also volunteers her services to the Australian Council of Social Service and the Intellectual Disability Rights Service. Jill lives in Randwick. We would also like to thank the Committee's five outgoing members – Jenni Mack, Sally Murray, John Trevillian, Colin Ridley and John Ryan – for their invaluable contribution over the

past few years.

Serving as a forum for community input into decisions about the Parklands, the Community Consultative Committee meets every six weeks and welcomes suggestions from the public. You can contact Committee Chairman, Phillip Black, via the Trust on (02) 9339 6699.

Clean Up Day in the Parklands

Don't forget to join us for Clean Up Australia Day in Centennial Park on Sunday 5 March from 10am until 2pm. "With Centennial Park about to enter the world spotlight for Sydney Olympic events, Clean Up Day is an opportunity for us all to focus on this unique

environment," Trust Director Peter Duncan says.

"It's also a Car Free Day in the Park – so leave the car at home and bring your enthusiasm instead."

Participants should also bring a hat, sunscreen and gloves and wear

covered footwear.

Registration is at the Learners' Cycleway.

Tree Master Plan update

More than half of the suggestions made as part of the community consultation process for the Tree Master Plan (*Parklands, Summer issue*) will be incorporated into the document, Landscape Services Coordinator Peter Nowland says.

"We received nine written submissions with more than 40 suggestions in total.

"Some of the most valuable input covered the need for trees as shade, establishing stronger green links with surrounding areas and screening the surrounding built environment.

"There was also a lot of discussion about creating more native habitat," Peter says.

"While being mindful not to compromise the Parklands' Victorian values, the Plan was always strong on the idea of native habitat in substantial areas of the Parklands. We found that we needed to make this clearer in how the Plan was drafted."

Our thanks to everyone who commented. We expect to finalise the Plan by April 2000.

Be here to make history!

Join photographers Wendy McDougall and Brendan Read as they assemble a gathering in Centennial Park on Sunday 16 April for what they hope will be Sydney's biggest group photo. The image will appear in their book "Portrait of a Park", featured in the last issue of *Parklands*. For full details call (02) 9315 8060.



Walkies!

The RSPCA promises its annual Million Paws Walk fundraiser will be a "day of unlimited fun for the whole family and four legged friends!"

"Mark 21 May in your diary and make sure you register early," says Raelene Redford, Deputy Chief Executive Officer, RSPCA. Centennial Park will once again be the Sydney venue for this event, which is now in its fourth year.

"The Million Paws Walk just gets bigger and better every year, and is an enormously successful fundraising event for the society," says Raelene.

"Anyone can take part – you don't even need a dog! All creatures great and small are welcome as long as they are happy, healthy, on a lead or under control."

If you don't have a canine companion, Raelene suggests bringing a toy animal or, to really get into the spirit of the event, you could even dress up as your favourite pet!

Participants – two and/or four-legged – will enjoy a day of non-stop entertainment with animal aerobic warm-ups, a celebrity three-paws race, face-painting, dog washing, various information stalls, free vet checks and other attractions and exhibitions.

There will be a host of great prizes and giveaways available throughout the day.

"We'll be running fiercely competitive contests to discover the best 'owner/pet look-a-likes' and 'six best legs'. Your pet could even cop a bogus infringement for excessive tail wagging or indecent tongue exposure!" says Raelene.

The Mounted Police will lead the 5km scenic walk around Centennial Park's recently restored ponds area, and the RSPCA has arranged for refreshments and lunch to be available for purchase on the day.

The Premier of NSW, the Honourable Bob Carr, as a Patron of the RSPCA, will officially open the event, which will also be attended by numerous celebrities and their own pet animals.

For further information and a registration pack please telephone: 1800 065 046



Leading by example

The introduction of the new Companion Animals Act in 1998 has been a catalyst for the Centennial Park and Moore Park Trust to conduct a full review of dog activity within the Parklands.

Under the Act, which replaces the Dog Act, the Trust has the same responsibility as local Councils to implement and comply with the legislation in its jurisdiction.

The Parklands' open spaces have long been attractive to dog walkers. Infact the first set of rules and regulations for Park visitors bears similar instruction to those existing today ("all persons bringing dogs within the Park must have them under proper control, and shall not encourage or allow them to enter the water therein").

On-going visitor surveys reveal a growing number of people exercising domestic pets, and commercial canine businesses such as dog walking and training, operating in the Parklands.

The Trust is keen to get feedback from all Park users about the behaviour and movement of dogs in the Parklands.

"Dogs are welcome throughout the

Parklands but they must be under control at all times. There are certain areas where dogs must be on a leash, and others where dogs can be exercised freely. There have been complaints from other user groups when dog owners have failed to comply with these regulations," says Judith Peters, Manager, Corporate Strategy and Policy.

"We have a responsibility to all visitors and users to balance their needs and requirements. When a conflict occurs, it is our task to manage this and achieve outcomes which are acceptable to all. The Trust needs feedback from all Park users so we can conduct a full review which will help produce a policy which ultimately creates a better experience for all dog walkers and, of course, the dogs."

One of the Trust's main tasks is to educate users about areas of the Parklands where dogs can and cannot be walked off leash.

Providing a safe environment for all visitors to enjoy a truly wide diversity of activities is also paramount.

There is a particular need to ensure that dogs and horses do not cause

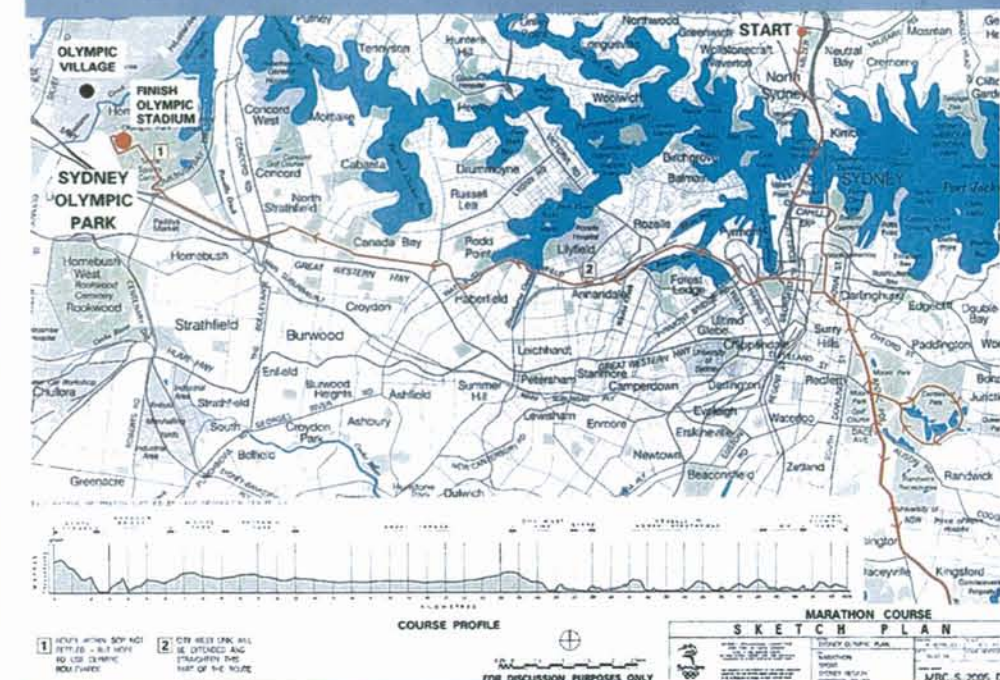
harm to each other, and in turn affect human and vehicle activities. All animals must be controlled by their owners/handlers in order to reduce the risk of accidents and injury to both animals and human visitors.

"We also need to help people understand the impact dogs can have on the Parklands and microenvironments, and what they can do to help minimise damage," Judith explains.

For instance, nutrients from dog droppings enter the ponds, causing adverse effects on the water, and therefore on the fish, birds and other mammals which are part of the ponds' ecosystems. So, by removing your dog's droppings and disposing of them carefully, you will be assisting with the regeneration of the ponds.

"We want to work with dog users to determine how we can best tackle this issue and what facilities the Trust needs to create for dog walkers. We will examine how we can assist with the removal of dog waste, providing a hygienic water supply for animals and other issues, which we invite the public to bring to our attention."

When the review is complete the Trust will produce and distribute new signage and leaflets which detail owners responsibilities, and illustrate areas of the Parklands where dogs can be walked on and off leash.



On your marks...

Testing times for Olympic organisers

SOCOG has been rolling out its program of test events for the Olympics for several months, and Centennial Park comes under scrutiny during The Host City Marathon on Sunday 30 April.

Competitors from approximately 40 countries will be taking part, with 150 invited elite athletes joined by about 5,000 local runners. Runners will set off from North Sydney at 7.00am, and the last runner is expected to exit Centennial Park by 8.30am.

This event will be held in partnership with Athletics Australia, and will incorporate the Australian Marathon Championships and the final selection race for the Australian marathon team for the Sydney 2000 Olympic Games.

"We've only got one opportunity to get it right, and this is why SOCOG has organised 38 separate test events covering the 28 different disciplines which make up Olympic sports. The Host City Marathon will allow us to test the course, the logistics, operations and the volunteers and their roles. It's also a test for athletes, being a selection race for Australian marathon representatives for the Sydney 2000 Olympic Games," says Dave Cumby, SOCOG Competition Manager, Road Events.

The Sydney 2000 course begins in

North Sydney, crosses the Harbour Bridge, goes through the CBD, out to Centennial Park, on to Kingsford before returning through the City and west towards Olympic Park, finishing in the Olympic Stadium at Homebush.

This test event will give members of the public one of the few chances to compete on an Olympic course, as well as being open to runners worldwide. A marathon is raced over a distance of 42.195km (26 miles 385 yards), and is one of the oldest Olympic events, having taken place in every Olympiad since Athens in 1896. There will be a time limit for finishers of five hours.

Organisers have invited 150 elite athletes who have broken the 2.5 hour (men) and 3 hour (women) time limits, as the Olympic event will feature approximately that number of competitors.

Australian participants likely to be catching the selectors' eyes include 1999 City to Surf winner Kerryn McCann, Nickey Carroll, Susan Hobson and Silvania Trampuz, and on the men's team Ray Boyd, Rod de Highden and Lee Tropp, also a former City to Surf winner.

So join us in the Park and make the most of this early opportunity to share the spirit of the Sydney 2000 Olympic Games.

Fountain flows again

Historic marker for new Park entrance

Following the completion of the Eastern Distributor, restoration work has begun in several areas of Moore Park. A major new feature will be the creation of formal entry points to improve pedestrian access and define the Park's boundaries.

A new entrance is planned to link Paddington to Moore Park at Greens Road, and will include the reinstallation of the Comrie Memorial Fountain. The fountain will provide a visible meeting point and landmark for the area, which has heavy visitation for popular events at the Sydney Cricket Ground, and Sydney Football Stadium.

This fountain was commissioned following a public bequest from Mrs Sophia Louisa Comrie with the original specification that it should be a drinking fountain 'for the use of man and beast'.

The original design incorporated water bowls which supplied free, clean, drinking water for humans, their horses and dogs, a subject of public discussion at the time, as can be seen from this letter to *The Sydney Morning Herald*, 28 January 1902:

"Want of water is constantly experienced during this trying summer by thousands of working men, women and children walking the streets of Sydney, who cannot afford to buy even teetotal drinks every time they are thirsty, and the cause of temperance also must be greatly hindered in this city by the difficulty in obtaining a drink of water." J.L.

It is unknown what effect the provision of the fountain had on those fond of an alcoholic beverage, but it did provide drinking water for two and four-legged visitors to the CBD. It was initially erected in Queen's Square, and officially dedicated by the Lord Mayor Alderman Samuel Lees on 27 July 1904.

By 1928, vehicular and human traffic in the St James area was increasing so much the Police Department asked Sydney City Council to consider relocation in the interests of public safety. After much discussion and resolution, it was finally given a new site in Driver Avenue at Moore Park.

The fountain was demounted and removed when work began on the Distributor. A new space is being landscaped for its return, and to mark its prominent role in formalising pedestrian movement and safety in Moore Park.

Landscape Architect Gillian Smart has designed the new entrance, incorporating a drinking bubbler so it will once again be a functioning fountain.

"Previously there were few specific pedestrian entrance



The proposed design for the reinstallation of Comrie Fountain would create a new gateway for pedestrians in Moore Park opposite Greens Road.

points into Moore Park, with people heading into the Park or to sporting events from every direction," she says.

"In creating the setting for the fountain I wanted to create a place which would become a visual marker in people's imaginary map of Moore Park. The fountain site should be a place where people can meet up, and then move on into the Park, becoming a gateway for humans rather than cars."

Gillian's concept draws on 19th century English landscape design in placing architecture within the landscape. This involved creating a green rather than paved setting, and creating a low elevated podium as a setting for the fountain.

"Due to the quality and material of the original Fountain design, it is important that the fountain should not be competing with other elements in the vertical plane."

The fountain itself was made mostly from sawn Bowral trachyte, now a rare commodity, has eight polished Gabo granite columns supporting the dome and is topped by a bronze finial.

"I also wanted to incorporate some elements of the history of Moore Park, which is both fascinating and diverse. When Macquarie proclaimed Sydney's Second Common he proposed that four corner posts be installed to mark the boundaries. The new design includes four small markers, and each has a tree planted next to it. We have also carved part of Macquarie's proclamation into the sandstone markers we're using," says Gillian.

The area surrounding the fountain will have a major planting of grasses, and will also be bisected by the new cycle routes in Moore Park which link with existing Sydney cycle routes.

The Trust will consult with the local community before finalising the design, and is hoping the fountain will be in situ by the end of the year.

Now and Then

It may be difficult to

imagine that the pristine
fairways and greens of

Moore Park Golf Course
were once the site of a

large refuse destructor

and tip.

The refuse destructor stood near where the sixteenth tee
currently stands, and serviced the inner Sydney area
until it was relocated to Pyrmont in 1938.

The first holes in Moore Park Golf Course were laid out in
1907 near the Reschs brewery, and were created using treacle

tins by a group of Scottish golfing enthusiasts.

As popularity of the game grew, work commenced in 1912
on formally laying out a nine-hole golf course at Moore Park.

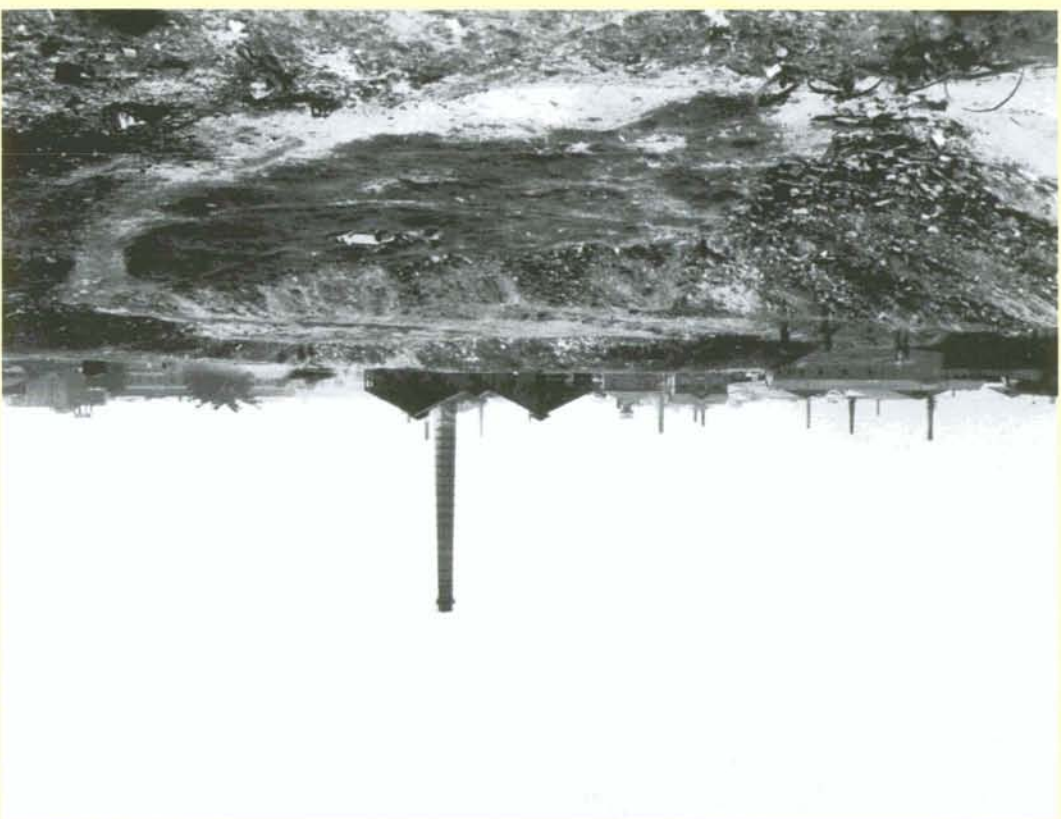
The course opened in 1913.

The Moore Park Golf Club was formed in 1920, and a
further nine holes were added. Duncan McMillian, one of the

More than 60,000 golfers a year now enjoy the public 18 hole course.



Moore Park refuse destructor, 1938. Photo courtesy City of Sydney Council.



Scots who had laid out the first holes, became the founding
Father of the Club, and its first Captain and Secretary from

The first players on the course had much to contend with.

During the Club's early days the greens were fenced to
prevent roaming livestock from damaging the course! But the

biggest problem at the time was the roaring trade in golf ball
theft. Players were losing so many balls that the City of

Sydney Council was forced to employ a course detective to
catch thieves.

By 1938, the City of Sydney Council commissioned Eric
Apperly, famous amateur golfer

and notable golf course architect, to redesign the golf course. His

work was interrupted by World War II and recommenced in 1948.

Apperly's design finally came into effect in 1950, and survived until

1991 when it was replaced by a
course designed by architect Ken

McKay.

In 1996 a total renovation of the
Golf Course was completed. Its

low hills and rolling greens make it
a challenging and enjoyable

experience for over 60,000 golfers
who tee off there annually.

Moore Park is now a
Championship Par 70 Group One

Golf Course, with a three level 60
bay undercover driving range, all
just ten minutes from Sydney's CBD.

Bookings and enquiries can be
made on (02) 9663 1064.

Celebration of the nation

Planning for a nationwide party



Indian troops march under the Wool Arch on Bridge Street during the 1901 Federation Day Parade.

Celebrations on a major scale just keep coming in Australia! After the huge public celebration of the start of the new millennium the whole nation can look forward to our role as host of the world's greatest sporting event, followed by another substantial national event, this time commemorating our own history.

Parklands asked the NSW Centenary of Federation Committee for an early insight into what is being planned for the celebration of a nation.

On Federation Day, 1 January 2001, the New South Wales Centenary of Federation Committee will present a "once in a hundred years celebration for the people of Australia," says Barrie Unsworth, Chair, NSW Federation Committee.

Federation Day marks the start of a year long national program to commemorate our first 100 years, and Centennial Park will be at the centre of the major public event planned for this remarkable day.

"Journey of a Nation – The Federation Parade will be

**Journey of a Nation –
The Federation Parade will
be unlike any event of its
kind ever seen in Australia**

unlike any event of its kind ever seen in Australia," says Mr Unsworth.

"The parade will celebrate and acknowledge the significant historic and momentous achievements and challenges of Australia in the last 100 years, and reflect the

importance of our commemoration of the Centenary of Federation."

Details of the parade will be publicised throughout the year, but at this stage it can be revealed that it will commence at 4pm and feature more than 8,000 participants.

"The parade elements have been designed and coordinated to start with a celebration of indigenous culture and will journey through a series of themes relevant to Australia such as war and peace, sport, industry, construction, culture, lifestyle, communications, Australian spirit and Australian identity.

"It will conclude with a youth element, representing our national future direction.

"The Federation Parade will not be a re-enactment of the



The Federation Float launched on Australia Day 1998

1901 procession, but rather a collaboration of our past, present and future," says Mr Unsworth.

It will travel from the city to Centennial Park along Macquarie Street, onto Prince Albert Street, College Street, Oxford Street, Flinders Street, Anzac Parade and into Grand Drive. It is the major event planned for Sydney, and will be broadcast live on television so that everyone in the country can share the experience. State capitals will have their own civic events staged at different times during 2001.

With over 8000 participants, 2000 crew and volunteers, and 30 floats – including one from each of the States and Territories and 13 regional floats – the parade will be the biggest of its kind in Australia. It will be approximately 3.6 km long and take 90 minutes to pass any one point.

Participants will include performing artists, marching bands, sports people, seniors, youth, dance groups, celebrities, indigenous people, ethnic groups, costumed artists and community organisations.

Tenterfield Main Street, 1901. Tenterfield was the site of Sir Henry Parkes' famous Federation oration in 1889.



Immediately following the parade, the Centennial Ceremony will commemorate the foundation of our nation. It will be held at sunset in Centennial Park and include a 90-minute sequence with a strong sense of story linked with music and images. This ceremony will reflect on the successes and failures of the past, celebrate Australian values such as tolerance and egalitarianism, and share visions for our destiny.

The shape of the performance program is still being established, but will include three unique performance spaces reaching from Federation Valley to north west of the Parade Ground, in Centennial Park.

Over 150,000 people are expected to watch the Centennial Ceremony in the Park along with a national television audience of hundreds of thousands of Australians. Giant screens in the Park and along the parade route will allow many more Sydneysiders to join in and enjoy this spectacular event.

"On Federation Day, 1 January 2001, we will celebrate the journey of a nation, a journey which continues into a new millennium. The New South Wales Centenary of Federation Committee is working in partnership with Centennial Park and Moore Park Trust to present these great events and we hope you will plan to be part of the celebrations," says Mr Unsworth.

The Federation Parade will not be a re-enactment of the 1901 procession, but rather a collaboration of our past, present and future

The GPO forms the backdrop to the Ceremonial Arch, commemorating the visit of Lord Hopetoun, as part of the 1901 parade.



Generations of equine entertainment

Within the walls of the Centennial Park Equestrian Centre is a wide range of activities and people. The C Pavilion – which previously housed the Carlton Clydesdales – has been renovated and is available as a hire venue for a variety of events. And the Centre is also home to Sydney's remaining working single horse lorry – the Penfolds cart.

You can expect pony and horse rides from a Riding School, but a lot more is going on....

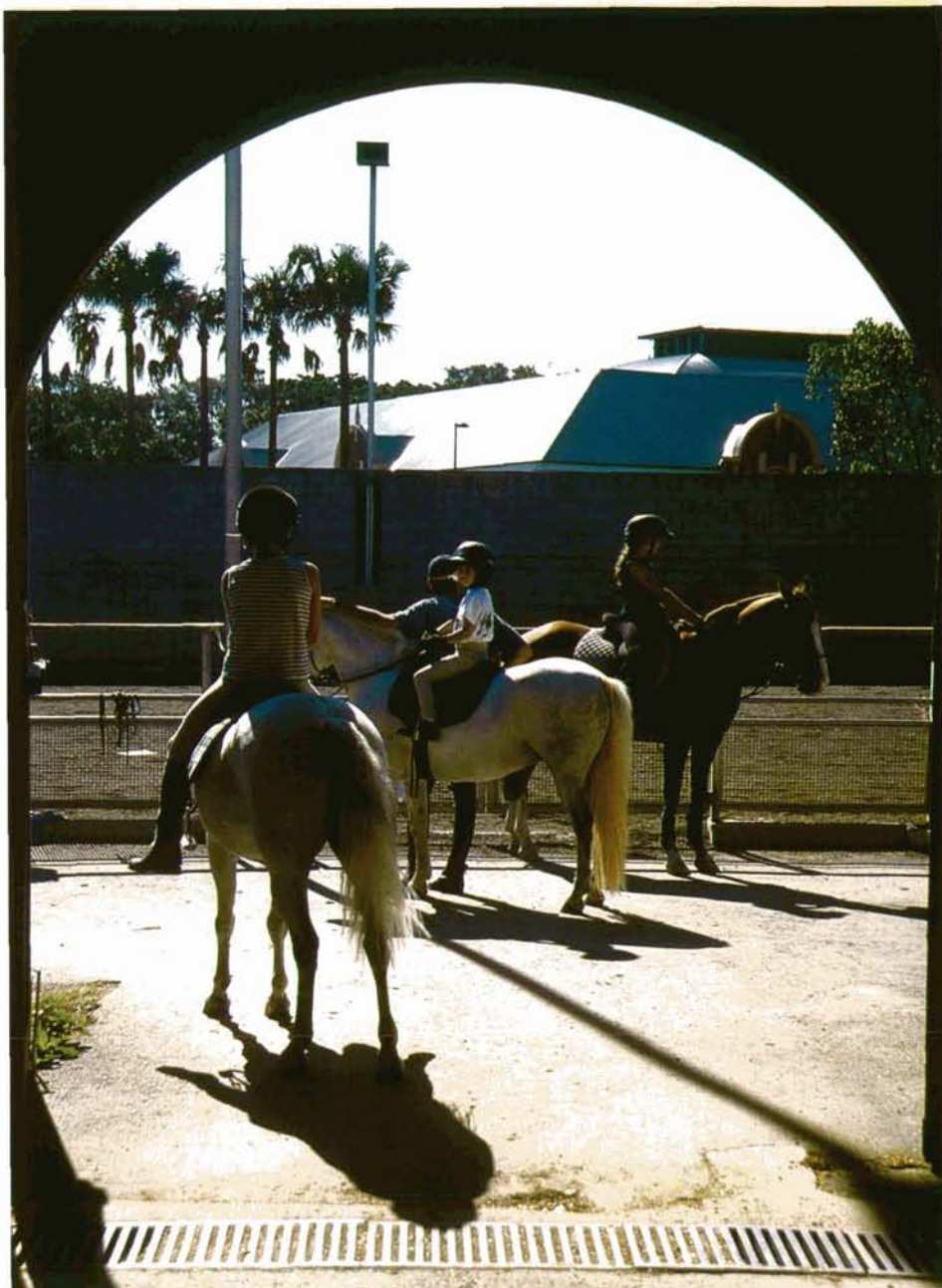
Rose Gough opened the Riding School at the Centennial Park Equestrian Centre in 1996, and has fifteen horses providing equine entertainment and recreation for all age groups.

From 'My Little Pony' group rides for toddlers, adult learners, experienced riders to overseas visitors, the School offers a unique experience of Sydney's favourite Parklands.

Children can get their first taste of horse riding from the age of two with the Ranger-led 'My Little Pony' rides. Riding lessons can start from the age of three – or at any age!

"We even have one family group who come at weekends with the grandfather learning alongside his grandchildren," says Rose.

People progress at different levels and are introduced to different horses as their level of control grows. A particular favourite is an eleven-year-old called Darkie, who has taught hundreds



of children to ride.

"He's getting a bit too old now, but is so used to being around people that he really doesn't like being left alone, and misses children's company. His stable is decorated with paintings and drawings the children have made for him."

During school holidays, riding camps provide a more intensive opportunity to learn and practice new skills. They are extremely popular, and early bookings are encouraged.

"Life is always interesting at the

stables. We have begun to organise more corporate riding days for companies conducting team-building exercises, and are well known to location scouts for photography and filming.

Country singer Lee Kernaghan was a recent visitor for some publicity photos which appeared in "Women's Weekly".

"We've also had a number of famous visitors, including Monty Roberts, on whom the bestselling novel and movie 'The Horse Whisperer' was based," says Rose.

Horsing around

Parklands talks to a long-term resident of the Centennial Parklands Equestrian Centre

Alan Gillham has been Sydney's 'Penfolds' Man' since 1983, in charge of the last remaining working horse and cart in the city.

Like thousands of fellow Sydneysiders, Alan had often seen the Penfolds cart winding its way through city streets on its daily deliveries and thought to himself it would be really nice to be in charge of it.

So he rang Penfolds and asked for the job. "Unfortunately someone else already had it, and wasn't about to give it up! But eventually, in 1983, the incumbent retired and I was hired," he explains.

A watchmaker by trade for over a decade, Alan's lifelong love of, and contact with, horses gave him a wealth of equine knowledge and experience, essential attributes for his personal 'dream job'.



Alan currently has three horses working with him, a 9 year old called Striker, and mother and daughter mares Annabelle and Caroline. He rotates the horses, with four to six months on and off duty, and when they are not working the Sydney streets they retire to Cowra for some rest and recreation.

"The horse and cart is out on the streets Monday to Friday every week, picking up orders from Penfolds' seven inner city stores, and delivering to a wide customer base. We go out in all weathers, except torrential rain, when we prefer to leave deliveries to the cycle and car couriers," Alan says.

"We probably average 25 kilometres a day, delivering up to 30 parcels. We finish work about 2.30pm and head back to our stable at the Centennial Parklands Equestrian Centre for a feed and rub down and overnight accommodation."

The Penfolds horse and cart has been stabled at the Equestrian Centre since 1983, and are the only working horses on the premises.

Alan explains that most of the horses he has had over the years have responded pretty well to working in urban conditions, although all have their own foibles. Most horses don't like things which are bigger than them, or higher, and most detest the monorail.

"Striker for instance, copes beautifully with all traffic and vehicles, but is petrified of cement mixers. Don't ask me why – he just doesn't want to go anywhere near them," says Alan.

"Horses are creatures of habit, and maintaining regular routes like we do means they get used to traffic patterns and regulations. They know if we're in the middle lane that we keep going, left lane means a left turn, right vice versa, and they always stop right on the white line! They wear blinkers when they are out, because it narrows their field of vision, and they don't startle at anything that might move on the periphery."

As well as the practical Penfolds cart, Alan has a beautifully restored horse-drawn carriage which once belonged to a French nobleman, and which can be hired for weddings..... or any other romantic jaunt.

Party pavilion

Anyone planning a party, wedding, commercial launch or other special event will be familiar with the trawl through venues, trying to find something new and fresh and accommodating. Or something that surprises...

C Pavilion at the Equestrian Centre is one of Sydney's newest spaces for hire, and was host to some special events throughout 1999, not least the *Friends of Centennial Parklands* Christmas function.

Gillian Stokie, the Trust's Marketing Account Manager, looks after bookings for both the Pavilion and the Parklands' other popular venue, Centennial Square, and has been amazed by the variety and creativity of events held there.

"When you look into C Pavilion you see a beautiful building made from sympathetic materials – 200 year old timbers, cobblestones and brass fittings. It evokes another era, and has a unique atmosphere," says Gillian.

"It works beautifully for weddings, and other events, holding up to 250 people. With imagination and creativity it can be turned into so many different things. One recent group transformed it into a bazaar straight from the *Arabian Nights*!"

Despite the rustic historic appearance, C Pavilion still offers all the modern facilities to organise corporate or private gatherings – power, car parking, bar and kitchen. For bookings call (02) 9339 6613.





"take as much interest in it as if by your own hands you had planted the flowers...and if you thus rise to the full appreciation of this great beauty and your great privileges, the park will be one of the grandest adornments of this beautiful country." Sir Henry Parkes, 1888

Friends of the Parklands

Friends – Application Form

Become a Friend of Centennial Parklands and enjoy these benefits:

- membership key ring
- Parklands Magazine posted 4 times a year
- 10% discount at Centennial Parklands Restaurant
- Ranger guided walks and other Friends' activities
- quality membership certificate
- discounts on selected Parklands events

Plus you will be helping to support the future of Sydney's grandest 19th century public park, dedicated to the people by Sir Henry Parkes in 1888.

Membership category

- ☐ Single (1 year).....\$50
☐ Family (1 year).....\$90

Name: Mrs/Ms/Miss/Mr/Dr _____

Address: _____

Postcode: _____

Telephone: home _____

business _____

Payment of \$_____ is enclosed (cheques payable to Centennial Park & Moore Park Trust) OR Please charge \$_____ to my ☐ Bankcard ☐ Mastercard ☐ Visa

Card no _____

Expiry date ____/____/____

Card Holder's name _____

Card Holder's signature _____

Send to: Centennial Parklands Friends
 Locked Bay 15
 PADDINGTON NSW 2021
 Phone: (02) 9339 6699
 Fax: (02) 9332 2148



TWILIGHT HERITAGE RAMBLE – FRIENDS ONLY EVENT

Saturday 13 April

This season, Friends of Centennial Parklands are invited to see the Parks' heritage in a totally different light – lantern light!

The evening will begin with a special slide show from our archives collection.

Rangers will guide you on a lantern light walk to visit some of the historic features of the Parklands, including the heritage-listed reservoirs and the Federation Pavilion. Saturday 13 April 5.30–8pm. \$8 Friends, \$10 for their guests. Numbers strictly limited.

Bookings essential on (02) 9339 6699

SPECIAL TREE VIEWING DAY

Sunday 2 and Monday 3 April 2000

All Friends of Centennial Parklands who have dedicated a tree in the Parklands are invited to meet with our Senior Arborist Ted Hoare for a private viewing of their Dedicated Tree on Sunday 2 April or Monday 3 April.

Many Friends have met Ted at Trust functions or joined him for one of his famous tree walks. Now you have the opportunity to view your tree up close and find out all about your tree, its special features, how it is performing and what growth you can expect in the future. This offer is open to all Dedicated and Foundation Friends, including those who have not yet had a viewing, as well as those who would like to see how their tree is progressing.

Please phone Georgia Stynes on (02) 9339 6652 before Monday 27 March to arrange a viewing time.



Equestrian Centre tours were one of the highlights of the Friends festive celebration.

FRIENDS GET FESTIVE – THURSDAY 9 DECEMBER 1999

Over 160 Friends gathered at the Centennial Parklands Equestrian Centre on 9 December for the Friends of Centennial Parklands annual festive season celebration.

The evening was hosted by Friends Patron, Lady Susie Martin and Centennial Parklands Director, Peter Duncan, in our newest entertainment venue – C Pavilion.

As well as providing an ideal location for the festivities following a torrential downpour earlier in the day, it also gave many Friends a first glimpse of the refurbished Equestrian Centre.

Stables Manager Peter Taylor led guided tours through the fully restored heritage stables and state-of-the-art arenas. For young Friends, the highlight of the evening was undoubtedly the pony rides.

A big thank you to Rosemary Gough and staff of Moore Park Stables for providing pony rides, and to Stables Manager Peter Taylor for his informative tours of the Equestrian Centre.

FRIENDS AND GST

Like other goods and services, Friends memberships are subject to the GST from 1 July 2000.

New Friends memberships and renewals issued after 1 July 2000 will include 10% GST.

This means a Friends single membership (1 year) will be \$50 plus \$5 GST (\$55 total) while a family membership (1 year) will be \$90 plus \$9 GST (\$99 total).

King Island comes to Centennial Park



Celebrate King Island Day and enjoy sumptuous produce from this famous region.

Join the Friends of Centennial Parklands and celebrate the style and flavour of King Island on Thursday 23 March at the Centennial Parklands Restaurant.

Situated in Bass Strait between Victoria and Tasmania, King Island was settled in 1800 and named after Philip King, Governor of NSW.

King Island has developed from a sealing and whaling colony into Australia's most renowned fine produce region. Famous for its high quality cheese, cream, and beef, King Island also harvests kelp which is exported for use in everything from ice cream to cosmetics.

The evening will begin at 6.30pm with a talk by Tim Smith from the NSW Heritage office, on the various shipwrecks around the island's shores. King Island's jagged shoreline has scuppered many ships, and is the site of one of Australia's worst maritime disasters, the Cataraqui.

Chef David Noonan has created a mouth-watering menu from high quality produce sourced from King Island suppliers for the evening.

Entrees include Nine Oysters with Creme Fraiche and Salmon Roe, Smoked Salmon with Avocado and Celeriac Remoulade and a Salad of Endeavour Blue with Rocket, Parmesan and Walnuts.

Main courses follow with

Roasted Pork Loin filled with Braised Lentils, Tapenade and Anchovy, Scotch Fillet with Beetroot and Italian Parsley Reli with Horseradish Cream, Char Grilled Ocean Trout with Ratatouille and Aioli and Spinac Linguini with King Island Blue a Pinenuts.

Desserts offer a choice of Ba Quince with Honey and Double Cream, Fresh Figs with Brandied Orange, Mascarpone and Pistachio Sable and a Selection of King Island Cheeses with Muscatels and Wa Bread.

Tables can be booked from 6.30pm to 9.30pm, with the talk starting 6.30pm sharp.

Menu enquiries and booking (essential) can be made directly to the Centennial Parklands Restaurant on (02) 9360 3355. Parking is available at the Restaurant, entry Paddington Gates. Please present your Friends of Centennial Parklands keyring on the evening to receive your special discount.

Dinner (including talk)
 2 courses: Friends \$35, Guests \$40
 3 courses: Friends \$40, Guests \$50

Those who become Friends of Centennial Parklands on the night will also be eligible for the discounted dinner price.

autumn events

Escape and Explore School Holiday Program

MARCH

3 Friday

SPOTLIGHT PROWL – all ages

Discover the secrets of Centennial Park after dark. Join the Rangers spotlighting possums, flying foxes and other creatures of the night. Bring your own torch. 7.45–8.45pm. \$8 per person. Bookings essential (02) 9339 6699

5 Sunday

AUTUMN CAR FREE DAY

Enjoy the first Sunday of Autumn in Centennial Park. Walk, cycle or catch public transport and enjoy the Parklands free from cars and traffic! Disabled access via Musgrave Ave Gates, Cnr Darley and York Rds, 9am–5pm.

CLEAN UP AUSTRALIA DAY

Help us to beautify the Parklands as part of Clean Up Australia Day. Bring hat,

sunscreen and gloves and wear covered footwear. 10am–2pm. Meet and register at the Learners Cycleway.

8 Wednesday

MY LITTLE PONIES – Toddlers

Take a tour through the Centennial Parklands Equestrian Centre. Find out where the horses live, what they eat and how we care for them. Jump into the saddle for a pony ride too. Bring hat and boots. 10–11am. \$7 per child, adults free. Bookings essential (02) 9339 6699



SENIORS WEEK MARCH 2000 – 'The New Age'

To celebrate Seniors Week 2000, the following guided walks have been organised especially for Senior Citizens. All are welcome, but special discounted prices apply for Seniors.

22 Wednesday

HERITAGE WALK

Take a Ranger-guided heritage walk through the Parklands, tracing the history and development of the 'People's Park' from swampland to Federation and beyond. 2–3.30pm. Seniors \$3, Adults \$8. Bookings essential (02) 9339 6699

24 Friday

EQUESTRIAN CENTRE TOUR

Previously the RAS Showground Stables, the Centennial Parklands Equestrian Centre is a fully restored heritage stable with state-of-the-art arenas. Take a tour with Stables Manager Peter Taylor followed by a light morning tea in the old Clydesdale Pavilion. 10–11am. Seniors \$3, Adults \$8. Bookings essential (02) 9339 6699

25 Saturday

BREAKFAST WITH THE BIRDS

Join a Ranger-guided walk to discover the diversity of native and exotic birds living in Centennial Parklands. BYO hat, binoculars and sunscreen. Includes a light breakfast. 8.30–10.30am. Seniors \$5, Adults \$8. Bookings essential (02) 9339 6699

9 Thursday

ANIMALS IN DISGUISE – Toddlers

Uncover the hidden lives of the animals living in Centennial Park. Play the camouflage game and decorate a mask and disguise yourself from the Rangers! 10–11am. \$7 per child, adults free. Bookings essential (02) 9339 6699

23 Thursday

STYLE AND FLAVOUR OF KING ISLAND DINNER

Celebrate King Island Day with the Friends of Centennial Parklands. All dishes are based on King Island produce and the evening includes a King Island themed talk. Bookings (02) 9360 3355

25 Saturday

'FRIENDS OF BATS' TALK

Centennial Parklands is host to the annual Ku-ring-gai Bat Conservation Society 'Friends of Bats' night. Visit the 'Secret World of Bats' and meet live flying foxes. Bring torch. 6–8.30pm. Free. Bookings essential (02) 9416 7334

APRIL

5 Wednesday

MY LITTLE PONIES – Toddlers

See 8 March. 10–11am.

7 Friday

SPOTLIGHT PROWL

See 3 March. 6.30–7.30pm.

9 Sunday

NATURE PHOTOGRAPHY WORKSHOP

Learn basic photography techniques with professional photographer Evelyn Rose. Capture the natural beauty of Centennial Park on film. Bring hat, camera and film. 10am–1pm. \$25 per person. Bookings essential (02) 9339 6699



13 Thursday

ANIMALS IN DISGUISE – Toddlers

See 9 March. 10–11am. Bookings essential (02) 9339 6699

16 Sunday

CENTENNIAL PARK GROUP PHOTO

Be part of history as photographers assemble a gathering of lovers of Centennial Park to break the record for Sydney's biggest group photo. Full details (02) 9315 8060

30 Sunday

THE HOST CITY MARATHON

Over 5000 participants will compete in this Olympic Marathon test event, a selection race for the Australian Sydney 2000 Olympics team. Beginning in North Sydney at 6.30am, participants will begin entering the Parklands after 8am. Centennial Park will be closed to horses bicycles, and cars till 12pm. Pedestrian access only.

MAY

5 Friday

SPOTLIGHT PROWL

See 3 March. 5.45–6.45pm. Bookings essential (02) 9339 6699

7 Sunday

FAMILY POND PURSUIT

Discover the secrets of Centennial Park's ponds! Meet the Rangers to collect your map and set off in hot pursuit to find the answers! Bring hat, sunscreen and drink. 10am–Noon. \$10 per family. No bookings needed. Meet Musgrave Ave Gates, cnr Darley and York Rds.

10 Wednesday

MY LITTLE PONIES – Toddlers

See 8 March. 10–11am.

11 Thursday

ANIMALS IN DISGUISE – Toddlers

See 9 March. 10–11am.

13 Saturday

TWILIGHT HERITAGE RAMBLE – Friends of Centennial Parklands event

Begin with a slide show of images from the Park archives collection. Then follow Rangers on a twilight lantern light walk to view the Park's historic features. 5.30–8pm. \$8 per Friend, \$10 for their guests. Bookings essential (02) 9339 6699

21 Sunday

MILLION PAWS WALK – All ages

Join all creatures great and small and their owners at the RSPCA's annual Million Paws Walk, Loch Avenue South (behind Centennial Square). For information and a registration pack please telephone 1800 065 046

■ Bookings for Centennial Parklands events are only confirmed on receipt of payment
■ In case of rain, please call to confirm event is proceeding. A full refund will be given if an activity is cancelled due to wet weather.

■ Bookings are essential for all School Holidays activities and can be made by calling (02) 9339 6699

■ Please note that numbers are limited. Activities are only confirmed on receipt of payment. Places will not be held without payment in full.
■ Cancellations less than 48 hours prior to the activity may not receive a full refund.
■ Toddlers activities for 2-5 years and Children's activities for 6-12 years (unless otherwise stated).
■ In case of rain, please call to confirm event is proceeding. A full refund will be given if an activity is cancelled due to wet weather.

APRIL



17 Monday

EGG-STRAVAGANZA – Toddlers

What do birds, snakes, frogs and ants have in common? Eggs! Learn about eggs, play the egg match game and search for eggs hidden in the Parklands. 10–11am. \$7 per child, adults free.

SENSORY ADVENTURE – Children

Use all your senses to discover the amazing living things in Centennial Park. Make a sound map, follow the blindfold trail and taste some bush foods. 2–3.30pm. \$8 per child.



SPOTLIGHT PROWL – All Ages

Discover the secrets of Centennial Parklands after dark. Join the Rangers spotlighting for possums, flying foxes and other creatures of the night. Bring your own torch. 6.30–7.30pm. \$8 per person.

18 Tuesday

UNBELIEVABLE LEAVES – Toddlers

Collect as many different leaves as you can find! Use your leaves to make some unbelievable leaf rubbings, leaf stamps and magnets. 10–11am. \$7 per child, adults free.

EGGS-A-PLENTY – Children

Big eggs, small eggs, spotty eggs, green eggs – they look different but how are they the same? Learn why eggs are important and where they are found. Build a nest and hunt for eggs to put in it. 2–3.30pm. \$8 per child.

19 Wednesday

EGGS-A-PLENTY – Children

See 18 April. 10–11.30am.

SENSORY ADVENTURE – Children

See 17 April. 2–3.30pm.

20 Thursday

EGG STRAVAGANZA – Toddlers

See 17 April. 10–11am.

SENSORY ADVENTURE – Children

See 17 April. 2–3.30pm.

SPOTLIGHT PROWL – All Ages

See 17 April. 6.30–7.30pm.

23 Sunday

MOBILE RANGER STATION

Visit the Mobile Ranger Station for displays and information about Centennial Parklands. 11am–2pm. No bookings needed. Meet at Centennial Parklands Café.

24 Monday

MOBILE RANGER STATION

See above.



26 Wednesday

UNBELIEVABLE LEAVES – Toddlers

See 18 April. 10–11am.

EGG-STRAVAGANZA – Toddlers

See 17 April. 2–3pm.

SPOTLIGHT PROWL – All ages

See 17 April. 6.30–7.30pm.

27 Thursday

EGGS-A-PLENTY – Children

See 18 April. 10–11.30am.

UNBELIEVABLE LEAVES – Toddlers

See 18 April. 2–3pm.

Centennial Parklands – User's Guide

PARKLAND OPERATIONS

First Aid and Emergency

24 hour Ranger service, 7 Days.
9746 2164 or 9746 0444

Administration

8.30am-5pm Monday-Friday. Located behind Centennial Parklands Café.
Phone 9339 6699, fax 9332 2148

Friends of Centennial Parklands

More than a group of park lovers, the Friends are an important association of like-minded people committed to preserving the Parklands' history and culture.
9339 6699

Community Consultative Committee

Meets approximately every six weeks. Committee members can be contacted via Centennial Parklands' Administration.
9339 6699

DINING & REFRESHMENTS

Centennial Parklands Restaurant

Modern Australian à la carte restaurant offering a full wine list. Open daily for breakfast and lunch. Also available for weddings and function hire.
Open 7 days, 8.30am-3pm. 9360 3355

Centennial Parklands Café

Specialising in light meals and snacks, the Café offers open air eating in our award-winning forecourt. Open 7 Days, 8am-5pm.

Centennial Parklands Kiosk

Located next to the Duck Pond, the Kiosk serves sandwiches, light meals, coffee, cold drinks and ice cream.
Open Weekends and Public Holidays, 8am-sunset.

SPORT AND RELAXATION

Cycling & Roller Blading

A 4km cycling and roller blading track follows the perimeter of Grand Drive. A Learner's Cycleway for children is also available (cycling only). Cyclists are not permitted to ride in packs of more than 15. Hire available from:

- Centennial Park Cycles: 9398 5027 (bikes & blades)
- Woolys Wheels: 9331 2671 (bikes)
- Bondi Boards & Blades: 9369 2212 (blades)
- Total Skate: 9380 6356 (blades)

Horse Riding

Centennial Park is one of the few remaining parks in the world offering inner-city horse riding, with a 3.6 km circular horse track and some 2 hectares of fenced equestrian grounds. Horse hire available from:

- Moore Park Stables: 9360 8747
- Centennial Stables: 9360 5650
- Eastside Riding Academy: 9360 7521

Picnics & BBQs

The Parklands offer unlimited picnic spots, with views of ponds, fields and gardens. Also five BBQ locations in Centennial Park and one in Queens Park. Access to picnic areas and BBQs operates on a first-in basis. Bookings required for groups of 50 or over. Bookings: 9339 6699

Jogging & Walks

A 3.6 km jogging track is available around Grand Drive. Self-guided walking trails are located at Lachlan Swamp and the Duck Pond. Guided walks held regularly each season. Guided walks bookings: 9339 6699

Dog Walking

Dogs can be exercised off leash, but under control in Centennial Park outside Grand Drive, and in Moore and Queens Park. Dogs must be on a lead inside the Grand Drive circle. For safety reasons dogs are not allowed on the horse or cycle track, roads, equestrian grounds, children's

playgrounds, Learner's Cycleway, in ponds or on sporting fields when in use. Dogs must be kept 10 metres from BBQs.

Children's Activities

Ranger-led Birthday Parties, toddler activities, Holiday activities and School Excursions are available as part of the Parkland's *Escape and Explore Program*.
9339 6641 or 9339 6645

FACILITIES

Centennial Parklands Equestrian Centre

Formerly the historic Sydney Showgrounds stables, now a world-class Equestrian Centre offering 270 stables, a lunging yard, arenas, veterinarian, agistment providers and riding schools.
9332 2809

Moore Park Golf Club

Public 18 hole golf course in the heart of the Eastern Suburbs. Includes Golf Pro Shop and one of the largest driving ranges in Australia. 9663 3791

ES Marks Athletics Field

International standard 400 metre recatan running track, shot put, discus, javelin, long, high & triple jump facilities available. Quality change rooms, first aid rooms and a meeting room also available. 9339 6620

Centennial Parklands Sports Centre

Tennis, basketball and netball courts available for casual or regular use.
9662 7033

Playing Fields

Playing fields in Centennial, Moore and Queens Parks are available for team sports, including cricket, soccer, hockey, rugby and touch-football.
Bookings: 9339 6620

Centennial Parklands Children's Centre

Long day care centre for babies to pre-schoolers. 9663 1200

FUNCTIONS & EVENTS

Centennial Square

Surrounded by trees and designed for marquees, this site caters for 50 to 1200 people. Located next to one of Centennial Park's historic ponds on the eastern side of the Park. Perfect for weddings, launches and events.
Bookings: 9339 6613

C Pavilion

Originally built as home for the Carlton Clydesdale Team, C Pavilion captures the spirit of a historic stables with function and exhibition space facilities. Holds up to 500 people.
Bookings: 9339 6613

Events

Submissions from the public are welcome for activities and events that support the Parklands' cultural policy.
Enquiries: 9339 6615 or 9339 6635.

Filming & Photography

Centennial Parklands offers a versatile range of locations for commercial filming and photography at competitive rates.
Bookings: 9339 6621

TRANSPORT

Public Transport – easily accessible by bus. Route 339 from City stations and 355 from Bondi Junction run regular services to Moore Park.
Phone 131 500 for timetable details.

Car – main gates to Centennial Park open 6am-6pm during Autumn.

Car Free Days are held on the first Sunday in March, June, September and December. A 30km speed limit applies on all roads in Centennial Park.



Back cover: Moore Park was bustling with activity over Summer, with events such as Circus Oz and the One Day Cricket Matches drawing crowds of up to 50,000 people. See page 2 for details.

Front cover: Sunset at the Duck Pond, Centennial Park. Restoration of the Duck Pond has been recently completed, and has significantly improved the pond environment by stabilising its banks and replanting aquatic and terrestrial plants.

CENTENNIAL  parklands

Locked Bag 15
PADDINGTON NSW 2021
tel (02) 9339 6699
fax (02) 9332 2148
www.cp.nsw.gov.au