

Free

parklands

www.centennialparklands.com.au

Korean War Memorial

Cycling in the
Parklands

Beautiful butterflies

Spring 2009



*Healthy Parks
Healthy People*


CENTENNIAL
parklands
is living Sydney



Welcome to Centennial Parklands in spring – one of the best times, and places, to be outdoors in Sydney.

On 26 July 2009, the Trust was privileged to be part of the dedication and opening

to the public of the Korean War Memorial in Moore Park. It was a moving occasion, which brought the Australian and Korean communities together to mark the Korean War 1950-53, and those who died.

We were also pleased with the sensitive design of the memorial that sits well within the landscape in its high profile location. Our thanks to the NSW government, the veterans and the Australian and Korean communities for their support.

On other Parklands matters, Centennial Parklands Dining will be celebrating its one year anniversary this October and is rapidly becoming a favoured location for the community.

On a sadder note, I would like to take a moment to mark the passing of Mr Ern Hoskins - renowned ornithologist and one of Centennial Parklands' great friends.

Ern passed away in July this year at the age of 94. Over the years Ern had volunteered his time to the Parklands by conducting bird-watching tours, as well as observing and recording bird species in the Parklands.

He was affectionately called the "human lyrebird" for his ability to virtually "whistle" the birds out of the trees! Ern was also a talented bird illustrator and in 1973 he painted a sign depicting Common Water Birds in the Parklands. This sign was revitalised in 2002 and now stands proudly near Willow Pond. Our condolences go to his family with our heartfelt respect for Ern's significant lifetime of achievements.

Steve Corbett
Director and Chief Executive
Centennial Park and Moore Park Trust

Parklands magazine is published quarterly by the Centennial Park and Moore Park Trust: Locked Bag 15, Paddington NSW 2021

Centennial Parklands is managed by the Centennial Park and Moore Park Trust.

Trustees:

Prof. John Niland AC (Chairman)
Justice Annabelle Bennett AO
Yvette Pietsch
Dr Margaret Varady AO

David Leckie
Mairaed Bilmon
Anne Keating
John Walker (Deputy Chairman)

The Trust acknowledges the Cadigal as the traditional custodians of the land that is now known as Centennial Parklands.

Editor: Rachel Maiden
rachel.maiden@cp.nsw.gov.au

Contributors: Trevor Waller

Photography: Benjamin Townsend (cover), Chris Gleisner (Foundation cover), Phil Quirk.

Cover: Ji-eon Lee and the NujjaGoori Aboriginal Dancers perform the Welcome Ceremony at the opening of the Korean War Memorial

Visitor Information

Car Free Days

Last Sunday of every season (February, May, August and November).
Next day: Sunday 29 November

Centennial Park Gate Times

Centennial Park is accessible to vehicles between sunrise and sunset. Musgrave Ave Gates are closed permanently to cars.

Contact Us

i Visitor Information Counter

Located adjacent to the Kiosk, off Banksia Way. Opening hours Monday to Friday: 9.00 am–4.00 pm Saturday, Sunday and Public Holidays: 10.00 am–3.00 pm

i Parklands Office

Located at the end of Banksia Way behind the playground. Opening hours Monday to Friday: 8.30 am–5.00 pm

Information boards containing maps and brochures are conveniently placed at most entry gates and main thoroughfares throughout the Parklands.

T: (02) 9339 6699 | F: (02) 9332 2148

After hours emergency: 0412 718 611

E: info@centennialparklands.com.au

www.centennialparklands.com.au

Locked Bag 15, Paddington NSW 2021



Healthy Parks Healthy People

Celebrating World Parks Day

Steve Coleman, Executive Director of Washington Parks and People, upon visiting Centennial Parklands last year said that: 'Cities without parks have no limbs to play, no lungs to breathe, no mind to wonder, no heart to live, and no spirit to soar.'

While noble sentiments for sure, if we think about these words at a local Sydney level they capture perfectly the role of Centennial Parklands.

Urban parks and green spaces have been where people from all societies and cultures have congregated to celebrate, mourn, reflect, connect and enjoy the achievements of their communities.

Urban parks educate, protect, are venues for recreation, are means by which we connect with nature and connect with our neighbours and communities in modern and urbanised society. They replenish our air and water and they protect or provide safe havens in cities from natural events. They define what a civil society is and they define what a liveable city is.

This is what we will be celebrating on Saturday 20 September 2009 on World Parks Day. Find out more online at **www.centennialparklands.com.au/worldparksday**

And remember, healthy parks equal healthy people.



Turpentine Grove upgrade



The final and fourth stage of the Restaurant precinct works has been completed with the renovation of Turpentine Grove. This area, opposite Centennial Parklands Dining, now features specially-designed accessible picnic tables and pathways. Combining creative landscaping with the shade from the magnificent Turpentine trees (*Syncarpia glomulifera*) these works will protect the trees while making this a popular picnic spot for the whole family.

Windgap Foundation

The Trust's horticultural team have been working with a group of eight young people from the Windgap Foundation, one of Sydney's most respected and longest serving providers of support services to people with intellectual disabilities and their families.

For two hours a week the participants have received on-the-job training to assist them in gaining their Certificate I in Horticulture as well as providing them with practical skills in cultivation, growing and harvesting of trees and plants. With the help of these young people, the Kensington Pond area is now bursting with healthy new life which will create a haven for native fauna.



Steve Corbett (left) with Mark Brayshaw, Chief Executive Officer, PGA Links

New operators to take over Moore Park Golf operations

PGA Links Management Pty Ltd has been selected as the new facilities operator of Moore Park Golf, following a comprehensive public tender process. From 1 October 2009 they will be managing the facilities at the Golf House, the Pro Shop, Driving Range and green fees for the golf course.

Steve Corbett, Director and Chief Executive of the Trust said: 'PGA Links Management is a unique partnership between the Professional Golf Association of Australia and a family-owned company that also manages facilities at Sandhurst Club and Sanctuary Lakes Resort among others. We welcome them and would also like to thank outgoing operator, Belgravia Leisure, for five years of committed service.'

Regulation review

A new *Centennial Park and Moore Park Trust Regulation 2009* commenced on 1 September 2009 with minor changes only. The new Regulation was preceded by a 28 day public consultation period during which community and stakeholders presented and reviewed submissions about proposed changes to the Regulation. Nine submissions were received and these were considered as part of the development process.

The *Centennial Park and Moore Park Trust Act 1983* provides for the Regulation which is required to be reviewed every five years. For more information on the new Regulation, please visit **www.centennialparklands.com.au**.



No more woofy...



Centennial Park has welcomed a new service provider that is fast becoming a big hit with dog lovers in the community. Pet Wash 2000 – a dog wash and grooming service – has set up in Centennial Park and is available seven days-a-week.

Pet Wash 2000 is conveniently located adjacent to Federation Valley in Centennial Park – right next to Centennial Park Cycle Hire. The service is open from 9.00 am to 5.00 pm daily (weather permitting) and pre-booking is not required. To find out whether the service is open on any given day, please contact Pet Wash 2000 on 0404 052 244.

Korean War Memorial

Memorial honours veterans of the Korean War

The newly constructed Korean War Memorial was launched on Sunday 26 July by the Hon. Graham West MP, Minister Assisting the Premier on Veterans' Affairs, Mr Yang Kim, Minister for Patriots and Veterans Affairs, Republic of Korea, Mr Woong-nam Kim, Consul General, Republic of Korea, Veterans groups and the Korean community of Sydney.

The moving ceremony honoured the veterans of the Korean War and the friendship forged between two countries.

Located at the northern end of Moore Park near Anzac Parade, the newly constructed memorial is a place that remembers the war with dignity and in so doing honours the hope of future peace. It is a place of significance; a place that brings people together for ceremonies and cross-cultural celebrations, while remaining accessible to all Park users.



Mr Yang Kim (right) with Mr Michael Harkins, Department of Premier and Cabinet

The memorial features a circular stone wall enclosing the site symbolising "strength", a central pathway based on the *taeguk* or yin and yang symbol found on the South Korean flag symbolising "commemoration", a field of metal sculptures based on the Korean national flower (the Rose of Sharon) symbolising "regeneration" and polished concrete blades representing the rugged mountains of Korea symbolising "remembrance".

There were 339 Australians and 230,000 South Koreans that died in the conflict between 1950 and 1953.

The memorial was funded jointly by the NSW Government, Korean Government, Veterans groups and the Korean community of Sydney.

Triennial research reveals positive results

What our visitors think of Centennial Parklands



The Trust has recently completed its latest Triennial Visitor Survey, with some great results coming through about your views on the state of the Parklands.

The Trust has undertaken five visitor surveys since 1985 which have allowed it to capture an extensive range of data and trends on issues relating to the operations, management, services and businesses across the Parklands.

Of interest from the results, there has been:

- A decrease in the proportion of visitors using a car to get to the Parklands, from 70% in 2005 to 52% in 2008/09 with a

corresponding increase in visitors walking from 21% in 2005 to 39% in 2008/09.

- Fewer visitors staying at the Parklands for over 2 hours, decreasing from 26% in 2005 to 16% in 2008/09, however this is likely due to cold, rainy weather conditions.
- Improvement in the ratings for the quality of Park facilities for:
 - Toilets (from 3.4 to 3.9 out of 5)
 - Drinking bubblers (from 3.4 to 3.7 out of 5)
 - BBQ facilities (from 3.6 to 3.9 out of 5)
 - Picnic tables (from 3.7 to 3.9 out of 5)
 - Golf course (from 3.9 to 4.3 out of 5)
- High ratings for the quality of management services.

Nearly half (48%) of visitors said recent improvements have made a positive difference to their Park experience. The improvements mentioned most often included:

- Café, restaurant and shop
- Toilets
- Playgrounds
- Trees, plants and landscaping
- Walkways and paths.

Research, such as this triennial survey, feed into the Trust's planning and management of the Parklands and are a valuable tool in ensuring that Centennial Parklands is providing a relevant and well-serviced public asset for the community to use and enjoy.

More detail on the survey, including areas for improvement, is available online at www.centennialparklands.com.au

Trust fulfils Park Improvement Plan commitments

The NSW Government's seven-year \$49 million funding commitment to park improvement has been completed.

The Trust has completed the last projects under its comprehensive seven-year Park Improvement Plan 2002-2009 (PIP) with 5.8 million spent in the 2008-09 year. The last projects to be finalised include the Turpentine Grove renovation, Queens Park Playground (stage three) and amenities refurbishments in Centennial Park and Queens Park.

The PIP was developed in 2001 in consultation with a wide range of stakeholders and community groups, as well as feedback received through the Trust's triennial Visitor Survey.

Its aim was to achieve long term environmental, social and economic sustainability of Centennial Parklands, as the Parklands' ageing infrastructure and facilities at the time were not able to cope with many of the increasing usage demands experienced by the immense growth in the surrounding residential population.

While there were over 100 projects delivered as part of the PIP, some of the key projects included:

- Grand Drive footpath and drainage upgrade
- Centennial Parklands Restaurant redevelopment and Restaurant Precinct improvements



The new shared pathway in Queens Park

- Shared pathway in Queens Park
- Pond restoration and bush regeneration works
- Four new playgrounds
- Improvement of tees, greens and bunkers at Moore Park Golf
- Restoration of statues and weather station
- Five new amenities and others refurbished

In the 2009-10 NSW Budget, the NSW Government announced a further \$17.4 million co-funding commitment over the next four years to projects across Centennial Parklands as part of the Government's ongoing commitment to the provision of the Parklands for the whole community.

You can read more about the PIP and the forthcoming improvement projects online at www.centennialparklands.com.au.



Celebrating our Parklands this spring!

World Parks Day and Crave Sydney

World Parks Day, on Saturday 20 September 2009, is a global celebration of parks and the vital role they play in our community.

Centennial Parklands will be hosting a number of World Parks Day activities such 'Park After Dark' and Ranger-led fun for the kids – encouraging a healthy and active outdoor life.

Further information on the World Parks Day global initiative is available at www.worldparksday.org.

Also this spring will see the introduction of a new event on the Sydney calendar: **Crave Sydney**. This festival will showcase the best of Sydney's food, wine, culture, art and natural beauty. Highlights include the Sydney International Food Festival, Breakfast on the Bridge, Sydney Harbour Island Hopping and Picnic in the Park to name a few.

Centennial Parklands will be part of the Crave Sydney calendar of events with a community event to be held on Sunday 25 October 2009. There will be plenty of fun and games to be had for the whole family, so grab a rug and your picnic basket and join in the excitement of Crave!

Further information about both these events is available at www.centennialparklands.com.au.

Cycling in the Parklands

People come from far and wide to cycle in Centennial Park and it's not surprising. With its dedicated cycle lane and relatively flat circuit it is perfect for young or older recreational cyclists, whether they are serious or novelty riders. What might surprise you is that it is estimated that over 700,000 cyclists a year visit Centennial Park.



Cycling has a rich history in Centennial Park. The Parklands Conservation Management Plan states that in 1900 the Cyclists Carriage was opened in Centennial Park – 5 years before cars were allowed into the Park! And in 1908 the former Kiosk was refurbished into a Cyclists' Pavilion.

The book "Centennial Park A History"¹ records that during 1974 there was a boom in the number of cyclists using the Park as a result of private bicycle hire services opening up nearby. During this time many "special interest groups all competed for a place in the Park". This is a problem that still exists today.

Grand Drive – 3.5 kilometres of beauty

Centennial Park is Sydney's only example of a Victorian-style urban park and indeed the visionary carriageway of Grand Drive emulates that Victorian-era character.

Today Grand Drive is essentially made up of five concentric circles, with the outer fifth track used for cycling or rollerblading, fourth (and largest) for car driving, third for car parking, the second is a paved pathway for pedestrians and the inner track being dedicated to horse riding.



The close proximity of each of these competing activities requires careful planning and practices, and communication to ensure the safety of all Park users.

Rules to observe...

Like many parks around the world, Centennial Parklands has rules and regulations to ensure the safety and enjoyment of all visitors. A recent review of cycling incidents identified a number of "hot spots" in the Parklands – places where breaches are regularly compromising visitor safety. These were:

- Cycling contra-flow on footpaths (particularly from the Restaurant to Robertson Road Gates)
- Speeding around Grand Drive
- Not stopping at stop signs (at Hamilton/Grand and Parkes/Grand Drive intersections)

The Trust has implemented a Cycling Action Plan that will be rolled out over the next six months. Park Rangers enforce the rules under State law. If you ignore or break them, you could be fined. Please remember:

- Cyclists must observe the 30 km per hour speed limit, wear helmets and follow one-way traffic directions.
- Cyclists are not permitted to ride in packs of more than 16 and be closer than 3 metres.
- Bicycle racing is prohibited, unless specifically approved by the Trust.

The planning process

In 2002 the Centennial Park and Moore Park Trust completed a Transport, Access and Parking (TAP) Plan to improve access, safety and environmental sustainability.

The TAP recommended a number of key actions that were grouped into four broad categories:

1. Improve access to the Parklands
2. Improve access within the Parklands and between the Parks
3. Better manage parked vehicles
4. Improve internal arrangements within Centennial Park

Over the next 12 months the Trust will review the cycling-related elements of the TAP Plan, with particular reference to the first category.

The regional cycle network

The regional cycle network has a number of sections that link into, and run through, Centennial Parklands. The Trust has identified a number of places, or "missing links", where tracks can be upgraded to better support the network.

In 2008 the Trust completed a shared pathway at the perimeter of Queens Park. This effectively linked Queens Park Road at Newland Street with the corner of York and Darley Road, and in doing so connects Bondi Junction to Centennial Park – an important part of the regional cycle network.

This financial year will see the upgrade and widening of the existing footpath that runs down the south side of Cleveland Street (Moore Park) between Anzac Parade and South Dowling Street. This narrow path is currently in poor condition, however \$400,000 has been committed to upgrading and widening this path in a similar style to the Queens Park shared pathway.

Another "missing link", which although identified remains as yet unfunded, is the Oxford St pathway linking the Eastern Suburbs with the city centre. Discussions are continuing with relevant councils and organisations to prioritise this project.

A number of local and state government forums and projects have also been established recently to examine local and subregional transport issues in Sydney's east with a particular focus on cycling. The Trust has been actively involved in these groups to ensure the outcomes align with the TAP Plan and to ensure a coordinated cross-government approach.

You can download regional cycle maps at www.rta.nsw.gov.au.

Cycling events – enjoy and learn

Centennial Parklands has always been associated with many important cycling events. In 1938 the Empire Day cycle race was held in the Park and in 2000 the Parklands was used as an Olympics and Paralympics venue for the Road Cycling events.

Regular cycling events are held in Centennial Park with one of the largest being Ride for Life (held in winter, www.rideforlife.org.au). The event is a family-friendly day that raises funds for the Prince of Wales Oncology unit.

The Trust also runs various cycling skills workshops for adults and children. Subscribe to our What's On eNewsletter at www.centennialparklands.com.au/enewsletters for regular updates.



Biking is great family fun

Being active as a family is important for your health and for your children's. Bike riding in a safe place like Centennial Park is great for riders of different ages and abilities.

The Learners Cycleway is an ideal circuit for young children learning to ride. And when they get too tired they can enjoy the great playground adjacent! Both are located on Grand Drive, between Randwick and Robertson Rd Gates.

For families with older children, riding together around Grand Drive is great fun. You can easily hire bikes at Centennial Park Cycle Hire, located on Grand Drive (near the Federation Pavilion). They are open 9.00 am–5.00 pm, seven days a week. Visit www.cyclehire.com.au for more information.

Car Free Days are also a great way to enjoy being on a bike without any cars to worry about! Car Free Days are held on the last Sunday of every season and have been a popular event since 1992. This spring Car Free Day will be held on Sunday 29 November, so why not make it your next family cycling day!

Sign up to our Cycling eNewsletter

Keep informed about issues relating to cycling by signing up at www.centennialparklands.com.au/enewsletters.

¹ Centennial Park A History by Paul Ashton and Kate Blackmore

Butterflying

Common Grass-blue

Welcome to *Butterflying*, an interesting diversion from the usual Twitcher's Corner! I hope you enjoy reading about this fascinating butterfly. Twitchers Corner will return next issue.

The **Common Grass-blue** butterfly is very small and is only about the size of your thumbnail. The undersides of the wings are silvery grey with faint light brown spots. The upper surface of the wings are purplish-lilac and show well when the butterfly holds its wings open. The male's upper wings are slightly deeper in colour than the female. They have a weak fluttering flight usually close to the ground over grass. When they get close they fly around each other in tight circles before flying off. When they settle on the grass they usually don't stay for long before flying off again.

The lifecycle of this butterfly is very interesting. The female lays tiny white eggs singularly or in clusters on the leaves of the larval food plant. These plants are usually clover in lawns or other legumes. The larva hatches from the egg and is a green caterpillar with a darker green stripe down the middle of its back and a white stripe down each side.

The caterpillar eats the buds, flowers and young leaves of the food plant. They also have a close relationship with ants. A substance is secreted from special glands that stimulate ants to respond to the caterpillar. This substance is a highly nutritious food source for the ants. While the ants are around the caterpillar they provide protection from predators and parasites.

The pupae are green with darker markings and are attached to the underside of the leaves of the caterpillar food plant. The adult butterfly emerges from the pupa and the whole production starts



all over again. This cycle can take place several times a year. I think it's worth trying to find this beautiful tiny butterfly and I marvel at its hidden life story.

Trevor Waller is a bird enthusiast with more than 15 years behind the binoculars. He is a member of various bird watching clubs in Sydney, including Birds Australia, and conducts the Parklands Birdwatcher's Breakfasts each season. The next Birdwatcher's Breakfast will be held on Sunday 22 November 2009.

Please visit www.centennialparklands.com.au/whatson for details.

Plant of the Season

Canna "tropicanna"

The Canna lily (*Canna "tropicanna"*) is a small perennial plant native to tropical South America. Cannas are commonly grown in Sydney and particularly Centennial Parklands as they are a very reliable and attractive plant.

The "tropicanna" cultivar is a spectacular foliage plant; the large, elliptical leaves are generally deep red in colour with yellow, orange and green variegations. Cannas grow from underground rhizomes similar to the ginger plants. They usually die back over winter before new growth emerges in the spring. This is followed by bursts of bright orange, Orchid-like flowers that continue into summer.

Cannas can tolerate a variety of soils and situations provided that adequate moisture is available. They prefer full sun but will also grow quite well in part shade.

Propagation of the Canna lily is by dividing and replanting the rhizomes.

Where can it be seen in the Parklands?

Canna "tropicanna" can be found on the northern side of the Parklands Restaurant where it has been planted amongst other sun-loving, tropical plants.

Followers of Frank Hemmings' column, **Native Watch**, can read it online at www.centennialparklands.com.au. This season, Frank profiles the Native Broom (*Viminaria juncea*).



Beautiful Butterflies!

This spring will see lots of butterflies in Centennial Parklands! If you are really lucky, you might even find a Matthew's Blue Butterfly like the one in this craft activity.

Some interesting facts about butterflies:

- A butterfly's body and wings are covered in tiny scales that are usually brightly coloured and make pretty patterns.
- A butterfly's front pair of feet are often sensitive to the smell of nectar or a mate – can you imagine if you could smell with your feet?!
- Did you know that Australia's largest butterfly, the Cape York Birdwing, has a wingspan of up to 14 centimetres?

If you want to find out more about these fascinating creatures, come along to our "Beautiful Butterflies" kids program tailored for children aged between 2 and 5 years. Children will make their very own butterfly to take home.

See www.centennialparklands.com.au for more details.

Competition

In a few months we will open our new Learning Centre – a place where we can run lots of activities for children. But it needs decoration. So we would like you to draw a picture of your favourite colourful butterfly. You may need to research it to get the colours right.

All entries will be hung in the Learning Centre for its launch, and the best entry in each category will win a family Spotlight Prowl. There will be 2 categories: Ages 4-7 years and ages 8-12 years.

Send your pictures to **Centennial Parklands Butterfly Competition, Locked Bag 15, Paddington NSW 2021** or drop it in to the Visitor Information Counter next to the Restaurant (open 7 days a week) before 23 September 2009. Make sure you include your name, age and phone number with your entry. *Full terms and conditions at www.centennialparklands.com.au.*

Congratulations to Maisie Nugent, winner of last season's competition.

Make your own Butterfly Fridge Magnet

You will need:

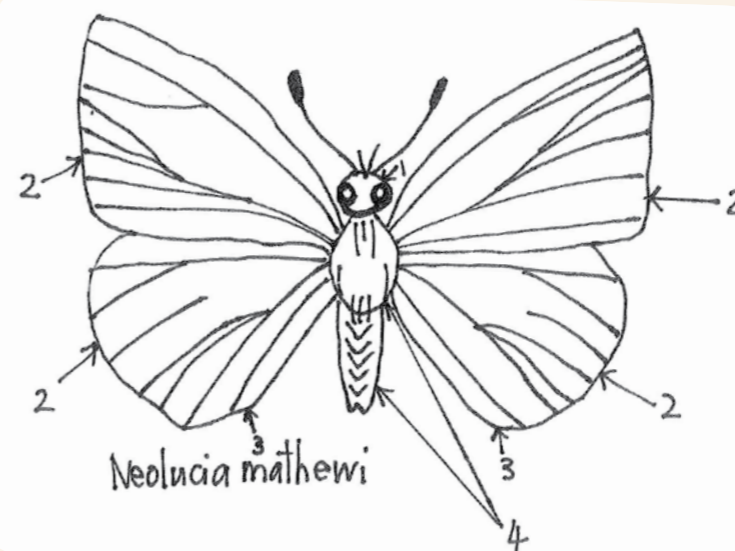
- colouring pencils
- scissors and glue
- a magnet (re-use an old one, or you can buy at a craft shop)

Colouring Scheme.

1. dark brown
2. dark orange
3. yellow
4. light brown

Instructions:

- Colour and decorate the butterfly below using the colour scheme suggested.
- Cut around the outside of the butterfly.
- Fold the wings of the butterfly up slightly.
- Glue a magnet onto the underside of the butterfly's body and you have a fridge magnet! Decorate with glitter for extra effect!



Ask a Ranger

What do you call a baby swan?

A baby swan is called a "cygnet" (pronounced sig-net).

Why does the swan family on One More Shot Pond sometimes leave the pond?

Unfortunately the swans leave the pond because of stress or danger. And this family of swans is under additional pressure because the 'cob' (the male swan) has a damaged leg after being attacked by a dog while protecting his family.

Park Rangers monitor our wildlife closely but try not to interfere unless there is a serious concern for an animal's health. They also talk to dog owners about why some areas of the Park are on leash, like around our ponds, and other areas are off leash.

You can contact a Park Ranger at any time if you have a concern about an animal in the Park, by calling (02) 9339 6699, or stop by the Visitor Information Counter at the Restaurant facility.



GET INVOLVED

The seven most beautiful leaves in Centennial Parklands



1. Leave a donation



2. Leave a tree



3. Leave as a Friend



4. Leave as a sponsor



5. Leave a bench



6. Leave as a volunteer



7. Leave a bequest

Contact the Foundation

To find out more about any of these stories, or to make a donation:

Ph: (02) 9339 6633

Email: foundation@centennialparklands.com.au

Web: www.yourparklands.org.au

Foundation

Stories from National Tree Day



On Sunday 2 August 2009, the Foundation hosted a community tree planting as part of Planet Ark's National Tree Day. Forty native trees were planted on the rocky outcrops below Carrington Drive. A variety of indigenous species were planted which will attract a range of fauna, birds and insects.

Grandchildren of the late Pamela Carroll planted a Plum Pine tree in her memory on National Tree Day. Pamela was actively involved in the Centennial Park Residents Association as well as a representative for the "Save the Parks" campaign in the 1970s.

The Foundation also funded a National Tree Day for Schools event on Friday 31 July. Two hundred students from Reddam House, Ascham Junior, Bondi Montessori and Sydney Girls High School joined us to plant native trees and rushes along the banks of Kensington Pond, greatly improving the pond edge.

If you are interested in learning more about our trees, please join our Senior Arborist, Ted Hoare, for his highly regarded Tree Tour on Wednesday 21 October. Best of all, it's free!

Thank you to all our generous donors who contributed to the success of National Tree Day. Funds raised will go towards the vital Tree Replacement Program which aims to replace 60% of the Parklands' 15,000 trees over the next 40 years.

Centennial Park weather station launch

On Thursday 25 June 2009, the restored historic weather station was returned to Centennial Park situated on Parkes Drive close to its original position. Its restoration was made possible with the generous support of the NSW Heritage Branch, Department of Planning, through its Heritage Grants program in matching the Trust's funding towards this project.

Chair of the Foundation, Sarah Whyte, welcomed Terry Bluett, former Observations Manager for the Bureau of Meteorology, to the launch. Sarah said: 'On behalf of the Foundation, I would like to thank Terry very much for not only donating his time and research skills to this project but also for providing the two thermometers which will be housed in the weather station.'



Although the weather station is not in use for regular measurements, it will provide historical and educational information to Park visitors as well as being incorporated into the Parklands' school education and interpretation programs.

For more information on the weather station visit www.yourparklands.org.au.

New Benefactors

The Dack Family

Brian Cameron

Joan Gordon

The Mersiades Family in honour of Barry Milch

Yvonne Hayes, Roger Davis, Sacha Davis and their families

Frank Hansen and Family

Blain / Diacopoulos Family

Dr Sian Graham

The Henry Pollack Foundation

Marcia Shepherd

Susan Devenish-Mearns

Family of the late Hon. Peter Sydney Maitland Phillips AM

The Sangster Family



Evergreen chefs (from left) Colin Fassnidge, Warren Turnbull, Matthew Kemp and Darren Foots

Top Sydney chefs get behind Evergreen

The Centennial Parklands Foundation's second Evergreen Dinner will have four of Sydney's most respected chefs preparing an impressive menu to raise funds for a new inner circle of trees inside Grand Drive, Centennial Park.

Let us introduce you to the Chefs:

Warren Turnbull

New Zealand-born Warren opened Restaurant Assiette in 2005 quickly earning a reputation for high quality food at affordable prices. He has held one Chef's Hat in the SMH Good Food Guide for three consecutive years.

Colin Fassnidge

Irish-born Colin, creator of Four in Hand's innovative food, has earned one Chef's Hat in the SMH Good Food Guide for four consecutive years.

Matthew Kemp

British-born Matthew has gleaned his skills from restaurants on all corners of the globe. His Restaurant Balzac was awarded two Chef's Hats in the SMH Good Food Guide 2008-2009.

Darren Foots

Executive Chef Darren has managed restaurants at fine resorts in and around the Pacific and was also executive chef for Bills Restaurant in Sydney. He is currently the executive chef at Centennial Parklands Dining.

Book your tickets

Tickets are \$200. To find out more about the Evergreen Dinner, and book your tickets, visit www.yourparklands.org.au/evergreen.

Friends

Jumping on board – Hoyts Cinema!

Hoyts Cinema at the Entertainment Quarter will be offering four La Premiere tickets every season to *Friends* lucky enough to win our fantastic competitions. La Premiere is a deluxe movie-going experience, with unobstructed views from luxurious, custom-made sofa style seats, a gourmet menu and reserve wine list with personalised in-cinema waiter service.

Sign up to our *Friends* eNewsletter at www.centennialparklands.com.au/newsletters and keep up to date with our seasonal competitions.

Friends photo of the season!

Vashti Farrer, children's author and keen amateur photographer, has captured a magical early morning scene in Centennial Park – now featuring on the Centennial Parklands website.

You too can submit your photos and have them featured by signing up as a *Friend* today! It's just \$55 per annum and your money contributes to the important work of the Centennial Parklands Foundation. Sign up today at www.friends.net.au.

And if you want to improve your camera skills, you can join one of our Adult Introduction to Photography classes. More details online and of course *Friends* get a 20% discount!



HELP!

Volunteers wanted for:

- bush regeneration
- visitor information services
- plant propagation and nursery development

www.yourparklands.org.au

Ph: (02) 9339 6699



foundation and friends

www.yourparklands.org.au

www.friends.net.au

Meet our Evergreen chefs
National Tree Day success
Weather Station launched

Spring 2009



**FRIENDS OF
CENTENNIAL
PARKLANDS**
Love your park



CENTENNIAL PARKLANDS
FOUNDATION