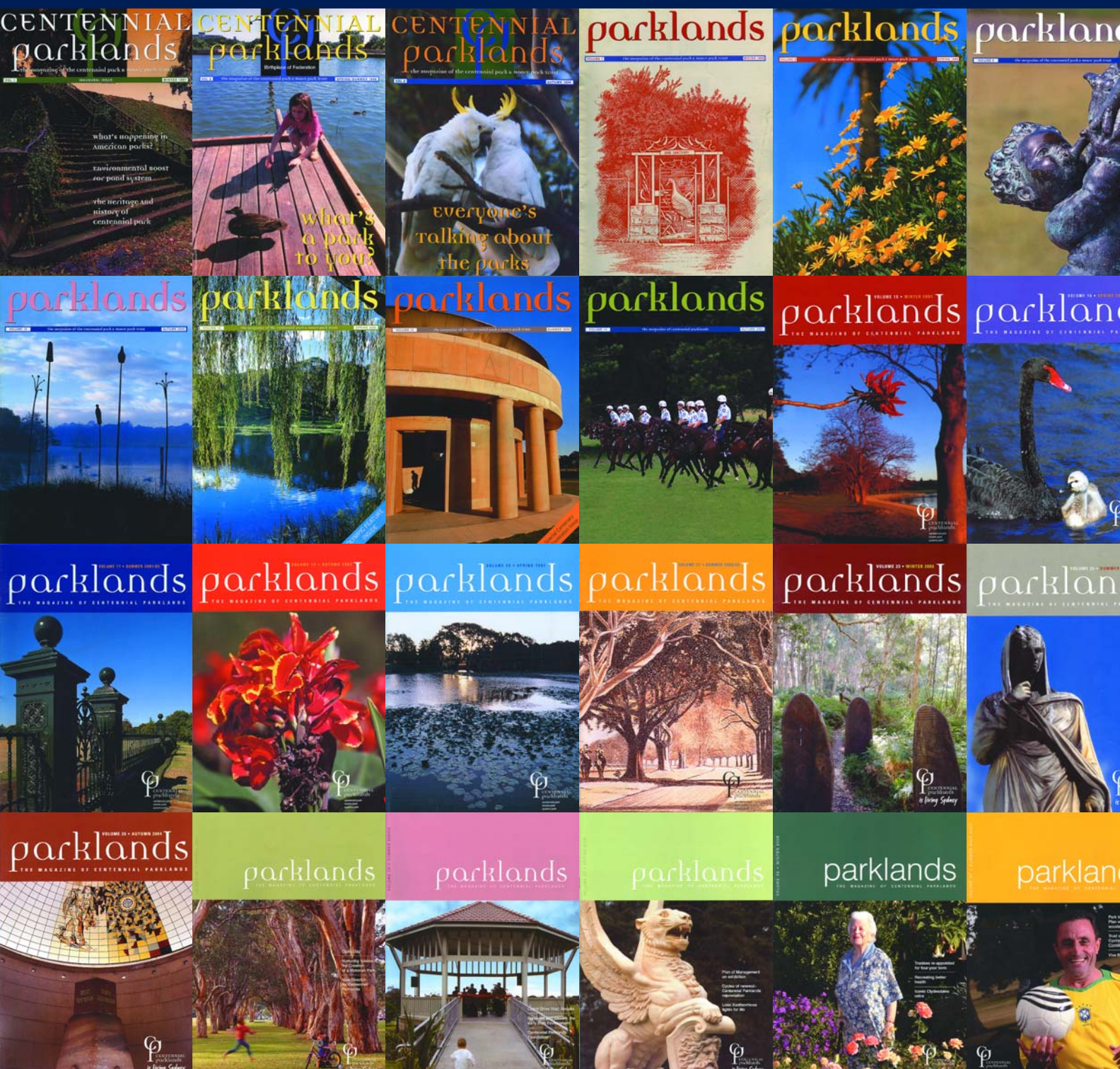


# parklands

THE MAGAZINE OF CENTENNIAL PARKLANDS







# Directions

aspect that I find fascinating is the covers. Each cover provides a snapshot of life in the Parklands and, in a sense, have catalogued the things that have made these Parklands a favourite for many people over the years.

I am pleased to confirm that our new Minister is the Honourable Graham West MP, Minister for Gaming and Racing and Minister for Sport and Recreation.

This issue of *Parklands* magazine marks its 10 year anniversary. First published in winter 1997, the magazine has contained stories about many of the remarkable people, events and projects that have made Centennial Parklands what it is today.

Looking back over its many issues, the

Our People. Our Places. Our Partners. Our Potential.

These are the themes we will explore over the next year. This issue we focus on *Our Potential* with a synopsis of a presentation on 'Planning for Future Demand' given by Centennial Parklands at the recent NSW Parks and Leisure conference (see pages 6-7).

Through environmental awareness and sustainability, our operations are also geared towards developing our potential. For

example, this issue of *Parklands* and the What's On guide have been printed on paper that is not only 100% recycled, but 90% derived from post-consumer waste (using office or home waste).

As you read this anniversary issue of *Parklands* I encourage you to give us feedback via the Reader Survey in this issue. Your feedback is vital to ensuring this magazine remains relevant and interesting reading for the next 10 years and beyond.

Enjoy the winter's coolness.

Steve Corbett  
Director and Chief Executive  
Centennial Parklands

## OUR PEOPLE OUR PLACES OUR PARTNERS OUR POTENTIAL



*Parklands* magazine is published quarterly by the Centennial Park and Moore Park Trust: Locked Bag 15, Paddington NSW 2021

Centennial Parklands is managed by the Centennial Park and Moore Park Trust.

Trustees: Professor John Niland AC (Chairman)  
Annabelle Bennett AO David Leckie  
Yvette Pietsch Allan Young  
John Walker Sarah Whyte  
Margaret Varady AO

The Centennial Park and Moore Park Trust acknowledges the Cadigal as the traditional custodians of the land that is now known as Centennial Parklands.

Editor: Rachel Maiden  
rachel.maiden@cp.nsw.gov.au

Contributors: Trevor Waller

Photography: Chris Gleisner, Stephen Ward, Tim Mooney, [www.sydneywaterfronts.com](http://www.sydneywaterfronts.com) (Good Vibrations), Newspix/Toby Zerna (Paul Roos)

Cover: A selection of covers from the last 10 years of *Parklands* magazine.

# Contents

|   |    |
|---|----|
| Parkbench                                   | 3  |
| Welcome Trippas White                       | 4  |
| Volunteers secure heritage award            | 4  |
| Events Wrap-up                              | 5  |
| Planning Our Future                         | 6  |
| Twitcher's Corner – Silvereye               | 8  |
| A Walk in the Park with Paul Roos           | 8  |
| Plant of the Season – Giant Candles Banksia | 9  |
| Introducing the Parade Grounds Café         | 9  |
| <i>Healthy Parks Healthy People</i>         | 10 |
| Foundation and <i>Friends</i>               | 11 |
| Visitor Information                         | 12 |

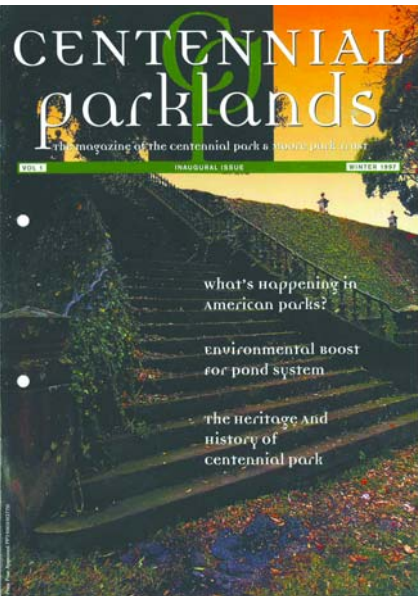


# Parkbench

## Don't risk it – stick to the boardwalks

Lachlan Swamp is a native plant and animal habitat. The boardwalks, built in 1998 as part of the Lachlan Swamp Nature Trail, were specifically designed to protect the sensitive plant and animal habitats. New signage has recently been placed in the area to remind people to remain on the boardwalks and pathways in order to protect this area. Rangers can, and will, fine people for not doing so (clauses 11 and 16 of the Trust Regulations 2004 will apply).

## Ten years on: tell us what you *really* think



Inaugural issue of *Parklands* magazine

The *Parklands* magazine was first produced in winter 1997. We've enjoyed producing magazines in that time and have celebrated major milestones in the Parklands', and in Sydney's life. We've observed the Olympics and the Centenary of Federation. We've recalled our history, talked about our environment and explored our evolution. Now it's time for you to tell us what you think of this publication. Enclosed is our Reader Survey. We hope you will take a few minutes to complete it and return to us using the Freepost address. All completed surveys will go in the draw to win a \$120 gift voucher at the Botanic Gardens Restaurant, courtesy of Trippas White Catering.

## Clean Up Australia Day triumph

Clean Up Australia Day in Centennial Parklands was a focus for three days of intense rubbish-ridding activity.



Elizabeth Hii, Centennial Parklands Asset Systems Officer, collecting rubbish

Over that period 220 volunteers collected 149 bags of rubbish from 20 different locations across the Parklands. It started on Tuesday 27 February when 39 Parklands staff members took part in a clean up and team building exercise, collecting 39 bags of rubbish. Then on Saturday 3 March, 140 volunteers from the Church of Jesus Christ of the Latter Day Saints collected another 80 bags of

rubbish. The traditional Clean Up Australia Day event on Sunday 4 March saw 41 volunteers, including a large contingent of participants from Ascham Girls High School, collecting 30 bags of rubbish. Thank you to everyone who participated in making this our most successful Clean Up Australia Day event!

## Gold Gold Gold for the Equestrian Centre

Friday 13 April was certainly not an unlucky day for the Centennial Parklands Equestrian Centre as patrons and guests celebrated the grand opening of the newly surfaced covered arena. The new surface is made of a special mix of sand and a complex bioscientific agent known as Stabilizer Gold. Stabilizer Gold helps the surface hold the correct moisture level and (apart from contributing to our ongoing commitment to reduce water use), stops it from over compacting and gives more rebound to horses working on it. The arena is 75m x 45m – one of the largest covered riding arenas in the world – and with more than 200 horses stabled at the Centre, the new surface is well designed to cope with high equine traffic loads.



Olympic Gold Medallist Stuart Tinney displays his skill at the opening of the new arena

## Moore Park Golf Improvements

Stage One of the Golf Course Improvement Plan is underway. These works will involve design, playability and safety improvements to three of the current holes. Throughout these works, however, the Trust will ensure that 18 holes, at existing par, are playable at all times. The Trust is also undertaking a major refurbishment and upgrade of the historic Golf House building and precinct. The new building will feature new restaurant and bar facilities, a Pro Shop, meeting rooms, amenities and upgraded members locker rooms. The refurbishment is expected to be completed in 2009. Visit [www.cp.nsw.gov.au/golf](http://www.cp.nsw.gov.au/golf) for more information.



## Welcome Trippas White

The Centennial Park and Moore Park Trust is delighted to welcome Trippas White Catering as the new licensee of Centennial Parklands Restaurant. Trippas White's selection followed a rigorous and comprehensive tender process completed in March 2007.

Trippas White is one of the nation's premier caterers. Its venues include the Art Gallery of NSW, Botanic Gardens Restaurant, The Mint and the National Gallery of Australia in Canberra. With 17 years experience, its focus is on quality, modern food with personal, friendly service.

Although the newly refurbished restaurant will not open until autumn 2008, Trippas White is operating the temporary café adjacent to the restaurant (see page 9 for details).

The refurbishment and upgrade of the restaurant will bring the facility into line with the latest industry and community

standards. The project is a recognition of, and response to, increasing expectations of fine dining and casual eating spaces from a rapidly growing resident and visitor clientele. The new facility will incorporate a take-away kiosk, table service café and fine dining restaurant.

Importantly, the attractive elements of the much loved old restaurant will be retained and incorporated in the new design. Margaret Ogston, Director Strategic Planning and Projects for Centennial Parklands said, 'The architect's plans include maintaining many of the existing landscape and design elements, especially those that are historically significant. Special measures will ensure these elements are protected during the



Artist's impression: North East view towards the new restaurant

refurbishment process.'

Friends of Centennial Parklands will benefit greatly from the new catering arrangements. They will now receive a 10% discount off purchases at all Trippas White venues (see page 11 for details).

Visit [www.cp.nsw.gov.au/restaurant](http://www.cp.nsw.gov.au/restaurant) for more information on the licensee and the refurbishment.

With many industry awards to their credit Trippas White is a very welcome addition to the Parklands.

## Volunteers secure National Trust Award



Volunteers at the ESBS site

Centennial Parklands has won a significant National Trust Heritage Award for its Eastern Suburbs Banksia Scrub Rehabilitation project. The award, in the category of Conservation Landscape Heritage, was presented at a lunch held in Sydney in March 2007.

As readers of *Parklands* know the Eastern Suburbs Banksia Scrub (ESBS) is a threatened community, existing as it does in one of Australia's most urban environments. The award recognised the progress towards the completion of primary works at the two main sites –

York Road and the Bird Sanctuary – realising the creation of a comprehensive ESBS community.

The award citation noted the significance of this landscape conservation project, recognising it as an important effort to

conserve a bit of natural heritage in the midst of an urban area. The judges were very impressed that the project was completed with the help of committed community volunteers.

Steve Corbett, Centennial Parklands Director and Chief Executive, said, 'The ESBS project has now been running for more than three years. Its success is due in no small part to the Parklands dedicated force of volunteers that have helped deliver stage one of this important conservation project and in the process have secured this prestigious award for the Parklands. On behalf of the Centennial Park and Moore Park Trust I thank them sincerely for their tireless efforts.'

The Awards highlight the importance of built, natural and cultural heritage. Some 20 different categories provide opportunities to demonstrate the diversity of heritage and heritage conservation.

# Events Wrap-up

## Enjoying the 'Good Vibrations'

Saturday 17 February saw more than 35,000 people attend the largest Good Vibrations Festival since its inception four years ago. This year the popular event



Crowds enjoying the 'Good Vibrations'

The musical offerings had a strong dance theme with crowds packing the 'Chinese Laundry' as well as Star Bar and B Bar. Snoop Dogg was a surprise performance on the main stage prior to the much anticipated and popular Beastie Boys.

was held in the larger venues of the Parade Grounds and Brazilian Fields – delivering fantastic ambience to the festival together with the blue skies and sunshine of a summer's day.

## Inaugural V Festival

The Pixies first performance in Australia was a highlight for fans, amongst a crowd in excess of 30,000 people drawn to Centennial Park for the inaugural V Festival on Saturday 31 March.



V Festival showcased a variety of international and local groups

After building an enviable reputation over the last 11 years as the best of the British music festivals, V Festival spread its wings internationally in 2006, launching in Canada and the USA. This year's event in Centennial Park marked the first time the event was staged in the southern hemisphere.

The line-up for V Festival brought together a rich variety of influential groups, many of whom have never toured these shores before as well as showcasing a host of new up and coming Australian bands.

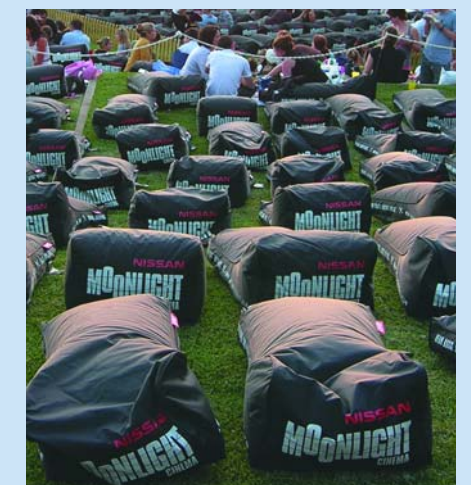
## Another successful season for Moonlight Cinema

March 2007 saw the conclusion of another successful season of outdoor cinema in Centennial Park's Belvedere Amphitheatre. Over the three month season more than 48,000 people enjoyed the movies and the atmosphere of Moonlight Cinema.

The Gold Grass experience was very popular with patrons indulging in a glass of bubbly while relaxing in a bean bag located in a specially reserved area. Catering was provided by The Fringe Bar – its second season on the job – and was enjoyed by all.

This year the film program featured full moon 'thrillers' and other themed film nights.

**At the conclusion of the season, Carrington Drive has been returned to two-way traffic flow.**



The Moonlight Cinema bean bags, part of the Gold Grass experience



# Planning Our Future

What is the role of parks in our future? This was the important question posed by Mark Taylor, President of Parks and Leisure Australia, at the organisation's inaugural NSW Regional Conference held in March 2007 in Wollongong.

**Fact:** The current ratio of open space to population in the City of Sydney is 2.36ha per 1000 people, which is below the widely accepted industry standard of 2.43ha per 1000 people.

The conference agenda – to explore the future for parks – was a challenging one, because Park professionals are dealing with an increasingly complex range of issues in parks planning and management. 'Today we need to be financial planners, political lobbyists and community managers,' Mark said.

Park expansion in the second half of the twentieth century was mostly about rejuvenating former industrial and cultural landscapes rather than natural landscapes. So, the conference asked, what will be the parks of the twenty-first century? What will be the response of park managers to the changing social issues of the next twenty or so years? What other issues will impact on the parks of the future? Will it be increasing population densities, for example? Or climate change? Or an active ageing community?

At the conference Trust staff Bernadette Walker, Manager Visitor Programs, and Geoff Reinhard, Planning Coordinator, jointly presented a key Centennial Parklands paper. Together they outlined the extent of increased demand for and visitation to the Parklands, and how

Centennial Parklands has established strategies, plans and programs to plan for this future demand.

It pointed out that while the Centennial Park and Moore Park Trust is charged with maintaining these Parklands of

national significance for the people of NSW, it must also provide for the needs of the local community.

The recently released draft *Open Space and Recreation Needs*

*Study*, prepared by the City of Sydney Council, highlights the key role that major State Government regional open spaces such as Centennial Parklands has for the City of Sydney's community.

Technically only Moore Park is part of the City of Sydney's local government area. But the Study acknowledged that Centennial Parklands as a whole provides a valuable and popular recreational resource for the City's residents.

The Study detailed the increasing pressure that will be placed on recreational areas, including Centennial Parklands, by population growth and changing recreational preferences in the City of Sydney.

In terms of population growth, the Study

estimates that by 2016 the City will have a population of 199,000 people (compared with an estimated 150,000 in 2004). Much of this population increase is occurring in the Inner South and South East Planning Districts. Redevelopment of the Redfern-Waterloo Authority area and the Green Square Urban Renewal Area is creating large numbers of new residents within 1–2 kilometres of Centennial Parklands. In short, an extra 40,000 people are expected to reside in the area along the Parklands' western boundary in the next 20 years.

In addition to population growth in the inner city, a discernible shift in lifestyle and recreation preferences amongst the residential population is increasing demand for open space in the region. This shift is characterised by rising interest in health and fitness which in turn is encouraging more people to use parks and open spaces.

It is clear from the Study that the Centennial Park and Moore Park Trust and the Council will need to continue to work closely together to ensure sustainable open space with recreational opportunities is continuing to be accessible to the local and broader communities.

The Study did not address the potential impacts on non-Council parks and open space areas due to increased visitation.

**Fact:** Only Moore Park is technically considered to be within the City of Sydney's local government area. However, if you include neighbouring Centennial Park and Queens Park the three combined contribute 53.7% of the total area of open space available to the City's inhabitants.

By necessity, however, the Trust has already developed a range of strategies to address these pressures.

Centennial Parklands Plan of Management is undoubtedly the most detailed document dealing with the current and future management of the Parklands. It establishes strategic directions intended to ensure that both the integrity of the Parklands is protected and the living heritage is conserved.

Within this broad strategy there is no one catch-all plan but rather a number of plans and strategies. The Sports Strategy is one example among many, the joint paper stated. Commencing in 2004, the Sports Strategy recognised the Parklands' limited capacity to cater for all the community's sport and recreation needs.

It highlights the growing need to balance sport with informal recreation and addresses the issue of managing overuse in a number of grounds, in particular Queens Park.

The most successful outcomes have seen the development of a set of guiding principles to managing bookings and establishing dialogue between the Trust and regular sports group users that has resulted in a more flexible approach to managing demand. The Strategy also developed criteria for grading grounds to determine the appropriate level of use.

The Queens Park Master Plan, commenced in 2003, aimed to review the landscape character of Queens Park and consolidate its individual identity. One of the key issues noted in the Plan is the huge influx of visitors that arrive by car to attend Queens Park sports events. The plan also looked at ways to improve the cycle and pedestrian links between Queens Park and the rest of the Parklands.

One outcome is the shared pedestrian/cycle path that is being installed in the northeast section of Queens Park. The plan also led to the development of biannual seasonal hirers meetings, where hirers meet and negotiate their calls on sports fields to minimise overuse on the fields.



Construction of the Queens Park shared pedestrian/cycle path

The Moore Park South Master Plan, commenced in 2001, is providing a framework for renewal and redevelopment of Moore Park South. It aims to increase visitor awareness and appreciation of the area by developing a broad range of activities including active sports, informal recreation and cultural activities.

This Master Plan has given rise to the Golf Course Improvement Program, new pedestrian pathways and a planning structure for the ES Marks athletics field. In conclusion the joint paper emphasised that these plans are ongoing and continue to impact in a positive way on the overall planning and management of Centennial Parklands.

The conference also examined a range of other highly topical areas such as Sports

Field Capacity, Youth Spaces, Active Living and Water/Infrastructure Resources – the later including a presentation by Centennial Parklands Director Park Assets, Ian Innes, on the topic of 'Adapting to drought – is brown the new green?'

Centennial Parklands is a member of Parks and Leisure Australia (PLA), a key professional association which provides a broad range of services to members of the parks and leisure industry.

The PLA aims to promote co-operation and mutual assistance between persons and organisations associated with public parks, botanic gardens, open space environments, recreation/leisure facilities and services.

**Projection:** The City of Sydney's estimated population was 150,000 in 2004. This is expected to increase to 180,000 by 2009 and 199,000 by 2016. Much of this increase is occurring in areas within 1-2 kilometres of Centennial Parklands.



## Twitcher's Corner

### Silvereye

By Trevor Waller



The aptly named Silvereye

A small bush bird that can be found in the Parklands year round is the beautiful Silvereye. During winter the resident mainland birds are joined by the migrating birds escaping the southern winter in Tasmania.

Silvereyes are mainly yellow-green with a grey breast and back. The head

is yellow and they have a short pointed black bill. The most striking feature of the face is the ring of white feathers around the eye. They have a brush tipped tongue which they use to eat nectar. The birds from Tasmania have rich chestnut coloured flanks and stand out in a mixed flock of birds. The migrating birds generally travel in flocks at night, and during the day travel through the treetops feeding as they go. They like to be in flocks and can form large gatherings.

When feeding they work slowly through the foliage searching for insects, nectar, berries and fruit. While foraging for food they move constantly from tree to tree with bouncy flight and much calling. They are likely to be found in a diverse range of habitats including woodland, forest, coastal heath, mangroves as well as parks, gardens and orchards.

Breeding takes place between September and January. The nest is a small deep cup of grass bound together with webs. It is hung under a branch by the rim and is usually very well hidden in dense foliage. The female produces from 2 to 4 eggs and both sexes share the nest building and incubation duties. The eggs hatch after about 10 days and again both sexes see to the feeding of the chicks. There are many places in the Parklands where you might see Silvereyes, and in winter keep a look out for the birds from Tasmania.

**Trevor Waller is a bird enthusiast with over ten years behind the binoculars. He is a member of various bird watching clubs in Sydney, including Birds Australia, and conducts the Parklands Birdwatcher's Breakfasts each season. The next Birdwatcher's Breakfast will be held on Sunday 5 August. Visit [www.cp.nsw.gov.au/whats\\_on](http://www.cp.nsw.gov.au/whats_on) for details.**

## A Walk in the Park

### with Paul Roos



Paul Roos and his family enjoy time together in Centennial Park

Paul Roos was widely considered one of the finest AFL players of the modern era with 17 impressive seasons with the Fitzroy Lions and Sydney Swans. He is also now considered one of the Swans most successful coaches, guiding the team to four finals

appearances since taking on the senior

role in 2002. Paul has been training in Centennial Parklands since he joined the Swans in 1995 and now as coach he brings the whole team to the Parklands for training. He also enjoys spending time in the Parklands with his wife, Tami, and sons, Dylan (age 12) and Tyler (age 10).

#### **Favourite place in Centennial Parklands to kick a football (a red and white one, of course)?**

In Queens Park, behind the playground, is where I like to kick a footy with the boys.

#### **Best place to take kids in Centennial Parklands?**

We like to ride our bikes around Centennial Park and the kids enjoy feeding the ducks at the Duck Pond. We often go to the movies, or for coffee at the Entertainment Quarter (EQ). The Strike Bowling Bar at the EQ is a real hit with the whole family.

#### **Who would you most like to take for a walk in Centennial Parklands and why?**

My family because it is a chance for all of us to connect with nature and admire the beauty of Centennial Park. We can enjoy a very unique piece of landscape that happens to be set in the midst of this bustling city we live in.

#### **Best part of winter?**

I just love it when winter rolls around – of course it's football with the kids. What else!

#### **What's in your picnic basket?**

Salad rolls, packets of chips and bottles of water.

#### **What do you think Centennial Parklands will be like in 100 years?**

I hope unchanged and still as beautifully manicured as it is today. I think it is important to maintain this great spot for the runners, the bike riders and horse riders, or just to admire the flora and fauna.

## Plant of the Season

### Giant Candles Banksia

The cultivated variety Giant Candles Banksia is a large flowering shrub recognised as a hybrid between east coast species of the Heath Banksia, (*B. ericifolia*) and Hairpin Banksia, (*B. spinulosa* var. *spinulosa*) that arose in cultivation during the late 1970s in Brisbane, Queensland. The plant grows five metres high and wide with dense foliage to the ground and is a bird attractant.

This plant belongs to the Protea family which includes Macadamias, Grevilleas and South African Proteas from which the family name is derived. Banksias are predominantly Australian with 72 known species.

This plant's particular appeal is the orange flower spike measuring 38–40cm long and 8–10cm wide blooming through autumn and winter. The flower spike, or inflorescence, is made of hundreds of

individual orange flowers which, when flowering finishes, turn grey and remain long after flowering.

The green leaves of this cultivar are around 4–5cm long with a dull white underside and are arranged in a whorled effect around the stem.

The plant performs well in mild to warm climates with little chance of heavy frost growing on sandy-loam soils. They should be pruned after flowering to maintain height/spread and improve the shape of the plant. Removing spent cones will also improve flower displays.

Pests and diseases are insignificant. However iron deficiency leads to yellowing of new growth which results in reduced vigour. This can be treated with iron chelates or iron sulphate at the manufacturer's recommended rates.



The magnificent flower spike of the Giant Candles Banksia

#### **Where can they be seen?**

Magnificent specimens of this plant can be found growing in the front garden displays of the Centennial Parklands office.

## Introducing the Parade Grounds Café

The new licensee of Centennial Parklands Restaurant, Trippas White Catering, has commenced operation in the temporary Parade Grounds Café, located adjacent to the to-be-refurbished restaurant and next to the children's playground.

The stylish white marquee offers both indoor and outdoor seating. Prices are similar to those previously available but the award-winning new caterer offers some special attractions including organic coffee, kids lunch packs, gourmet breakfast options and exotic lunch wraps.

*Friends of Centennial Parklands* still receive a 10% discount off all purchases from the Café, plus a 10% discount at any other Trippas White venue (see page 11 for more information).

Murals on the hoarding panels around the playground that secure the restaurant site were painted by Ranger and artist Paul Soloman. Paul recruited a number of fellow artists, including some participants from the Art for Adults program, for the project. The spectacular murals feature Park landscapes including the Duck Pond and Lachlan Swamp and cover two massive sections of hoarding — a total of nearly 40 metres of painting.

So come down to the new Parade Grounds Café. Taste test the new coffee. Check out the new landscapes. It's only temporary so enjoy it while it lasts!



The temporary Parade Grounds Café marquee



## New trees shooting upwards



Kauri Pines when first planted



Kauri Pines today

Planting new trees to replace the Parklands ageing tree population is vital. However, newly planted trees need to be carefully nurtured to ensure they survive in an urban environment. The *Agathis robusta* (Kauri Pines) planting in 2000 is a wonderful example of successful nurturing.

The Kauri Pines were planted along the Avenue of Nations to commemorate the Centenary of Federation. It was envisaged that they would help recreate the thoroughfare's famous colonnade effect, replacing the venerable Canary Island Palm tree (*Phoenix*) that succumbed to the deadly *Fusarium* Wilt fungus. 'The new trees are practically leaping out of the ground,' quips Ted Hoare, Centennial Parklands Senior Arborist. 'When they were planted in 2000 they were less than two metres. Now the bigger ones are nearly three metres. We are thrilled at their performance. The trees are now shaping into a magnificent avenue and the colonnade effect is already visible.'

## Safety comes first at the Equestrian Centre

The Trust has implemented a range of safety initiatives to protect riders, visitors and horses at the Centennial Parklands Equestrian Centre. In May, a new boom gate and horse chicane were installed inside the Centre's Lang Road entrance. These were designed to slow traffic entering the Centre as well as manage any loose horses within the Centre. The chicane will also allow horses to re-enter the Centre if they accidentally get loose outside.

Other safety initiatives within the Centre include:

- A speed hump trial, part of an ongoing exploration of ways to effectively slow down traffic
- Convex mirrors on blind corners
- Improved traffic signage and sign location
- Road painting to emphasise the shared zone between horses and pedestrians plus improved lane markings
- Improved safety signage

The Trust welcomes your feedback on these safety initiatives. Please email [cpcc@cp.nsw.gov.au](mailto:cpcc@cp.nsw.gov.au) with your feedback or queries.

## 550 kilograms of carp removed from our ponds

In March 2007 the Centennial Parklands pest management team, with members of the Green Corps, commenced a two-day operation to significantly reduce European carp in the Parklands ponds. Using a combination of drag netting and electro fishing a total of 550 kilograms of this devastating pest species was removed.

Electro fishing is the most efficient way to remove large carp from the ponds. Using an electric field, all fish are temporarily immobilised, but only targeted carp are removed. Drag netting, used in this operation by the Green Corps team, was successful in herding mature carp and catching smaller carp. In the future, biological controls are planned as part of the Parklands integrated Pest Management Plan including the introduction of predatory native fish like Australian Bass.

Fewer carp will aid the pond's water quality and is considered essential to improve the ponds ecology. This means more macrophytes, frogs and native fish and an overall healthier water environment.



Carp removal in action

## Adopt a tree on National Tree Day – Sunday 29 July



Semi-advanced Sydney red gum trees in 45 litre containers will be planted on National Tree Day

Be quick, we only have 13 magnificent Sydney red gum trees available for planting on National Tree Day. This will also be the last mass planting of its type for some time. The trees will be planted on the day at the Woollahra Gates.

Adopt a Tree Packages cost \$500 (tax deductible) and includes a certificate, a GPS map showing the location of your tree, a photograph with the tree and a one year complimentary *Friends of Centennial Parklands* membership.

By adopting a tree you will support the Centennial Parklands Tree Replacement Program and create a special place in the Parklands for yourself and your loved ones.

Thanks to our generous donors the Foundation has successfully raised more than \$100,000 since July 2006 for the replacement of ageing trees. However, we have a long way to go as almost 60% of the Parklands 16,000 trees must be replaced over the next 40 years.

Please contact the Centennial Parklands Foundation on (02) 9339 6699 if you would like to help us by making a donation or adopting a tree.

## An evening in the Parklands

On Thursday 29 March the Foundation invited donors, *Friends* and neighbours of the Parklands to attend drinks at the historic Superintendent's Residence for an update on the Foundation's progress and future plans.

Sarah Whyte, Foundation Chair, spoke of the broad range of projects the Foundation is presently funding – including the Tree Replacement Program, the Green Corps project, the nursery, the revegetation of Fly Casting Pond, water saving projects and research projects.



Foundation Chair Sarah Whyte (right) with Mrs Joan Sarfaty, generous Foundation donor

## Great food at a great price for our *Friends*

The appointment of Trippas White Catering as the new licensee for the Centennial Parklands Restaurant is good news for *Friends* members. Show your *Friends* membership card and get 10% off your total bill at the Centennial Parklands temporary café, the Parade Grounds Café. The discount also applies to other Trippas White venues including the Botanic Gardens Restaurant, The Mint, the Art Gallery of NSW and the National Gallery of Australia in Canberra. Please note this does not apply to special events or functions at these venues.

## Green Corps progress

The Green Corps team has certainly been working hard over the past few months ahead of the program's conclusion in May 2007. The six month Green Corps program began in November 2006 under the guidance of Greening Australia with ten participants, aged 17-20. The team have just built a nursery that will be used to propagate Eastern Suburbs Banksia Scrub (ESBS) species and other plants associated with the Parklands.

The nursery project allowed the Green Corps team to learn a variety of skills, such as how to take cuttings of plant materials, including the challenging ESBS seed stock. By the project's completion the nursery will have around 1000-2000 ESBS species under propagation and a multitude of easily propagated non-native species. Some of this stock will be re-used in Parklands horticultural displays and some will be offered to the public in a plant sale planned for later this year to raise funds for the Centennial Parklands Foundation.

The ongoing success of the nursery will be dependent on the *Growing Friends* group of volunteers. If you are interested in being a volunteer for this important project please contact us on (02) 9339 6699.

■ Get Active ■ Participate ■ Visit your local park ■ ■ ■

Visit **[www.healthyparkshealthypeople.com](http://www.healthyparkshealthypeople.com)** for program details

Healthy Parks Healthy People is an initiative of the **Sydney Parks Group** and includes the Botanic Gardens Trust; **Centennial Parklands**; Department of Planning; **Department of Environment & Conservation - Parks & Wildlife**; Parramatta Park Trust; **Sydney Harbour Federation Trust**; and Sydney Olympic Park Authority. Supported by University of Technology, Sydney and the University of Western Sydney.

# Visitor Information

Please refer to the map insert for locations.

## HOW TO GET HERE

5 km from the Sydney CBD. Easily accessible by bus, train, car, bike or on foot.



Regular buses from Circular Quay, Central Stn, Bondi Jn Stn and surrounding suburbs. Trains to Central and Bondi Jn, both a 30-40 minute walk to the Parklands. [www.131500.info](http://www.131500.info)



Cycle lanes along Darley Rd, Alison Rd, Anzac Pde, South Dowling St, Cleveland St and Federation Way.

## CAR FREE DAY

Last Sunday of every season (February, May, August & November).



## CENTENNIAL PARK GATE TIMES

Centennial Park is accessible to vehicles between sunrise and sunset. Musgrave Ave Gates are closed permanently to cars.

### Primary Gates (Paddington, Woollahra, Randwick & Robertson Rd (entry))

March\* to April 6.00 am–6.00 pm

May to August 6.30 am–5.30 pm

September to October 6.00 am–6.00 pm

November to March \*\* 6.00 am–8.00 pm

\* After daylight saving

\*\* During daylight saving

### Secondary Gates (York Rd, Jervois Ave and Robertson Rd exit)

Weekdays 9.00 am–4.00 pm

Weekends as for Primary Gates

### Govett St Gates

Weekdays 9.00 am–Primary Gate closing time

Weekends as for Primary Gates

## FOOD OUTLETS



### Parade Grounds Café

Cnr Grand & Parkes Drive, Centennial Park (adjacent to playground). Open 7 days.

7.30 am–5.00 pm (02) 9380 9350 (temporary facility until Autumn 2008).



### Centennial Park Mobile Food Van E5

Light meals, sandwiches, cold drinks, gelato and espresso. Open weekends & public holidays, 8.00 am–sunset.



### Moore Park Golf Patio Bar B3

Overlooking the first tee, the outdoor Patio Bar

serves light food and drinks. Open 7 days,

7.30 am–4.00 pm (Mon to Wed),

7.30 am–8.00 pm (Thu to Fri), 7.30 am–6.00 pm

(Sat to Sun) (02) 9663 1064

[www.mooreparkgolf.com.au](http://www.mooreparkgolf.com.au)



### The Long Apron at Moore Park Golf B3

This bar and restaurant serves quality meals and a full variety of wine and beers. Open Wed to Sun, Noon–5.00 pm (Wed to Thu), Noon–7.00 pm (Fri to Sun) (02) 9663 1064 [www.mooreparkgolf.com.au](http://www.mooreparkgolf.com.au)

## RECREATION ACTIVITIES



### BBQs and Picnics

Unlimited picnic spots, with views of ponds, fields and gardens. Free BBQs. First-in first served basis. BYO portable BBQs with legs permitted (except during total fire bans), portable picnic equipment permitted. Bookings required for groups of 50 or more BBQs located at A3 D5 D6 E2 E3 G4 G5 H5



### Cycling and Rollerblading

3.8 km cycle/rollerblade lane on Grand Dr, Centennial Park. Cycle lanes along Darley Rd, Alison Rd, Anzac Pde, South Dowling St, Cleveland St and Federation Way. Off-road cycling circuit for children at Learners Cycleway. D5

Helmets required. Three-wheel pedal cars not permitted in Centennial Park. Four-wheel pedal cars permitted.



### Centennial Parklands Cycle Hire F3

Cnr Hamilton & Grand Drs, Centennial Park 0401 357 419



### Centennial Park Cycles G6

50 Clovelly Rd, Randwick (02) 9398 5027



### Woolys Wheels

82 Oxford St, Paddington (02) 9331 2671 [www.woolyswheels.com](http://www.woolyswheels.com)



### Wildlife Watching

Spot birds, turtles, invertebrates and possums within diverse natural environments. Ideal locations at D4 E5 F4. Please do not feed the animals.



### Playgrounds

Five playgrounds catering for a range of age groups. A2 D5 E2 E3 H5.

### Dog Walking

On and off leash dog walking areas. BYO dog tidy bags to pick up after your dog.

## SPORT AND FACILITY HIRE

Quality sports grounds and facilities for hire for casual one-off bookings or seasonal competitions. (02) 9339 6699

### ES Marks Athletics Field B5

400 m running track, floodlit field and covered stand with seating for 1000 people. Changing rooms, toilets, First Aid Room, Officials Room (with PA system) and Meeting Room. Casual public training, Tue, Wed & Thu, 3.30 pm–8.30 pm. For hire for training or carnivals. (02) 9339 6699 [www.cp.nsw.gov.au/sports](http://www.cp.nsw.gov.au/sports)

Golf, Horse Riding and Tennis hire available via licensed operators:



### Moore Park Tennis Courts B3

Tennis court hire, coaching, social competitions, racquet and ball sales and ball machine hire. Four floodlit courts. Open 7 days, 7.00 am–10.00 pm. 0412 123 456



### Parklands Sports Centre C4

Tennis court hire, coaching, school holiday camps and competitions. 11 floodlit courts. Open 7 days, 9.00 am–10.00 pm (summer & Mon to Thu in winter) 9.00 am–6.00 pm (Fri in winter) 8.00 am–6.00 pm (winter weekends) (02) 9662 7033



### Moore Park Golf B3

Par 70, 18-hole Group One Championship golf course. All weather, day-night Driving Range, Putting and Chipping Greens, Pro Shop and Golf Academy. (02) 9663 1064 [www.mooreparkgolf.com.au](http://www.mooreparkgolf.com.au)



### Horse Riding C4 D5

3.6 km horse track, 3.5 ha of fenced grounds featuring showjumping, dressage, lunging and turf hacking, Equestrian Centre with covered arenas, hot and cold wash bays and sand rolls. Riding schools offer lessons, horse hire, pony camps, pony parties, pony leads and guided park rides. Stabling available. (02) 9332 2809 [www.cpequestrian.com.au](http://www.cpequestrian.com.au)



Budapest Riding School 0419 231 391 [budapestridingschool@aapt.net.au](mailto:budapestridingschool@aapt.net.au)



Centennial Stables (02) 9360 5650 [www.centennialstables.com.au](http://www.centennialstables.com.au)



Eastside Riding Academy (02) 9360 7521 [www.eastsideriding.com.au](http://www.eastsideriding.com.au)



Moore Park Riding Stables (02) 9360 8747 [www.mooreparkstables.com.au](http://www.mooreparkstables.com.au)



Papillon Riding Stables (02) 8356 9866 or 0407 224 938 [www.papillonriding.com.au](http://www.papillonriding.com.au)

## WHAT'S ON

Ranger-guided educational excursions, children's birthday parties, guided tours and workshops, school holiday activities, vacation care programs as well as sports camps, concerts, festivals and events. (02) 9339 6699 [www.cp.nsw.gov.au/whats\\_on](http://www.cp.nsw.gov.au/whats_on)

## FILMING AND PHOTOGRAPHY

Locations available for commercial filming and photography. (02) 9339 6699 [www.cp.nsw.gov.au/venues](http://www.cp.nsw.gov.au/venues)

## EVENTS AND FUNCTIONS

Locations available for private and public functions and events. (02) 9339 6699 [www.cp.nsw.gov.au/venues](http://www.cp.nsw.gov.au/venues)

## FOUNDATION AND FRIENDS

See insert on Page 6. (02) 9339 6699 [www.cp.nsw.gov.au/foundation\\_and\\_friends](http://www.cp.nsw.gov.au/foundation_and_friends)

## CONTACT US

Centennial Parklands is managed by the Centennial Park and Moore Park Trust.



Parklands Office (behind Café), Mon to Fri, 8.30 am–5.00 pm. E3



Visitor Centre, Paddington Gates, weekends 10.00 am–3.00 pm. E2

Web: [www.cp.nsw.gov.au](http://www.cp.nsw.gov.au)

Email: [info@cp.nsw.gov.au](mailto:info@cp.nsw.gov.au)

Phone: (02) 9339 6699

Fax: (02) 9332 2148

Post: Locked Bag 15 Paddington NSW 2021

After hours emergencies: 0412 718 611



Printed on Recycled Paper  
(90% Post Consumer Waste)