


VOLUME 17 • SUMMER 2001/02

parklands

THE MAGAZINE OF CENTENNIAL PARKLANDS




CENTENNIAL
parklands
centennial park
moore park
queens park

Directions



Peter Duncan
Director,
Centennial Park and
Moore Park Trust

As the Centenary of Federation year draws to a close it is fitting to reflect on some of the wonderful celebrations which have taken place in the Parklands during the last 12 months.

On 1 January 50,000 people flocked to Centennial Park for the Federation Day ceremonies, and thousands more - an estimated 10,000 - to the official opening of the Avenue of Nations and the vibrant and atmospheric festival of diversity, ParkFest, in October.

The beautiful interpretive sculpture, *Hand Upon Hand*, specially designed to officially dedicate The Avenue, was also unveiled in October. Celebrating the unity and diversity of cultural backgrounds in Australia, the piece has already attracted a huge amount of positive attention from adults and children alike, realising the aim of designer Gillian Smart to create a vehicle for communication and connection.

Speaking of creative work, a range of site-specific installations by some of Australia's leading young

artists can be seen in the northern section of the Park until early December. Artful Park aims to draw visitors through the Park into areas they might never have visited.

Early December also sees the opening of Federation Place. This completes the ceremonial and symbolic entrance linking Moore Park and Centennial Park and leaves a lasting tribute to the Parklands' role in the Federation of Australia during the Centenary of Federation year.

Also in December we welcome back Big, Bold and Brassy, starring James Morrison and regular Park-user, Marcia Hines.

Summer sees the return of the popular Moonlight Cinema in its glorious outdoor setting, and the fresh and inventive Circus Oz which will, once again, no doubt, delight its audience with incredible human antics.

On the planning front the Trust has reviewed hundreds of submissions from the public on both the Draft

Transport Access and Parking Plan and Moore Park South Master Plan, and highlights of the outcomes of these plans can be read in this issue of Parklands.

The Trust recently hosted an Open Day and public presentation to launch the first consultation phase of its Conservation Plan.

The Plan will assist in the long-term conservation of the Parklands by identifying heritage issues and assessing the natural, Aboriginal, archaeological, cultural, recreational and social significance of the Parklands.

The Trust is pleased to announce the implementation of the first of six possible volunteer programs with 15 volunteers helping to staff the newly opened Superintendent's Residence.

On behalf of the Trust I hope you enjoy the Parklands and planned events during the Summer period and throughout 2002. Best wishes for the festive season ■

Contents

Parklands Magazine is published quarterly by the Centennial Park & Moore Park Trust - Locked Bag 15, Paddington NSW 2021.

Trustees: Annette O'Neill (Chairman), Phillip Black, Jill Hickson, David Leckie, Michael Marx AM, John Walker, Sarah Whyte, Bob Wilson.

Editor: Kerry Wren

email: kerry.wren@cp.nsw.gov.au

Contributors: Diana Prichard, Nichola Clark

Design: Imagepoint Creative Solutions

Photography: Ian Lever, Jeff Ambler, Ponch Hawkes, Julie Pryor

Printed on recycled paper

Cover: The ornate fencing around Centennial Parklands' Reservoir was recently restored by Sydney Water.

3 Parkbench

4 Reservoir art Celebration of jazz, swing and champagne

5 Volunteers staff historic house

6 Theatrics under the big top It must have been the moonlight...



7 Artists exhibit in outdoor gallery History unfolds at Federation Place

8 Managing the Parklands heritage The wrong sort of rubbish

9 Consultation update



10 Festivities in the Park

12 Friends of the Parklands

13 Drawn to Nature Marathoners in the Park

14 Summer Events Calendar

16 Centennial Parklands User's Guide



Parkbench

NEW GATEWAY TO PARK

December 9 sees the opening of Federation Place, an exciting project to celebrate and mark the Centenary of Federation. Design architect Alec Tzannes has created a spectacular ceremonial gateway into Centennial Park, which also provides a link to Moore Park. The project also includes the opening of Federation Way and reflects the contemporary culture of the park and the surrounding avenue of trees. See page 7 for full story.

CONSERVATION PLAN UPDATE

The development of Centennial Parklands Conservation Plan has generated much interest from the public with more than 200 people attending an Open Day and public presentation in October.

These consultations resulted in valuable feedback from the public. See page 8 for full story.

For those wanting further information on the Plan the draft Significance Assessment and Elements of Significance documents are available for public review at Centennial Parklands' Administration Building reception, open daily from 8.30am to 5pm (excluding weekends). They can also be viewed at the Superintendent's Residence on Wednesdays and weekends from 10am to 3pm or by visiting Centennial Parklands website, www.cp.nsw.gov.au.

AN ARTFUL PARK

Until December 9, Centennial Parklands is an exhibition ground for the artwork of some of Australia's most talented and creative contemporary artists. Following its huge success six years ago, Artful Park has been resurrected as part of the Centenary of Federation celebrations. Centennial Parklands has joined forces with the Museum of Contemporary Art (MCA) to produce an exhibition that is challenging and diverse, within the unique backdrop of the park.

As part of event, the Parklands is hosting a range of activities including guided tours, drawing workshops and an exciting education program for students along with the Bella program offering activities for students with special needs. Artful Park only runs for 10 days until 9 December so make sure you don't miss it.

TOP OF THE BIG TOPS

Moore Park is heating up again this Summer with the anticipated arrival of Circus Oz. It's been two years since the Circus Oz troupe thrilled audiences with its spellbinding antics on the circus site at Moore Park. From 2 January – 3 February they're back to take Sydney by storm. We will see daring acts that will make you sweat in your seat, comedy that will make your sides split and energy that will have you gasping. See page 6 for full story.

ABC CELEBRATES 100 YEARS OF RADIO IN CENTENNIAL PARK

On 12 December 1901 Guglielmo Marconi transmitted the first radio signal across the Atlantic Ocean, proving that radio waves could travel great distances across the curvature of the earth and heralding the age of radio.

From dawn until dusk on Wednesday, 12 December, 702 ABC Sydney will be broadcasting live from Centennial Park's Federation Valley. If you've ever wondered what the 702 presenters look like, here's your chance!

Come down for Breakfast with Angela Catterns, Mornings with Sally Loane, Afternoons with James Valentine and Drive with Ian Rogerson.

Bring your picnics, your radio memorabilia, your kites and join 702 for Junior Broadcasting, a kite-making, kite-flying and kite-decorating workshop, appearances by Spot the Dog, a radio-memorabilia competition, displays on the history of radio, quizzes, a live radio play (with audience members playing the part of actors or sound effects specialists), prizes, free tattoos and much more!

For further information phone 702 on (02) 9333 1234.

PARK LIFE SAVINGS

With the extra hours of sunlight, Centennial Parklands becomes a hive of activity at this time of year. Cyclists, runners, riders and rollerbladers are hard at work in the evenings, taking advantage of the later closing time at 8pm. The wildlife during the summer months is vibrant, both the micro and macro bats make their presence more known, and the turtles are out and about for park users to view.

With picturesque sunsets and orange-lit evenings, Centennial Parklands is stunning and tranquil. Make sure you take advantage of this beautiful environment of the park this Summer.

SUBLIME SUNSET DINING

Fancy winning and dining in the Park at sunset. For the first time ever, Centennial Parklands Restaurant is now opening its doors for dinner every Wednesday – Saturday evening from 6pm. This means light evenings and sunsets can be fully enjoyed in the Park with the luxury of a fine glass of wine in the hand and a freshly prepared dish.

Whether it be dinner for two, a bite to eat before "Moonlight Cinema", or a family meal where the children can play on the swings, the restaurant has designed a creative evening menu to suit all palates.

For information and bookings, phone Centennial Parklands Restaurant on 9360 3355 ■



Reservoir art



The newly restored ornate fencing around the Centennial Park's Reservoir.

Standing on the high ground between Carrington Drive and Oxford Street, the views unfold for miles across Sydney. The park stretches neatly in front of you, Oxford Street bustles along as always, and the towers of the city reach up purposefully in the distance. It is remarkable to think that a large

part of the city in this view, relies on water from a cavernous world of water beneath your feet.

Centennial Park has three main reservoirs on its grounds, the first built was the Woollahra Reservoir, c1878, at Woollahra Gates. Two larger reservoirs were built at a later date in between Carrington Drive and Oxford Street;

Centennial Park Reservoir No.1, c1895, and Centennial Park Reservoir No.2, c1925. All with heritage significance, Sydney Water maintains the three reservoirs, and as part of a longer-term project to improve the aesthetics of the area, the original fencing of 1895, around Centennial Park Reservoir No.1 has recently been renovated.

Mr C W Darley, Engineer-In-Chief of the Public Works Department (brother of Sir Frederick Darley who administered the oath at the 1901 Federation Ceremonies), was responsible for the development of the extensive Reservoir No.1. At seven metres deep, it stands as one of the last reservoirs to be built without reinforced concrete. Its design features brick walls and arched ceilings supported by columns connected with supporting steel rods. On the exterior, dramatic cast iron fencing

circles the reservoir and an original stone stairway lies on the south side.

Jon Breen, historian for Sydney Water, explains the most recent project; "Centennial Park Reservoir No.1 has the most ornate fencing around it. Along with heritage architects and metalurgists, we carried out a paint scraping to discover its initial colour. The result was a deep green colour, so the colour we see today was found to be the most fitting for the period of the fencing."

Since its opening in 1895 until about 1920, the fencing also enclosed a Central Pavilion. The reservoir initially formed the platform for four tennis courts and the central pavilion designed by the Sydney architect Howard Jursland. The pavilion was later re-erected at Lane Cove National Park."

As well as the rich history of Centennial Park Reservoir No.1 and its two counterparts, the reservoirs, still play the vital role in supplying water to the higher parts of the Eastern Suburbs ■

Celebration of jazz, swing and champagne

Fresh from a European tour, jazz-trumpeter extraordinaire, James Morrison is returning to Centennial Park with his big band to star with the inimitable Marcia Hines in a tribute to Louis Armstrong in the centenary of his birth. "We'll play hits of Louis' like *Jeepers Creepers*; *Sleepy Time Down South*; *All Of Me* and *Up a Lazy River*," says James. "We'll also feature the legendary big band leader Ed Wilson from the Daly-Wilson Big Band - this was the band that Marcia sang with in the beginning of her career!"

The band comprises an impressive array of brass - no less than five saxophones, four trombones and four trumpets - as well as piano, double bass, guitar and drums.

James says he's excited to be performing with Marcia. "We've worked together many

times over the years. She's a great performer and wonderful to work with," he says. And Marcia returns the compliment, calling James "a national treasure!" "It's always a pleasure working with a professional like him," she elaborates.

Both artists are thrilled to be performing in Centennial Park. "I can walk from home!" quips Marcia, who lives nearby and when in Sydney is a daily park user. "Rollerblading, walking the dogs,



things like that," she says. James says he enjoys the Park-atmosphere of a show. "It's very informal and relaxed. Everyone comes along to have a picnic, listen to good music and have a great time," he says.

Big, Bold & Brassy presents *The Wonderful World of Louis Armstrong* at the Parade Ground on Saturday, December 8 from 7.30pm to around 9.30pm. Gates open at 5pm.

Up to 10,000 people are expected to attend the concert which will still proceed in inclement weather. Light refreshments and alcohol will be available but seating is unreserved, picnic-style, so bring your own refreshments, food and rug or chair.

Tickets, available through Ticketek (02) 9266 4868, range in price from \$19 to \$45 plus booking fees. For further information please call 1800 675 875 ■

In a tribute to the great Louis Armstrong, James Morrison is returning to Centennial Park with his big band to star with the inimitable Marcia Hines.

Volunteers staff historic house



Centennial Parklands' enthusiastic volunteers; top row from left, June Murphy, Bella Wedderburn, Lara Mottee, Judith Thompson (customer service officer at Centennial Parklands), Elizabeth White, Roslyn Elwing, Patricia Meagher and Sheila Helprin; bottom row from left, Allan Kauter, Robert Hart-Jones, Peter Reid and Sam Helprin.

Centennial Parklands has wanted to introduce a volunteer program for some time. The impetus to do so finally came after 2001 was designated "International Year of the Volunteer."

Program coordinator, Ranger Rachel Ely, says the first of six possible projects has recently been implemented with 15 people recruited to assist staff in providing visitor information at the historic Superintendent's Residence.

The Heritage-listed building which has been home to superintendents and rangers, opened to the public at the end of September as an exhibition space and general information centre.

Rachel says volunteers were sourced from more than 100 respondents to a June survey which asked Friends and regular participants in park activities to nominate projects they'd like to be involved in, whether it be visitor information, fauna, park care, heritage library, litter patrols or volunteer coordination.

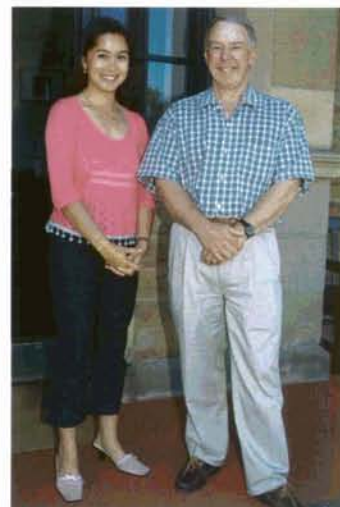
The new recruits underwent a day's training which included orientation and talks on park

procedures, policies, and most often-asked questions (where are the barbecues and toilets?!). "The role is a customer service one with the volunteers providing a friendly face as people come into the Residence wanting to find out more about the park," says Rachel. "They'll also do some visitor research."

Widely ranging in age and occupation, the volunteers all have at least one thing in common - a passion for Centennial Parklands. "They wanted to be affiliated with the park in some way," says Rachel, "and give something back to a place which has provided them with so much enjoyment." Peter Reid, a 53-year-old lawyer, says he has lived near the park all his life and has used it extensively. After witnessing the stellar performance of the 50,000 Sydney Olympic volunteers in 2000 he was inspired to do voluntary work, and the park seemed an appropriate place to offer his services. Like Peter, volunteer Bella Wedderburn, a 35-year-old mother, grew up in the area and says she has visited the park ever since she can remember. "I used to come with my grandparents for

picnics every weekend, then later I'd meet my husband after work and we'd go for a walk, and now we've got kids and it suits our purposes as a family," she says. Once her children started school Bella says she had time to "contribute something" to the park, and with her secretarial background thought visitor information was the most suitable choice of project.

The Superintendent's Residence, adjacent to the Paddington Gates, is open Wednesdays and weekends. It currently houses the *Portrait of a Park* exhibition ■



Volunteers Bella Wedderburn and Peter Reid have helped staff the Superintendent's Residence since it opened in late September.



Free Radicals in the park

Centennial Park's Amphitheatre came to life in November with the vibrant dance and percussive rhythms of Sydney Dance Company's Free Radicals.

A dynamic collaboration between choreographer Graeme Murphy and composer Michael Askill. SDC's 16 dancers were joined on stage by three exuberant percussionists in an energetic fusion of music and dance.

Held in the beautiful amphitheatre overlooking Federation Valley, the venue was perfect for the 5000 plus dance enthusiasts who turned out for the exhilarating performance under the stars.

Sydney Dance Company in the Park, which ran over three nights, was part of the Parkland's Centenary of Federation celebrations ■

Sydney Dance Company's Free Radicals performed under the stars in Centennial Park recently.



Theatrics under the big top

After an absence of two years, Circus Oz is soaring back into Centennial Parklands to take our breath away once again. This summer from 2 January to 3 February Circus Oz will erect its massive big top at Moore Park for a thrilling, action-packed season.

Mike Finch, Artistic Director of Circus Oz says the troupe is looking forward to its Summer season in Sydney.

"Last time we were in Sydney it was our 21st birthday. This time around, we have got a brand new tent to christen, it is going to be like a giant tent warming party. The whole company is so excited, every time we come to Sydney there seems to be a reason to celebrate."

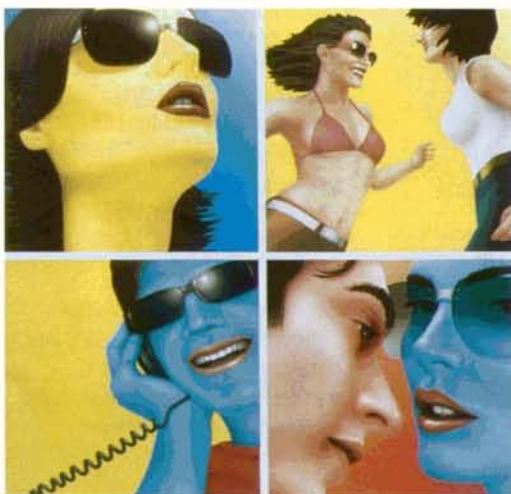
On this tour, you can expect to meet some new truly weird and wonderful characters. Try 'Flee', the trapeze artist whose high-speed swinging is famous for bringing out the goose bumps in spectators. Anni Davey, aerial artist, puts her hair products to the ultimate test by hanging a television from her locks. Circus Oz also introduces Darryl John the "idiot strong man", his might allows the cast to walk over his head, and his incredible biceps can hold up three people at a time.

Tickets can be purchased from Ticketek on (02) 9266 4800. Adults \$45, children \$22. Family, group and concession prices are available. Friends discounts apply, but bookings have to be made through Centennial Parklands ■

The thrill and vibrancy of Circus Oz is coming to Moore Park this summer. Photo: Pouch Hawkes



It must have been the moonlight...



years, classics such as *Breakfast at Tiffany's*," adds James, "and others which will work well in the environment like *Crouching Tiger Hidden Dragon* and *2001 Space Odyssey* as well as *Moulin Rouge* - not only does that film have

great visuals but the sound will work well outside."

Screening from November 23 to February 23, recent hits include *Memento*, *Bridget Jones's Diary*, *Blow*, *Best in Show* and classics such as *Casablanca*, *The Party*, *Clockwork Orange* and *Enter the Dragon*.

But Moonlight isn't just about cinema. It's about music and magazines too. Two recent launches included a second CD of chilled-out electronic music,

Moonlight Recordings Volume 2.

"Our approach was similar to the cinema," says James, "we put music on the CD we like - from the ambience of international artists Nitin Sawney and the superb Groove Armada to the sublime beats of Manchester's finest, Rae & Christian."

Also recently launched was a funky pocket-sized free magazine, a guide to 'what's on' this summer. Distributed in cafes, bars, shops and hotels, Moonlight Magazine explores the latest in fashion, people, summer reading and satire.

And fast realising its charter to deliver the best in summer entertainment, Moonlight has announced an all-weather daytime music event, Moonlight Sounds, at Centennial Square on Saturday, March 23rd. For more information visit www.moonlight.com.au ■

Artists exhibit in outdoor gallery

Centennial Parklands has joined forces with Sydney art institution, the Museum of Contemporary Art (MCA), to bring Artful Park to the Parklands.

Until Sunday, December 9, the dynamic work of contemporary Australian artists can be seen installed in the northern section of the Park.

Artists invited to exhibit in Artful Park have been drawn from past MCA exhibitions including previous Primavera: The Belinda Jackson Exhibition of Young Artists, held annually at the MCA. A selection of finalists from the Helen Lempriere National

Sculpture Award are also exhibiting their work.

MCA project manager Gillian Simon says the diverse range of artworks will have a "subtle influence" in the outdoor location. "They will draw people through the Park, into areas they might not have previously experienced," she says.

Free guided tours and workshops for adults and children will be available. See calendar for details.

As part of the Centenary of Federation celebrations, the event was made possible by the Commonwealth Government's Federation Fund grant ■

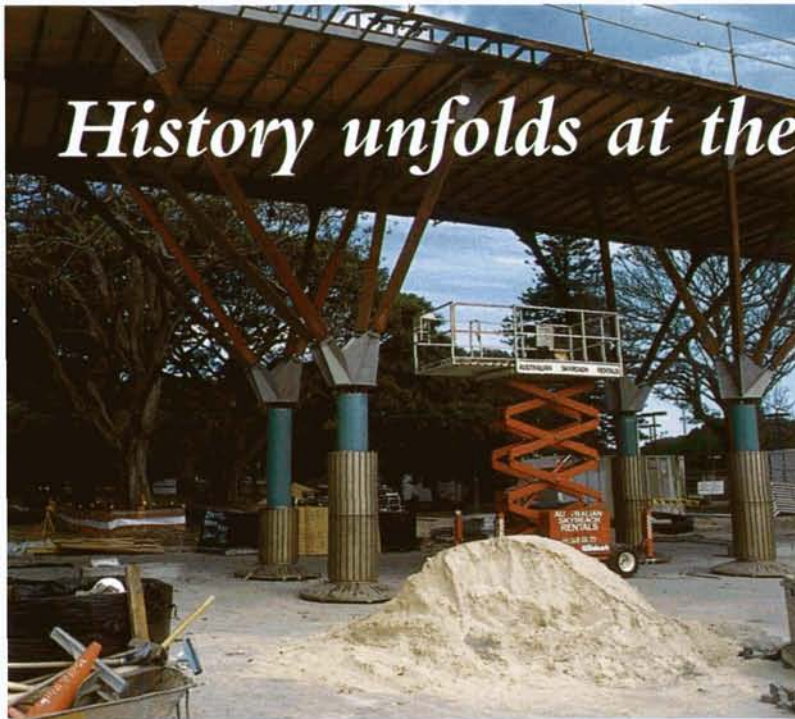
A glimpse at the artists

Artists exhibiting in Artful Park, an outdoor exhibition brought to the Parklands by the Trust and Museum of Contemporary Art include: Clinton Nain, Mikala Dwyer, Elizabeth Pulie, David Rosetzky, Rodney Spooner, Stephen Birch, Victoria Lobregat, David Sequeira, James Angus, Charles Robb and Dani Marti.



Dani Marti's "Blue Angels" is inspired by virtual reality and artificial life experiments of our computer culture. Photo: Julie Pryor

History unfolds at the new Federation Place



Federation Place, under construction since July, finally opens on 9 December.

Centennial Parklands has a new Place. It's called Federation Place and the Trust invites you to celebrate its official opening on Sunday, 9 December.

Many exciting activities are planned for the opening which will kick off with a live performance by

pop icon Christine Anu. Street entertainment, a community sausage sizzle, face-painting for kids, ceremonial flag-raising, a special Centenary of Federation and Centennial Parklands exhibition and more are among some of the other events planned for the day.

The event marks the completion of the Parklands' magnificent formal entryway, originally proposed in 1887 to integrate Centennial Park, Moore Park and Queens Park.

The community is invited to be part of this historic Centenary of Federation event and witness the unveiling of Federation Gate, a new Sydney architectural masterpiece.

Peter Nowland, Landscape Architect at Centennial Parklands said the opening of Federation Place was an important time in the history of Centennial Parklands.

"The remaking of the Federation Drive will reinforce the symbolic integration of the three parks, which were unified as Centennial Parklands in 1991," he said.

"The contemporary gateway will provide a striking visual marker for the revitalised Centennial Parklands and still maintain the original character of the Drive."

Design architect Alec Tzannes, who designed Federation Pavilion,

has designed a gateway structure to the park that reflects the avenue of towering fig trees and symbolically marks the celebration of Federation.

"It features a strong sense of arrival surrounded by a paved area of seating and flagpoles leading into a reconfigured ceremonial way," continued Mr Nowland.

"Set as a domain for cyclists and pedestrians, the Drive won't be accessible to vehicles, except on exceptional occasions of significance.

"The Drive will leave a lasting tribute to the Parklands' role in the Federation of Australia during the Centenary year and we are all looking forward to its opening at the beginning of December."

Federation Place is located on the corner of Lang Road and Anzac Parade ■

Managing the Parklands' heritage

The development of Centennial Parklands' Conservation Plan has generated significant public interest in recent months.

A successful Open Day and public presentation hosted by the Trust in October were attended by more than 200 people. These consultations resulted in the valuable feedback that the Conservation Plan's role was not fully understood by the public and steps are now being made to rectify this.

Project coordinator Nicola Bryden says the Trust has recognised the need to better communicate the steps involved in developing the Conservation Plan and explaining the role it will play in the management of the Parklands.

"It is clear from the feedback so far that people want equal weight to be placed on natural, Indigenous, social and recreational values as well as the cultural

landscape and the built environment," she says.

Trust director, Peter Duncan says he was impressed by the passion and interest shown for the Parklands at the Open Day and presentation, and encourages the public to provide input into the draft Assessment of Significance.

"The Trust wishes to actively engage the public in the conservation planning process which will underpin the ongoing conservation of the Parklands," he says.

The Draft Assessment of Significance, a report that assesses the significance of the Park's heritage, is available for public comment on the Trust's web site and at the administration office. Conservation Plan information is also on display at the Superintendent's Residence, located adjacent to Paddington Gates. Open Wednesdays and weekends 10am-3pm.



Valuable feedback from the community helps the Trust better maintain the parklands.

Heritage consultant, Conybeare Morrison & Partners is preparing the Plan and working with a Steering Committee comprising experts and Trust staff, and in consultation with Indigenous communities and the public.

The Community Consultative Committee is also represented on the Steering Committee, and will assist with the analysis of public comments on the Draft Assessment of Significance.

The draft Plan will be available for public comment in early 2002, and after analysis of comments, finalised in mid-2002.

For further information please contact Centennial Parklands at Locked Bag 15, Paddington, NSW, 2021, phone (02) 9339 6699, email: info@cp.nsw.gov.au or visit the web site www.cp.nsw.gov.au ■



Waste audits in the Parklands recently showed a dramatic improvement in the usage of recycling bins.

A swag of 'adult' magazines; barrow loads of plaster dust and mountains of commercial waste are just some of the unwanted rubbish items found in Centennial Parklands bins.

Ranger Brian Page says three waste audits have been conducted in the Parklands since November 2000 to monitor the introduction of the co-mingled recycling service in mid-2001, and have had some surprising results.

"We've had one bin location where there was an excessive amount of dumped commercial waste from local businesses. We were able to identify who was responsible and will take appropriate action," he says.

Less easily traced are the consistent 'dumpers' of large quantities of 'adult' magazines at another location. "All three audits have indicated there has been a large amount of these magazines

The wrong sort of rubbish

dumped into the bins," says Brian.

And who has been using the Parklands as the local tip?

"A huge volume of plaster dust, most likely from local renovations, was more prevalent in the last audit," says Brian. "Randwick Council won't take bins filled with this sort of material anymore, so it's been dumped in the Parklands bins," he continues.

Ways to stop this kind of dumping are currently being discussed.

The audits were conducted on 22 of the 38 waste stations by Resource NSW in November 2000; immediately after the introduction of the co-mingled recycling system in June 2001, and in September 2001 to study the system in warmer, high-park usage months.

The co-mingled system involves all recyclable materials being

placed in a single 'recycling' bin and all other rubbish going into a separate 'garbage' bin.

Audit results show a dramatic improvement in the usage of the recycling bins from the first to last audit and the recovery rate of most recyclable material.

The volume of contamination decreased between the first audit and the final audit, however contamination was still 47 per cent by weight. In all three studies paper and cardboard were major contributors to the contamination of recyclables.

The study will be used to assist in the ongoing education program in the Parklands to reduce the contamination levels in the co-mingled recycling service ■

Consultation update - Draft Transport Access & Parking Plan & Moore Park South Plan

From November 2000 to September 2001, the Centennial Park & Moore Park Trust carried out a major consultation process with the general public on the Draft Transport, Access & Parking Plan and Moore Park South Master Plan.

The Draft Transport, Access & Parking Plan was developed to enable better management of the competing transport needs in and around Centennial Parklands.

The Moore Park South Master Plan which takes in the Moore Park Golf Course, ES Marks Athletics Field, the historic Toll House, Mount Steel and the Bat and Ball area, was aimed at improving the facilities in the precinct, and proposed ways of opening the area up to a broader diversity of uses.

The two plans were placed on public exhibition from 2 July to 30 July with submissions accepted until 31 August.

"The consultation process for each Plan generated hundreds of responses from the public with many key issues raised," said Peter Duncan, Trust director.

DRAFT TRANSPORT, ACCESS & PARKING PLAN

Mr Duncan said the input from the consultation process had been invaluable and helped the Trust better understand the needs of the various Park user group and their issues of concern.

"The process also illustrated the conflict demands that exist amongst various user groups," he said. "But the Trust is endeavouring to coordinate the different activities and minimise conflict, while maintaining and where practicable, enhancing transport efficiency to and within the Parklands."

Key issues raised through public submissions;

- The proposed contra-flow design of Grand Drive

- The effect that the proposed pedestrian crossings will have on the viability of Centennial Park as a venue for training cyclists
- The proposed parallel parking on Grand Drive will present an unsafe situation for training cyclists
- Charges for parking
- The need for detail of what is proposed for users of the jogging track
- "Why change anything when the status quo is fine?"
- The future of on-grass car parking at Moore Park
- Disabled and elderly access

The project team is currently examining the issues raised and developing responses to each issue.

"In some cases, issues raised will result in changes to the concepts in the Draft Plan," said Mr Duncan.

"One such change will be that of the contra-flow cycle/skate lane. The contra-flow scheme was suggested to improve sight lines between cyclists/skaters and drivers in the proposed

reconfiguration of Grand Drive. However, it was recognised that the public had a number of concerns regarding the contra-flow arrangements and it has been proposed to proceed with the new Grand Drive layout without the contra-flow lane."

These among other issues will be considered in the development of the final Transport, Access & Parking Plan for consideration and recommendation by the Trust.

MOORE PARK SOUTH MASTER PLAN

Key issues raised through public submissions to this plan included;

- Concern about possible loss of open space and public use
- Retention of the Golf Course
- Concerns about the commercialisation of parkland
- The need to update existing aging facilities
- Eliminating on-grass car parking
- Need for open space due to Urban Consolidation
- ES Marks area

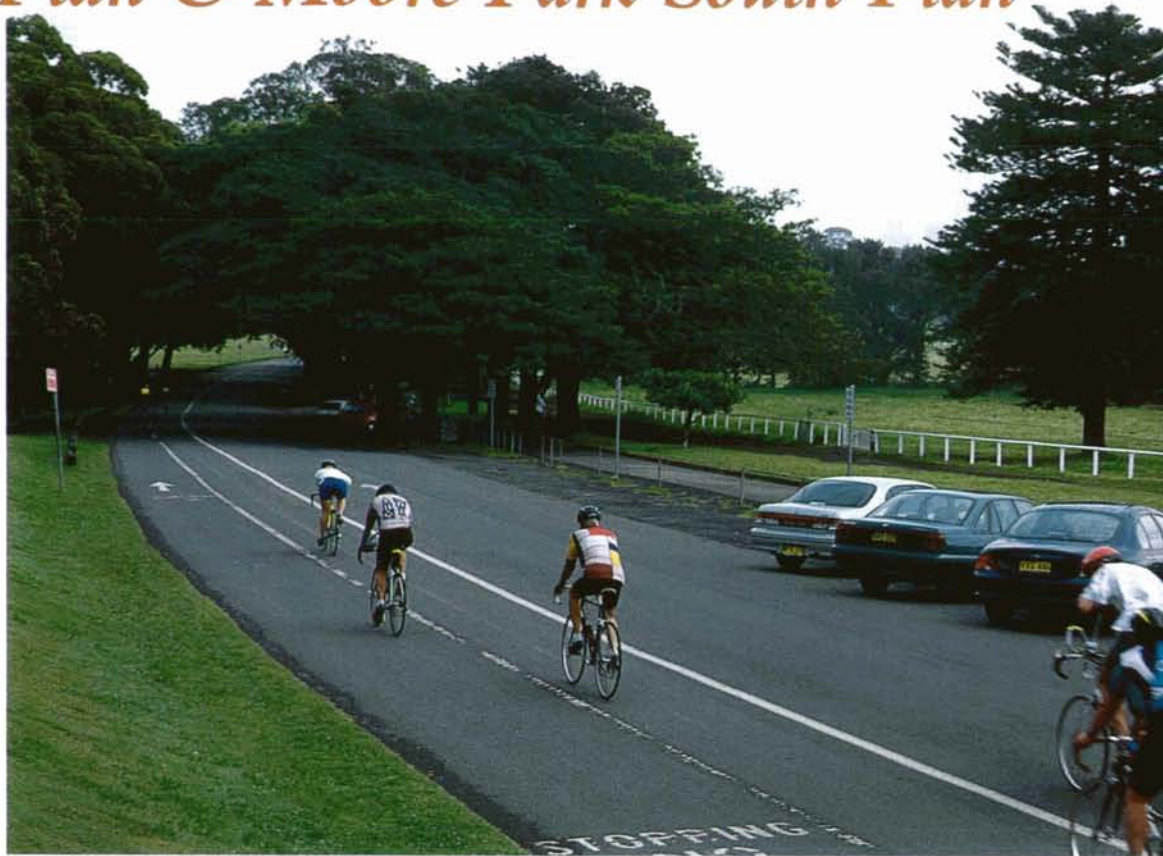
WHAT ARE THE NEXT STEPS?

The Trust is examining each issue raised and is developing responses to each issue.

"The Trust is committed to examining all of the issues and justifying decisions made about each issue" said Mr Duncan.

The final Moore Park South Master Plan is also being developed for consideration and recommendation by the Trust. If accepted by the Trust, the Plans will then be forwarded to the Government for approval. Following approval, the Centennial Parklands Plan of Management will be amended to incorporate the measures contained in the Plans. The final Plans will then be displayed for public information by January 2002.

The Trust would like to thank all those who have made submissions on the Draft Plan. We thank you for your input ■



ParkFest

Festivities in the Park

ParkFest brought out the zany, the extrovert and the fun in all sorts of characters.

▼ Throughout the day, children were eager to learn the talents and tricks of soccer at the Soccer Clinics.



Sunday, 14 October, 2001 marked a special date in the history of Centennial Parklands. It was the opening of the Avenue of Nations, officially dedicated as a lasting tribute to the many nationalities that make up Australian society. To celebrate the occasion, Centennial Park hosted ParkFest, an exciting festival of fun, food, song and dance celebrating cultural diversity which attracted some 15,000 Sydneysiders.

local ethnic community leaders and hundreds of Sydneysiders enjoying the festivities in the Park on the day.

One of the day's highlights was the unveiling of *Hand Upon Hand*, an interpretive sculpture, and poem by Australian poet Adam Aitken reflecting the message of the Avenue of Nations, "one nation from diverse backgrounds."

Gillian Smart, landscape architect of Centennial Parklands and designer of the sculpture, developed the piece as a vehicle of communication, a connection, between cultures. The interactive and tactile work has already drawn many curious visitors keen to touch and experience the smooth shells of the work ■

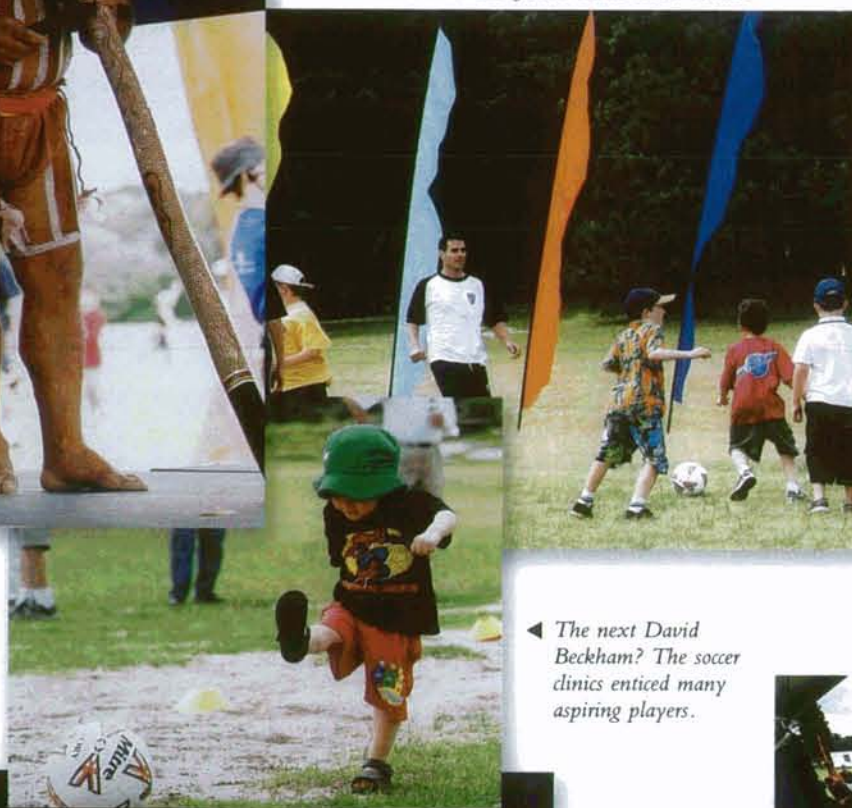
The Hon Joe Hockey, Federal Minister for Financial Services and Regulation, officially opened the Avenue of Nations before an audience of several hundred including Consuls and diplomats from Egypt, Nigeria, the Netherlands, among other nations,

▲ Federal Minister for Financial Services and Regulation, Hon. Joe Hockey, Director of Centennial Parklands, Peter Duncan, and Trustee, Michael Marx AM, unveil the Avenue of Nations.

▼ On the East Stage, the crowd gets down to the African rhythms and dance.



▲ The next David Beckham? The soccer clinics enticed many aspiring players.



▲ Indigenous performers demonstrate the enchanting tones of the didgeridoo.



▲ Beautiful and colourful dancing from different cultures around the world added to the spirit of ParkFest.

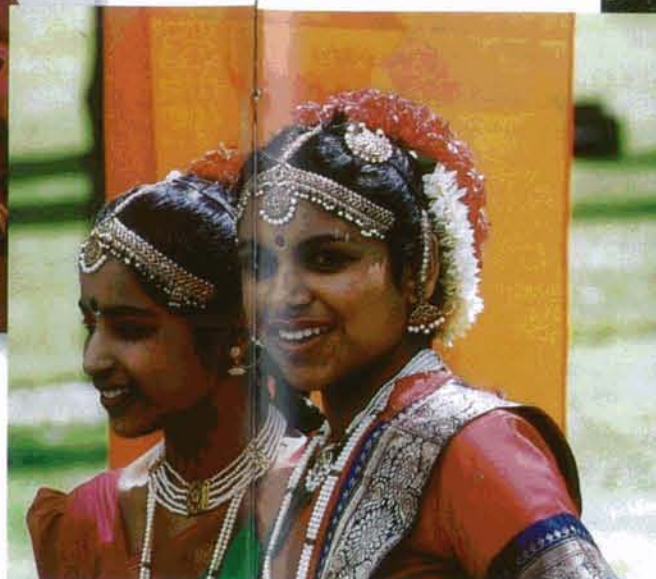
▼ Roaming percussionists from Brazil put everybody in the ParkFest party mood.



▲ Children enjoyed celebrating the music and dance of their cultures.



Exquisite, traditional costumes, of a jewel-like quality, were adorned by performers.



The Hon. Joe Hockey with the Centenary of Federation Youth Envoys admire the interpretive piece.



▲ Gillian Smart, Centennial Parklands landscape architect and sculpture designer and poet Adam Aitken, explore some of the sculpture's features.



▲ Members of the public enjoy the intricacies and tactile experience of 'Hand upon Hand' for the first time.



Friends of the Parklands

FRIENDS - APPLICATION FORM

If you love Centennial Parklands, strengthen that relationship by becoming a *Friend*. Join *Friends* and contribute to the preservation of the precious Parklands of Centennial, Moore and Queens Parks. It's a practical way of making a difference. *Friends of Centennial Parklands* enjoy the benefit of being closely associated with Sydney's favourite Parklands as well as:

- 10% discount at Centennial Parklands Restaurant and Café
- Discounted Ranger-led activities, horticultural workshops and other events
- Discounts on selected Centennial Parklands concerts and events
- Quality keyring and membership certificate
- *Parklands* magazine posted four times a year
- Exclusive *Friends* events including the annual Christmas party.

Plus you will be helping to support the future of Sydney's grandest 19th century public park, dedicated to the people by Sir Henry Parkes in 1888.

Membership Category

☐ Single (1 year) --- \$55 (inc. GST)

☐ Family (1 year) --- \$99 (inc. GST)

Name: Mrs/Ms/Miss/Mr/Dr _____

Address: _____

Postcode: _____

Telephone: home _____
business _____

Email: _____

Payment of \$ _____ is enclosed
(cheques payable to Centennial Park & Moore Park Trust)
OR

Please charge \$ _____
to my ☐ Bankcard ☐ Mastercard ☐ Visa

Card no
□ □ □ □ □ □ □ □ □ □ □ □ □ □ □ □

Expiry date ____ / ____ / ____

Card Holder's name _____

Card Holder's signature _____

Send to: *Friends of Centennial Parklands*
Locked Bag 15
PADDINGTON NSW 2021
Phone: (02) 9339 6699
Fax: (02) 9332 2148

GET BIG BOLD AND BRASSY WITH YOUR FRIENDS

Swing your hips, tap your feet and blow that air trumpet in celebration of the centenary of Louis Armstrong's birth. Big Bold and Brassy is back in the park presenting *The Wonderful World of Louis Armstrong* at The Parade Ground on Saturday, 8 December. Bring your picnic, champagne and dancing shoes, and join the jazz-trumpeter extraordinaire, James Morrison and the awesome singer Marcia Hines. James will be accompanied by Daly-Wilson Big Band.

Discounted tickets are available for Friends. Tickets are \$39 (\$6 off the usual price) from Ticketek on (02) 9266 4868 (with proof of membership card/ key-ring).

MOONLIGHT MAGIC

It is that time of year again when we can enjoy those warm long evenings. The romance of the outdoor cinema is all part of the summer and it shouldn't be missed. Moonlight Cinema kicked off in late November and will run until February 23 with an exciting program of films. You can see the tale of *Crouching Tiger, Hidden Dragon* unfold before you, cackle to *Bridget Jones's Diary*, thrill to the dynamic *Moulin Rouge*, or take in the starlit sky at the screening of *2001 Space Odyssey*. And later in the season you can be spellbound in the woods by the wizardry of *Harry Potter and the Philosopher's Stone*.

This year, Moonlight Cinema is offering a special rate of \$11 for the Friends of the Parklands. Pay at the box office on the night and remember to bring your key-ring/ membership card. For screening details telephone 1900 933 899 calls cost 50c per minute including GST. www.moonlight.com.au.

FESTIVE CELEBRATION

Christmas is just around the corner, which means not only is it time to Christmas shop, but it is time for the Friends to party! On Wednesday, 12 December, the annual Friends Christmas Party will be held from 6 - 8pm. We hope you can join us for drinks, nibbles and great fun. The event will be held at the newly opened Superintendent's Residence, adjacent to Paddington Gates. Having recently opened the Residence to the public, the Victorian building with its colourful history, will provide the perfect backdrop to the party.

The evening will be hosted by Friends patron, Lady Susie Martin and Trust Director, Peter Duncan. Park rangers will also be on hand to whisk off the little ones for some fun-packed activities.

We would like to thank you for your support as a Friend over the year and hope you can join us for the evening. Please RSVP by Friday, 7 December, phone (02) 9339 6699.

SWEETHEARTS AND FOOD LOVERS

Listen to the blue birds singing and the doves cooing on Valentines Day this year. The Centennial Parklands Restaurant is the perfect romantic venue to spend your Valentines evening. Set amongst the beautiful scenery of the Park, you can dine like a king and queen, then follow dinner with a romantic walk, hand-in-hand through the park.

A divine menu will be on offer on the evening. Dinner from 6.30pm. Two courses \$42.50 or three Courses \$47.50, with a 10% discount for Friends of Centennial Parklands on presentation of your key-ring or membership card. For bookings phone (02) 9360 3355.

THE FRIENDS OF OZ

Circus Oz is back in town this summer and the big top will be opening its doors in Moore Park from 2 January to 3 February. Friends of the Parklands can take in the thrilling show at a great discounted price. For the first Saturday night of the season (4 January at 7.30pm), Friends can purchase Adult tickets for \$25 and Child tickets for \$13 (standard rates are Adult \$45, Child \$22). Bookings must be made directly with Centennial Parklands, so please telephone (02) 9339 6699 for tickets and further information.

NEW FRIENDS

As an acknowledgment of their support, we welcome the following New Friends of Centennial Park.

Mrs Jill Anderson & Family
Dr Lydia Bennett
Mrs Fay Brown
Ms Sue Cameron
Mr James Delaney & Family
Ms Roslyn Elwing
Ms Rebecca Huntley
Ms E M Katari
Mr Allan Kauter
Mr Michael King
Ms Remonda Martinez
Mrs Helen Morrison
Mrs Lara Mottee
Ms June Murphy
Mr J.F. Pixley
Ms Judith Rawling
Ms Anna Read
Mr Peter Reid
Mr Jack Singleton
Mrs Nicole Tankard & Family
Ms Bella Wedderburn
Dr Ruth White
Mrs Elizabeth Wright
Mr Adams & Ms Hole ■

Drawn to Nature

The Escape and Explore Holiday Program for children this summer holds as many magical and creative treats as ever. Guriwal Creations discovers how the local Guriwal people used the land of Centennial Parklands. Listen to their tales of the Australian plants and animals around us, and create an artwork using aboriginal techniques.

This season will give the little people a chance to step into the boots of the rangers with Mini Rangers (2-5 yrs) and Junior Rangers (8-12 yrs). Mini rangers will make their own ranger's radio to help them through their journey of discovery in caring for the park. Surveying wildlife and a litter patrol are all part of the fun. Junior Rangers need to decorate their own patrol bag for their responsibility in patrolling the park. Monitoring the water and discovering the bio-diversity of the Parklands are just some of the tasks they will face as a ranger.

Following popular demand, wildlife expert Anthony Stimson's Australian Wildlife Show is back this season. Blossum the Possum, Petal the Bat and Precious the Snake will all be there to meet you. Children can look for the friends of Blossum and Petal in the wild Spotlight Prowl. Who knows what other creatures of the night are to found under the spotlight at Centennial Park! During the day, My Little Ponies takes children on a tour of the equestrian centre showing them where horses live, how to care for them and feed them. Their work will of course be rewarded with a short ride.

For more information, see the full calendar on p14.

A special school education program will be running to coincide with Artful Park and will led by MCA Art Educators. For further details and bookings telephone (02) 9339 6699 ■



Children will have a chance to step into the boots of rangers with Junior and Mini Rangers this summer.

Marathoners of all persuasions trace the blue line through Centennial Park during the Flora Sydney Marathon in October.

Marathoners run the Park's blue line

It was like the Olympics revisited. Some 1600 marathoners took to Sydney's blue line on 28 October to tackle the Flora Sydney Marathon.

The event also incorporated the Sunday Telegraph Bridge Run, a 10km run that attracted some 6,400 runners and wheelchair participants and finished at Fox Studios.

However, for the more masochistic (this scribe included!), our plight continued on for another 32km on route to Homebush Bay. One of the highlights of the run was tracing the blue line through the beautiful Centennial Park. A car-free morning, the peaceful park was looking its finest in the quiet stillness of the early morning.

Centennial Park provided the best vantage point for the hundreds of supporters who turned out to cheer on all the runners from the serious to the leisurely shuffler and all those in between. The Park certainly played a soothing role in preparing us for the gruelling kilometres to come along the route to Homebush.

While the Park was indeed a highlight, it didn't quite top crossing that finish line at the Sydney Athletics Stadium (some 4 hours and 25 minutes later) but it came close!

Kerry Wren

SUMMER Calendar

DECEMBER • JANUARY • FEBRUARY

• Bookings and enquiries
9339 6699
(unless otherwise stated)
• In case of rain please call to
confirm event is proceeding

DECEMBER 2001

ALL DECEMBER

MOONLIGHT CINEMA

Grab your picnic basket and rug and head to Centennial Park this summer for another great season of Moonlight Cinema. Screening every Tuesday - Sunday. For the most up to date news of Moonlight Cinema visit:
www.moonlight.com.au
Tickets. Adults \$14. Concession \$11. Child/pensioner \$9.50. Book of tickets \$95.20 available from Ticketek only. Tickets at the gate from 7:30pm or Ticketek on 9266 4800 (service fees apply). Licensed bar and gourmet catering is available.

PORTRAIT OF A PARK - SUPERINTENDENT'S RESIDENCE

A beautiful exhibition comprising a striking collection of black and white photographs by Wendy McDougall and Brendan Read. The exhibition also explores the Park's fascinating history and cultural significance. Open every Wednesday and weekends from 10am-3pm.

Until 9 December

ARTFUL PARK

Centennial Park transforms into a giant outdoor art gallery this month. The Trust has joined forces with the Museum of Contemporary to stage Artful Park, a cutting-edge exhibition featuring dynamic works by some of Australia's finest contemporary artists. Further information, phone (02) 9339 6699.

1 Saturday

ARTFUL PARK TOUR

A guided tour of the Artful Park exhibition highlighting the different installations and artists. 10-11.30am. Free of charge. Meet Mobile Ranger Station, Centennial Parklands Café. Bookings essential (02) 9339 6699.

DRAWING WORKSHOP

Adults can spend a morning in Centennial Park learning the basics of pencil sketching in this 3-hour workshop. Artful Park installations will provide the focus of this class hosted by art educators from the Museum of Contemporary Art. Bring A3 sketchpad and hat. Other materials will be provided. 10am-1pm. \$29 per person. Meet Mobile Ranger Station, Centennial Parklands Café. Bookings essential (02) 9339 6699.

2 Sunday

CAR FREE DAY

Walk, cycle or catch public transport and enjoy the first Sunday of summer in Centennial Park. Disabled access via Musgrave Avenue Gates. 9am-5pm.

ARTFUL PARK TOUR

10-11.30am See 1 December

7 Friday

SPOTLIGHT PROWL

A chance to see the wild nightlife of Centennial Park. Join Rangers spotlighting possums, flying foxes and lots of other night creatures. Bring a torch. 8.30-9.30pm. \$8.50 per person. Meet Robertson Road Gates. Bookings essential (02) 9339 6699.

8 Saturday

BIG BOLD & BRASSY

Big, Bold & Brassy presents The Wonderful World of Louis Armstrong starring jazz-trumpeter extraordinaire, James Morrison with his big band to star and the inimitable Marcia Hines in a tribute to Louis Armstrong in the centenary of his birth. Parade Ground from 7.30-9.30pm. Tickets range from \$19 to \$45 plus booking fees. Available through Ticketek (02) 9266 4868. For further information please call 1800 675 875.

ARTFUL PARK TOUR

10-11.30am See 1 December

DRAWING WORKSHOP

10am-1pm See 1 December

9 Sunday

OFFICIAL OPENING OF FEDERATION WAY

To commemorate Centenary of Federation, don't miss the official ceremonial opening of Federation Way, Federation Place and Federation Gate. Military bands, street entertainment, free sausage sizzle, historic exhibition are among some of the highlights. 11am. Cnr of Lang Road and Anzac Parade. Further information phone (02) 92339 6699.

ARTFUL PARK TOUR

10-11.30am See 1 December

11 Tuesday

THREE-DAY HORSE RIDING CAMP

For a riding experience of a lifetime, jump into the saddle and join the expedition at Centennial Stables. \$250 per camp (including light lunch). 10am-4pm. Centennial Stables. Christmas vouchers are available. Bookings: (02) 9360 5650 or www.centennialstables.com.au

TWO-DAY HORSE RIDING CAMP

Saddle up for some holiday fun at Moore Park Stables. Children five years and over will enjoy park rides, lessons, decorating ponies, and mounted games on this camp held over two days. 10am-3pm. \$180 per camp (including morning tea and lunch). Moore Park Stables. Bookings (02) 9360 8747

13 Thursday

TWO-DAY HORSE RIDING CAMP

10am-3pm See 11 December

17 Monday

TWO-DAY HORSE RIDING CAMP

10am-3pm See 11 December

18 Tuesday

MY LITTLE PONIES

A special children's tour of the Centennial Parklands Equestrian Centre. Find out where the horses live, what they eat and how to care for them. Includes a short pony ride. 10-11am. \$8 per child (2-5 years), adults free. Meet Equestrian Centre Gates, corner Lang and Cook Roads. Bookings essential (02) 9339 6699.

19 Wednesday

TWO-DAY HORSE RIDING CAMP

10am-3pm See 11 December

JANUARY 2002

ALL JANUARY

MOONLIGHT CINEMA

See All December

PORTRAIT OF A PARK

See All December

2 Wednesday

CIRCUS OZ

After an absence of two years, Circus Oz is soaring back into Centennial Parklands for a thrilling action packed season this summer. Circus Oz, a contemporary circus, is known for its dynamic, quirky, comical antics that thrills audiences of all persuasions. 2 January to 2 February. Corner of Lang Road and Anzac Parade. Tickets from Ticketek on (02) 9266 4800. Adults \$45, children \$22. Family, group and concession prices are available. Friends discounts apply, but bookings have to be made through Centennial Parklands (see p.12 for details).

ESCAPE AND EXPLORE HOLIDAY PROGRAM

8 Tuesday

GURIWAL TALES

See Centennial Park through the eyes of the local Guriwal people! Listen to the story of the Black Duck and find out how the native plants and animals found here were used for food, medicine and tools. 10-11am. \$8 per child (2-5 yrs), adults free. Meet Learners Cycleway. Bookings essential (02) 9339 6699.

PEOPLE OF THE PARK

Discover how the local Guriwal people used the land of Centennial Parklands for their food, shelter and tools. Create an artwork using Aboriginal techniques and hear the tales of the native Australian plants and animals from Guriwal culture. 2-3.30pm. \$9 per child (5-8 yrs). Meet Learners Cycleway. Bookings essential (02) 9339 6699.

SPOTLIGHT PROWL

8.45-9.45pm See 7 December

10 Thursday

MINI RANGERS

Calling all mini rangers! Listen to the Ranger's story to find out how they care for the Park. Join them to survey for wildlife, help on a litter patrol and make a ranger's radio to take home with you. 10-11am. \$8 per child (2-5 yrs), adults free. Meet Shelter Pavilion. Bookings essential (02) 9339 6699.

PARK SNAPSHOTS

Visit the old Superintendent's Residence to see snapshots of Centennial Park and how it has changed over time. Use photographic paper to capture objects found in the Park and construct a frame for your own park record. 2-3.30pm. \$9 per child (5-8 yrs). Meet Superintendent's Residence, Paddington Gates, cnr Oxford Street and Lang Road. Bookings essential (02) 9339 6699.

11 Friday

SPOTLIGHT PROWL

8.45-9.45pm See 7 December

13 Sunday

PONY RIDES

The only place where kids can jump into the saddle so close to the city! Hand-led, 10-minute rides for children. 10am-3pm. \$8.50 per ride. Meet Mobile Ranger Station, Centennial Parklands Café. Bookings not required.

14 Monday

FIVE DAY CHILDREN'S TENNIS CAMP

Learn coordination, basic skills and matchplay. Barbecue and presentation last day. Great fun. \$110 per child. 8.30am-4pm. Parklands Sport Centre. Bookings (02) 9662 7033.

15 Tuesday

MINI RANGERS

10-11am See 10 January

PARK SNAPSHOTS

2-3.30pm See 10 January

SPOTLIGHT PROWL

8.45-9.45pm See 7 December

TWO-DAY HORSE RIDING CAMP

10am-3pm See 11 December

THREE-DAY HORSE RIDING CAMP

10am-4pm daily See 11 December

TWO-DAY HORSE RIDING CAMP

10am-3pm See 11 December

16 Wednesday

JUNIOR RANGERS

Calling all Junior Rangers! Decorate your own ranger patrol bag to carry the equipment you'll need to patrol the Parklands, monitor water quality and discover the Park's biodiversity. Bring a hat, morning tea, lunch and a drink. 10am-3pm. \$33 per child (8-12 years). Meet Administration Building, behind the Centennial Parklands Café. Bookings essential (02) 9339 6699.

17 Thursday

GURIWAL TALES

10-11am See 8 January

PEOPLE OF THE PARK

2-3.30pm See 8 January

TWO-DAY HORSE RIDING CAMP

10am-3pm See 11 December

18 Friday

AUSTRALIAN WILDLIFE SHOW

Get really close to live Australian animals such as possums, bats, snakes, lizards and frogs with wildlife expert Anthony Stimson. Meet Superintendent's Residence, Paddington Gates, cnr Oxford Street and Lang Road. 10-11am. \$8 per child, adults free. Bookings essential (02) 9339 6699.

SPOTLIGHT PROWL

8.45-9.45pm See 7 December

20 Sunday

PONY RIDES

10am-3pm See 13 January

21 Monday

FIVE DAY CHILDREN'S TENNIS CAMP

8.30am-4pm See 14 January

22 Tuesday

GURIWAL TALES

10-11am See 8 January

PEOPLE OF THE PARK

2-3.30pm See 8 January

SPOTLIGHT PROWL

8.45-9.45pm See 7 December

TWO-DAY HORSE RIDING CAMP

10am-3pm See 11 December

22 Tuesday

THREE-DAY HORSE RIDING CAMP

10am-4pm daily See 11 December

23 Wednesday

JUNIOR RANGERS

10am-3pm See 16 January

24 Thursday

MINI RANGERS

10-11am See 10 January

PARK SNAPSHOTS

2-3.30pm See 10 January

TWO-DAY HORSE RIDING CAMP

10am-3pm See 11 December

25 Friday

AUSTRALIAN WILDLIFE SHOW

10-11am See 18 January

SPOTLIGHT PROWL

8.45-9.45pm See 7 December

27 Sunday

PONY RIDES

10am-3pm See 13 January

31 Thursday

PORTRAIT OF A PARK INSIGHT

Visit 'Portrait of a Park' for a talk by Museum of Sydney curator Inara Walden as she provides background to the exhibition design and content. Afterwards, spend some time exploring the historical and contemporary images of Centennial Park while you enjoy a glass of wine and a selection of cheeses. 6.45-8.45pm. \$17.50 per person. Meet Superintendent's Residence, Paddington Gates, cnr Oxford Street and Lang Road. Bookings essential (02) 9339 6699.

FEBRUARY 2002

ALL FEBRUARY

PORTRAIT OF A PARK

See all December

Until 2 February

CIRCUS OZ

See 2 January

Until 23 February

MOONLIGHT CINEMA

See All December

1 Friday

SPOTLIGHT PROWL

8.30-9.30pm See 7 December

7 Thursday

MINI RANGERS

10-11am See 10 January

13 Wednesday

'PORTRAIT OF A PARK' INSIGHT

6.45-8.45pm See 31 January

14 Thursday

VALENTINES DAY

Here's a chance to woo your sweetheart. Centennial Parklands Restaurant is the perfect romantic setting to spend your Valentines evening. You can wine and dine, then follow dinner with a romantic walk in the park. Two courses \$42.50. Three courses \$47.50. Special 10% discount for Friends of Centennial Parklands available (present your key-ring/membership card on the night). From 6pm. Bookings (02) 9360 3355.

20 Wednesday

MY LITTLE PONIES

10-11am See 18 December.

Escape and Explore Bookings

Bookings and advance payment are required for all Escape and Explore activities. Numbers are strictly limited and places will not be held without payment.

Bookings can be made by phoning (02) 9339 6699 or by visiting the Administration Building during normal business hours.

Cancellations made less than 48 hours prior to the activity may not receive a full refund.

In case of rain, please call to confirm the activity is proceeding. A full refund will be given if an activity is cancelled due to wet weather.

☺ indicates discount for Friends of Centennial Parklands. Please present your Friends keyring to secure a discount. Discount is 10% unless otherwise stated.

Centennial Parklands

User's Guide

QUICK GUIDE

First Aid and Emergency

24 hour Ranger service, 7 days.

☎9746 2164 or 9746 0444

Administration

8.30am-5pm Monday-Friday. Located behind Centennial Parklands Café.

☎9339 6699 Fax: 9332 2148

How to Get Here

- **By Bus:** easily accessible by bus. Route 339 from City stations and 355 from Bondi Junction run regular services to Moore Park. Route 378 from Central and 380 from Circular Quay run services to Centennial Park. Phone 131 500 for timetable details.
- **Car:** main gates to Centennial Park open sunrise to sunset. Car Free Days are held on the first Sunday in March, June, September and December. A 30km speed limit applies on all roads in Centennial Park.

Friends of Centennial Parklands

More than a group of park lovers, the Friends are an important association of like-minded people committed to preserving the Parklands' history and culture.

☎9339 6699

Community Consultative Committee

Meets approximately every six weeks. Committee members can be contacted via Centennial Parklands administration. ☎9339 6699 email: ccc@cp.nsw.gov.au web: www.cp.nsw.gov.au/aboutus/community

Park Information

Information, maps and brochures are available from the Administration Building (behind the café) or the Superintendent's Residence, Wednesdays and weekends (10am-3pm)

FACILITIES AND AMENITIES

Centennial Parklands Restaurant

Modern Australian à la carte restaurant offering a full wine list. Open daily for breakfast and lunch. Also available for weddings and function hire. Open 7 days, 8.30am-3pm.

☎9360 3355

Centennial Parklands Café

Specialising in light meals and snacks, the Café offers open air eating in our award-winning forecourt. Open 7 days, 8am-5pm. ☎9380 6922

Centennial Parklands Kiosk

Located next to the Duck Pond, the Kiosk serves sandwiches, light meals, coffee, cold drinks and ice cream. Open Weekends and Public Holidays, 8am-sunset.

Centennial Parklands Children's Centre

Long day care centre for babies to pre-schoolers. ☎9663 1200

Centennial Parklands Equestrian Centre

Formerly the historic Sydney Showgrounds stables, now a world-class Equestrian Centre offering 270 stables, a lunging yard, arenas, veterinarian, agistment providers and riding schools.

☎9332 2809

Moore Park Golf Club

Public 18 hole golf course in the heart of the Eastern Suburbs. Includes Golf Pro Shop and one of the largest driving ranges in Australia.

☎9663 3791

Centennial Parklands Sports Centre

Tennis, basketball and netball courts available for casual or regular use.

☎9662 7033

THINGS TO DO

Cycling & Roller Blading

A 4km cycling and roller blading track follows the perimeter of Grand Drive. A Learner's Cycleway for children is also available (cycling only). Cyclists are not permitted to ride in packs of more than 15. Hire available from:

- Centennial Park Cycles: ☎9398 5027 (bikes & blades)
- Woolys Wheels: ☎9331 2671 (bikes)
- Bondi Boards & Blades: ☎9369 2212 (blades)
- Total Skate: ☎9380 6356 (blades)

Dog Walking

Dogs can be exercised off leash, but under control in Centennial Park outside Grand Drive, and in Moore and Queens Park. Dogs must be on a lead inside the Grand Drive circle and Federation Valley. For safety reasons dogs are not allowed on the horse or cycle track, roads, equestrian grounds, children's playgrounds, Learner's Cycleway, in ponds or on sporting fields when in use. Dogs must be kept 10 metres from BBQs.

Jogging & Walking

A 3.6km jogging track is available around Grand Drive. Self-guided walking trails are located at Lachlan Swamp and the Duck Pond. Guided walks held regularly each season. Guided walks bookings: ☎9339 6699

Horse Riding

Centennial Park is one of the few remaining parks in the world offering inner-city horse riding, with a 3.6km circular horse track and some 2 hectares of fenced equestrian grounds. Horse hire available from:

- Moore Park Stables ☎9360 8747
- Centennial Stables ☎9360 5650
- Eastside Riding Academy ☎9360 7521
- Papillon Riding Stables ☎8356 9866
- Budapest Riding School ☎0419 231 391

Picnics & BBQs

The Parklands offer unlimited picnic spots, with views of ponds, fields and gardens. Also five BBQ locations in Centennial Park and one in Queens Park. Access to picnic areas and BBQs operates on a first-in basis. Bookings required for groups of 50 or over. Bookings: ☎9339 6699

Children's Activities

Ranger-led birthday parties, toddler activities, holiday activities and school excursions are available as part of the Parklands' *Escape and Explore Program*. ☎9339 6699

BOOK A SPACE FOR PLAYING OR ENTERTAINING

Playing Fields

Playing fields in Centennial, Moore and Queens Parks are available for team sports, including cricket, soccer, hockey, rugby and touch-football. Also available is ES Marks Athletics Field featuring an international standard 400 metre recatan running track, shot put, discus, javelin, long high & triple jump facilities. Bookings: ☎9339 6699

Centennial Square

Surrounded by trees and designed for marquees, this site caters for 50 to 1200 people. Located next to one of Centennial Park's historic ponds on the eastern side of the Park. Perfect for weddings, launches and events. Bookings: ☎9339 6699

Centennial Parklands Restaurant

Available for weddings and function hire. 8.30am-3pm. Bookings: ☎9360 3355

Events

Submissions from the public are welcome for activities and events that support the Parklands' cultural policy. Enquiries: ☎9339 6615 or ☎9339 6635.

Filming & Photography

Centennial Parklands offers a versatile range of locations for commercial filming and photography at competitive rates. Enquiries: ☎9339 6621


CENTENNIAL parklands
centennial park moore park queens park

Locked Bag 15
PADDINGTON NSW 2021
Tel: (02) 9339 6699 Fax: (02) 9332 2148
www.cp.nsw.gov.au
email: info@cp.nsw.gov.au