

parklands

VOLUME 27 • WINTER 2004

THE MAGAZINE OF CENTENNIAL PARKLANDS




CENTENNIAL
parklands
is living Sydney

Directions

WELCOME TO THE WINTER ISSUE OF *PARKLANDS*.

There's a definite chill in the air as winter settles upon us and the season starts to take hold. Winter can be a wonderful time to picnic in one of the many sun-filled areas in the Parklands or warm up with a walk or friendly game of soccer. There are many reasons to visit the Parklands in the cooler months.

One of the activities enjoyed in Centennial Parklands has long been recreational cycling but until now, bikes had to be hired in one of the cycling shops situated around the Parklands' perimeter. Soon, you'll be able to hire a bike at Centennial Park. The facility will be conveniently located near the corner of Hamilton and Grand Drives and will be a perfect way to have fun in the Parklands. Why not try it this winter?

In previous issues, we have kept you up-to-date on the Park Improvement Plan projects and their developments. Many visitors to the Parklands may now be noticing these improvements are underway, such as the refurbishment of the Moore Park Rotunda, and netting on some of the ponds to enable aquatic plantings to stabilise. Sydney Water is also conducting much needed maintenance on the pipes around Grand Drive. The time required to undertake these improvements will vary depending on the project.

In early May, the Grand Drive trial surface section was re-opened. Over the period of a week, Centennial Parklands staff were at that location asking visitors for their impressions of the new surfaces. The new surfaces included the cycle lane, roadway and car parking area in addition

to upgrading the pedestrian pathway, defined edging around car parking areas and formalising the existing running track. The work was part of Centennial Parklands general upgrade and maintenance to improve access, parking and safety within the Parklands. If you missed an opportunity to give us your feedback and would like to have your say, please let us know by phone on (02) 9339 6699, email info@cp.nsw.gov.au or visit the website.

The Parks Forum conference held in Canberra from 5-7 May was a great success with representatives from around the world meeting to discuss the topic of *Parks in Society*. There was a great deal of enthusiastic discussion by participants and speakers alike eager to share their ideas and plans for future projects.

A survey of Parklands' readers revealed that many are interested in articles surrounding the history of Centennial Parklands. In response to this request, this issue features a story on the many statues that graced the Park when it first opened in 1888. It outlines the history of the various statues that occupied vantage points within the Park.

Remember, this season's car free day is on Sunday 29 August so walk, cycle, rollerblade or ride and enjoy the magic of Centennial Park without the usual bustle of traffic. ■

Marlene Krasovitsky
Acting Director

Contents

Parklands Magazine is published quarterly by the Centennial Park & Moore Park Trust. Locked Bag 15, Paddington NSW 2021.

Centennial Parklands is managed by the Centennial Park and Moore Park Trust.

Trustees: Professor John Niland AC (Chairman), Annabelle Bennett, David Leckie, Michael Marx AM, Yvette Pietsch, Margaret Varady, John Walker and Sarah Whyte.

Editorial team: Julie Hunter Ward
Anouchka Inglis

email: julie.hunter_ward@cp.nsw.gov.au
anouchka.inglis@cp.nsw.gov.au

Photography: Ian Lever

Printed on recycled paper

Cover: One of the lions forming part of the 'We Won' sculpture in the Cannons Triangle, sculpted by Tommaso Sani.

ISSN: 1447-7645

3 Parkbench

4 Bush Regeneration

4 Telling Tales

5 New Playground

5 New Director

6 Twitcher's Corner

6 Person in the Park

7 Monument Maintenance

8 History of Statues

11 Port Jackson Fig

11 Recipe

12 Friends of the Parklands

13 Highlights

13 Map

14 Winter Events

16 User's Guide



Parkbench



CRICKETER'S MEMORIAL

On Thursday 25 March, a moving re-dedication ceremony was held at the Cricketer's Memorial on the corner of Cleveland St and South Dowling Street at Moore Park. The memorial has significant historical and cultural value being dedicated to the 33 members of the Moore Park Cricket Association who lost their lives in World War I. The memorial was recently restored as part of the Centennial Parklands' Park Improvement Plan.

The re-dedication service was conducted by Redfern R.S.L. Sub Branch Chaplain Father John Knight assisted by Salvation Army Padre Tom Stewart. The service was well attended by those who went to remember the lives of their comrades.

ALLEGED DOG BAITING TEST RESULTS CLEAR

The results of the tests run on a small amount of meat found near Sandstone Ridge have been received. The meat was sent to a laboratory following rumours of dog baiting in Centennial Park. The results indicate that no drugs or poisons were found in the meat and no reports of baiting have been received.

EXTENDED USE OF BORE WATER

Centennial Parklands has extended its use of bore water to the Bus Loop Fields. Previously, this site had used town water and was subject to Sydney water restrictions. As a result of this and constant use by sporting groups, the condition of the fields had deteriorated. The fields have now been renovated and their condition has improved.



POPULAR PONY SADLY MISSED

Moore Park Stables has lost one of its most popular attractions with the death of Darky the pony. Darky recently passed away at 32 years of age. Many adults will no doubt remember the fun they had learning to ride on him as children. He continued to be a feature of the My Little Ponies activity held by the Centennial Parklands' Rangers with children flocking around to pat and ride this much-loved pony. Although Darky will be a hard act to follow, there are still more wonderful rides to be had and ponies to meet at the Centennial Parklands Equestrian Centre. See Winter Events for more information on pony rides.



MERCHANDISE

Centennial Parklands has a range of products for sale at both its Administration Building behind the café and at the Superintendent's Residence near Paddington Gates. Currently, this includes umbrellas, hats, pens, postcards, T-shirts, a picnic rug and walking guides. So on your next visit to the Park, why not call in, take a look and perhaps pick up one of these Park collectibles.

The Administration Building is open 8.30 am to 5.00 pm Monday to Friday and the Superintendent's Residence is open 10.00 am to 3.00 pm Wednesdays and on weekends. We can also be contacted by telephone on (02) 9339 6699, by email on info@cp.nsw.gov.au or visit our website at www.cp.nsw.gov.au.

Volunteer Bush Regeneration Project Blossoms

The Eastern Suburbs Banksia Scrub (ESBS) remnant at York Road near Centennial Park is blossoming under the Centennial Parklands' Volunteer Bush Regeneration Project.

The Eastern Suburbs Banksia Scrub is a heath/scrub community that occurs as a number of small isolated remnants along the Sydney coast from La Perouse to Manly. It is an endangered ecological community that has been listed under both the NSW *Threatened Species Conservation Act (1995)* and the Commonwealth *Environment Protection and Biodiversity Conservation Act (1999)*. Less than three percent of the original area remains.

The isolated remnant at York Road has been heavily disturbed over the years.

From 1930 through to the mid 1960s, the site was almost entirely cleared of vegetation and fly ash was spread on

much of the site. Soil dumping had also occurred leading to erosion and exotic pine trees had been planted in an attempt to stabilise the soil.

In late 2003, 60 of the exotic mature pines were removed along with many other introduced species. With the removal of the ground-covering pine needles and the destruction of much of the native coastal tea tree population during a storm, the area benefited from the newly introduced sunlight. To the delight of the professional bush regenerators on-site, regeneration of a number of native species was apparent within weeks. 'Everything we touch seems to turn to gold' John Diamond, site supervisor, remarked with a smile.

When Centennial Parklands began to enlist the help of volunteers to work with professional bush regenerators to improve the site, 23 people



responded. The Volunteer Bush Regeneration Project provided these volunteers with information, training and guidance to broaden their bush regeneration skills and included information on the history of the sites to be rehabilitated and the significance the sites have to the surrounding areas.

The first day of work on-site was Sunday 28 March. The group was split into three smaller groups, each tackling a different target weed species. Over a period of three days, professional bush regenerators worked with volunteers to clear the endangered bushland of

weeds, remove debris and identify plant species.

The final days will include further plant identification, weed control and debris removal. York Road is the first in a series of sites to be regenerated, and the skills learned by the volunteers will be used in future projects that will have lasting benefits for the community.

Although the process of recovery will be long, the involvement of the volunteers in such a significant project has provided a basis for the continuation of this important regeneration work. ■

Telling Tales at Centennial Park



The rich colonial history of Centennial Parklands is brought to life in the Hunters and Convicts activity which has been introduced to the winter calendar of events in the Parklands. This activity has been developed for children aged six to twelve and is a dramatic storytelling program that was developed in collaboration with Anna Jarrett, a professional storyteller and interpreter.

The program provides children with a deeper appreciation of the people and places that have formed the rich heritage of this special area and incorporates activities from pre-settlement and park development through to the Federation of Australia celebrations in 1901.

Documents and heritage volumes were reviewed in order to determine suitable storylines and appealing characters for children. These characters are transformed into a format for young children using a combination of visualisation techniques, games and costumed re-enactments as well as using a number of locations within the Park to enact each of the different stories.

The characters children play include local Aboriginal people seeking fresh water and food from the abundant swamp, convict workers and night soil collectors causing havoc in the former Sydney Common, and civilised gentry and VIPs attending grand events and

ceremonies. Children who have taken part in the program have thoroughly enjoyed playing the part of these interesting characters.

Following the success of Hunters and Convicts during the school holidays, the activity has now been adapted to suit the curriculum needs for primary students studying 'Australia: You're standing in it', which forms part of the Human Society and its Environment syllabus.

Hunters and Convicts will feature again as part of the July school holiday program. Please see page 14 for more information. ■

New Director

A new Director has been appointed to Centennial Parklands.

Professor Niland AC, Chair of the Centennial Park and Moore Park Trust, recently announced the appointment of Mr Steve Corbett, currently CEO of the Royal Tasmanian Botanical Gardens to the position of Director. Mr Corbett has 28 years industry experience in the management and operation of parks, botanic gardens, estates, landscapes and open space areas.

'Mr Corbett's experience signals that he and the team at the Parklands are well placed to manage the use and ensure the ongoing enjoyment of Centennial Parklands for its many millions of visits each year,' Professor Niland said.

Mr Corbett is currently a member of the Council of Heads of Australian Botanic Gardens and Parks Forum, an Australasian parks industry association. He was also the National President of the Australian Institute of Horticulture from 2000 to 2003.

Director-General of the Department of Tourism, Sport and Recreation, Mr Bill Healey welcomed the appointment of Mr Corbett to the position of Director of Centennial Parklands. 'I am looking forward to working with Steve Corbett on developing stronger synergies between Centennial Parklands and the Department of Tourism, Sport and Recreation in the future,' Mr Healey said.

Mr Corbett previously played a key role in the development of Mount Annan Botanic Garden

in south-west Sydney, and managed the Sydney Gardens, Domain and Government House grounds of the Royal Botanic Gardens. He also served as Manager Estate Projects with the Olympic Coordination Authority at Sydney Olympic Park.

Mr Corbett will take up his position as Director of Centennial Parklands in July this year. ■

Paddington Gates Playground Gets a Facelift

The Paddington Gates playground will be closed temporarily from early May 2004 for approximately five months to upgrade the existing playground and install new equipment.

When completed, the enhanced playground area will provide an exciting new experience for children of all abilities from 1-12 years, including children with special needs.

The playground will create a unique area which compliments the Park space as a recreation area, promotes play, minimises the visual impact of the new and existing play elements and supports the needs of all users.

Two play spaces are proposed. A dynamic play area for climbing, rocking, swinging, spinning, balancing and sliding and a quiet play area for sand play, contemplative play and learning.

For more information please call Centennial Parklands on (02) 9339 6699 or visit www.cp.nsw.gov.au ■



OBJECTIVES	DESIGN PRINCIPLES
<ul style="list-style-type: none">1. To provide a high quality, safe, and enjoyable play environment for all children.2. To provide a play environment that is inclusive and accessible to all children, including those with special needs.3. To provide a play environment that is safe and secure for all children.4. To provide a play environment that is aesthetically pleasing and integrates with the surrounding landscape.	<ul style="list-style-type: none">1. To provide a play environment that is safe and secure for all children.2. To provide a play environment that is aesthetically pleasing and integrates with the surrounding landscape.3. To provide a play environment that is inclusive and accessible to all children, including those with special needs.4. To provide a play environment that is high quality and enjoyable for all children.



Paddington Gates Playground Concept



DATE	REVISION	BY
15/05/04	1	CP

Features will include:

- An imaginative reconfiguration of the existing reusable play equipment
- New equipment and elements which will broaden the play experience
- Access arrangements and experiences suitable for special needs users, including a wheelchair accessible swing
- Integration of the play environment into the existing character of this area of Centennial Park.

Twitcher's Corner

PELICAN BY TREVOR WALLER



Australian Pelicans will be difficult to miss this winter. These striking black and white birds have a prominent bill and an expandable pink throat-pouch of bare elastic skin, which flushes a deep pink during the breeding season. They have attractive white faces with an area of yellowish bare skin around their dark eyes.

Pelicans tend to swim in groups, circling fish and plunging their heads in unison, using the throat-pouch as an expandable dip-net for catching small fish. Their webbed feet also help them to manoeuvre. But a pelican's diet includes much more than fish. They are known to eat frogs, tadpoles, crustaceans and large insects.

These beautiful birds soar in graceful circles to great heights and glide long distances elegantly beating their flat, slender wings at intervals. While in flight they hold their heads back and rest their heavy bills on their breasts. Their wings are black and white on the underwing and black with white panels on the upper surface, and their tail is mainly black with a thin band of white. Often they can be seen flying in lines or in 'v' formations, as this helps to reduce wind resistance and turbulence.

The pelicans' breeding season usually takes place between August and November but can happen at almost anytime, if heavy rain raises water levels. They breed in large colonies

mainly in lakes and estuaries on small bare islands. A pelican's nest is merely a scrape in the ground lined with sticks, grass and seaweed into which they lay two to three eggs. Once the chicks hatch the adults brood them for six to eight days. After which they gradually decrease the time between feeds until the young bird is fully fledged and able to fend for itself.

Look out for pelicans around any pond in the Parklands. They particularly like to perch on the sculptures in Duck Pond or frolic at the water's edge, as the photograph to the left illustrates.

See Winter Events for information on the new Birdwatcher's Breakfast. ■

Person in the Park Rebecca Wilson

Can we use ~ ARK

Rebecca Wilson, from Channel Seven's *110% Tony Squires*, has spent the better part of her life playing, watching and talking sport. Raised in Queensland, she now lives 50 metres from Centennial Park and is a regular visitor.

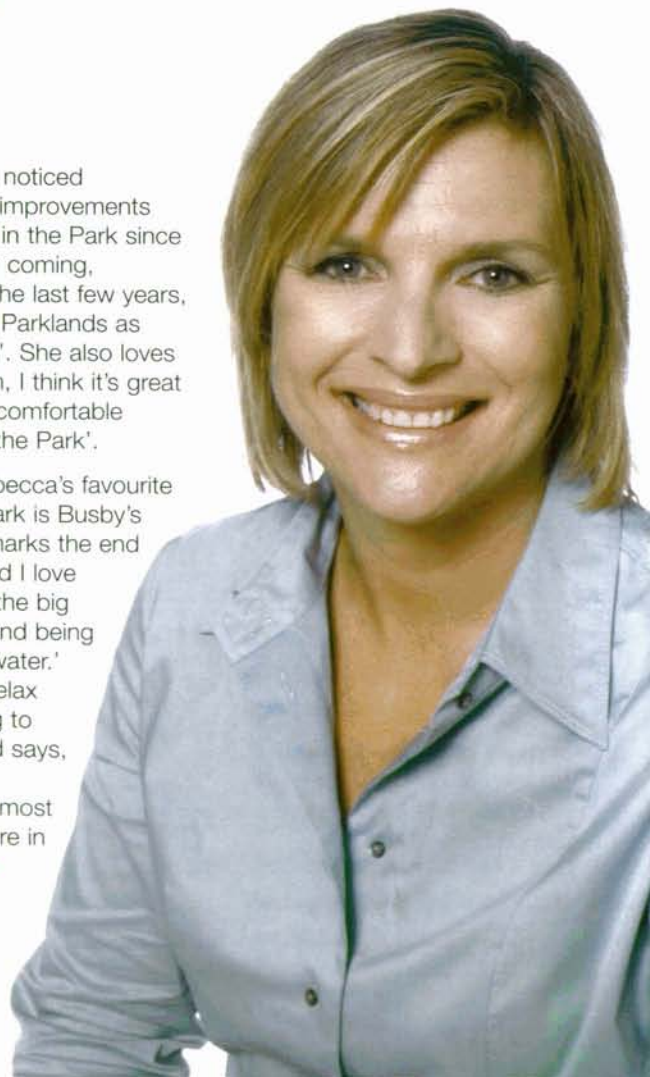
Rebecca moved to Sydney 16 years ago and discovered Centennial Park. She said, 'when I visited the Park for the first time I remember thinking how could anyone get to know it all? There are just so many elements'. Gradually she has explored different areas in the Park marking the different stages in her life, 'I remember enjoying coming down to the Park to picnic and to run before I had my kids and thought I had seen it all'.

'Later on, when I had my children I discovered the bike track,' she said. Now it's not just Rebecca who enjoys coming to Centennial Park. 'As the children have grown there was the soccer stage. Now they come down to play rugby,' says the football mum who spends the weekend watching her young sons play for the Paddo Tigers.

'It's great that so many people can access the Parklands, so many suburbs lie within easy reach of it – it's like all paths lead to the Park and it's such a hub of exercise,' says Rebecca who describes herself as an amateur boxer and a very amateur runner. 'I often run one or two circuits,' Rebecca commented adding, 'but sometimes I run what I call the big loop and follow the path around close to the fence and that makes about seven kilometres'.

Rebecca has noticed considerable improvements and changes in the Park since she has been coming, especially in the last few years, and sees the Parklands as 'a safe haven'. She also loves 'the pram jam, I think it's great mothers feel comfortable exercising in the Park'.

However, Rebecca's favourite spot in the Park is Busby's pond as, 'it marks the end of my run, and I love sitting under the big shady trees and being close to the water.' She likes to relax while listening to the birds, and says, 'with all their sounds – it almost feels like you're in the bush'. ■





Monument Maintenance

Around Centennial Park many of our statues and monuments are receiving a little attention. This small scale restoration work will ensure our favourite structures continue to withstand the elements for years to come. It is part of Centennial Parklands' Stone Maintenance Program. It includes the conservation of stone and metal structures.

Much of the metal work maintenance will be carried out by Peter Maxwell who specialises in metal objects conservation, particularly of outdoor sculpture and monuments, metal materials associated with the built environment as well as collection management of historic and contemporary collections.

Peter rejuvenated the bronze top of the sundial in the Column Garden during the last week of March. The sundial was remounted on stone and the bronze work was repaired and treated. Peter says, 'It has been well loved and cared for – and now it looks fantastic, even the blade that was crooked has

been straightened' although, Peter cautioned, 'it still might be a minute out'.

Peter was caught in action while restoring the cannons in Cannon Triangle. He commented that, 'the beauty of these cannons is that they have never been painted. You can still see the way they were manufactured using early casting techniques – all the elements are there,' adding that there is only one drawback, 'you can't see the beautiful insignia on the top of the barrel – later models put the decoration down at eye level to show it off.'

After removing surface dirt, mould and loose material, Peter applied a special liquid to conserve the cannons. It is a non hazardous mixture containing oil, metal alloy inhibitors specific for iron alloys, drying agent, water repellent and a UV stabiliser. It retards the rate of deterioration and slows corrosion without affecting the appearance of the surface of the cannons.

However, the 'We Won' sculpture requires totally different treatment,' Peter said, 'as it has completely different problems to the cannons'. He starts restoration on that in June.

Although Peter is based in Adelaide, his work takes him from capital cities to remote areas of Far North Queensland and Torres Strait, and even to Antarctica. In Antarctica he carried out field work at the historic huts to assess and document the state of metal components in the huts of Shackleton and Scott at Cape Royds and Cape Evans respectively, and also a smaller collection at Scott's Discovery Hut at McMurdo.

'There is still a lot of equipment there from the heroic era.' Peter said, 'There's an amazing collection of canned food, there's even a curried rabbit – no kidding'. He refers to the time he spent in Antarctica as a 'special part of my life'.

Before specialising in the conservation of cultural materials, Peter spent 16 years in the related fields of metallurgy, foundry processing, water treatment and anti-corrosive paints and coatings, both in Australia and overseas. In addition to being a metallurgist, Peter holds a Bachelor of Applied Science Degree in the Conservation of Cultural Materials, from the University of Canberra, and has completed further studies in paint technology and protective coatings.

Keep an eye out for Peter and say hello if you see him, or you may feel like offering him some advice, such as the lady who was passing while he was cleaning the barrel of one of the cannons. She shook her head and remarked, 'you won't find any cannonballs in there, you know'. To find out more about the statues and monuments, read the article on page 8. ■

A history of Centennial Parklands' Victorian statues

In days gone by, statues graced the nooks and crannies of many picturesque locations of Centennial Park as sculpture was integrated into its fabric. Reliefs on gates, freestanding sculptures and memorials added an artistic and classical element to the Park and also reflected values in society. To celebrate 2004, Australia's Year of the Built Environment, *Parklands* traces the history of our Victorian statues.

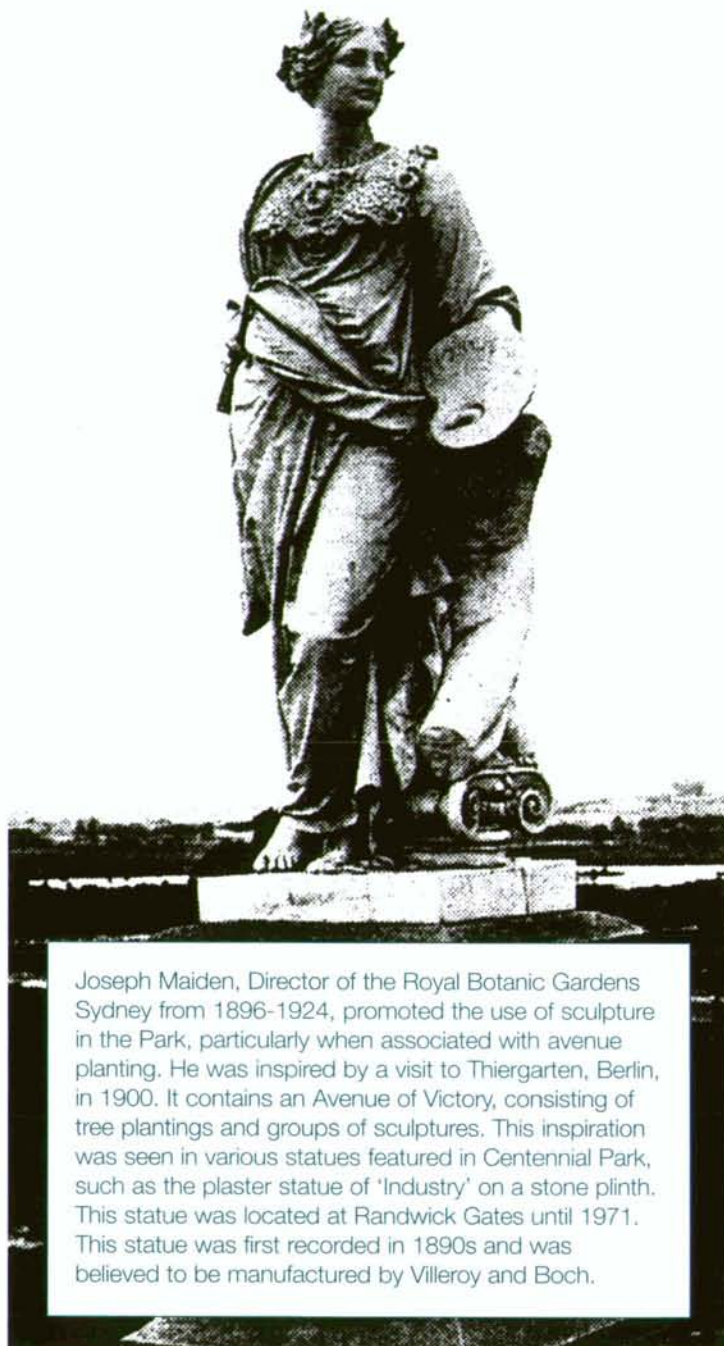
Reminiscent of the era of grand garden designs in Europe, the original design of Centennial Park featured a total of 31 terracotta figures and statues. They were used to accentuate points of intersection and to add interest along the drives and in and around garden areas.

Today, sadly only three statues remain: two terracotta statues, 'Sunrise' and 'Sunset', on sandstone columns in the Rose and Column Gardens and the 'We Won' statue in Cannon Triangle, near the café.

Although many are gone their history still lives on. Many can be traced through the original records of their purchase and the details of the sculptors. The provenance of others remains a mystery.

Probably the most recognised statue in Centennial Park, not only for its prominent position, but also for its subject is that of Sir Henry Parkes standing on the junction of Parkes and Hamilton Drives welcoming visitors to the Park he was instrumental in creating. However, the statue now standing is not the original. The original, made from marble, was the last piece to be placed in the Park in 1897. It was damaged beyond repair in a prank carried out by students in 1971.

In 1993 well-known sculptor Alan Somerville won the competition held to replace this important historical sculpture. The bronze replacement was



Joseph Maiden, Director of the Royal Botanic Gardens Sydney from 1896-1924, promoted the use of sculpture in the Park, particularly when associated with avenue planting. He was inspired by a visit to Thiergarten, Berlin, in 1900. It contains an Avenue of Victory, consisting of tree plantings and groups of sculptures. This inspiration was seen in various statues featured in Centennial Park, such as the plaster statue of 'Industry' on a stone plinth. This statue was located at Randwick Gates until 1971. This statue was first recorded in 1890s and was believed to be manufactured by Villeroy and Boch.

unveiled in 1996 and stands strikingly in the position occupied by the original version. About 100 descendants of Sir Henry Parkes attended the unveiling.

The 1971 vandalism led to a major assessment of the sculptures in the Park, and ultimately the removal for safe-keeping of any sculptures that were likely to be subject to similar attacks of vandalism.

Very little had been documented on the condition of the statues between 1887-1923, except for incidents of vandalism. In 1946 when an inventory was made of the statues in the Park, only 19 were still standing and by 1971 many of those remaining were badly in need of restoration and repair. Consequently, only 'Sunrise' and 'Sunset' were left in place as it was considered their lofty position gave them adequate protection.

These two statues which sit atop the magnificent sandstone columns in the Rose and Column Gardens are the only statues to have continuously remained on site. As such, they are a significant landmark within the Park. Manufactured by the famous Luxembourg pottery company, Villeroy and Boch in 1888, 'Sunrise' is a standing female figure with a baby boy on a half orb, while 'Sunset' is a life size female figure draped in a cloak from the back of the head to the feet.

The nine metre high Corinthian sandstone columns on which they stand have their own story to tell. Originally flanking the front entrance to the William Street Wing of the Australian Museum the fluted columns were dismantled and moved to Centennial Park where they were then used as the base for these statues. Coincidentally, the Australian Museum was partly designed by James Barnett who also designed the Superintendent's Residence in Centennial Park, which was constructed between 1866 and 1868.

Additionally in the original Rose Garden there were four statues of women depicting each of the seasons, also attributed to Villeroy and Boch. By 1946, weathering had taken its toll on their beauty and only Autumn, Spring and Summer were still standing, although in damaged states, with just the pedestal of Winter remaining. They continued to decay and by 1970 their broken limbs, peeling paint and overall disrepair forced their removal.

In 1959, other statues including the Lincoln, Garfield and One More Shot statues had to be removed and dumped as their extensive decay made them too badly damaged to retain.

Sir Henry Parkes commissioned the bronze sculpture 'We won' (also known as the 'Footballer') specifically for Centennial Park.

It was sculpted by the Italian-born, Tommaso Sani and was erected on site in 1893 at the corner of Cannon Triangle overlooking Grand Drive.

It is not only the high artistic achievement and quality of this work which makes it of great significance, but also its unusual subject matter: sport. Portrayed in Sani's humorous manner, this

2.1 metre statue of a footballer dressed in the rugby player's attire of the day has the face of Apollo. The bronze pedestal shows four scenes of a match in progress, however the players are not young muscular men as might be expected but rather many tiny cherubs. To accentuate his satirical point further, the scenes of the match are separated by four large female cherubs who each mock the dignity of the occasion in various ways. The first enthusiastically heralds the beginning of the match on a trumpet, the second records the score, the third invites the attention of the spectators and the last stands victoriously with the lion-skin of Hercules wrapped around her head and shoulders.

matter for important buildings – met with opposition. Today, such a sculpture would probably be classed ahead of its time.

This Florentine sculptor, who made his home in Leichhardt, was part of a small but influential set of Italian artists which included painters Giulio Anivitti and Giuseppe Ferrarini and interior designer Augusto Lorenzini all of whom brought their classical traditions to their Australian work.

On either side of 'We Won' are two imposing cannons. These are from the Crimean war and were donated to Centennial Parklands by the Royal Botanic Gardens. They were placed in their current position in 1920 to



While not placed in the park during the Victorian era, the sundial in the Column Garden has a very special significance to Centennial Parklands. In the 1940s, the daughter of a couple living on Darley Road became very ill. She was confined to home and her illness made her sensitive to the noise from the vehicles on the road outside which made resting difficult. Staff of Centennial Parklands learnt of this problem and would provide off-cuttings from trees and plants to lay across the road in front of the house to soften to noise.

In thanks to Parklands staff's kindness and thoughtfulness the couple donated the sundial to the Park. It is located in the Column Garden and has recently undergone restoration as part of the Stone Maintenance Program.

The statue is surrounded by eight small bronze lions with rings in their mouths. These originally held a bronze chain which circled the base of the sculpture. Today, the lions remain but the chain is gone. The base of the statue was damaged in the 1940s and removed. However it was restored and replaced in 1988.

Sani was controversial in Sydney in the 1880s due to his work on the embellishment of public buildings. His most prominent work was the Pitt Street façade of the GPO building on which his carvings depicting working class figures – not the usual choice of subject

revitalise an area which had been neglected. The cannons have been restored as part of the Stone Maintenance Program.

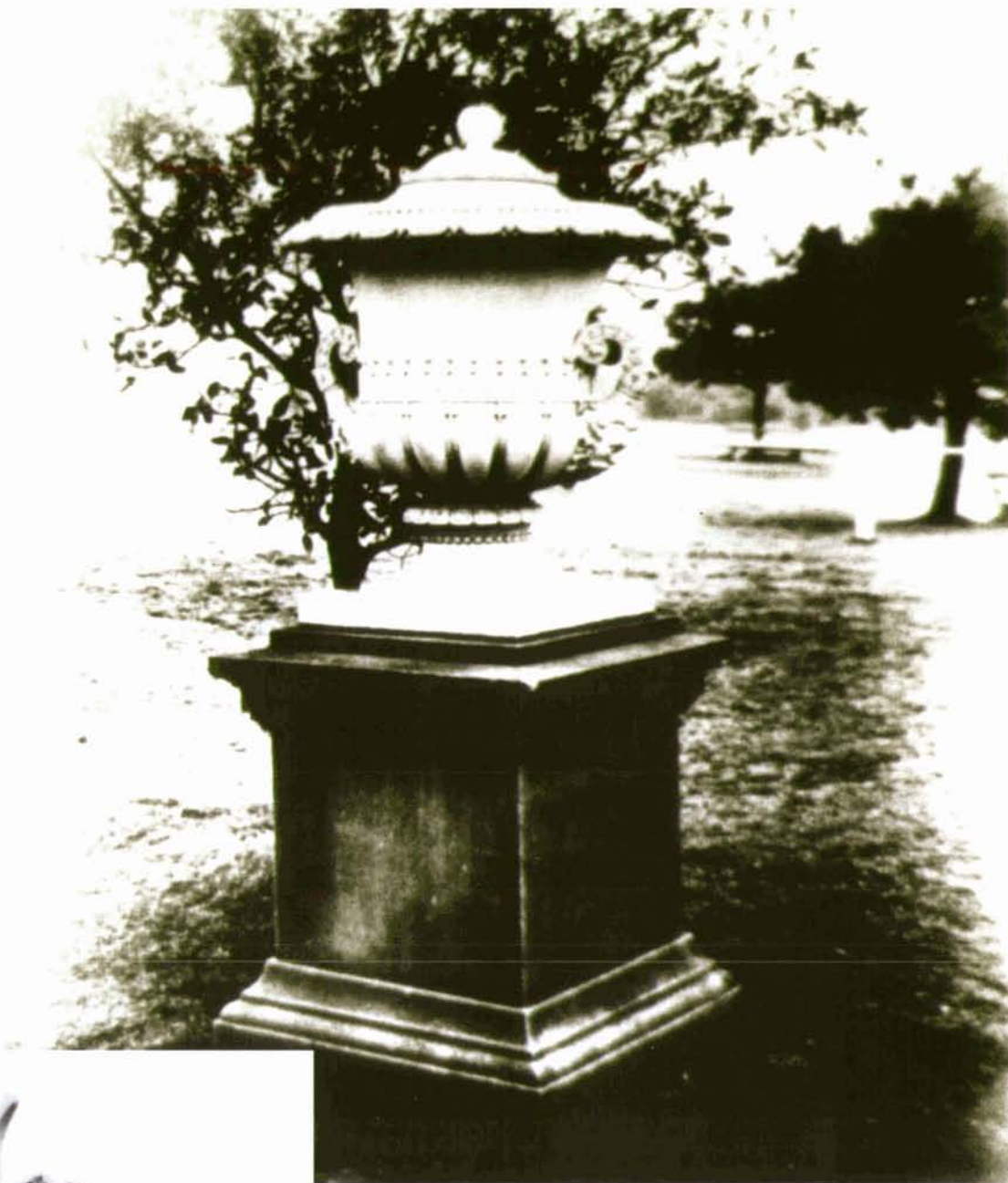
Another statue gracing Grand Drive near the site of the present kiosk was the classically inspired statue 'Charity' which depicted a woman holding a small child in one arm with the other arm around another child leaning close to her skirt. This statue stood on site until 1946 when it was taken down due to extensive damage.

Continued over

A marble 'Diana the Huntress', resplendent with sword and hound, thought to have been sculpted by Hanson, surveyed Grand Drive from her important position in Cannon Triangle until she was removed along with the majority of statues in 1971.

Two gigantic griffins proudly guarded each side of the main entry road leading down from Paddington from the 1890s. They were made of plaster and sat on a stone base. These sculptures, thought to be manufactured by Villeroy and Boch, were recorded as being badly damaged in 1946 and were removed in 1971. They have been stored by Centennial Parklands.

In 1889, four terracotta vases on stone bases sculpted by Rohde and Andra were located at intervals along Grand Drive near Parkes Drive. By 1917, they had to be removed due to extensive damage and decay.



Various structures are being restored under the four year Stone Maintenance Program. The aim of this conservation work is to maintain significant items and decrease their rate of deterioration. All methods and materials used during the work will be documented for future generations. Currently conservation work is being carried out on the statues in the Rose and Column Gardens and on the 'We Won' statue in Cannon Triangle. Much of the metal preservation is being carried out by Peter Maxwell, a specialist in metal objects conservation. (Find out more about Peter Maxwell on page 7 of this magazine).

Although no sculptures were located in Queens Park, Moore Park Golf Course, Tay Reserve, the York Road Remnant or the ES Marks Field, these sites contain historic monuments and fountains and the rich history of these will be covered in future editions.

There are plans to gradually restore some of these statues in the future and reinstate them within Centennial Park. ■

Port Jackson Fig FICUS RUBIGINOSA

Figs are native to the tropics and Australia, and there are about 800 species of them growing as trees, shrubs and vines. They are widely planted for shade, as most are evergreens, and also as ornamental specimens and in avenue planting. There are many examples of each type of planting within Centennial Parklands.

In the Parklands there are 13 species of fig including the Port Jackson, Moreton Bay and Hills Weeping fig, however, Port Jackson figs form the backbone of the tree planting. Port Jackson figs are one of three species that make up the trees on Grand Drive, which accounts for 292 of the 950 found in the Parklands. Other examples of the Port Jackson fig can be found at Randwick Gates, the Church Grounds and Queens Park.

The canopy of the Port Jackson fig is broad, domed and pendulous in habit and can reach heights of 20 metres.

Their leaves, which are dark green on top and rusty brown underneath, are small compared to the Moreton Bay fig but, like all figs, they have a milky sap.

Port Jackson fig fruit is arranged in opposite pairs with no stalk, and it ripens in autumn. Unlike most species, their flower occurs inside the fruit and is pollinated by a species of native wasp which spends most of its life cycle inside the fig. The adult wasp crawls over the fertile flowers cross-pollinating them before escaping from the fig through a briefly open apical pore, which is a hole in the end of the fig.

Curiously, there are at least five different varieties of the Port Jackson fig in the Parklands, each type identifiable by their different coloured foliage and the shape of the tree. Most of the older figs were grown from seed which has allowed for a large variation of genes within the species, hence the differences in the Port Jackson fig population in the Park.



There are examples of 'twin' specimen plantings of Port Jackson figs around the Parklands. Each 'twin' has been chosen to compliment the other, often with one Port Jackson fig with dark coloured foliage planted next to one with foliage of a much lighter colour, as illustrated above.

Port Jackson figs naturally grow in crevices of rocks, and examples of these trees growing in their natural habitat can be seen in Queens Park. Their roots help them to anchor to cliff faces and rock outcrops.

Many of the beautiful plantings of Port Jackson figs, and other trees in the Parklands, are thanks to Joseph Maiden, who was Director of the Royal Botanic Gardens Sydney from 1896-1924. He introduced many species into cultivation, both native and exotic.

Ted Hoare, Senior Arborist, will be giving a tree tour around the Parklands to celebrate National Tree Day on Sunday 25 July. See Winter Events for further details. ■

Recipe



Centennial Parklands Restaurant is open for breakfast and lunch during the winter months and offers a cosy haven to escape from the winter chills. So soak up the sun, enjoy the view and choose from an assortment seasonally selected dishes.

This aromatic crumble is an ideal winter warmer. The sweetness of the pear balances the sharpness of the rhubarb, this together with the infusion of herbs makes a rich flavoured crumble to take the chill out of a cold day.

PEAR AND RHUBARB CRUMBLE
Serves 4

Ingredients

1 bunch of rhubarb
4 pears
1 sprig of mint
1 sprig of basil
60mL orange juice
180g caster sugar

Crumble

100g butter
100g caster sugar
200g plain flour

Method

Chop rhubarb and pear into 2cm cubes and place in a large mixing bowl. Tear mint leaves and basil and mix through the fruit. Add orange juice, balsamic vinegar and sugar and mix well. Place mixture into a large buttered high-sided oven proof dish, or into individual oven proof ramekins.

To make the crumble rub the butter into the flour until the mixture resembles bread crumbs. Then lightly mix through the sugar. Cover the fruit with the crumble mixture.

Bake in moderately hot oven (200°C) for 15-20 minutes. Serve with fresh cream or ice cream. ■

Friends of the Parklands

JOIN THE FRIENDS OF CENTENNIAL PARKLANDS

AND GET SPECIAL DISCOUNTS ON CENTENNIAL PARKLANDS EVENTS!

Become a *Friend of Centennial Parklands* and help support Centennial Park, Moore Park and Queens Park.

As a *Friend* you'll enjoy great discounts on a wide variety of events and activities. This includes 10% off our ranger-guided walks and kid's activities – excellent value for families.

Look for the ☺ symbol on the Events page for activities attracting discounts and details on how to claim the special *Friends* rate.

The benefits include:

- 10% discount at Centennial Parklands Restaurant & Café
- 10% discount on ranger-guided walks
- Discounts on selected events
- *Parklands* magazine posted quarterly
- Membership key ring and certificate
- Exclusive *Friends* events, including annual Christmas party

TO JOIN, SIMPLY COMPLETE AND MAIL OR FAX THE FORM BELOW

Name: _____

Address: _____

Postcode: _____

Telephone: _____

Email: _____

Please charge: ☐ \$55 1 year Single membership
or
☐ \$99 1 year Family membership

And a tax deductible donation to the Centennial Parklands Foundation of: (choose one) ☐ \$45 ☐ \$75

☐ \$100 ☐ \$ _____
(other amount)

to my ☐ Bankcard ☐ Mastercard ☐ Visa

Card no

Expiry date

Card Holder's name _____

Card Holder's signature _____

Or payment of \$ _____ is enclosed
(cheques payable to Centennial Parklands Foundation)

☐ Please send me information about leaving a bequest in my will

Send to (no stamp required):
Friends of Centennial Parklands
Reply Paid 58
Locked Bag 15
PADDINGTON NSW 2021

Or by email at www.cp.nsw.gov.au.

For more information:
Phone: (02) 9339 6699
Email: info@cp.nsw.gov.au

KEEPING IT CLEAN!

Enthusiastic *Friends of Centennial Parklands* joined with community volunteers on Sunday 7 March to take part in the annual Clean Up Australia Day activity in Centennial Parklands. Individuals and small groups started out at the Superintendent's Residence and trekked into the farthest corners of Centennial Park, Moore Park and Queens Park in a concerted effort to improve the Parklands' environment.

Plastic bags and smaller items of rubbish such as lolly wrappers and cigarette butts pose great risks for wildlife in the Parklands. They can be eaten by the resident birdlife and animals and can also be washed into the stormwater system that runs into the Parklands' ponds. This creates a hazard for fish and eels which populate these waterways.

The efforts of our *Friends* and volunteers demonstrate how much people really care about the Parklands' environment. Acting Director, Marlene Krasovitsky, conveyed her thanks to all participating *Friends* and volunteers, as well as a special thank you to Ranger Anna Murray for coordinating the activity. ■

SPECIAL WINTER EVENTS FOR FRIENDS

Three fantastic events have been organised for *Friends* during the winter months this year, kicked off by a walking tour of historic Victoria Barracks on Thursday 24 June with morning tea in the exclusive Officers' Mess after the tour. In late August, *Friends* can enjoy the ambiance of the Centennial Parklands Restaurant at the Sustainable Gardening Dinner and with September heralding the start of spring, *Friends* can take the opportunity to get their hands dirty and do some planting in Centennial Parklands.

So if you want to come along to these, and other interesting *Friends* events, become a *Friend* today.

A WARM WELCOME TO NEW MEMBERS OF FRIENDS OF THE PARKLANDS:

Ms Nicole McKenna
Dr Robert and
Ms Margie Cortis-Jones
Miss Cheryl Stewart
Ms Lyndall Bell
Miss Karen Miller
Ms Janet Sculfer
Ms Louise Murray
Mr George Ritter
Ms Erica Rink
Ms Sue Owen
Ms Emily Fewster
Ms Yvonne Paul
Mr John O'Neill
A S Johnstone
Mr Sam Malouf
Miss Christine Wright
Ms Kerryn Boland
Miss Jennifer Broadbent
Mrs Gail Broadbent
Mrs Elizabeth Tregoning

Highlights



ART COMPETITION

Celebrate the Horse's Birthday on 1 August by participating in the exciting Centennial Parklands' Art Competition. Entry is open to anyone under 18 years of age. Simply design a poster-style artwork up to A3 in size. Posters must include a picture of a horse and a slogan about horses in Centennial Park. Please write your name, age and contact phone number on the back of your poster. All posters are to be completed by children under the age of 18.

Address your entry to Centennial Parklands Art Competition, Locked Bag 15, PADDINGTON NSW 2021, or deliver to the Administration Building, behind Centennial Parklands Café. Competition closes 5.00 pm Friday, 16 July. Posters will be displayed from Friday, 23 July and judged at 2.00 pm on Sunday, 1 August at A Pavilion, Centennial Parklands Equestrian Centre. *Enquiries (02) 9339 6699.*

Tuesday 1 June



TED'S TREE TOUR

To celebrate National Tree Day, join Ted Hoare, Centennial Parklands' Senior Arborist, on a guided walk looking at Centennial Park's majestic trees.

Listen as Ted explains the origins and features of the Park's trees and plantings and outlines future planning directions.

10.00 am – 12 noon. \$12 per person. Meet at Cannons, above Centennial Parklands Café.

Bookings essential (02) 9339 6699.

Sunday 25 July



BICYCLE BRUNCH TOUR

What better way to see the sights of Centennial Park than on your bike on Car Free Day? Enjoy a leisurely Sunday ride around Centennial Park's tree-lined avenues while the Rangers guide you through some of the wonderful features of this much-loved place. Pass by century-old structures, colourful garden beds, ponds filled with birdlife and hear stories and experiences from the people that know Centennial Park so well. For adults. Bring bicycle and helmet or hire them on-site. 9.00 am – 11.00 am. \$15 per person. Includes brunch. Meet Superintendent's Residence, Paddington Gates. Finishes at Shelter Pavilion. *Bookings essential (02) 9339 6699.*

Sunday 29 August

MAP OF CENTENNIAL PARKLANDS



WINTER Events

JUNE • JULY • AUGUST

AVOID THE FUSS. CATCH THE BUS

ALL SEASON

THE SPACES BETWEEN

*Healthy Parks
Healthy People*

This exhibition at Centennial Parklands explores the history, diversity and benefits of our city's myriad of public parks. These are the spaces between the city and suburb, between the workplace and home, between the past, present and future. Superintendent's Residence, Paddington Gates. Open Wednesdays and weekends 10.00 am – 3.00 pm until October 2004.

JUNE

1 Tuesday

ART COMPETITION

Celebrate the Horse's Birthday on 1 August by participating in the exciting Centennial Parklands Art Competition. Entry is open to anyone under 18 years of age. Simply design a poster-style artwork up to A3 in size. Posters must include a picture of a horse and a slogan about horses in Centennial Park. See Highlights page for more information. Enquiries (02) 9339 6699.

4 Friday

TIMBER AND WORKING WITH WOOD SHOW

Enjoy the wonders of wood and see the latest in products and services. For all those with a passion for working with wood. Royal Hall of Industries and Hordern Pavilion. Ends 6 June. Adults \$14, concession \$11 and children under 14 free.

18 Friday

BUSBY'S BORE WALK ☺

Walk the route of Busby's Bore, the underground supply of early Sydney's drinking water, with retired Sydney Water historian, Jon Breen. Visit the source of the bore at Busby's Pond and the memorial cairn in Centennial Park; and see an exclusive viewing of the shaft into Busby's Bore within Fox Studios. For adults. 10.00 am – 12 noon. \$12 per person. Meet Robertson Road Gates. Finishes at Fox Studios. Bookings essential (02) 9339 6699.

20 Sunday

SPOTLIGHT PROWL

A chance to see the wild nightlife of Centennial Park. Join Rangers spotlighting possums, flying foxes and other night creatures. All ages. Bring torch. 5.30 pm – 6.30 pm. \$9 per person. Meet Robertson Road Gates. Bookings essential (02) 9339 6699.

21 Monday

MY LITTLE PONIES ☺

A special children's tour of the Centennial Parklands Equestrian Centre. Find out where the horses live, what they eat and how to care for them. Includes a short pony ride. Wear covered shoes. 10.00 am – 11.00 am. \$10 per child (2 – 5 years), adults free. Meet Equestrian Centre Gates, corner Lang and Cook Roads. Bookings essential (02) 9339 6699.

25 Friday

MY LITTLE PONIES ☺

See 21 June

27 Sunday

BIRDWATCHER'S BREAKFAST ☺

*Healthy Parks
Healthy People*

Join this early morning guided tour to spot some of the Parklands' migratory and resident land and water birds. A new meeting point and route will allow the chance to visit some different birdwatching locations. For adults. Bring binoculars. 7.30 am – 9.30 am. Includes breakfast. \$15 per person. Meet Robertson Road Gates, corner Robertson and Lang Roads. Finishes at Shelter Pavilion. Bookings essential (02) 9339 6699.

JULY

3 Saturday

PONY RIDES ☺

The only place where kids can jump into the saddle so close to the city! Hand-led, 10 minute rides for children. Limited tickets. 10.00 am – 3.00 pm **or until sold out**. \$9 per ride. Tickets at Mobile Ranger Station, Centennial Parklands Café. Weather permitting. Bookings not required.

4 Sunday

PONY RIDES ☺

See 3 July

FROG MOBILE

For everything you have ever wanted to know about frogs, come and meet Lothar Voigt from the Frog and Tadpole Study Group and view his very special Frog Mobile. 10.00 am – 3.00 pm. Free of charge. Shelter Pavilion, Parkes Drive.

5 Monday

WINTER HOLIDAY TENNIS CAMP

Practice and improve your tennis skills in this five day workshop, and there's even a chance to win a racquet at every camp! BBQ and presentation ceremony on last day of the camp. Bring tennis racquet, hat, sunscreen, water bottle and cold/wet weather clothing. \$130 for five days or \$35.00 per day. 9.30 am – 3.00 pm daily. Supervision available from 8.30 am – 4.00 pm, \$50 deposit. Bookings (02) 9662 7033.

6 Tuesday

HUNTERS AND CONVICTS ☺

What was Centennial Park before it was a park? What did the area look like, who lived here and what did they do? Will you be the hunter, the convict or perhaps the ranger as you dress up and play a part in the story of Centennial Park through the different centuries? 2.00 pm – 3.30 pm. \$9.50 per child (6 – 12 years). Meet Shelter Pavilion. Bookings essential (02) 9339 6699.

SPOTLIGHT PROWL ☺

5.30 pm – 6.30 pm. See 20 June

SCHOOL HOLIDAY PONY CAMPS

9.00 am – 3.00 pm. \$270. Papillon Riding Stable. Bookings 0407 224 938

TWO-DAY HOLIDAY PONY CAMP

Learn horse management skills. Includes two lessons per day. 9.30 am – 3.30 pm, or 7.30 am – 5.30 pm. Block card holders \$10 off. Centennial Stables. Bookings (02) 9360 5650.

TWO-DAY HOLIDAY PONY CAMP ☺

10.00 am – 3.00 pm. \$200. Moore Park Stables. Bookings (02) 9360 8747.

WINTER HOLIDAY TENNIS CAMP

See 5 July

7 Wednesday

FINDING PENNY POSSUM ☺

Where does Penny Possum live? Hear the story of Penny Possum and her home in Centennial Park. Help the Rangers build Penny a new home and make a Penny Possum Puppet to take home with you. Bring hat. 10.00 am – 11.00 am. \$8.50 per child (2 – 5 years). Meet Shelter Pavilion. Bookings essential (02) 9339 6699.

KRAZY KITES ☺

Come along to this kite-flying workshop to fly kites of all shapes and sizes. Construct and decorate your very own kite to take home, and practice flying your kite under the guidance of kite expert Michael Richards. All materials included. Bring hat. 1.00 pm – 3.00 pm. \$9.50 per child (7 – 12 years). Meet Administration Building, behind the Centennial Parklands Café. Bookings essential (02) 9339 6699.

SCHOOL HOLIDAY PONY CAMPS

See 6 July

TWO-DAY HOLIDAY PONY CAMP ☺

See 6 July

TWO-DAY HOLIDAY PONY CAMP

See 6 July

WINTER HOLIDAY TENNIS CAMP

See 5 July

8 Thursday

MAGICAL MELALEUCA ☺

Did you know that the real name for a paperbark tree is a Melaleuca tree? Discover all about the magic of the Melaleuca and the animals that use it for their homes and their food. Play games and create your own Melaleuca craft. Bring hat. 10.00 am – 11.00 am. \$8.50 per child (2 – 5 years). Meet Shelter Pavilion. Bookings essential (02) 9339 6699.

MODEL YACHT WORKSHOP ☺

Build a simple model yacht in this unique workshop and learn the age-old technique of sailing models on Kippax Lake. All materials included. Bring hat. 1.00 pm – 2.30 pm. \$18 per child (6 – 12 years). Meet Kippax Lake, Driver Avenue, Moore Park. Bookings essential (02) 9339 6699.

SCHOOL HOLIDAY PONY CAMPS

See 6 July

TWO-DAY HOLIDAY PONY CAMP

See 6 July

TWO-DAY HOLIDAY PONY CAMP ☺

See 6 July

WINTER HOLIDAY TENNIS CAMP

See 5 July

9 Friday

SPOTLIGHT PROWL ☺

5.30 pm – 6.30 pm. See 20 June

TWO-DAY HOLIDAY PONY CAMP

See 6 July

TWO-DAY HOLIDAY PONY CAMP ☺

See 6 July

WINTER HOLIDAY TENNIS CAMP

See 5 July

10 Saturday

PONY RIDES ☺

See 3 July

11 Sunday

PONY RIDES ☺

See 3 July

12 Monday

WINTER HOLIDAY TENNIS CAMP

See 5 July

13 Tuesday

MODEL YACHT WORKSHOP ☺

See 8 July

SCHOOL HOLIDAY PONY CAMPS

See 6 July

TWO-DAY HOLIDAY PONY CAMP

See 6 July

TWO-DAY HOLIDAY PONY CAMP ☺

See 6 July

WINTER HOLIDAY TENNIS CAMP

See 5 July

14 Wednesday

MAGICAL MELALEUCA ☺

See 8 July

SPOTLIGHT PROWL ☺

5.30 pm – 6.30 pm. See 20 June

SCHOOL HOLIDAY PONY CAMPS

See 6 July

TWO-DAY HOLIDAY PONY CAMP

See 6 July

TWO-DAY HOLIDAY PONY CAMP ☺

See 6 July

WINTER HOLIDAY TENNIS CAMP

See 5 July

15 Thursday

FINDING PENNY POSSUM ☺

See 7 July

KRAZY KITES ☺

See 7 July

SCHOOL HOLIDAY PONY CAMPS

See 6 July

TWO-DAY HOLIDAY PONY CAMP

See 6 July

TWO-DAY HOLIDAY PONY CAMP ☺

See 6 July

WINTER HOLIDAY TENNIS CAMP

See 5 July

16 Friday

ART COMPETITION CLOSES

See 1 June

SPOTLIGHT PROWL ☺

5.30 pm – 6.30 pm. See 20 June

TWO-DAY HOLIDAY PONY CAMP

See 6 July

TWO-DAY HOLIDAY PONY CAMP ☺

See 6 July

WINTER HOLIDAY TENNIS CAMP

See 5 July

17 Saturday

PONY RIDES ☺

See 3 July

18 Sunday

PONY RIDES ☺

See 3 July

22 Thursday

SYDNEY AFFORDABLE ART SHOW

Returns for four days to offer visitors the chance to view and purchase a wide selection of artworks. Present this magazine at the box office and buy two adult tickets for the price of one. Royal Hall of Industries. Ends 25 July. Adults \$17, concession \$13 and children under 16 free.

25 Sunday

TED'S TREE TOUR – NATIONAL TREE DAY ☺

*Healthy Parks
Healthy People*

To celebrate National Tree Day, join Ted Hoare, Senior Arborist, on a guided walk looking at Centennial Park's majestic trees. Listen as Ted explains the origins and features of the Park's trees and plantings and outlines future planning directions. 11.00 am – 1.00 pm. \$12 per person. Meet at the Cannons, above Centennial Parklands Café. Bookings essential (02) 9339 6699.

SPOTLIGHT PROWL ☺

5.30 pm – 6.30 pm. See 20 June

AUGUST

1 Sunday

ART COMPETITION WINNERS ANNOUNCED

See 1 June

6 Friday

MY LITTLE PONIES ☺

See 21 June

8 Sunday

BIRDWATCHER'S BREAKFAST ☺

See 27 June

9 Monday

MY LITTLE PONIES ☺

See 21 June

14 Saturday

THE PRINCE OF WALES HOSPITAL RIDE FOR LIFE

Join in this event to raise money for the Oncology Department of The Prince of Wales Hospital. People of all cycling ability and ages are encouraged to take part, from recreational to elite cyclists. There are different events for cyclists to join in, including a family pedal. Starts at 8.00 am. Bookings (02) 9382 4263.

15 Sunday

CARING FOR URBAN WILDLIFE ☺

Join Rangers and experienced wildlife carers from WIRES Eastern Branch in this 5-hour interactive session about the care of urban wildlife. Discover the best techniques for caring for and handling injured animals, learn how to attract wildlife to your garden and find out how to prevent native species from becoming pests. The workshop will also include a habitat walk and a visit to the Frog Mobile. For adults. 10.00 am – 3.00 pm. \$38.50 per person. Includes lunch. Meet Administration Building, behind the Centennial Parklands Café. Bookings essential (02) 9339 6699.

FROG MOBILE

See 4 July

22 Sunday

PHOTOGRAPHY IN THE PARK ☺

*Healthy Parks
Healthy People*

Learn to photograph your favourite flowers, birds, vistas or landscapes in this two-hour practical introduction to photography with renowned local photographer Ian Lever. Bookings essential (02) 9339 6699.

27 Friday

SPOTLIGHT PROWL ☺

6.00 pm – 7.00 pm. See 20 June

29 Sunday

CAR FREE DAY

Walk, cycle or catch public transport and enjoy the last Sunday of winter in the peaceful surroundings of Centennial Park. Accessible entry via Musgrave Avenue Gates (adjacent to toilets, barbecues and picnic facilities). 9.00 am – 5.00 pm.

BICYCLE BRUNCH TOUR ☺

*Healthy Parks
Healthy People*

What better way to see the sights of Centennial Park than on your bike on Car Free Day? Enjoy a leisurely Sunday ride around Centennial Park's tree-lined avenues while the Rangers guide you through some of the wonderful features of this much-loved place. See Highlights page for more information. Bookings essential (02) 9339 6699.

Centennial Parklands

User's Guide

QUICK GUIDE

First Aid and Emergency

24 hour Ranger service, 7 days.
☎ 9746 2164 or 9746 0444

Administration

8.30 am-5.00 pm Monday-Friday.
Located behind Centennial Parklands
Café. ☎ 9339 6699 Fax: 9332 2148

How to Get Here

- By Bus: easily accessible by bus.
Route 339 from City stations and 355 from Bondi Junction run regular services to Moore Park. Route 378 from Central and 380 from Circular Quay run services to Centennial Park. Phone 131 500 for timetable details.
- Car: main gates to Centennial Park open sunrise to sunset. Car Free Days are held on the last Sunday in February, May, August and November. A 30 km speed limit applies on all roads in Centennial Park.

Friends of Centennial Parklands

More than a group of park lovers, the Friends are an important association of like-minded people committed to preserving the Parklands' history and culture. ☎ 9339 6699

Community Consultative Committee

Meets approximately every six weeks. Committee members can be contacted via Centennial Parklands administration. ☎ 9339 6699
email: ccc@cp.nsw.gov.au
web: www.cp.nsw.gov.au/aboutus/community

Park Information

Information, maps and brochures are available from the Administration Building (behind the cafe) or the Superintendent's Residence, Wednesdays and weekends (10.00 am-3.00 pm).

FACILITIES AND AMENITIES

Centennial Parklands Restaurant

Modern Australian a la carte restaurant offering a full wine list. Open daily for breakfast and lunch. Also available for weddings and function hire. Open 7 days, 8.30 am-3.00 pm. ☎ 9360 3355

Centennial Parklands Cafe

Specialising in light meals and snacks, the Cafe offers open air eating in its award-winning forecourt. Open 7 days, 8.00 am-5.00 pm. ☎ 9380 6922

Centennial Parklands Kiosk

Located next to the Duck Pond, the Kiosk serves sandwiches, light meals, coffee, cold drinks and ice cream. Open weekends and public holidays, 8.00 am-sunset.

Centennial Parklands Children's Centre

Day care centre for babies to pre-schoolers. ☎ 9663 1200

Centennial Parklands Equestrian Centre

Formerly the historic Sydney Showgrounds stables, now a world-class Equestrian Centre offering 270 stables, a lunging yard, arenas, veterinarian, agistment providers and riding schools. ☎ 9332 2809

Moore Park Golf Club

Public 18 hole golf course in the heart of the Eastern Suburbs. Includes Golf Pro Shop and one of the largest driving ranges in Australia. 9663 3791

Centennial Parklands Sports Centre

Tennis, basketball and netball courts available for casual or regular use. ☎ 9662 7033

THINGS TO DO

Cycling & Roller Blading

A 4 km cycling and roller blading track follows the perimeter of Grand Drive. A Learner's Cycleway for children is also available (cycling only). Cyclists are not permitted to ride in groups of more than 15. Hire available from:

- Centennial Park Cycles:
☎ 9398 5027 (bikes & blades)
- Woollys Wheels:
☎ 9331 2671 (bikes)
- Bondi Boards & Blades:
☎ 9369 2212 (blades)
- Total Skate:
☎ 9380 6356 (blades)

Dog Walking

Under NSW law, dogs must be held on a leash in all public areas, unless otherwise designated, and no more than four dogs can be walked by one person. Dogs with responsible owners are welcome in Centennial Parklands and can be exercised off leash in certain areas. To find out more about areas in Centennial Parklands where dog walking is permitted, please contact us for a copy of our dog brochure or visit our website: www.cp.nsw.gov.au/aboutus/dog.htm.

Jogging & Walking

A 3.6km jogging track is available around Grand Drive. Self-guided walking trails are located at Lachlan Swamp and the Duck Pond. Guided walks held regularly each season. Guided walks bookings: ☎ 9339 6699

Horse Riding

Centennial Park is one of the few remaining parks in the world offering inner-city horse riding, with a 3.6 km circular horse track and some two hectares of fenced equestrian grounds. Horse hire available from:

- Moore Park Stables
☎ 9360 8747
- Centennial Stables
☎ 9360 5650
- Eastside Riding Academy
☎ 9360 7521
- Papillon Riding Stables
☎ 8356 9866
- Budapest Riding School
☎ 0419 231 391

Picnics & BBQs

The Parklands offer unlimited picnic spots, with views of ponds, fields and gardens. There are also five free BBQ locations in Centennial Park and one in Queens Park. Access to picnic areas and BBQs operates on a first-in basis. Bookings required for groups of 50 or over. Bookings: ☎ 9339 6699

Education and Public Programs

School excursions, holiday activities, guided tours and workshops, children's birthday parties, are all on offer at Centennial Parklands. Enquiries: ☎ 9339 6699

BOOK A SPACE FOR PLAYING OR ENTERTAINING

Playing Fields

Playing fields in Centennial, Moore and Queens Parks are available for team sports, including cricket, soccer, hockey, rugby and touch-football. Also available is ES Marks Athletics Field featuring an international standard 400 metre running track, shot put, discus, javelin, long, high and triple jump facilities. Bookings: ☎ 9339 6699

Centennial Square

Surrounded by trees and designed for marquees, this site caters for 50 to 1200 people. Located next to one of Centennial Park's historic ponds on the eastern side of the Park. Perfect for weddings, launches and events. Bookings: ☎ 9339 6699

Centennial Parklands Restaurant

Available for weddings and function hire. Bookings: ☎ 9360 3355

Events

Submissions from the public are welcome for activities and events that support the Parklands' cultural policy. Enquiries: ☎ 9339 6615 or 9339 6635.

Filming & Photography

Centennial Parklands offers a versatile range of locations for commercial filming and photography at competitive rates. Enquiries: ☎ 9339 6635



Locked Bag 15
PADDINGTON NSW 2021
Tel: (02) 9339 6699 Fax: (02) 9332 2148
www.cp.nsw.gov.au
email: info@cp.nsw.gov.au