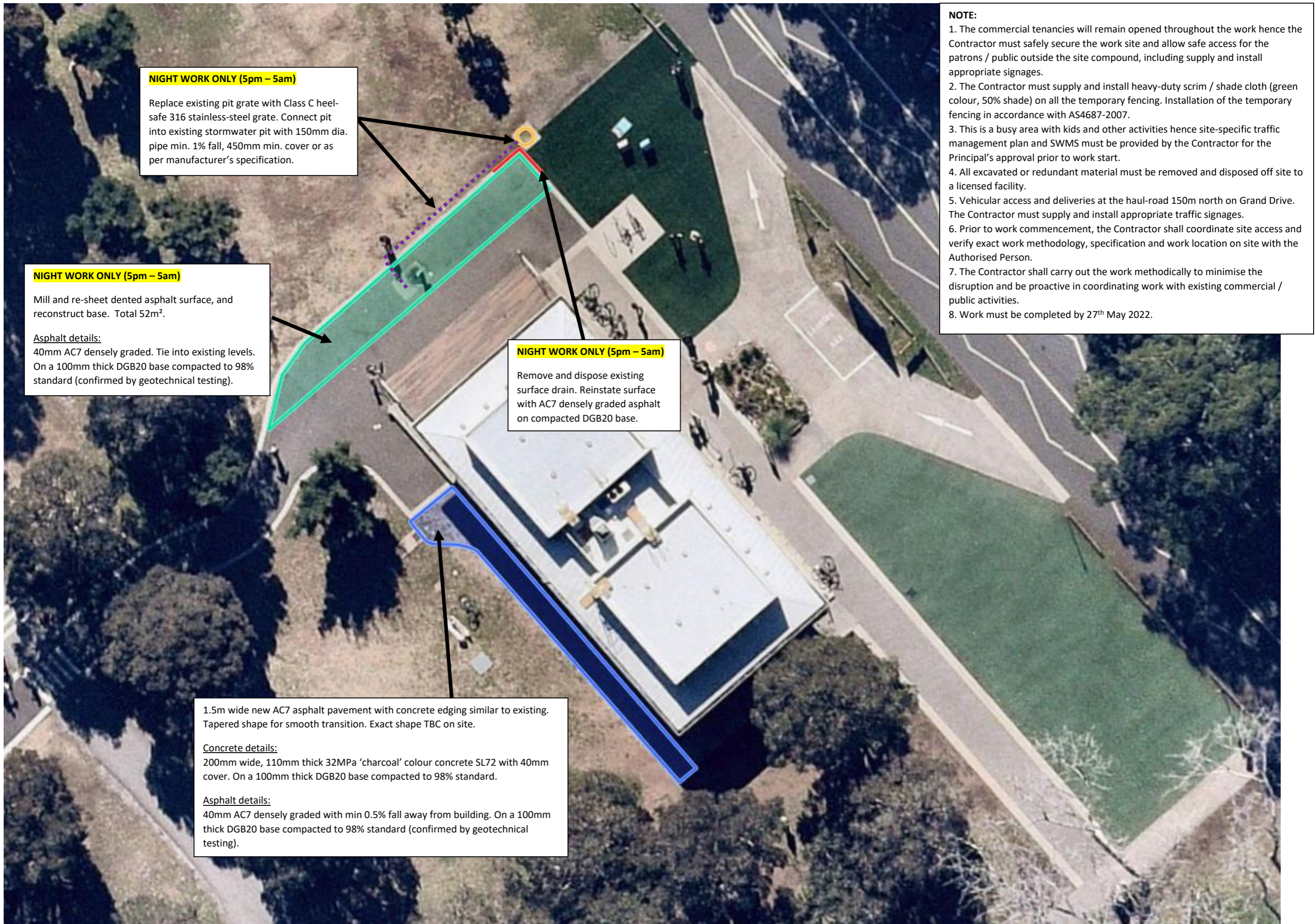


SCOPE OF WORK



NIGHT WORK ONLY (5pm – 5am)

Replace existing pit grate with Class C heel-safe 316 stainless-steel grate. Connect pit into existing stormwater pit with 150mm dia. pipe min. 1% fall, 450mm min. cover or as per manufacturer's specification.

NIGHT WORK ONLY (5pm – 5am)

Mill and re-sheet dented asphalt surface, and reconstruct base. Total 52m².

Asphalt details:

40mm AC7 densely graded. Tie into existing levels. On a 100mm thick DGB20 base compacted to 98% standard (confirmed by geotechnical testing).

NIGHT WORK ONLY (5pm – 5am)

Remove and dispose existing surface drain. Reinstatement surface with AC7 densely graded asphalt on compacted DGB20 base.

1.5m wide new AC7 asphalt pavement with concrete edging similar to existing. Tapered shape for smooth transition. Exact shape TBC on site.

Concrete details:

200mm wide, 110mm thick 32MPa 'charcoal' colour concrete SL72 with 40mm cover. On a 100mm thick DGB20 base compacted to 98% standard.

Asphalt details:

40mm AC7 densely graded with min 0.5% fall away from building. On a 100mm thick DGB20 base compacted to 98% standard (confirmed by geotechnical testing).

NOTE:

1. The commercial tenancies will remain opened throughout the work hence the Contractor must safely secure the work site and allow safe access for the patrons / public outside the site compound, including supply and install appropriate signages.
2. The Contractor must supply and install heavy-duty scrim / shade cloth (green colour, 50% shade) on all the temporary fencing. Installation of the temporary fencing in accordance with AS4687-2007.
3. This is a busy area with kids and other activities hence site-specific traffic management plan and SWMS must be provided by the Contractor for the Principal's approval prior to work start.
4. All excavated or redundant material must be removed and disposed off site to a licensed facility.
5. Vehicular access and deliveries at the haul-road 150m north on Grand Drive. The Contractor must supply and install appropriate traffic signages.
6. Prior to work commencement, the Contractor shall coordinate site access and verify exact work methodology, specification and work location on site with the Authorised Person.
7. The Contractor shall carry out the work methodically to minimise the disruption and be proactive in coordinating work with existing commercial / public activities.
8. Work must be completed by 27th May 2022.