

**MOORE PARK SOUTH – DRAFT ESTABLISHMENT PLAN**

**Name:** Name withheld 14

**Date received:** 23 November 2025

---



## **MOORE PARK SOUTH – DRAFT ESTABLISHMENT PLAN**

**Name:** Name withheld 15

**Date received:** 23 November 2025

---

I have played golf at Moore Park over many years. It is a very good public course. Given how popular it is, it would be a travesty to destroy it. Retaining 9 holes would halve the number of rounds that could be played on the course, and would remove the variety of play that only an 18 hole format can provide.

The proposal put forward by, amongst others, Moore Park Golf Club, is a sensible compromise, retaining 18 holes and allowing more use of the site for non-golf activities.

The government proposal is flawed in many respects, apart from the removal of an 18 hole course:

The 2nd is too long for a par 3.

The distance between the 2nd green and the 3rd tee is too far (and uphill)

The 9th green is too far from the clubhouse.

The additional holes are not shown.

The playing field and multi-purpose courts are too far from car parking.

The entrance at the corner of Dacey and South Dowling is too near to busy traffic.

There is no detail about the 18 hole mini course.

## **MOORE PARK SOUTH – DRAFT ESTABLISHMENT PLAN**

**Name:** Name withheld 16

**Date received:** 10 November 2025

---

I have been a member at Moore Park Golf for seven years. I play every week, often with friends and family, and it has become a central part of my physical, mental, and social wellbeing.

Moore Park is one of the few truly public and affordable golf courses in Sydney, where people of all ages and skill levels can enjoy the game. It is a place where beginners, seniors, and families can learn, practise, and play together in a safe, welcoming environment. Courses like this are vital for keeping the sport inclusive and accessible, particularly in a city where private club memberships are unaffordable for many.

I strongly oppose the proposal to reduce the course to 9 holes. My key concerns are: The golf land should be used to maximise playable holes and public access, not reduce it. Reducing to 9 holes is short-sighted and unnecessary, particularly when the existing footprint can accommodate a full 18-hole layout.

The current draft design lacks innovation, safety, and imagination. It doesn't reflect modern golf course planning or the needs of Sydney's growing golf community.

Moore Park Golf welcomes over half a million visitors annually, contributing more than \$17 million to the local economy and providing health, social, and community benefits that extend well beyond golf.

The proposed non-golf elements, such as new car parks and playgrounds, are poorly located, unsafe, and fail to recognise that these amenities already exist nearby in surrounding parklands.

I have nothing against green space, I value it deeply ,but when you look at a map of the area, it's clear that Moore Park is surrounded by vast parklands, many of which are underutilised compared to Moore Park Golf. The argument that Sydney needs more, parkland in this location simply doesn't hold up when so much open space already exists.

Furthermore, with the city's growth and infrastructure projects like the Metro line, public leisure facilities near the CBD will only become more important. Moore Park provides exactly that, an active, inclusive, and sustainable use of space that serves the broader community, not just golfers.

I respectfully ask that the NSW Government:

Retain the full 18-hole layout, designed in collaboration with qualified golf architects to ensure safety, innovation, and long-term sustainability.

Work with the golfing community to deliver a plan that enhances public access and participation rather than diminishing it.

Recognise Moore Park Golf's proven community value, supporting it as a model of inclusive, healthy recreation within Sydney's inner city.

Thank you for considering my submission.

**Submission  
No. 254**

**MOORE PARK SOUTH – DRAFT ESTABLISHMENT PLAN**

**Name:** Name withheld 17

**Date received:** 22 November 2025

---

Moore Park should remain a 18 hole golf course

## **MOORE PARK SOUTH – DRAFT ESTABLISHMENT PLAN**

**Name:** Name withheld 18

**Date received:** 23 November 2025

---

I am lodging this submission in support of retaining the Moore Park Golf Course as a shortened 18 hole golf course.

I have been playing golf at Moore Park for nearly 35 years, regularly meeting and mixing with a wide range of people both during my busy working career and now in my retirement. It is a vital place for me to socialize and is most helpful in maintaining my physical and mental health and social connections.

As a retiree Moore Park is the only genuinely affordable 18 hole championship golf course available to me in this area. All of the nearby Eastern Suburbs courses are expensive, exclusive and beyond the financial reach of most residents and each club has long waiting lists for new members.

Access to a park alone does not address the crisis in mental health, loneliness and isolation. Golf however offers the rare opportunity for people to mix with their local community, get exercise and form long term friendships. These benefits are mostly not available inside a park for people living on their own and feeling isolated.

Having a shortened 9 hole golf course will significantly restrict the available usage, being estimated around 60% less capacity. So the benefits I have outlined above will also be significantly downgraded.

I wish to note my support for the alternative submission made by Golf Australia and other experts for a reduced and reconfigured 18 hole golf course. I support this alternative proposal as it provides the benefits of the Premier's desire for more public access to this area while continuing to generate enormous income for Greater Sydney Parklands for them to expand and improve access to green spaces throughout the Sydney Basin.

Over 100 years ago the golfing community developed this affordable golf course specifically for the use of the then working class local residents. The NSW Labor Premier has the opportunity to continue honoring this fine community ideal.

In contrast to the NSW Premier's lack of long term vision, the South Australia Premier is totally redeveloping a public golf course in Adelaide to provide an important public access asset to the community while promoting Adelaide to international visitors. We know Sydney offers fantastic views everywhere for overseas visitors, however in terms of affordable golfing experiences, with fantastic views so close to the city centre, nothing compares to those available at Moore Park golf course.

## **MOORE PARK SOUTH – DRAFT ESTABLISHMENT PLAN**

**Name:** Name withheld 19

**Date received:** 13 November 2025

---

I am writing to oppose the proposed changes to Moore Park and to advocate for retaining the existing 18, hole Moore Park Golf Course in its current form. The plans represent a poor use of taxpayers' money and risk undermining a well used community asset.

Furthermore, the guided submission form did not provide any avenue to object to the whole proposal and keep the Moore Park Golf course at 18 holes, so was a biased and unfair submission

Retain the 18, hole course

Moore Park Golf is one of the few affordable, accessible 18, hole public courses in inner Sydney, serving juniors, seniors, social players, and clubs.

Moore Park is the premier PUBLIC golf course in the state and is used by many golfers who cannot afford to pay membership fees elsewhere.

Reducing or reconfiguring the course would diminish capacity, quality, and safety, displacing regular users and competitions.

Value for money and fiscal responsibility

The proposed works require substantial capital and ongoing maintenance, without clear, evidence, based demand or cost, benefit justification.

High capital costs for earthworks, redesign, demolition, and new infrastructure lack a transparent cost benefit case and risk long payback periods.

Prioritise maintaining and improving existing facilities rather than expensive reworks that duplicate nearby open space options.

Allocate funds to proven needs (path maintenance, lighting, safety, tree health, irrigation efficiency) rather than costly demolition/rebuild.

To spend \$50m of taxpayer money on such a folly is irresponsible to say the least

Demonstrated usage and community benefit

The course, driving range, and clubhouse have high participation rates day and night, including earn, to play programs and school use.

User fees and venue operations offset costs; removing holes risks reducing the viability of the whole golf course.

Oppose any reduction or reconfiguration of the 18, hole course.

Support targeted, low-cost upgrades that improve access, safety, and environmental performance without removing holes. There is an abundance of park lands in the area without having to needlessly carve up a perfectly good golf course.

## **MOORE PARK SOUTH – DRAFT ESTABLISHMENT PLAN**

**Name:** Name withheld 20

**Date received:** 21 November 2025

---

Some thoughts on a submission from Clover Moore to the Government some time ago...

When parkland at Moore Park was allocated for a nine-hole golf course back in 1913 and later extended to 18 holes in 1922, the surrounding land uses were predominantly industrial.

This allocation of land showed great vision by those charged with looking after the interests of their citizens. And I believe that they didn't give the land to any level of Government, but to the people of Sydney. If that is correct, do you even have the authority to take it away from the very people to whom it was pledged.

It has been the policy of successive State Governments since 1995 to convert the former South Sydney industrial area into the Green Square Urban Renewal area, and by 2040, up to 80,000 more people will be living in the area within two kilometres of Moore Park.

Firstly, I do not believe it has been the policy of all state governments since 1995 to convert the course as it would have already been completed by now were that the case. I do, however, believe that it has been the policy of a group within the City of Sydney Council, led by one Clover Moore, to vandalise a valuable public asset for no great gain to the constituents.

Statistically, of those 80,000 people you mention, approximately 10% to 15% will play golf as their sporting and/or leisure activity of choice. A single golf course can accommodate approximately 2,000 individuals, in groups of 4, in a week if it is fully utilised, as Moore Park Public Golf course is. Additional groups are catered for in the early morning to play a shorter 9 hole round before work. What that means is that the Minns government (and CoS council) are already underservicing a significant number of the constituents you are elected to represent. For so many people, you need a second course, rather than a reduction to the existing excellent facilities.

The choice of golf as a leisure activity is due to many factors including age as older folks are not as resilient, in general, as younger folks. So Football, Hockey, Basketball, Volleyball, Tennis, as examples are more hazardous as we age. Golf is not and provides for sport and relaxation as well as exercise for those of us who are getting on in years. I play at Moore Park and can attest that many, not all, but many of the patrons are 70 years of age or greater (myself included). Their choice of leisure activities has now been essentially eliminated unless they can afford the extreme fees of many of the nearby golf courses that you so ably point out as options.

There is also a significant junior golf program run via the Course to create the golfers of tomorrow. Many come from the social housing around the area, so their chance of playing

their chosen sport at one of the courses you wish us to use is negligible to zero. You have effectively eliminated this avenue to them altogether. Believe it or not, players like Jason Day started out playing their local Public Courses, which will now be denied to the younger generation with aspirations in that area.

The City is creating 40 parks and playgrounds as part of Green Square Urban Renewal, but small parks don't provide the same opportunity for people living in high-density apartments to stride out, de-stress, renew or commune with nature.

For generations, much of the land originally set aside for parkland at Moore Park has been alienated for other purposes. Large areas have been dedicated to professional sporting codes. This is in addition to sports and athletic fields, tennis courts, outdoor fitness areas, a cricket centre and pitches and the 18-hole golf course. Parkland was also lost to the Eastern Distributor and the Supacentre and there has been ongoing alienation from car parking on parkland.

When the planning was done for those facilities that are mentioned, where was the planning process? It can't now be a surprise that there will be a large population in the area, as noted by your own documentation, the increase has been planned for years. Where have you been? Where have successive governments been in these planning processes? It is somewhat of an insult to even mention that argument as a reason to proceed with this project.

I would also add that it is very hard to de-stress in almost any park in Sydney as they are generally overrun with dogs and their less than attentive owners. I used to take my grandson to Sydney Park to enjoy that facility, but free roaming dogs make it hazardous, even in the areas marked as dog free. It is not enough to mark an area as free of dogs, it must be policed, or dog owners ignore the signs. Good examples would be the wetland area of Sydney Park where owners encourage their dogs to run through the stepping stones and water. Erskineville Oval is another example after 18:00 particularly where you must walk past at least 2 signs warning that dogs are not allowed on the playing surface. As it isn't policed, take a look after 18:00 sometime.

The City of Sydney's strategic plan Sustainable Sydney 2030-2050 Continuing the Vision includes The Green City project idea of unlocking existing Crown Land at Moore Park for wider public use.

Are there any other sports being affected by these decisions? There are large numbers of fields for many other sports in your purview, eg, right at Moore Park Golf Club entrance there are several tennis courts that get moderate to low usage, and those right next to a large field that gets used as an overflow carpark very rarely I might add. The adjoining AFL field is also seldom used. Why would these not be considered for reclamation? What costs are incurred with these other facilities? I note that Perry Park on the corner of Bourke and Maddox has undergone a significant upgrade, as well, the multi-purpose facility for basketball and volleyball was recently increased massively, and at great cost to the ratepayers and taxpayers. These also need to be maintained into the future, at great cost to the ratepayers. How does that compare to the golf course that is not only almost fully utilised every day, but also pays for itself, and contributes a significant part of the costs to run the Centennial Parklands? Are these costs to be borne by the ratepayers after the golf course is changed from a championship course to a novelty course? Or is the NSW Government going to put the burden on the taxpayers of NSW?

I'd also ask, if you want a large park in Waterloo, why was the very large block of land on the corner of McEvoy Street and Bourke Street sold to developers? It is right where you want a

park and was already in government hands.

In built-up inner-city areas where land is expensive, is an 18-hole golf course the best use of precious public parkland? The question is fundamentally one of equity and putting public land to its best use in the community interest.

So on that line of logic, is any publicly sponsored sporting facility putting public land to its best use? Why stop at sporting facilities? I don't go to the theatre or to galleries and museums, so I could reasonably object to any of my rates and taxes being used for those purposes, but I don't because there is a percentage of the population who love those things elitist or not - and are supported by both Council and Government.

Does the NSW Government or the CoS charge the Eastern Suburbs Football Club to use a large section of Moore Park for their football training sessions during the NRL season? Again, I don't mind it, because when they are using the site, there are almost no people using the park, as is the case pretty much the rest of the time. In fact, the only time I can recall any major use of that section of park was during Covid when we were allowed to picnic for short durations. Aside from that, it is a grassy desert that could support significant tree planting to better improve the air quality and shade creation for the city.

The golf course is used quite heavily 7 days per week which more supports the argument that it is, in fact, at the very least good use of public land because the public do access it so often. The same cannot be said about Moore Park, Queens Park, or even Centennial Park itself. These large areas are largely empty of the public 5 days per week as a minimum. Rather than large open spaces, why not plant forests across these parks and at least contribute to carbon being removed from the atmosphere and stored indefinitely in those forests.

The City's proposal to convert the existing 18-hole Moore Park Golf Course to a nine-hole facility retains the popular driving range, club house, and maintenance depot and requires minimal reconfiguration of the fairway and greens.

The City's proposal is a vandalism of a fabulous facility that brings people to the city. The current 18-hole championship course is a magnet for corporate golf days and tourists. When the facility is diminished to a 9-hole novelty course, that will no longer be the case. No-one travels to play golf on a 9-hole course, and no corporate golf days are held on 9-hole courses.

Whilst the Driving range will still provide funds, the memberships and green fees will be a much smaller return from what is received today. Once the course becomes less viable, because of these changes, there will be increased pressure to even get rid of the remaining course, which will result in pressure to develop parts of what is a very good asset to the city. NB: It is only an asset if you choose to view it so, rather than an elitist facility for the rich. Check the car park someday and you'll see that the rows of Porsches, Mercedes and Bentleys don't exist. The carpark will reveal many Volkswagens, Toyotas, Subarus, Hyundais and Kias. The rich do not join and play here; they play at courses that are far and away too expensive for the majority who call Moore Park Golf Club their home course.

When we asked the community what they thought of our proposal in 20nn, unsurprisingly, people living immediately to the west of the course in areas like Redfern, Waterloo and Zetland were overwhelming supportive of reconfiguring the course to create public parkland.

Did you also ask if they wanted to close anything else? Footy fields, theatres, Museums etc? Specific targeting of the golf course is populist politics at best, and unworthy of the

Minns Government.

Golfers, especially from the eastern suburbs, opposed the change despite that there are 12 other courses within 10km of Moore Park and that the proposal retains nine-holes and the popular driving range.

There may well be many other courses within that radius, but how many are affordable to your constituents? And how many of the public courses offer the quality and challenge of Moore Park? I'm from west of the course and I am not alone. I joined the course in 2022, after the last time you tried to justify the damage you want to create, because there was at least some signal that there was a longer life ahead. That this now turns to dust is shameful in the extreme.

A championship quality golf course is a major city asset. That virtually nothing is spent on improving the course, rather than just maintaining it, is a major oversight. If money were allocated and spent wisely, this course could easily host major championships, such as the Australian Open, The NSW Open, and possibly LIV golf who are looking for exposure for their events, and would showcase the city along with the assets it offers.

On 22 October 2023, following the City's advocacy supported by Business Sydney and former Premier of NSW, Bob Carr, the NSW Premier Chris Minns announced plans to convert up to 20 hectares of the Moore Park Golf Course into publicly accessible parkland when the current operating agreement expires in 2026.

What would Bob Carr say if you said you no longer supported the theatres or galleries you currently do? He is not representative of the whole community (neither is Chris Minns) rather a mouthpiece for a select, and elitist, slice of the general populace. If you don't think Bob Carr elitist, just read his book.

I thank and congratulate the Premier for accepting the City's proposal. It is important for growing, densely populated communities to have access to parkland.

No-one disagrees with a need to provide adequate facilities for your constituents, however, the manner in which this is being done will be remembered as part of a shameful legacy well into the future. There are options on the table that satisfy not only the needs of the golfing community AND the requirements outlined by both the CoS and the NSW Government. That these alternate plans are being ignored is somewhat disgraceful.

The NSW Government will conduct public consultation and release a discussion paper to guide that consultation, including with the current operator of Moore Park Golf Course on the future of the remaining holes and the operation of the clubhouse and driving range.

Public consultation is valuable only if you listen and act on the inputs. By your own documentation greater than 50% of the public are in favour of an 18 hole course, yet, with credible alternative plans on the table, you choose to forge ahead with the destruction of a valuable State and City Asset. That is shameful

It is imperative that the City of Sydney encourages local residents to get involved in this consultation and have their say on the future of this public parkland.

The imperative is that Clover Moore wants to be seen to be doing the right thing, but the reality is it is a waste of time and money. Again, shame on you Clover Moore, and shame on Chris Minns if this proceeds..

Harking back to the original allocation of land at the start of the 20th century..  
If those who made the allocation back in the early 20th century had the vision of today's politicians, we would probably still be crossing the harbour by punt.

## **MOORE PARK SOUTH – DRAFT ESTABLISHMENT PLAN**

**Name:** Name withheld 21

**Date received:** 11 November 2025

---

The Moore Park South Establishment Plan is a poorly conceived and politically charged act of vandalism against the broad and diverse community of inner-city golfers and will obliterate a shining asset for the City of Sydney.

Golf is a sport and activity that is accessible across the full spectrum of demographics, ages, cultural backgrounds, and economic classes. Nowhere is that more the case than at Moore Park which is the most substantial public access facility located within the vicinity of the CBD of a capital city in Australia. Moore Park Golf Course provides avenues for children, women, culturally diverse communities, ageing people, and various other sections of the community to develop skills, and a community, and undertake healthy organised activity in a welcoming environment.

The proposal is one that is overtly cutting off the nose of the City of Sydney to spite one face. There is an abundance of parkland within the vicinity, significant tracts of which are severely underutilised, particularly in Moore Park East and Moore Park West, both of which could undertake development of this kind to achieve the same goals without having the same adverse impacts on a valued (and profitable) community asset. Furthermore, the vast expanse of Centennial Parklands are less than 20 minutes' walk from the residences of South Dowling Street.

If it was the case that it was irrefutable that new parklands were required in the space that was currently occupied by the Moore Park golf course, it would make significantly more sense to create the parklands on the land south of Dacey Avenue on a self-contained section of land, rather than splitting the golf course across 2 properties. In this case, the golf course could possibly utilise some of the land near Mount Steel and the Bat and Ball Oval. Even if more land was not made available, keeping the golf course on the same section of land north of Dacey Avenue would present the best opportunities to optimise the golf course offering despite the compromised space. The decision to determinedly excise land north of Dacey Avenue rather than south transparently demonstrates that this action is not about improving parkland but is instead about vindictively obliterating the golf course. The result will be the slow death of the Moore Park golf course and with it will further entrench the lack of availability for golfers of less economic means, those starting out in the game, essentially the less represented groups that the council and state government should be providing more opportunities to rather than closing those opportunities down. This is nothing more than a shameless attack on a pastime that carefully nurtured is available to anyone from any background and of any age.

## **MOORE PARK SOUTH – DRAFT ESTABLISHMENT PLAN**

**Name:** Name withheld 22

**Date received:** 13 November 2025

---

More than half of the people on the last submission want to retain the 18 hole course, leave it as it is. Why is this being ignored? Is this a democracy?

The existing 18 hole golf course is PUBLIC. That means it's all of ours. It is cheap to use for a golf course. How else can people who are not members of expensive private course and live nearby play one of the world's finest games. It is a national treasure. Loved by many. A beautiful green lung in the middle of Sydney.

Once the government gets its hands on it, the next thing you know it will be handed over to developer mates for more dogbox apartments.

Total greening will be reduced by a park overrun with dogs and paths and cafes and tracks. The suggested park is adjacent to an existing park, which is scarcely overused and hard to get to. This is not a new park, it is an extension of an adjacent one. The suggested park extension will be on one of the busiest and least accessible corners in Sydney. Noisy, full of car fumes. On a corner at the intersection of freeways!

This is a disgraceful destruction for political gain. Minns to appease Greenwich to make Clover look good because the developers got all they wanted and inadequate parks over at Green Square and Zetland. It is also an attempted ALP political dogwhistle - anti LNP - because white middle aged men are associated with golf and the LNP. This is not only a disgraceful reason to waste money and destroy a national treasure, it is hopelessly misguided because all and sundry and many tourists play golf on Moore Park Golf Course.

Who will pay for these parks when the revenue to maintain them is reduced? Anyone think that through? Clearly not. Anyone care? No run up the state debt further before being voted out of office.

## **MOORE PARK SOUTH – DRAFT ESTABLISHMENT PLAN**

**Name:** Name withheld 23

**Date received:** 24 November 2025

---

I am a resident of Rosebery.

We are extremely well serviced by well sized local parks, but more remote from places of regional active recreation.

Sydney Park is a fantastic park but is challenging to access as a pedestrian without a bracing walk through an industrial area and several, heavily trafficked arterial routes. The Moore Park works are of strong interest for this reason.

It would be great if you could consider the following as the plan develops.

### Access

The park is highly dislocated from residential areas by the aggressive, high-speed corridor of the Eastern Distributor. Additionally, for residents of Rosebery, captured in your 5km map of intended users, it is dislocated by O-Dea Avenue, Lachlan Street and Dacey Avenue. These are significant impediments to reaching the park on cycle or foot. Much greater consideration should be given to how people can access the park safely and comfortably and should be embedded in the Establishment plan.

Is it possible to consider using some of the southern portion of the golf course for park that makes the park less of a challenge to reach for people living in the south of the City? Could there be a portion of the southern area included as parkland that facilitates an access from Todman Avenue, or through the streets to the south?

This would ensure that accessibility was more balanced for the suburbs nominated in your 5km catchment map.

I note that there is an intent to work with Transport for NSW to improve access but it is important that explicit principles and actions are included in the Establishment Plan to ensure that Transport does not simply overrule the objectives for traffic.

### Long Term connectivity

Utilising the southern portion of the golf course would be more strategic in facilitating a decade's long-term strategy that could see extension into the Australian Golf Club lands and Botany dams as a substantive urban wildlife corridor.

This would be more consistent with State Government Blue-Green Grid policy, rather than enshrining the southern portion of the site as a barrier.

North south continuity should be preserved across the entire site.

Perimeter loop

The idea of a long walk in a natural setting is highly attractive. The location of this walk alongside the most aggressive arterial interfaces is not attractive. Much of this is concentrated on the noisiest, most polluted interfaces.

Framing walks that can take us away from these corridors would be more desirable and appropriate.

Working to change the character of Dacey Avenue, so that it is not such a brutal traffic-oriented interruption to the north south connectivity of the corridor is also important.

First Nations

The Draft Establishment plan notes that it has embedded First Nations People's connections with country. There is little explanation or evidence of that in the plan.

First Nations peoples' values would ideally drive its understandings, structure and site response.

If they have done so, it would be important to elevate this in your Establishment plan. UNSW Research often publishes very interesting maps and readings of this part of Sydney in their , Swamp City' Instagram account. This much broader understanding of the systems that this park could link to would be fundamental to Country, and good contemporary urban practice.

Golf

I do not play golf, so golfing uses on the site are not personally important to me. I do support a park that is plural in nature and allows many sorts of recreational activities to coexist.

Thankyou for the opportunity to review this draft plan.

## **MOORE PARK SOUTH – DRAFT ESTABLISHMENT PLAN**

**Name:** Name withheld 24

**Date received:** 24 November 2025

---

I am writing to voice my utter dismay at what I consider to be an ill-advised and grossly negligent decision from the NSW government to cut Moore Park Golf course in half and turn it into a 9-hole course.

Moore Park Golf Club is an iconic public sporting facility has been enjoyed by generations of Sydneysiders and visitors to this great city for over 100 years. It has fostered community, given people the outdoor space they need to stay fit and healthy, both physically and mentally, and provided a fantastic facility for people to learn, enjoy, and challenge themselves against the highest growing sport in Australia. In my opinion, Moore Park is of great cultural significance to the city of Sydney. To the many thousands of people who enjoy playing 18 holes of golf at Moore Park year upon year, ripping up this heritage for yet another park project is a complete betrayal of the public.

Moore Park Golf Club is a public facility, not a private golf club that definitively excludes people. Over 60% of the tee times at Moore Park are for public use, and I find the government's rhetoric about this club being for the elite in society absolutely appalling. The club's membership is made up of people from all types of backgrounds - men, women, and children from all corners of the world. It is a club where everybody is made to feel welcome regardless of where they grew up, the colour of their skin or what their golfing ability is. This is a golf club that should be celebrated for bringing people together, a real Sydney success story for all the right reasons; it is certainly not an exclusive club for the rich and wealthy.

From a personal point of view, since joining Moore Park Golf Club in 2018, my life in Sydney has improved immeasurably. I have made an incredible number of friends here and consider the people at the golf club to be my closest mates in Australia. My physical and mental health have seen significant improvement too - walking the 18 holes of this course has given me the time and the headspace to love the great outdoors again and enjoy the fantastic outdoor life that Sydney offers. I have become ingrained at the club in my time here, managing teams at inter club events, caddying for the major pennants team and giving up time to volunteer at amateur events at the club. There is a real community of like-minded people here, going out of their way for each other and working for the greater good of the club.

Moore Park should also be celebrated for its accessibility to public transport, with buses and the light rail making it connectable to the train line through Central station. No other golf club in the Sydney is anywhere near as accessible as Moore Park.

If Moore Park was to be torn in half, I would absolutely have to consider joining another golf club and this will come at a large expense to me, both financially and through the loss of many great playing partners I have shared the course with. Moore Park offers a reasonably priced experience to me, \$2,500 per year. Comparing this to the other courses in the area it is significantly more affordable, where prices range from \$6,000 and upwards. And this doesn't include the sky-high joining fees that clubs are charging in 2025/26 - \$5,000 to \$35,000. The greatest irony of this proposed park plan is that it's actively pushing the game towards becoming an elite sport by making it unaffordable for people to be members at 18-hole golf clubs.

Onto the proposed plan, which is flawed on so many levels it beggars' belief that it has made it through to the public domain. It's clear to me by the extremely poor planning decisions that have been suggested that it hasn't been worked upon by anybody that understands golf or what it means to plan a park next to a golf course.

Safety concerns:

The netting on the driving range is unfit for purpose in this plan. Nobody should be sat having a picnic with the threat of a golf ball travelling at 150mph flying towards them. The netting will have to be completely replaced at a significant financial cost to the public, even more so with the addition of a further 30 bays facing directly towards the grassy picnic area. On the right-hand side of the newly proposed first hole, again, there is an enormous safety risk to the public. Netting will have to be installed the entire length of that hole to keep the public safe. Huge financial cost to the public again, where is this in the plan?

An extra car park off of Dacey Avenue. This one is unbelievable. How dangerous to place a car park so close to one of the busiest junctions in Sydney. This will cause a traffic nightmare along this road with people waiting to turn into the car park whilst travelling west along Davey Avenue, incredibly dangerous.

Poor Design:

The new layout places a 9-hole design into a space that currently occupies 12 holes. What a waste of space, I can't believe this was signed off and presented to the public as the best use of the land.

The plan proposes 30 extra bays on the driving range. Where is the provision for extra car parking space to facilitate the extra traffic that this will create? This hasn't been considered; has it even been thought of?

Lack of Imagination and Innovation:

The sports facilities that are planned in the park - a bike track, walking trails, sports field, basketball courts. Every single one of these activities are already available in Centennial Park, which adjoins Moore Park Golf Club. How is it even conceivable to rip up 100 years of history to replace it with facilities that already exist in the local area? This seems like utter madness to me and shows a distinct lack of innovation and imagination from a design point of view.

On top of all the above concerns that I have raised with the design, I am appalled that the community consultation, which has clearly shown that there is no appetite for ripping up the golf course and replacing it with more parkland has been completely ignored. The

government continues to say this is a done deal.' What is the point in asking local residents their views on matters if they have no intention of listening to them? Why waste people's time?

The alternative plan produced by Moore Park Collective has also been completely ignored. This plan offered a fantastic compromise and was produced in good faith. It retained an 18-hole layout whilst giving 20 hectares of land for public use. I am astonished that the government hasn't even entertained this design and has come up with something that is so incredibly unfit for purpose.

The biggest concern of all that I have though is the financial cost of this proposed project. I have seen the figure of \$50million quoted by the NSW government. Frankly, they are living in an absolute fantasy land if they think this can be achieved for that figure. Why are we not being shown the business case that supports this cost analysis? Why are the government ignoring the original costing that came through at \$245million and trying to convince the public that it will be done for a fifth of the cost? Where is the transparency for the people of Sydney? It all suggests that we are being lied to by our elected officials, and I find this particularly concerning from a government that promised to be held to account and transparent with the public.

Thank you for your consideration of all the above points I have raised.

## **MOORE PARK SOUTH – DRAFT ESTABLISHMENT PLAN**

**Name:** Name withheld 25

**Date received:** 24 November 2025

---

I live in Eastlakes, and I have been using Moore Park Golf for 40 years. I visit to play at Moore Park golf course once if not twice a week. I have also been coached over the years. Moore Park Golf is important to me because being a Public Golf course it was the first ever golf course I gained access to and like many juniors discovered my love of the game at this golf course.

Golf at Moore Park has been a wonderful source of social interaction for my self over the years. Provides a great way to meet new people and help keep my own mental health at a high level.

I am very concerned about the proposal to reduce the course to 9 holes. In my view:

The golf land should be used to maximise the number of playable holes and public capacity, not reduce it.

The current design lacks innovation and imagination and in some areas is clearly unsafe to public. It does not reflect modern public golf planning.

Golf participation is growing, and Moore Park is one of the few affordable public courses accessible to everyone in Sydney.

There is no option with the provided response to vote for no change which should be an option to provide a balanced response.

I respectfully ask that the NSW Government:

Works with the golf community and leading golf architects to design a layout that maximises playable holes, safety and community access.

Delivers a plan that supports the booming public golf community, not reduces it.

Delivers public access golf to greater Sydney for many years to come.

Thank you for considering my submission.

## **MOORE PARK SOUTH – DRAFT ESTABLISHMENT PLAN**

**Name:** Name withheld 26

**Date received:** 10 November 2025

---

I would like to provide my objection and feedback on the Moore Park South proposal.

Bring in qualified golf architects and retain 18-holes

The proposed redesign of Moore Park Golf Course fails to make full use of the available land and risks reducing an important public facility to a limited 9-hole layout. This would unnecessarily restrict access to the game and undermine community participation. Golfers will be unlikely to continue to play on a 9-hole course so the course will lose members and the public. There is ample room to retain a 18-hole course and still provide excellent facilities for the public.

Lack of innovation and poor safety

The draft design shows little innovation, lacks safety and efficiency, and appears to have been created without input from qualified golf architects. In contrast, comparable 18-hole courses exist on smaller sites using modern, flexible design approaches.

Community asset and healthy leisure pathway

Moore Park Golf Course is a vital community asset, As it serves more than 500,000 visitors a year, generates significant local revenue, and promotes health, inclusion, and recreation. Drop by the course on any day and you will see the broad range of people using the course and its facilities. Moore Park Golf Course provides a pathway for children and adults to learn, practice and then play on a championship course. The course not only enables men to learn and participate in golf, it introduces women and children to the sport.

On a personal note, I began golf lessons at Moore Park five years ago. I then progressed to playing the course and joined the club where I have made many friends and continue to play multiple times per week including inter club competitions. There is no comparable option for me if Moore Park is reduced to 9-holes. The golf clubs in the 20 km vicinity of Moore Park are private with long wait lists and prohibitively high joining and subscription fees.

With public golf in Sydney already scarce and demand rising, cutting the course to 9 holes would drastically reduce capacity and harm both players and the wider community.

Generational Mistake

I urge the government to reconsider this proposal and avoid making a generational mistake. The Moore Park Golf Club established in 1926 is a vital community asset. It will not retain its high use if it is reduced to 9-holes. Future governments may then be tempted to reconsider its use and build apartments on the land thereby removing the space for public use.

## **MOORE PARK SOUTH – DRAFT ESTABLISHMENT PLAN**

**Name:** Name withheld 27

**Date received:** 25 November 2025

---

Thank you for the opportunity to make this submission.

This issue is deeply personal to me, as it is for tens of thousands of people who rely on Moore Park Golf Course as their only accessible, affordable, and welcoming sporting community. But I also come to this process with a professional understanding of how major public-asset decisions should be made. I previously served as an Executive Director at NSW Treasury, overseeing complex economic appraisals, business cases, and value-for-money assessments. I've also led precinct planning work inside government, and I understand design, land capability, and how policy decisions play out on the ground.

And on the ground is where this Establishment Plan fails.

Over the past two years, the Moore Park Golf Collective, which I have led, has not opposed change. In fact, we've championed it. We've put forward multiple proactive solutions. We've shown, in detail, that it is possible to deliver new parkland, new recreation, better access, a stronger precinct, while also retaining an 18-hole public golf course. We've taken a YIMBY approach: yes, to more open space, yes to better public amenity, yes to a more activated Moore Park South.

But what I cannot support is a plan that doesn't work, not economically, not socially, not physically, and not safely.

And the Government's own Full Business Case, released under SO52, confirms exactly that. The Business Case Leaves No Doubt: The Best Option Is to Maintain 18 Holes of Public Golf at Moore Park.

The Full Business Case is not a political document, nor a community engagement tool. It is the one place where the Government is required by process, by Treasury, by INSW, to tell itself the truth.

The truth is blunt:

None of the project options offset the project capital investment nor achieved socio-economic returns that were better than the Base Case.

In plain English:

Every single redevelopment option is worse for the people of NSW than doing nothing.

The Base Case, retaining the full 18-hole public course, has an extraordinary Benefit, Cost Ratio of 2.4, and an NPV of \$272.6 million.

That is almost unheard of for a public sporting facility.

This means Moore Park Golf Course is not just a good public asset, it is one of the highest-performing public sport and recreation assets in the country.

Meanwhile, the Government's preferred approach the Establishment Plan with a 9-hole course is not only worse than the Base Case, it is not even modelled in the Business Case at all. All options tested in the Business Case retain 12 holes, not 9.

The Government is asking the people of NSW to support a plan that has never been economically evaluated, never been risk-tested, never been modelled and completely void of defined and measurable community outcomes and benefits.

As someone who has led major public-sector appraisals, I cannot overstate how extraordinary and how concerning that is.

As is common practice with this type of work and following the directions of NSW Treasury and INSW the Business Case analysis used a longlist/shortlist options-elimination methodology.

Options that significantly reduced golf were progressively eliminated because they:

- delivered lower economic value
- increased utilisation risk
- threatened GSP's financial sustainability
- required disproportionate capital
- produced poorer health and social outcomes

In other words:

Lower-golf options failed the Government's own filters and were discarded.

The Establishment Plan tries to revive the very options the Business Case eliminated.

The Costs Are Enormous. The Benefits Are Weak. The Funding Isn't There.

The Business Case makes this crystal clear:

The Establishment Plan concept would cost nominally up to \$218.5 million to build.

The new park component alone requires \$160 million.

Only \$50 million has been allocated by the Government.

That leaves a \$168.5 million funding shortfall, guaranteeing an under-built park that cannot deliver its intended benefits.

And here's the kicker:

The Business Case says that unless the Government invests the full \$160 million, the park will be underutilised, delivering significantly lower benefits, and creating a greater opportunity cost.

So, as of right now we are left with the worst of all worlds:

A greatly diminished golf course  
A park that cannot succeed  
A severe financial risk to GSP  
Tens of millions in lost economic value  
A project that the Business Case openly says will likely fail

No responsible government or minister could read this document and proceed with the current Establishment Plan. I am also bewildered that Treasury and Infrastructure NSW have let it get this far!

The Land Is Not Suitable for the Park the Government Is Promising  
This is the part of the conversation that has never been honestly addressed.  
The land the Government wants to convert is:  
Noisy  
Wind-affected  
Exposed  
Surrounded by high-speed roads  
Difficult and unsafe to access  
Too steep and undulated to function well as a community park

The Business Case itself acknowledges that:  
The difficulty of access to the Site is widely recognised and acknowledged.  
If too challenging to access, benefits could be materially unrealised.  
This echoes the concerns I raised in my 2024 submission, where I observed that almost none of the people who live in Green Square the very people the Government claims this park is for will be able to reach it safely or conveniently on foot.  
You cannot build a central park, in the middle of a traffic island bounded by six lane roads with high-speed offramps.  
You cannot build playgrounds on spaces with constant noise equivalent to standing next to a lawn mower.  
You cannot build a soccer field on the top of a hilly, former rubbish tip with likely asbestos deposits.  
You cannot rely on ,community utilisation, of land that is fundamentally unsuitable.

The Proposed Golf Layout Is Unsafe, Unprofessional, and Unworkable  
I say this as someone who has walked every metre of this course for years, who understands ball-flight patterns, landing zones, and safety envelopes, and who has had the layout reviewed by some of the best golf course architects in the country.  
The 9-hole design in the Establishment Plan is not just flawed, it is dangerous.  
The plan ignores topography entirely.  
Safety setbacks are below the industry minimum of 65m.  
Landing zones overlap and are blind to the person hitting the shot.  
Dead-end wedges, place pedestrians in direct danger.  
High-traffic paths run through active golf areas.  
A par-3 is drawn with a completely fabricated dogleg.  
Existing safe par-3s are inexplicably removed.  
The 9th hole is aligned in a way that will cause constant strikes toward the loop track.

This is not a golf course. This is a drawing designed to fit a political narrative, not a safe and functional reality.

## Who Uses Moore Park? The Government Still Hasn't Answered This Question

One of the most troubling aspects of this process has been the absence of meaningful analysis about the people who use Moore Park Golf Course today, and the people who will need it tomorrow.

Moore Park is not a sanctuary for elites like the Mayor Sydney likes to claim.

It is: kids teenagers, families, seniors, women, beginners, lower-income households and people who cannot afford expensive alternatives, visitors to Sydney, and all these people, and more, who rely on golf for their mental health, physical wellbeing, and community connection.

As I said in my 2024 submission:

Public golf courses changed the trajectory of my life.

They gave me purpose, structure, resilience, friendships that lasted decades, and values that ultimately led me into leadership roles in the NSW Government and in the community.

I started exactly where so many young golfers start on small, modest public facilities.

From Castle Cove, a humble 9-hole course, to Chatswood, a short 18-hole layout, and then on to championship courses and junior tournaments across the country. That pathway, from small public beginnings to elite competitive opportunities, is the same pathway that has shaped generations of Australian golfers.

You can see the same pattern in every world-leading Australian professional. Their stories start the same way: a public course, a borrowed club, a single well-struck shot, a laugh with a mate, and a lifelong attachment to a game that gives from childhood through to old age.

Not everyone gets opportunities like that in life.

And those who do often get them because public golf exists, accessible, affordable, close to home, and welcoming to all.

That is why reducing Moore Park from 18 holes to 9 holes matters so deeply.

It is not simply a 50% reduction in land. It is a 60% reduction in opportunity, in rounds played, tee times available, lessons offered, juniors trained, women introduced to the game, seniors supported, and new golfers welcomed.

Taking away 9 holes at Moore Park takes away those opportunities for the next generation.

## Financial Sustainability: GSP Will Be Harmed

The Business Case states that reducing the course to a substantially reduced format exposes GSP to:

Very serious consequences

This is because:

Golf revenue subsidises the rest of the parklands

A 9- or 12-hole product is untested in this market

Construction disruption will crater revenue for years

Recovery will take 8+ years just for operating revenue

A 9-hole option would be far worse than alternates

If Moore Park Golf collapses, so does funding for Centennial Park, Queens Park, and Callan Park.

## A Better Path Forward Exists , And It Has Always Existed

The evidence points to three responsible paths:

Retain a championship 18-hole public course, the highest-value option for NSW.

If the Government and politics of the situation deliver more parkland on the corner of South Dowling St and Dacey Ave, deliver the 8-hectare + shortened 18-hole course as detailed in

Stage 1 of the preferred option.

If the Government genuinely wants more parkland for the growing population centres that surround the course, look at the spaces that are available in Moore Park South, its wider precinct, Centennial Parklands, and create better access for people to go there and experience the benefits of green spaces, something the golfers of Moore Park get day in, day out.

The debate has been incorrectly framed through our politics as parks versus golf.

The government's own Business Case actually shows the opposite: the precinct performs best when a strong golf offering anchors the site, and new parkland complements it.

This is confirmed by my own analysis over the last two years which consistently confirms that keeping a shortened 18-hole course option delivers:

higher NPV than 9 or 12 holes

lower risk

better utilisation

a more financially stable GSP

a more balanced precinct

The most successful precincts are not those where uses are cannibalised, but those where uses reinforce one another. Why are we not pursuing a logical win-win?

This Decision Will Define the Government's Legacy

This is a moment where evidence matters.

Where process matters.

Where transparency matters.

Where the lived experience of the community matters.

I ask the Government to choose the path backed by evidence, by community, by safety, by common sense, and by long-term public value:

Release the full Business Case for the current \$50m Enablement Plan

Abandon the current unassessed, unworkable and dangerous 9-hole golf concept

Commit to a minimum 33 (of 66) hectares at Moore Park South for the golf community to maximise the golf course and teaching offering

Deliver additional parkland in a way that actually works for the community and will be utilised to the level of the highly used golf offering you are taking away

Consult genuinely and openly with the community moving forward, listen to what they have already said since the 22 October 2023 and in every single subsequent consultation, media article, narrative since the question of golf at Moore Park South was raised.

There is a better way than the Establishment Plan.

It is time to pursue it.

Sincerely,

P.S. after numerous requests, I am still hopeful that The Hon. Chris Minns MP, Premier of NSW will find time to meet personally to discuss the future of Moore Park South.

With decisions at Moore Park carrying profound economic, social, physical health, mental health, and wellbeing consequences for tens of thousands of families, it is essential that we meet face to face to share how we can collectively deliver for the NSW Government and, most importantly, for the people of Sydney and New South Wales.

**Submission  
No. 265**

**MOORE PARK SOUTH – DRAFT ESTABLISHMENT PLAN**

**Name:** Name withheld 28

**Date received:** 22 November 2025

---

See attachment

I have read both the 2024 report – *What we heard* – and the proposed *Moore Park South Establishment plan* and I make the following observations:

Page 1 of the Establishment plan states:

**We have developed an establishment plan that:**

- delivers on the NSW Government’s commitment
- responds to community feedback on ‘The Future of Moore Park South’ discussion paper

This table compares the “*What we heard report*” with how the “*Establishment plan*” responded to community feedback. There is no evidence that the significant areas of the community feedback has been incorporated into this very basic establishment plan.

What we Heard Findings	What we Heard Reference snip	Addressed in Establishment plan?
<p>This was not extra or new green space – page 7.</p>	<p><b>2. Existing open space utilisation</b></p> <p>Throughout the consultation we also heard that there were <b>existing open spaces</b> within Moore Park that have low amenity, and these <b>could be improved</b> to better respond to community needs.</p> <p>There was also a view that the <b>new park does not add to the net amount of open space</b> within a growing area.</p>	<p>There is no reference to improving any other existing open spaces to increase utilisation.</p> <p>Page 2 claims it <i>Provides a new parkland</i></p> <p>It is not new, it is changing usage.</p>
<p>Barriers to accessing the space – page 8 and page 12</p>	<p><b>3. Potential barriers including access</b></p> <p>Feedback also highlighted <b>potential access improvements</b> to the busy roads and intersections bounding the Moore Park South area. Many people noted that for the park to be successful it would need to be <b>integrated into surrounding public and active transport networks</b> and that these too would need to be improved.</p>	<p>There is not even one single statement about how people will get to the “new park”.</p> <p>How do the residents in Waterloo, Zetland, Surry Hills etc travel the 3 to 5 kilometres to get to the park and then cross a very busy arterial road?</p>



### Safe and easy access to the park

We heard that the overall need was for a park that is **readily accessible by walking, bike or public transport** and that this access should be safe for people of all ages and abilities (including carers with prams, children on scooters or bikes, and people walking dogs).

There were **mixed views about providing car parking** within the new park. Some noted that a level of parking would be needed to secure access for people with disability and people with young children, while others opposed any parking as this would add to congestion and take up valuable open space that could be used as parkland.

The **challenges of crossing surrounding busy major roads** to get to Moore Park and Centennial Park were frequently raised.

Suggestions to improve access included:

- changing signalisation of intersections to favour pedestrians and cyclists
- improved walking and cycling paths around the perimeter of Moore Park South
- pedestrian overbridges
- a new cycle lane and parking along Dacey Avenue

The impact to the local community with no publicly accessible 18 hole golf offering – page 8

### 4. Potential impacts

Feedback also focused on the **impacts to golf with the reduction of the course to 9 holes**. Feedback suggested that Moore Park Golf:



Concerns were expressed that a **9-hole course may not be as attractive to players** and would result in the loss of competition status. These changes would see members leave with an accompanying **decrease in social, health and economic outcomes**. The **lack of an alternative, publicly accessible 18-hole golf course** within the eastern suburbs of Sydney was also expressed.

Golf, as it presently exists, was identified as a significant contributor to revenue for operations across Centennial Parklands. Feedback received indicates there is a need for **certainty around funding the new open space given the potential reduction in income** due to increased golf patronage.

There is no reference to where the alternative publicly accessible 18-hole golf course is located.

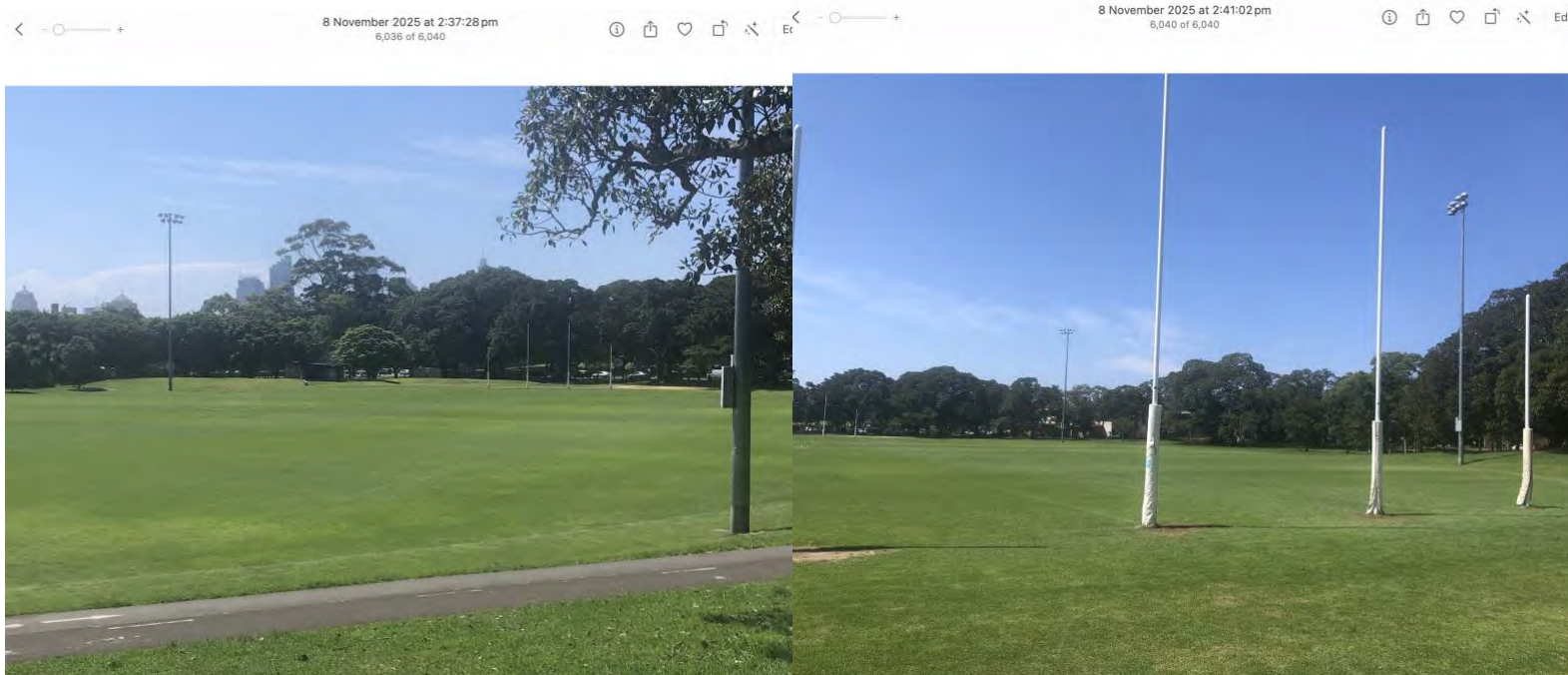
There is no mention of how the revenue shortfall for operations across Centennial Parkland is going to be addressed.

There is no acknowledgment of the decrease in social and health impact on golfers who can no longer access 18 hole golf.

<p>The need for a detailed design and business case and integration into the Moore Park master plan 2024 – page 8</p>	<p><b>5. Decision making processes and funding</b></p> <p>Many community respondents <b>sought certainty about the process</b> for creating the new park, wanting to see:</p> <ul style="list-style-type: none"> <li>• a more <b>detailed design</b> developed, and <b>business case process</b> undertaken in consultation with the community</li> <li>• integration of the new park and golf offering change into <b>Moore Park Master Plan 2024</b></li> <li>• <b>commitments to funding</b> delivery and operation of the new park</li> </ul>	<p>There is no business case provided and no reference to the Moore Park master plan 2024.</p> <p>There is no detailed design that acknowledges the significant challenges of even the topography of the site.</p> <p>Claims on page 2 that:</p> <ul style="list-style-type: none"> <li>• Restores natural landscapes, improves ecology and protects cultural heritage.</li> </ul> <p>The plan shows a playing field is located on top of a hill. This natural topography will need to be flattened to create a useable playing field. Additional car park will require the flattening of natural slopes and removal of substantial trees.</p>
<p>The need for integration with the broader parklands surrounding the course – page 9.</p>	<p> <b>An integrated and connected park</b></p> <p>We heard that the new park <b>cannot not be considered in isolation</b>. The role and function of the new park within Moore Park needs to be understood and enhanced through:</p> <ul style="list-style-type: none"> <li>• <b>better integration</b> of the broader Moore Park precinct</li> <li>• <b>improved connections</b> to Centennial Park and surrounding neighbourhoods</li> <li>• secure and safe links <b>to regional cycling and pedestrian networks</b></li> </ul>	<p>The claim is: <i>The new park will be easy to move through with paths connecting to surrounding communities and improving access to other parts of Centennial Parklands and nearby public transport.</i></p> <p>There is no information on how this will occur, where it will be located, when it will occur or how much it will cost.</p>
<p>Overwhelming heard that the priority was to retain an 18-hole golf course – page 11</p>	<p> <b>Collaborate to explore innovative ways that an 18-hole golf course and park can coexist</b></p> <p>Much of the golf related feedback supported the retention of the 18-hole golf course and called for investigation of options for an 18-hole course and community park to coexist.</p> <p>Common suggestions included:</p> <ul style="list-style-type: none"> <li>• look at <b>improvements to existing areas</b> within Moore Park along with a <b>redesign of the 18-hole golf course</b> to enable a full championship golf course and a quality community park coexist.</li> <li>• <b>regular golf free days</b> when the community can access the course</li> </ul> <ul style="list-style-type: none"> <li>• <b>accessible shared pathways</b> throughout the course</li> <li>• opportunities to <b>open the clubhouse and supporting amenities to wider community use</b></li> </ul> <p>It was noted that if an 18-hole course cannot be accommodated there should still be a design exercise undertaken that seeks to <b>maximise the number of holes that can be retained.</b></p>	<p>A cost effective, easy to deliver alternative has been provided by the Moore Park Collective that delivers everything the Premier wanted in this park and still maintaining a much shortened 18 hole golf course.</p> <p>Refusing this proposal does not make any sense whatsoever.</p> <p>Surely a win/win is best for everyone?</p>

To support the community feedback that the surrounding parks are underutilised, I offer a few photos.

Below are photos I took of Bat and Ball field at 2:37pm and 2:41pm on 8 November 2025. This was at the same time the pop up was on at Bat and Ball field (see pop up info below). As you can see, there is no-one using this extensive space on a lovely sunny November Saturday afternoon. No-one walking, cycling running, resting, kicking a footie, picnicking, reading a book or any other passive or active recreation. This area is often not utilised on weekends and mostly never on weekdays. It is immediately adjacent to the section of Moore Park Golf course that is being taken for a 'new park'. The pop up is hidden somewhere under the trees near Cleveland St.



I cannot understand the rationale of destroying a public sporting facility that is utilised from sunrise to sunset 7 days a week and replacing it with a park that might be used by the occasional person for an hour or two on a weekend.

**To find out more, attend one of our pop-ups:**

- Saturday 8 November, 9am to 1pm at Moore Park Golf
- Saturday 8 November, 2pm to 4pm at Bat and Ball Field, Moore Park
- Sunday 9 November, 8am to 12pm outside Centennial Homestead, Centennial Park
- Sunday 9 November, 2pm to 4pm at Kokoda Park, Kensington
- Saturday 15 November, 2pm to 4pm at Crystal Street near Coles Waterloo
- Sunday 16 November, 10am to 12pm at Joynton Park, Zetland
- Sunday 16 November, 2pm to 4pm at The Drying Green, Green Square

## **MOORE PARK SOUTH – DRAFT ESTABLISHMENT PLAN**

**Name:** Name withheld 29

**Date received:** 24 November 2025

---

Submission Opposing the Proposed Reduction of Moore Park Golf Course from 18 Holes.

I write to strongly oppose the draft Moore Park South Establishment Plan insofar as it proposes to downgrade the existing 18-hole public golf course to a 9-hole course in order to convert up to 20ha to parkland. This plan will cause irreparable damage: to public golfing access, to Centennial Parklands' finances, and to a heritage sporting amenity. Below I set out the key reasons, supported by recent evidence, why the 18-hole course must remain.

### Key Objections

#### Under-estimated Cost of the Redevelopment

The Government has publicly committed only \$50 million to implement the reconfigured park and golf course.

However, independent reporting reveals that the real cost is likely much higher, with the business case estimating it at \$245.8 million (nearly \$250 million) including an operational shortfall of \$23 million over eight years.

This is not a trivial discrepancy: the \$50 M figure appears nowhere in the consultants' costed options.

Such a massive gap raises serious concerns about fiscal irresponsibility, as well as risk to taxpayers and to the Parklands' long-term financial sustainability.

#### Loss of Revenue to Centennial Parklands

Moore Park Golf contributes roughly \$7 million annually to Greater Sydney Parklands' revenue.

Cutting half of the course threatens to erode this income stream, putting at risk the finances not just of the golf course, but the broader Centennial Parklands portfolio.

In effect, the redevelopment may undermine the financial model that supports not only golf, but the maintenance and upkeep of the entire Parklands precinct.

#### Misleading Justification Based on Inflated Visitor Numbers

According to reports, the Government has relied on inflated, visitation numbers to Centennial Parklands, including people who are simply passing through from major nearby event venues (stadia, concert venues) to justify appropriating golf land.

Shadow Planning Minister Scott Farlow has warned that these numbers misrepresent actual park usage and have been used to downplay the importance of the golf course.

These misleading metrics risk erasing the real, sustained value that the 18-hole golf course brings as both a public amenity and a revenue-generating facility.

#### Environmental / Tree-Clearing Risks

Internal emails obtained by the media suggest that the redevelopment could require mass tree clearing, unconscionable in the name of quality green space.

That runs directly counter to the Government's stated rationale of enhancing tree canopy, nature habitats, and community recreation.

#### Loss of a Unique, Affordable, Public 18-Hole Facility

The course is historic, publicly accessible, and relatively affordable , especially compared to private or membership clubs.

Submissions from the community strongly note that losing the 18-hole layout would significantly diminish the experience, reduce membership, and perhaps convert what remains into only a driving range.

As one submission put it: There is never any issue with a shortage of recreation space this is a gross misuse of taxpayer money removing by far the best 18 hole public golf course in NSW.

#### Better Alternative Exists, Preserve the 18 Holes, Add Parkland

A golfing alliance (Golf Australia, PGA of Australia, Golf NSW, Moore Park Golf Club) has put forward a counter-proposal that retains a full 18-hole golf course, while still creating new public amenities.

Their proposal includes multi-use recreation infrastructure: running/walking/cycling paths, BMX track, dog park, skate park, sports courts, playgrounds, and nature trails, striking a genuine balance between green space and active recreation.

This is not a, take-or-lose, situation: there is a viable, well-designed middle ground that satisfies governmental goals of more public space without gutting the golf course and its financial contributions.

#### Risks and Broader Impacts

Financial Risk: By relying on the lowball cost figure of \$50M, the proposal could expose taxpayers to huge cost overruns or require additional funding down the track especially if

patronage of the new park is lower than projected.

**Operational Risk:** Loss of golf income may force cuts in maintenance either to the golf course or broader Parklands, affecting quality of both recreation and green space.

**Community Risk:** Golfers, especially those who rely on public, affordable access to a full 18-hole course, may be disenfranchised. The course has heritage value and has served the community for decades.

**Environmental Risk:** Tree-clearing and habitat disruption for the construction of the new park could undermine the ecological benefits the government claims to want to deliver.

## Conclusion

Given the above, I urge the decision-makers to:

Reject the current proposal that reduces the course to 9 holes based on a misleading and likely dangerously under-resourced cost model.

Adopt the alternative 18-hole proposal offered by the golfing alliance, which provides for both green open space and continued full-course golf, along with new community facilities.

Reassess the financial case transparently, with full public disclosure of the business-case estimates, the projected operating shortfall, and realistic patronage models for both golf and non-golf users.

Protect the heritage and recreational value of the Moore Park Golf Course as a public facility, especially given its importance in the Centennial Parklands financial ecosystem.

By preserving the 18-hole course, the Government can still deliver its vision for more accessible, publicly accessible green space without destroying a financially valuable, community-loved, and historic public asset.

## **MOORE PARK SOUTH – DRAFT ESTABLISHMENT PLAN**

**Name:** Name withheld 30

**Date received:** 23 November 2025

---

Response to the NSW Government Establishment Plan for Moore Park Golf Precinct

Below are two plans prepared for the redesign of Moore Park Golf Club (MPGC) and immediate surrounding precinct. Plan A prepared by the NSW Government and Plan B prepared by Moore Park Golf Club. It is clear from these plans that two points of difference exist in the reconfiguration of MPGC. The first is the difference between the amount of land proposed to be retained as a golf course, while the second and more compelling point, are the number of golf holes proposed to be retained.

The NSW Govt is proposing the course continues to operate with nine holes, while Moore Park Golf Club seeks to continue to offer 18 holes, albeit across a smaller footprint. It is not unreasonable for a compromise to be reached in meeting the objectives of both the NSW Government and MPGC. Both the NSW Government and MPGC have each set out their respective objectives in the documentation and plans each party has released to date.

Plan A NSW Govt Proposed Establishment Plan

Plan B Moore Park Golf Club Plan

In support of meeting both sides objectives, and in particular, retaining an 18 hole golf course, it is important that the NSW Government and MPGC understand the importance of the provision and management of open space across the respective Local Government Areas (LGA's) of Sydney. It is confirmed by the NSW Government that the land is to be retained as open space without temptation to alter its use in the decade ahead.

While the number of golf courses across Sydney differ by local government area, they are not all equal, and in particular, public access courses are not equal within the loose definition of public access. Many golf courses while offering some public access play, impose prohibitive green fees and limited time slots, rendering them private by nature and pricing out most non-members of the surrounding working-class genre. The NSW Government plays an important role in supporting all sports including golf and in particular, supporting the availability of golf courses as 18 hole offerings to its working-class constituency across Sydney.

While many golf courses operate across Sydney, most courses are heavily subsidized by government through imposts including nominal ground rents levied as a percentage of the NSW Valuer-Generals land value. Golf courses like other sporting facilities sit within the statutory definition of not-for-profits. The benefits afforded by each level of government under the not-for-profit definition are provided by state, local and commonwealth government. These include

exemptions from land tax at the state level, company and income tax at the commonwealth level and rating differential distinction at the local government level.

Moore Park is one of the very few 18 hole golf courses that exists for the working -class golfer, offering a high proportion of public access tee times and is among the lowest price per game in Sydney East. MPGC is currently a soft target for the NSW Government who largely maintains the course and works closely with MPGC in its operation. In this regard, in conjunction with tax subsidisation, government supports golf iteratively in many ways, shapes and forms and MPGC is an example of a model that directly and equally supports the working -class golfer across Sydney.

Nine-hole golf courses like Bondi and Woollahra while mentioned in the governments earlier commentary were always nine holes, so to have included these in the rationale for reducing MPGC to nine holes, is not a like for like comparison. Further, the thoughtless commentary that golfers go around a reconfigured nine hole Moore Park Course twice is provocative when a plan to reduce the footprint of the course while maintaining 18 holes could be reached. There is plenty of opportunity for the land of Moore Park Golf Precinct to be converted and shared with the surrounding residents while maintaining 18 holes.

Further, MPGC is highly distinguishable from most golf courses across Sydney, as a related entity of MPGC operates a successful and popular driving range within the confines of the Moore Park golfing precinct. This facility would ordinarily accommodate two par 3 holes in area. There is no plausible reason why MPGC and the NSW Government would not consider MPGC operating a shorter and more technical Par 64, 18 hole golf course. The current Par 70 could be reduced by 6 strokes, rather than the 2 strokes proposed by MPGC in accommodating the ongoing use of the driving range. This would permit MPGC to operate as a Par 64, 18 hole golf course and be a plausible compromise in reaching agreement in retaining 18 holes.

In recent days, it has been revealed that other studies have been sought by the NSW Govt with higher costs associated with the conversion of the golfing precinct. This shows that an alternative and iterative plan may exist if both sides are willing to negotiate. Most state governments of both sides of the political divide struggle with the compulsory acquisition of land phase of large infrastructure projects. This is a classic example and in 1991 the NSW Govt introduced amendments to the Land Acquisition (Just Terms Compensation) Act 1991. The primary objective of this statute is that the acquisition of land be achieved by negotiation rather than by compulsion, an objective that is far from being exhausted in the case of MPGC.

As is the case in the transition of any land use, progress may be iterative and there is no good reason why such a compromise cannot be achieved by two willing parties, while both meeting their respective objectives. While not explicitly stated, the NSW Government believes that golf consumes large portions of land relative to other land uses. At some point, the golfing industry will need to work with government in achieving the necessary compromises in balancing the needs of golf with those of other sports and public land uses. In response, government will need to refine and develop its approach in working with golf s peak bodies and clubs while reviewing and improving access to this sport. There is much work to be done before the crude approach of halving golf courses is adopted as the perceived model to serving the needs of the community across Sydney and NSW.

**MOORE PARK SOUTH – DRAFT ESTABLISHMENT PLAN**

**Name:** Name withheld 31

**Date received:** 11 November 2025

---

Why There is no provision for a cycling track in Dacey Ave and Anzac Pde? This is while you are spending a \$50 million investment.

Your planned map completely excludes Dacy Avenue and Anzac Parade, which surround the golf course.

This strongly suggests that you have a different vision for the area. What is your future plan for Dacey Ave and Anza Pde after turning the golf course into a public space? Train station or light rail? With what cost? All the mature trees?

## MOORE PARK SOUTH – DRAFT ESTABLISHMENT PLAN

**Name:** Name withheld 32

**Date received:** 24 November 2025

---

I am strongly against the proposed plan to transform 20 hectares of Moore Park Golf Course into a new public park for Sydney.

**Key reasons:**

- There is no solid, reliable proof that Centennial Parklands, in its current form, has anything close to the 31 million people utilisation rate stated in the proposal. That would require an average of 85,000 people to be visiting and using the park every single day. I live locally and frequently walk and cycle through the parklands on both weekdays and weekends, and much of the parklands is typically almost empty at any time or day of the week. The touted 31 million people is clearly including the numbers of people going to festivals in the parklands and attending sporting and entertainment events at the SCG, Allianz Stadium and the Entertainment Quarter. Any change to the golf course into a public park would have no bearing on these figures at all.
- The key point being there is no established need for more public park space when the existing areas are under utilised in the first place.
- In my experience, Moore Park West is particularly under utilised. Many of the inclusions for the proposed park could be introduced in this area, providing more amenity without disrupting the busiest and most heavily utilised area of Centennial Parklands.
- I haven't found any clear explanation of how the \$50m in the state budget is going to fund all the necessary activities to establish and maintain the planned public park. The project very much feels like a white elephant.
- The golf facilities at the club already provide millions of dollars of funding for the upkeep of the existing facilities. The current structure works for what the area needs; there is no need to change it.
- Moore Park Golf Club is one of the busiest public golf clubs in the whole country, if not the busiest, serving half a million people each year. It is at capacity all day, every day. The vast majority of people playing the course are recreational players, visitors or through corporate events. Cutting it in half will reduce the playing opportunity by more than 50% and make playing golf for anyone not linked to a current club in Sydney considerably more difficult and expensive.
- Moore Park is one of the most affordable golf courses in Sydney, making the game of golf accessible to everyone. Reducing the course will make playing golf more expensive and inaccessible to anyone in the Sydney area. Participation in golf is booming, with many people joining the game via the facilities already available at Moore Park, but this planned change reduces the opportunity for people to actually play.
- The proposed changes to the course do not seem well thought through, and there appears to be a lot more scope for additional holes than the 9 holes in the proposal.

- If the plan goes ahead and the park is established, will it be monitored for usage? And if it is found to be underutilised, will the grounds be returned to the golf course, which runs at full capacity almost every day?

## MOORE PARK SOUTH – DRAFT ESTABLISHMENT PLAN

**Name:** Name withheld 33

**Date received:** 16 November 2025

---

Position Retain the full 18-hole Moore Park Golf Course

Thank you for the opportunity to comment on the Draft Moore Park South Establishment Plan. I strongly oppose any proposal to cut Moore Park Golf Course in half and reduce it to a 9-hole layout.

Moore Park Golf Course must remain an 18-hole public course.

The draft plan does not provide any evidence demonstrating why an 18-hole course cannot be retained. It simply proposes keeping a minimum 9-hole course without presenting any alternatives that maintain all 18 holes or explaining why those options were dismissed.

There is already extensive parkland in the immediate area much of it under-utilised.

The land immediately surrounding Moore Park Golf is already dominated by large, open parks: Centennial Park, Moore Park, Kippax Lake Park, Queens Park, and expansive passive recreation areas that are consistently quiet during weekdays and off-peak times. In many places, these lawns sit empty. There is no shortage of general parkland here. What is in short supply is accessible, affordable, full-length public golf of which Moore Park is the only remaining inner-city example.

The course is extremely busy and heavily used.

Moore Park is widely recognised as one of the busiest public golf courses in Australia, with constant play from morning to dusk, seven days a week. Tee sheets are routinely full; weekend times sell out quickly; and many thousands of people rely on the course each week for recreation, exercise and community participation. Removing 9 holes would dramatically reduce capacity and push many existing players out of the facility entirely.

In short:

- This is already one of Sydney's most park-rich precincts.
- The golf course is one of the only active, heavily-used recreation assets in the area.
- The Plan does not justify removing a well-used, affordable 18-hole public course to create more empty lawns.

I urge the NSW Government and the Trust to retain the full 18-hole Moore Park Golf Course and to explore alternative designs that add community facilities without eliminating half of one of Sydney's most important public sporting venues.

Thank you for considering this submission.

**Submission  
No. 271**

**MOORE PARK SOUTH – DRAFT ESTABLISHMENT PLAN**

**Name:** Name withheld 34

**Date received:** 31 October 2025

---

Terrible idea

Leave it as is

Use Centennial Park and stop wasting out taxpayers money

**Submission  
No. 272**

**MOORE PARK SOUTH – DRAFT ESTABLISHMENT PLAN**

**Name:** Name withheld 35

**Date received:** 24 November 2025

---

Look just a note to say that I really think that this proposal is very misguided, to take public land that already performs so well for the people of Sydney in every category is silly in my opinion. We should be celebrating the success of this public offering and maybe upgrading it not reducing it.

## **MOORE PARK SOUTH – DRAFT ESTABLISHMENT PLAN**

**Name:** Name withheld 36

**Date received:** 24 November 2025

---

I have been a member of the Moore Park Golf Club and have been playing the course since 1989 and for a considerable amount of those 36 years as a Member for Life. From the very beginning I have enjoyed the comradery of the club and its members and the atmosphere that exuded from the club, I've enjoyed the challenges set by the course and mastering each improvement to the layout as they occurred.

Saturdays were sacrosanct and were spent on the course playing 18 holes of golf and socialising with other members from early Saturday mornings until later in the afternoons. The significant relief from a full time work load, an opportunity for exercise and social interaction, leading to lifelong friendships, all whilst enjoying the company and beautiful surroundings in the middle of the city while playing a par 70 championship golf course. I doubt I would have received the same benefits or made the connections over a 9 hole course, you just don't get the same opportunity over the short game.

I have seen the course transform into the brilliant layout you see today, a world class golf course that is situated in the heart of Sydney, which is accessible to everyone who wants to play or even just try golf, I can't think of too many cities around the world that provides such a facility. I have looked at the plans for the reduced 9 hole proposal and it appears that the 9 hole solution has been designed by someone who isn't a golfer, and certainly not by any serious golf architect. I request that for such an important asset, that the correct process is followed. If we want to maintain a course (world standard) it has to be properly designed. If the goal is to release space for 'public parklands', then get a duly qualified golf architect, there are many available, and have them properly and thoughtfully design a more compact 18 hole course.

Reducing Moore Park Golf Course to 9 holes would remove the soul from the course & place a huge amount of pressure on the course in terms of foot traffic wear & tear.

I ask that the current New South Wales government rethink their intended plan to reduce the Moore Park Golf Course from 18 to 9 holes and that they with the aid of their Architects design public space around the existing 18 hole golf course, bearing in mind the available public space that already exists in the Moore Park, Centennial Park Precinct, Queens Park, Hyde Park, Royal Botanic Garden, The Domain, Sydney Park, Camperdown Park and more. Please also take into consideration the decimation of the Cammeray Golf Course, a once 18 hole public course that is now reduced to a shell of its former self.

I ask the current New South Wales government to ensure that City of Sydney planners and Executive do a better job of ensuring that when new developments are approved that they

contain suitable public greenspace within the development. There is a great example of clever thinking to provide green space at Wadanggari Park in St Leonards, (near Crows Nest) that provides a wonderful playground for all.

With regards to availability of playing fields, I so very often drive along Anzac Parade and the green space is empty, underutilised and available. Perhaps there are some clever ways to designed a mixed development along this corridor that allows event parking, parklands, playing fields and green space, go up, use the airspace, don't take over or diminish an already hugely popular public facility.

What are the mitigation plans by the Minns government to recoup lost revenue from this planning proposal, Moore Park as an 18 hole course and driving range brings in significant income to the NSW Government, an income that would be severely reduced if this plan is to proceed.

I also request that the NSW Government provide clear and transparent costings and future planning details for this proposal, as there are concerns that this plan will cost well in excess of current public expectations and that perhaps there is a land grab for development purposes in the future plans.

## **MOORE PARK SOUTH – DRAFT ESTABLISHMENT PLAN**

**Name:** Name withheld 37

**Date received:** 24 November 2025

---

This submission is in support of retaining Moore Park Golf Course as a public 18 hole golfing facility.

I have been playing at Moore Park, with my partner, for around 30 years. It has been a wonderful way to meet new people, as a stress relief when I was working, and as an important social aspect now that I am retired.

It is also the only genuinely affordable 18 hole golf course available to me. All the nearby courses in the Eastern suburbs are expensive, exclusive and beyond many peoples means.

Additionally it is the only nearby course that has the facilities available for everyone. For example, there are excellent practice facilities and teaching professionals. Both are extremely important for those new to this sport. Golf is becoming more and more popular due to its accessibility. Loneliness combined with mental health problems are, sadly, becoming more common and golf is a rare opportunity for people to mix with community members and get exercise and form friendships. These benefits are mostly not available in a park for people living on their own.

Sadly a 9 hole course will restrict the available usage significantly (stated as 60% less capacity). And therefore the benefits as I have outlined above are also significantly restricted.

My Request is to continue to have an 18 hole golf facility in the format supported by Golf Australia and other experts. This alternative proposal by Golf Australia et al supports all of the benefits of the Premier's proposal and maximizes the use of this important public space. The foresight shown by the public golfing community over the last 120 years has left a legacy to be proud of and must be made available to future generations of golfers.

Therefore the Premier should honour this legacy.

Interestingly, the Premier of South Australia is supporting the total redevelopment of a public golf course in Adelaide as he sees this as offering an important public asset to the community as well as promoting Adelaide to international visitors. I have met many international golfers at Moore Park over the years and they are blown away by the beauty of the course and its accessibility to the city.

## **MOORE PARK SOUTH – DRAFT ESTABLISHMENT PLAN**

**Name:** Name withheld 38

**Date received:** 24 November 2025

---

I am a member of Moore Park golf course and I am very concerned about the proposal to cut Moore Park Golf by 20 hectares. The process has been less than transparent and the announcements that the NSW Government is transforming our golf course into a park for Sydney is ignoring the fact that Moore Park golf was established as the workers' course for all of Sydney. The fact that this new park will be "close to one of the most densely populated parts of the city" is the result of approvals for high density housing provided by the Mayor of Sydney, Clover Moore, who has been trying to get rid of Moore Park golf course for at least the last 20 years and has approved these housing developments without requiring adequate green space.

The announcement that this new park will deliver high quality green space appears to ignore that there is already 310 hectares of green space at Centennial Park, Queens Park and multiple spaces at and around Moore Park, all of which are underutilised.

Moore Park is one of the few affordable 18 hole public courses near the CBD and reducing it to 9 holes will reduce capacity by 60% - a huge impact to the golfing community as one of the most used courses in the country and the Southern Hemisphere. This NSW Government proposal shows a complete lack of understanding of quality, championship and competition golf. Whoever came up with the idea that 9 holes would be sufficient for the membership of Moore Park Golf Club has never played sport. You cannot play tennis on half a court; you cannot play football on half a pitch, so why are we expected to play golf on half a golf course?

The draft design appears inefficient and lacking in golf course design expertise. Several holes present clear safety risks and would require extensive fencing. The plan also does not address the site's topography or demonstrate innovative public golf design thinking and most importantly the needs of current and future golfers and public park users. I would question whether any golf course designers have been consulted to advise on this proposal.

I fully support the Alternate Proposal submitted to the NSW Government by the Save Moore Park Collective. It shows that both an 18 hole public course and new public park and recreation infrastructure can transform Moore Park South to meet community needs. I would urgently request the NSW Government to acknowledge the submission made by the Save Moore Park Collective and work with the Collective and other experts to explore this design for future generations to enjoy.

Moore Park Golf serves more than half a million visitors annually and is a critical asset for affordable recreation and both community connection and health. Public golf demand is growing and reducing the course would negatively and severely impact our lives. Clover

Moore has stated that we have access to 12 other golf courses in the Eastern Suburbs, so losing Moore Park is not a big deal. However, I need to point out the following:

9 hole: Bondi, Botany and Woollahra

18 hole, private, invitation and waiting list: Royal Sydney, The Australian, NSW

18 hole, waiting list: Eastlakes, Bonnydoon, St Michaels, The Lakes, Randwick

18 hole, closed membership: The Coast

Some of these golf clubs have waiting lists ranging from 2 to 20 years, with joining fees ranging from \$2000 to \$40,000 and annual fees averaging \$5000.

So my question to the NSW Government is have you factored in the cost of relocating the dispossessed Moore Park golfers to join other clubs? This needs to be a serious consideration on your budgeting

I am requesting the NSW Government to work with Golf Australia and qualified golf architects - as well as the wider golf community to design a safer more innovative and responsive park that retains as much playable golf as possible and delivers the best outcome for both golfers and the community and to also follow your own rules regarding public planning.

Thank you for considering my submission.

**MOORE PARK SOUTH – DRAFT ESTABLISHMENT PLAN**

**Name:** Name withheld 39

**Date received:** 23 November 2025

---



## MOORE PARK SOUTH – DRAFT ESTABLISHMENT PLAN

**Name:** Name withheld 40

**Date received:** 5 November 2025

---

Maintain Moore Park Golf Course as an 18-hole Championship course

I am contacting you today for to voice my opposition to the proposed reduction of Moore Park Golf Course from 18 to 9-holes and to hopefully address some of the misconceptions and untruths that are currently being bandied about in relation to this matter.

Any decision of this magnitude should be made with a balanced and educated view, so I hope that this note will assist in your decision making.

Firstly, some background, contrary to the stereotypical golfer I am not rich, male or old, I have played golf for over 30 years, starting as a junior and have enjoyed the game throughout my adult life. When I took up the game, I got a part time job so that I could fund my membership at a club and buy my first set of clubs so alas no privilege here either. I now work full time in the city and one of the main reasons that I chose to join Moore Park Golf Club was because of its equal opportunity approach that allows women to play in all competitions throughout the week and most importantly on a Saturday and Sunday too.

Far from being exclusive, Moore Park Golf course is a public facility accessible to anyone who may want to give the game a go. Which brings me on to my next point, for those of you who do not know, golf works under a handicapping system that essentially levels the playing field for anyone wanting to play, which means that everyone can play against each other and have a fun, competitive experience irrespective of gender, age or ability. Could you imagine walking on to a tennis court and taking a point off Serena Williams? Or facing a fast-ball from Mitchell Johnson? With the golf handicapping system however, someone could challenge Adam Scott to a game and have a hope of winning a hole or two; not so elitist now?

Another reason that I play at Moore Park is because its accessibility; I live in the area and can either walk to the course, or indeed if coming from work can catch the wonderful tram to the Course's doorstep. And I am not alone in enjoying the proximity to the city of this golf course, 80% of the people using the facility live in the City of Sydney constituency.

However, its accessibility is probably only 3rd on my list of reasons why I play the course. Above that is its affordability. You don't have to be a member of the Club to play at Moore Park, but I have chosen to be a member because the annual fee is by far the most affordable when compared to other private courses in the surrounding areas. Historically, Moore Golf Course was created for the working classes to be able to play the game and over the last century this ideal has been maintained.

Everyone is made to feel welcome and a diverse spectrum of people choose to play at Moore Park because of the inclusive feel and lack of snobbery that tends to be (wrongly) associated with golf.

The mental and physical benefits the game of golf provides can be further investigated here.

But let me ask you this question, name one other sport where an 82-year-old man can still be competitive and indeed still win a Club Championship as we had in recent years at Moore Park? During Covid we experienced an increase in demand for rounds of golf at Moore Park (projected to be >90,000 this year), golf was one of the few sports you could still play in lockdown and this assisted the mental and physical health of those who could play at the publicly accessible, affordable course.

Finally, I wanted to ask a question regarding the proposal. By reducing the golf course to 9 holes, do any of you understand the impact this would have on the course and facility? By saying you can go around twice screams to me a complete lack of understanding of the game and indeed sport in general. Let me use this analogy, it's the equivalent of saying to a rugby player you can play on half the pitch but for twice the amount of time feasible but unfathomable to anyone who appreciates the game.

By cutting the course in half I would like you to answer:

1. Where will the shortfall in funding to maintain the rest of Centennial Parklands come from? I guarantee you, the income derived from the Golf facility will reduce by >60%, the reason I know that is that physically cutting the course in half cuts the number of people able to play at any one time in half (if not more)
2. Who is going to fund the creation and maintenance of this new park you are proposing?
3. With ~90,000 rounds a year played at Moore Park, where do you propose this demand for 18 holes goes? Surrounding courses that are accessible to the public are already at capacity.

I hope you now have a better understanding of why this proposal should not proceed, you would be destroying a historically significant sporting venue that provides hundreds of thousands of your constituents and visitors to this great city an affordable and inclusive opportunity to play golf in a central location. The course makes up a small percentage of the total green space in and around Moore Park and Centennial Parklands so please stop attacking our course using dated stereotypes and misinformation that only succeed in confirming the complete lack of due diligence and understanding undertaken to pull this idea together.

Thank you for your time in reading this, and should you have any questions regarding Moore Park Golf Course and indeed golf in general I would be happy to help.

## **MOORE PARK SOUTH – DRAFT ESTABLISHMENT PLAN**

**Name:** Name withheld 41

**Date received:** 23 November 2025

---

I strongly object to the proposed Establishment Plan for Moore Park. This will result in an excellent 18-hole golf course being reduced to a tight and compromised 9-hole golf course. The introduction of an 18-hole mini golf course is a joke as mini golf in no way resembles actual golf.

The growth in population in the surrounding areas is acknowledged but there is already considerable open space in Centennial Park, Queens Park and the areas around Moore Park and Sydney Girls Grammar School that could be better utilised and repurposed to provide the new amenities identified in the Establishment Plan.

This land has been successfully used as a golf course and driving range by the people of Sydney for many years. It is an extraordinary oversight that it is not heritage listed. One of its key attributes is that it is a public golf course open to all members of the public for reasonable green fees, something unusual and distinctive in Sydney.

The course is used by the public from dawn to dusk virtually every day. It is also heavily used for corporate events which again provides access for members of the public. Many of the users are residents living in accommodation close to Moore Park.

The course is uniquely located close to the Sydney CBD and attracts many domestic and international visitors who will simply not use the venue if it is reduced to a 9-hole golf course. There is already considerable pressure on the surrounding golf courses which means that current members and members of the public will not be able to easily or affordably access alternative facilities. The current affordability of a round of golf at Moore Park means that it is a venue for everyone. These plans will absolutely destroy this feature.

The proposed amendments to the golf course will greatly diminish its value as a golfing venue while providing only minimal value to the public who already enjoy considerable access to open land and picnic areas in the surrounding parks.

The strength of public feeling about these changes is being largely ignored. Over 30,000 people have signed petitions objecting to these changes. These signatories are the people who are regularly using and enjoying the current facilities. If their voices are not heard they will lose these facilities as the Establishment Plan provides a far inferior alternative to the current facilities.

Has the work been done to identify what the residents in the surrounding areas really want? These residents are often frequent users of the golf course and driving range and in my discussions with them state that they are more than happy with the current access to

open land, especially if some of the \$250million identified for the Moore Park renovations were used to improve the amenity of this land.

I am concerned that this change is being driven by political ideology ignoring the wishes of the residents and existing users of the facilities.

Please do not destroy this unique and greatly loved and utilised facility. Once it has gone it can never be replaced. Sydney, its residents and many golfing visitors will be all the poorer for it.

## MOORE PARK SOUTH – DRAFT ESTABLISHMENT PLAN

**Name:** Name withheld 42

**Date received:** 21 November 2025

---

### **Strong Support for the Plan**

I strongly support the vision and direction outlined in the Draft Moore Park South Establishment Plan. Transforming part of Moore Park Golf Course into accessible, inclusive public parkland is an excellent and forward-thinking decision. This initiative responds to the needs of a rapidly growing urban community and reflects a genuine commitment to providing open space for people who live in high-density housing nearby.

The plan's focus on connectivity, biodiversity, cultural recognition, and community recreation is commendable. The balance between natural areas and active recreation opportunities will make Moore Park South a welcoming and multifunctional urban park.

### **Recommendation: Expand Dog Off-Leash Areas**

While the establishment plan is already very strong, I believe it could go further in one key area — dog off-leash access.

Dog ownership in Sydney's inner suburbs is growing rapidly, yet there are very few large, safe, and natural off-leash spaces available. Moore Park South has a rare opportunity to address this by providing expansive, high-quality off-leash areas integrated into the broader parkland design.

Off-leash spaces contribute significantly to the community's use and enjoyment of parks. They promote physical activity, social connection, and wellbeing — for both dogs and their owners. Moreover, well-designed off-leash areas can coexist harmoniously with natural restoration and active recreation zones when planned carefully.

### **Sydney Park: A Proven Model**

Sydney Park in Alexandria is an outstanding example of a large, successful dog-friendly urban park. It demonstrates that:

- A majority off-leash policy works: The park remains welcoming and safe for all users through clear signage, good pathways, and open sightlines.
- Environmental value and dog recreation can coexist: Sydney Park's wetlands and native landscapes thrive alongside active use by dog owners.
- Community activation flourishes: Off-leash areas attract daily visitors, encouraging stewardship, social interaction, and shared care for the park.

Moore Park South can emulate this success by adopting a similar approach — making most or all of the park dog off-leash while retaining designated on-leash or exclusion areas where

necessary (e.g., near children's play spaces, golf areas, or sensitive habitats).

## **Conclusion**

The Moore Park South Establishment Plan is an exciting and much-needed investment in Sydney's green future. Expanding the park's vision to include substantial dog off-leash areas — modelled on Sydney Park — would make it even more inclusive, lively, and well-used. I strongly encourage Centennial Parklands to prioritise dog-friendly planning as part of the park's establishment and long-term activation.

Thank you for the opportunity to provide feedback and for your leadership in creating a new, vibrant park for the people of Sydney.

## **MOORE PARK SOUTH – DRAFT ESTABLISHMENT PLAN**

**Name:** Name withheld 43

**Date received:** 21 November 2025

---

I am writing to formally object to the proposed Moore Park South Establishment Plan currently on public exhibition. While I acknowledge the importance of increasing green space in Sydney’s inner city, I believe the current plan is flawed in several critical respects and should not proceed in its current form.

### **1. Loss of Public Golfing Access and Community Heritage**

The proposed reduction of Moore Park Golf Course from 18 holes to 9 represents a significant loss of accessible, affordable public sport infrastructure. Moore Park Golf Course is one of the few remaining public full-length courses in central Sydney, serving a diverse community of players, including schools, seniors, and multicultural groups. Halving the course undermines decades of sporting heritage and limits opportunities for physical activity in a city already facing recreational space constraints. Young people are encouraging taking up golf and this accessible golf club allows them to do so. The reduction of the 18 holes simply to provide green space from a lack of developmental planning should be forbidden.

### **2. Questionable Community Benefit and Overlap with Existing Amenities**

The plan proposes new parkland with features such as picnic areas, walking paths, and a mini-golf course. However, these amenities already exist in nearby Centennial Parklands and Prince Alfred Park. The duplication of facilities raises questions about the efficient use of public funds—particularly the \$50 million allocated to this project. The marginal gains in green space do not justify the irreversible loss of a unique recreational asset. A review of the political and commercial stakeholders and their respective independence and probity levels involved in this development proposal should be expedited.

### **3. Inadequate Consideration of Alternative Solutions**

The plan fails to explore alternative models that could balance the need for open space with the preservation of the full 18-hole course. Options such as staggered public access hours, shared-use zones, or investment in underutilized nearby land have not been transparently evaluated. This suggests a lack of genuine consultation and a predetermined outcome. A review of the political and commercial stakeholders and their respective independence and probity levels involved in this development proposal should be expedited.

### **4. Planning Process and Transparency Concerns**

While the NSW Government has conducted community consultation, the framing of the draft Establishment Plan suggests that key decisions—such as the reduction of the golf course—were made prior to meaningful public input. The “What We Heard” report does not

adequately reflect the diversity of views expressed, particularly from those opposing the course reduction.

#### Conclusion

I urge the NSW Government and Greater Sydney Parklands to pause the current plan and engage in a more inclusive, transparent planning process that considers alternative solutions. Moore Park Golf Course is not just a sporting venue—it is a vital, historic, and accessible green space that deserves protection, not fragmentation.

**MOORE PARK SOUTH – DRAFT ESTABLISHMENT PLAN**

**Name:** Name withheld 44

**Date received:** 4 November 2025

---

Stop selling off more land to property developers around Green Square and Zetland and instead invest in creating public parks. This proposal will be damaging Sydney's East recreational environment and the preservation of mature trees.

Once the golf course land is a public space, the cheapest solution to address the traffic jam which is created by concentrating more people into high rises will be at the expense of Dacey Avenue's mature trees, much like what occurred in 2016 in Anzac Parade.

Dacey Avenue trees are next to go.

**MOORE PARK SOUTH – DRAFT ESTABLISHMENT PLAN**

**Name:** Name withheld 45

**Date received:** 10 November 2025

---

I have been a regular visitor to Moore Park Golf for many years, using it to stay active, connect with friends, and enjoy one of Sydney’s few remaining public green spaces. For me, and for thousands of others, Moore Park Golf is far more than a sporting venue — it’s a community hub that supports physical health, mental wellbeing, and social connection for people of all ages and backgrounds. I am deeply concerned about the proposal to reduce the course to 9 holes. Moore Park is one of the few truly public, affordable golf facilities in Sydney, welcoming more than 500,000 visitors each year. Demand for golf is growing — especially among juniors, women, and families — and public courses like this are where most people first learn and fall in love with the game. Reducing it to 9 holes will take away opportunities for children, students, and beginners to develop skills, confidence, and friendships in a safe, inclusive environment. The draft plan also lacks imagination, safety, and sound golf architecture. It fails to use the available space efficiently or recognise that world-class public courses can thrive on smaller footprints while retaining 18 playable holes. Sydney deserves a modern, innovative design that balances recreation with accessibility and safety. I urge the NSW Government to work with qualified golf architects and the local community to retain a full 18-hole layout — one that continues to inspire the next generation of golfers and preserves this vital green space for everyone’s wellbeing.

## **MOORE PARK SOUTH – DRAFT ESTABLISHMENT PLAN**

**Name:** Name withheld 46

**Date received:** 24 November 2025

---

I am writing to express my strong opposition to the proposed bisection of Moore Park Golf Course and the conversion of a significant portion of this long-standing public facility into additional parkland. While I support the principle of expanding green space in Sydney, this proposal misdiagnoses the problem and jeopardises one of the most heavily utilised, inclusive, and health-promoting public assets in the state.

Moore Park Golf Course is not an underused or exclusive enclave. It is the most frequented public golf course in New South Wales, a fact that reflects its deep community value and broad accessibility. Its location central, walkable, and well-served by public transport means that people from across Sydney, regardless of background or income, can participate in golf affordably. Unlike the many private courses scattered across the city, Moore Park operates as a genuinely public recreation space. It has long enabled individuals and families to engage in low-cost, healthy physical activity, and I am among the many who learned to play golf there. For countless residents, it remains a welcoming entry point into sport and community life.

The proposal to carve out a portion of the course to create a park between the M1 and Anzac Parade is deeply flawed. The location in by major arterial roads does not lend itself to significant foot traffic or meaningful community use. The claim that this new strip of land could compensate for the removal of a thriving sporting facility is unrealistic. In practice, it risks becoming a rarely used stretch of grass bounded by traffic, rather than the vibrant, active community asset that Moore Park Golf Course already is.

Furthermore, this proposal distracts from broader planning failures that should be confronted directly. The rapid development of Alexandria, Rosebery, Waterloo, Zetland, and surrounding precincts has been permitted without sufficient integration of public open space. The current pressure to find green space by shrinking a highly functional recreational facility is a symptom of deeper systemic issues. Specifically, there has been inadequate scrutiny of why open space requirements were not embedded into development approvals and why councils and planning authorities allowed such density without corresponding community infrastructure. These oversights should be investigated thoroughly not patched over by sacrificing a successful public asset that has served Sydneysiders for more than a century. If public green space is lacking in these newer communities, the appropriate response is to hold decision-makers accountable and to demand better planning not to dismantle an existing, well-used facility that already fulfils an important civic function. Moore Park Golf Course supports healthy living, community belonging, intergenerational participation, and equitable access to recreation. Its value cannot be replicated by a narrow band of parkland wedged between major highways.

I urge you to reconsider this proposal and instead address the root causes of inadequate urban planning. Sydney deserves thoughtful, forward-looking solutions that expand public

space without diminishing the assets we already rely upon. Moore Park Golf Course is one such asset, and it should be protected as a cornerstone of inclusive, accessible, and active community living.

Thank you for considering this submission.

## **MOORE PARK SOUTH – DRAFT ESTABLISHMENT PLAN**

**Name:** Name withheld 47

**Date received:** 20 November 2025

---

Please accept this submission in strong support of retaining Moore Park Golf Club exactly as it is. The course is a rare and valuable green space that is already enjoyed by thousands of people in the local community each year. Crucially, it provides accessible entry to a sport that can often be financially prohibitive.

Moore Park is a shining example of inclusive golf. It is a well-maintained public course with a design that favours players of all ages and abilities, allowing both locals and visitors to enjoy a game that, elsewhere, is often out of reach. In this respect, the land already serves the community exceptionally well.

I find it difficult to identify any genuine motivation for change. The perception that golf is an elitist pursuit simply does not apply here. Moore Park is quite the opposite: it offers one of the most accessible, affordable, and welcoming golfing experiences in Sydney. Suggesting that this land must be reclaimed for broader community use overlooks the fact that it already fulfils that purpose. Additionally, Centennial Park, a vast, beautiful and underutilised public space, sits directly next door. There has been no clear evidence presented that it is overcrowded or insufficient for local needs.

What is particularly concerning is that the proposed changes appear to be driven almost entirely by Clover Moore, without clear community demand. After reviewing numerous documents, proposals and public discussions, I cannot find any organised group of residents advocating for the reduction of the golf course. There are no protests, no petitions calling for its closure, and no groundswell of local dissatisfaction. The absence of community pressure raises the question of why such a significant intervention is being pursued unilaterally. If there were strong local opposition to Moore Park Golf Club, the proposal might be understandable...but there is none!

I urge you not to “fix” what is not broken. Instead, please recognise the value Moore Park Golf Club brings to the community: a welcoming, affordable recreational facility that supports participation across age, gender and ability. Preserving the course in its current form is not only sensible, it is in the best interests of the people who use and appreciate this space every day.

## **MOORE PARK SOUTH – DRAFT ESTABLISHMENT PLAN**

**Name:** Name withheld 48

**Date received:** 20 November 2025

---

Please find attached our submission regarding the changes to the currently fenced and alienated Moore Park South area.

### Endorsement of Public Access

We strongly endorse the opening up of 9 holes of the Moore Park Golf to broader public access and a diversity of uses, rather than the restricted access and fee for access currently burdening many hectares of precious inner city parkland.

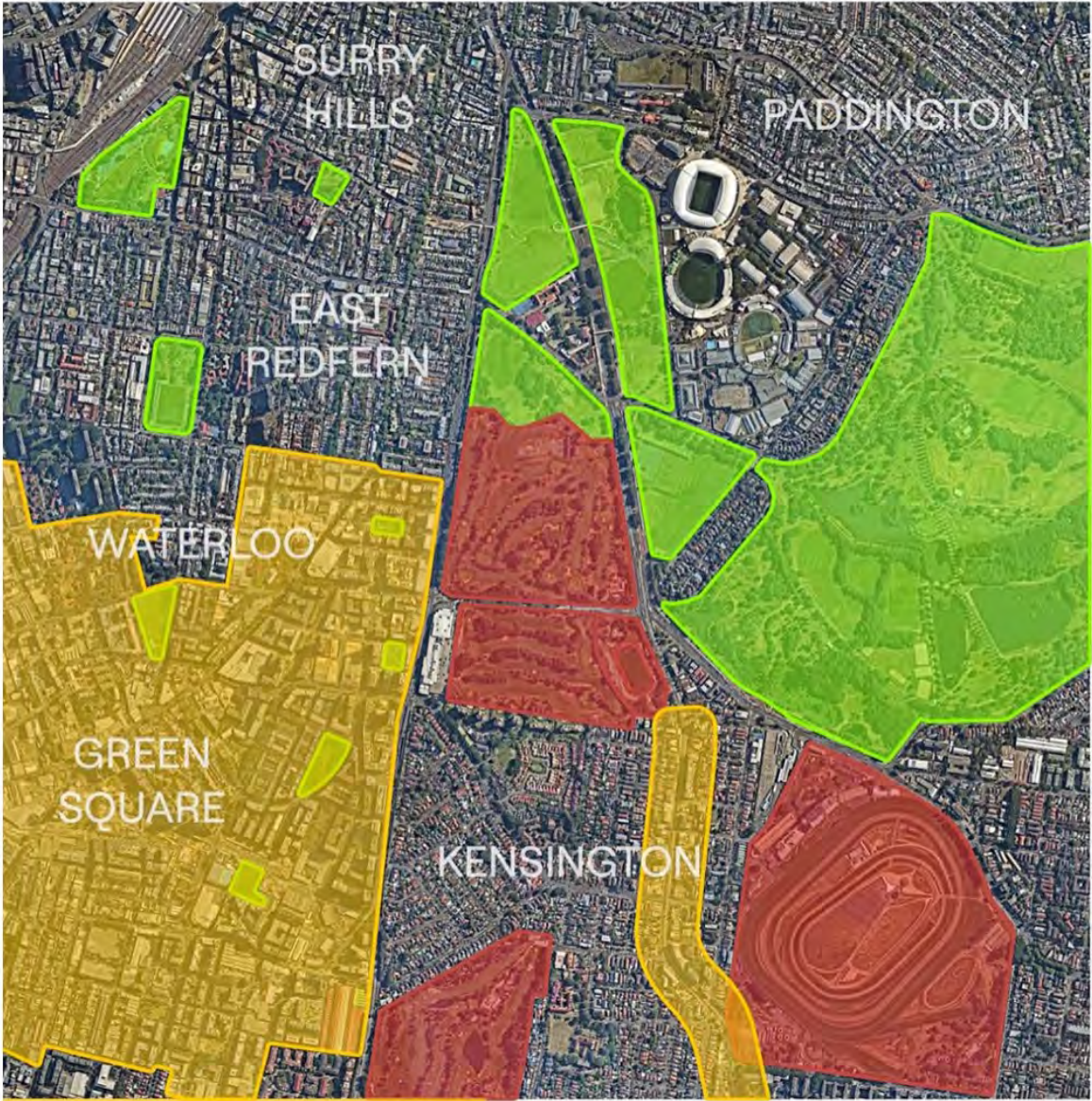
The greater Moore Park is a remnant of the Sydney Common, gazetted by Governor Macquarie from 1810. Commons are widely understood to be accessible public spaces, as opposed to fenced off areas. The Golf Course has alienated over 40 hectares of public space for the last century - ideally all the fences would be taken down and all the area returned to wider public use.

### Alternative Recommendation

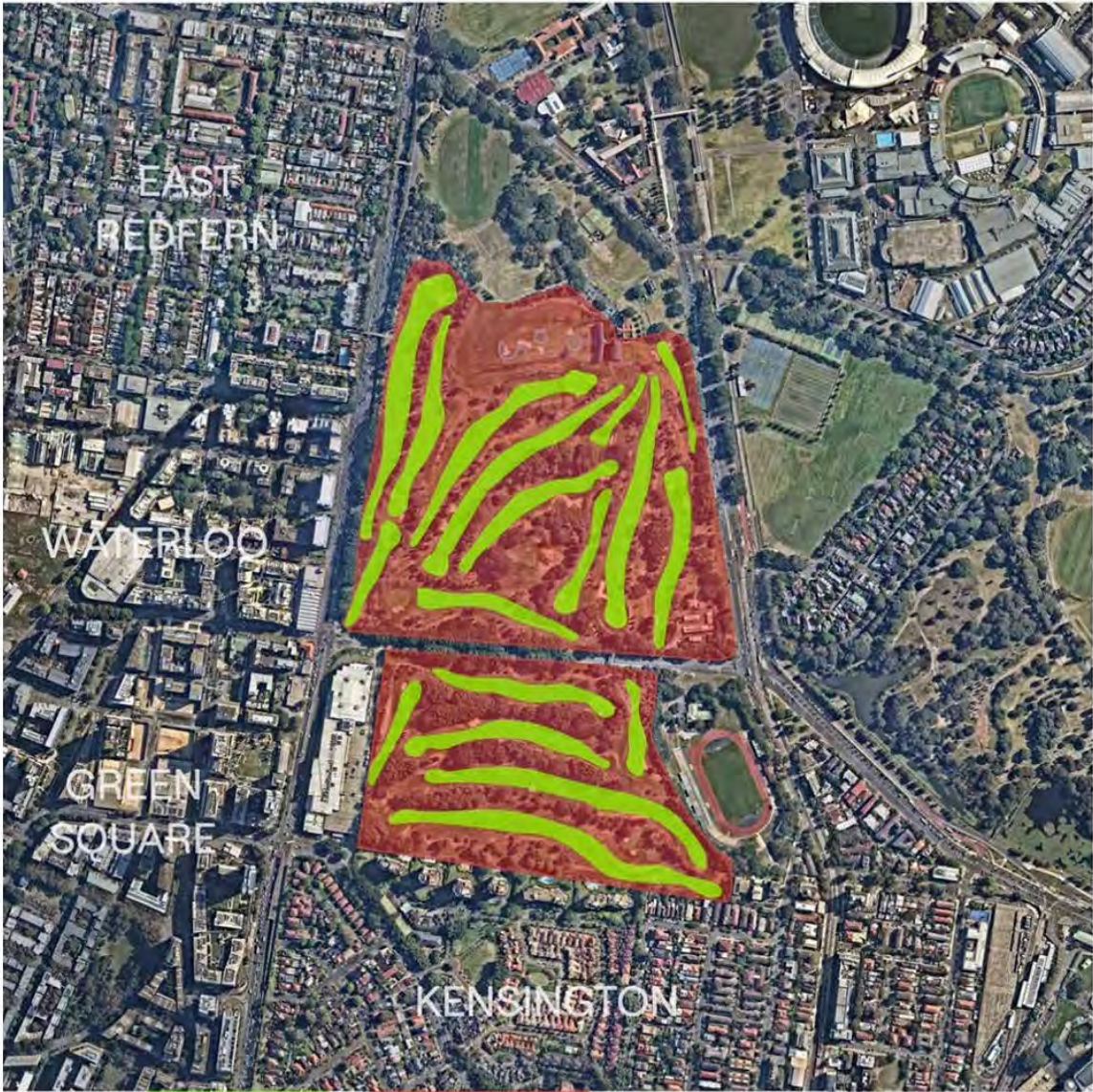
However the plans currently on display have a deep flaw that must be redressed. In our attached series of drawings we demonstrate that;

- The southern half and western fringe are the parts that should be opened to the public, as they would be far more accessible to the areas of substantial and justified density uplift in and around Green Square, North Rosebery and Kensington. These areas will soon have a permanent population of 70 000+ people - they need the generous expanse of parkland that only Moore Park's southern fields can provide;
- The areas of Surry Hills and East Redfern already have access to the existing open areas of Moore Park, which can be further improved by removing 2 holes on the western side to make a broad and connective landscape edge along the South Dowling Street frontage;
- A far greater public benefit would be gained by fully opening the southern portion as public space. This area can more readily provide access with Centennial Park, ES Marks Field and Kensington to improve interconnectivity between parklands and dense urban areas;
- Opening the southern half would allow the long overdue upgrading of Dacey Avenue as a pedestrian promenade and commuter cycleway;
- The alternative plan would retain a compact 9 hole golf course adjacent the existing Club House and Driving Range, requiring minimal reorganisation.

We commend the NSW Government's initiative for opening Moore Park to the wider public, however it should proceed on the basis of our submission to gain the maximum public benefit.



Major Urban Renewal Areas



Current **Golf Holes** & **Inaccessible** Open Space



New Park, Renovated & Removed Golf Holes



Essential New **Public Connections**



Essential New **Pedestrian & Cycle Promenades**

## MOORE PARK SOUTH – DRAFT ESTABLISHMENT PLAN

**Name:** Name withheld 49

**Date received:** 10 November 2025

---

1. Use the full golf footprint – maximize the number of holes
  - The land allocated for golf should be used to deliver as many playable holes and as much public golf capacity as possible.
  - Reducing to a compromised 9-hole layout- when more is possible
  - is unnecessary, short sighted and limit access to the sport.
2. The design lacks innovation, imagination, is unsafe and inefficient
  - The draft layout looks like it has been designed with no understanding of golf architecture, the topography of Moore Park South, the future users of the course and shows little creativity or modern thinking.
  - There are no attempts made to maintain a course that can be enjoyed and used by as many people as possible noting there are many local examples of 18-hole courses on footprints of less than 35Ha. Nor is there consideration for innovations like flexible routing, short-loop options or shared recreational concepts seen in world-class public golf designs.
  - Several proposed holes are clearly not safe and will require substantial fencing both around and within the boundaries of the course to keep golfers, and park users safe.
  - The inaccuracy of this plan suggest it has not been prepared by qualified golf architects or with oversight from the golf community. This must change.
  - Sydney's booming golf community deserves better.
3. Public golf in Sydney is scarce and demand is growing
  - Moore Park provides affordable, accessible golf for all, serving 500,000+ visitors annually and connecting people of all ages and backgrounds.
  - Golf promotes health, fitness and social inclusion – walking the course, learning the game, and connecting with others improves physical and mental wellbeing.
  - Participation is booming – Over 4 million Australians played in FY2025 – and public courses like Moore Park are essential entry points for young people, women, seniors, and families.
  - The course supports the local economy and Parklands, generating \$17m+ annually, while fostering community engagement and outdoor recreation.
  - Reducing Moore Park to 9-holes harms not just club members but the broader community that relies on it for health, social connection, and accessible recreation.
  - Reducing Moore Park to 9-holes cuts the ability to play by about 60%, where are those people meant to go considering surrounding courses are either private or at capacity?

### WHY MOORE PARK IS MY HAPPY PLACE

I feel so lucky to have Moore Park as my local golf course. Living in Waterloo since 2014, it's just a quick 10-minute drive away, making it incredibly easy to pop over for a round and

some fresh air. For me, it's about so much more than just golf. It's a cornerstone of my well-being. A few hours on the course is my perfect recipe for a healthy mind and body – its gentle exercise, a dose of sunshine, and a complete mental reset from the hustle and bustle of city life.

It's also a wonderful social hub. I've met fascinating people from all over the world, sharing a laugh with international tourists as we play. More importantly, it's where I've strengthened friendship and created lasting memories with family. It's a place we can all connect, away from screens and daily distractions. That's why the thought of losing 18-holes is so concerning.

Since COVID 19, the demand for tee times has skyrocketed, and the course is always bustling with life. To lose half of this precious green space would mean losing the very thing that makes it so special and accessible. It wouldn't just change the game; it would risk a vital resource for our community's health, happiness, and connection – for us today and for generations to come. Let's keep this beautiful space whole.

## **MOORE PARK SOUTH – DRAFT ESTABLISHMENT PLAN**

**Name:** Name withheld 50

**Date received:** 21 November 2025

---

### Introduction

I am writing as a local resident, daily walker and non-golfer in the Moore Park area to provide feedback on the Moore Park South Vision. I appreciate the opportunity to contribute to this important discussion and share perspective rooted in regular, first hand experience of the parklands and community value.

### Support for Open and Accessible Parklands

I strongly support the overarching themes of the Moore Park South vision, particularly the focus on ensuring open, accessible, and inclusive parklands for all. The emphasis on green spaces and recreational opportunities aligns with the needs of the growing urban population and the well-being of local communities.

### Concerns Regarding Moore Park Golf Club

While I endorse the vision's aims, I wish to express concern about any proposals that may come at the expense of Moore Park Golf Club. The club is a significant community asset, providing accessible sporting opportunities and fostering social connections for a diverse range of people. Its long-standing presence and popularity demonstrate its value to both regular golfers and casual visitors.

### Utilisation of Existing Spaces

Based on my daily experiences, I have observed that many existing spaces – including Moore Park West, Moore Park East, Centennial Park and Queens Park – are not being utilised to their full potential. Large areas often remain underused, during peak and off peak times. There is a clear opportunity to enhance these spaces through better planning and activation, rather than replacing established facilities such as the golf club.

### Green Square Residents and Park Usage

I note that one rationale for redeveloping Moore Park South is to serve the growing population of Green Square. However, it is important to consider the likelihood of these residents utilising Moore Park South, given the distance and availability of more proximate parks and recreational facilities. In my view, strategies should prioritise optimising existing parklands for communities that already frequent them, while accommodating broader regional needs.

### Recommendations for Parkland Optimisation

To maximise the benefits of Moore Park precinct, I recommend a focus on the following;

- Enhancing the use of Moore Park West & Moore Park East through targeted programming and improved amenities.
- Further activation of Centennial Park and Queens Park, which offer ample space for recreational activities.
- Retaining Moore Park Golf Club in its current form, given its unique contribution to the area and the broader sporting community.

#### Support for Family Facilities

I strongly support the introduction of additional family-oriented activities, such as a putt-putt golf course and an enhanced children's play area. These initiatives would provide accessible, enjoyable options for families and young people. Importantly, such facilities could be accommodated by reconfiguring underutilised spaces, for example, the area adjacent to the tennis courts – rather than reducing the footprint of the golf course.

#### Conclusion

In summary, I commend the NSW Government for its commitment to open and accessible parklands. I respectfully urge that this vision be realised through the full utilisation and optimisation of existing park spaces, while preserving the valued amenity of Moore Park Golf Club. By enhancing current facilities and introducing new family friendly features in underused areas, the Moore Park precinct can continue to serve the diverse needs of the community for generations to come.

## MOORE PARK SOUTH – DRAFT ESTABLISHMENT PLAN

**Name:** Name withheld 51

**Date received:** 20 November 2025

---

I live in Neutral Bay, and I have been using Moore Park Golf for 26 years. I visit to play golf with my friends and colleagues of Moore Park Golf. Moore Park Golf is important to me because I work full-time and have part-time elderly care responsibilities, playing golf once a week with friends is my only outlet for relaxation and recreation. Playing golf on a full blown (18 Hole) golf course is important to provide great relaxation time as well as competition to improve my game and also self-confidence. It is also a great place for socialising and venting the anxieties and frustrations of daily life. When I joined back in 1999, it was very difficult to find a golf course that was accepting of women, beginner golf players and also players from different socio-economic and cultural backgrounds. Moore Park ticked all the boxes for me and still does for many different people who continue to join to this day for the same reasons.

I am concerned about the proposal to reduce the course to 9 holes. In my view:

- The golf land should be used to **maximise the number of playable holes and public capacity**, not reduce it.
- The current design **lacks innovation and imagination** and does not reflect modern public golf planning.
- Golf participation is growing, and Moore Park is one of the **few affordable public courses** accessible to everyone in Sydney.
- My **mental health will diminish** in playing 9 holes instead of 18, my long time friends from golf will disperse and the place will become a very transactional recreational location
- There is **already substantial recreation and open space in the precinct** that can be used for enhanced community use and the Moore Park golf course is not a suitable location for additional community space

I respectfully ask that the NSW Government:

- Works with the golf community and leading golf architects to design a layout that **maximises playable holes ideally 18 holes, safety and community access**.
- Delivers a plan that **supports the booming public golf community**, not reduces it.
- **Addresses the inequity to age, gender, cultural diversity at most other golf course** around the similar area in Sydney, Moore Park is affordable, is open to all ages, genders and cultures in the community
- **Reallocates the funding to more worthy causes within the community** where there is a need ie hospitals, housing , improved transport around broader Sydney

Thank you for considering my submission.

## MOORE PARK SOUTH – DRAFT ESTABLISHMENT PLAN

**Name:** Name withheld 52

**Date received:** 23 November 2025

---

I write in strong support of the Moore Park South Establishment Plan and commend the NSW Government and Centennial Parklands for progressing the transformation of this area into high-quality, inclusive public parkland.

This proposal responds to the growing need for accessible green space in one of Australia's most densely populated urban areas and reflects a thoughtful balance between nature, recreation, community wellbeing and connectivity.

### Overall Support

I strongly support:

- The creation of a large, high-quality public park
- A focus on community-centred recreation and wellbeing
- Retention of a reduced golf offer, while prioritising broader public use of the space

While I respect the retained golf components, my primary interest is in the community and active recreation elements of the plan, which I believe deliver the greatest long-term public value.

### Connectivity – Key Recommendation

I strongly encourage the inclusion of a grade-separated connection (an overpass or underpass) between Moore Park South and Centennial Park.

This would:

- Enable safe, uninterrupted pedestrian and cycling movement
- Reduce reliance on traffic lights and road crossings
- Improve accessibility for children, families and people with mobility challenges
- Enhance the sense of a continuous, connected regional parkland

### Priority Community Facilities

I strongly support delivery of:

- A bike pump track
- A high-quality playground
- A water play area
- A multi-use playing field
- Rebound wall infrastructure for informal sport and skill development

These facilities are essential for:

- Children and youth health
- Informal community sport
- Families living in higher-density housing

Closing Statement

I strongly support the Moore Park South Establishment Plan and encourage its timely delivery.

I ask that serious consideration be given to:

- A bridge or tunnel connection between Moore Park South and Centennial Park
- Delivery of the community recreation facilities outlined above
- Prioritising broad community outcomes across the park

## **MOORE PARK SOUTH – DRAFT ESTABLISHMENT PLAN**

**Name:** Name withheld 53

**Date received:** 12 November 2025

---

The proposed new 9 hole layout for Moore Park is very poorly designed and severely lacks basic safety requirements. The government must withdraw this abhorrent plan (that would be a waste of millions of tax payers dollars during a cost of living crisis) and instead consider the club's alternate proposal - to maintain an 18 hole golf course whilst also addressing the desire for more public recreational park space.

The new flow of holes was clearly not designed by anyone with golf course knowledge or golfing ability. By forcing the first 3 holes into a space that is originally just the 11th hole, the designer has A) made this a significant downgrade in terms of a quality golfing experience that we have come to expect from the world class course currently at Moore Park and B) made it unsafe for players on each fairway given they are so cramped in. There is also the lack of safety regard for members of the public who are supposed to share this space in close proximity, with wayward tee shots being a danger to the public. This is simply not good enough for such a premier golfing location such as Moore Park in Sydney's inner city.

The additional recreational space the government is asking for (but clearly wants to re-zone in the near future for high rise apartments) is not even required given the vast abundance of park space already present at Moore Park North, Moore Park East, Bat and Ball Oval and in the nearby Centennial Parklands (a park area that is so big that there is a suburb named after it...). Most of which I might add, is usually empty. The underutilisation of these parks is a clear indicator that bulldozing Moore Park's beloved golf 18 hole course would be a complete waste of money and time. I would suggest the Government looks at old brownfield industrial sites in the nearby areas of Zetland, Alexandria and Mascot to add more green areas and parklands - where they are actually needed.

Moore Park is the most popular golf course in Australia that is not used by the elite or rich, it is for the common man, a great grass roots club for children and women and a significant generator of tax for the City/State. By removing 9 holes, players will have no affordable golf clubs in the near proximity to play or learn at - with the nearest being highly prestigious courses such as The Australian and The Lakes, and the nearest public course being Eastlakes which has a massive waiting list and newly hiked fees that are 3x the membership costs of Moore Park.

The government needs to listen to the people, not the greedy that hold vested interests of the underlying land and who seek to profit from its future development. The proposed changes are a travesty and must be scrapped.

## MOORE PARK SOUTH – DRAFT ESTABLISHMENT PLAN

**Name:** Name withheld 54

**Date received:** 24 November 2025

---

For most of the last 15 years, Moore Park has been part of my everyday life. I've lived within walking distance, and I've spent countless mornings and afternoons running through the parklands, exercising, clearing my head, and feeling genuinely connected to this part of Sydney. It has been a constant for me through work, relationships, marriage, and now motherhood. Moore Park is not just a green space I pass through it is where I have built memories, friendships and a first date spot with my now husband.

It is also where I learned to play golf. In my early 20s, I started at the Moore Park Driving Range with my girlfriends — a group of young women who didn't know a thing about golf but loved the atmosphere and the feeling of doing something new together. Over the years I progressed from the range to the short game area with one of the coaches, and eventually to playing full 18-hole rounds with my husband. That journey was only possible because Moore Park offered an accessible, affordable, welcoming public course in the heart of the city. Without it, I would never have become a golfer, and I know many women feel the same.

That's why I cannot understand why the Government wants to reduce the course to 9 holes. The 18-hole course is always full right up until dusk with people of all ages, backgrounds, and skill levels using it every single day. Meanwhile, so much of the surrounding Moore Park Parklands, especially the eastern and western edges, sit empty most days. It makes no sense to take capacity away from the asset people are actually using, while leaving untouched the areas that are rarely used at all. It feels like a decision made without truly listening to the people who spend real time here.

I am also incredibly disappointed and worried about the Establishment Plan as a whole. The redesign of the course is poor and seems to needlessly reduce the ability for people to play and learn. As a new mum, I can't help but feel heartbroken thinking that my son may not get the same opportunity I and his father had to have an accessible public golf course close to home where he can learn, play, and belong. I want him to have the chance to fall in love with sport in a place that is safe, welcoming, and accessible. Losing the 18-hole course threatens to take that away from the next generation.

I'm also deeply concerned by many other parts of the plan. The proposed children's playground is placed alarmingly close to South Dowling St and the off-ramp. As a mother, I would never feel comfortable taking a pram or a toddler to a playground in that location. It simply isn't safe, it smells of car fumes and is too noisy. The idea of building new sports fields and other facilities on an old rubbish tip is worrying too. The thought of earthworks disturbing contaminated ground is unsettling and deserves far more transparency and caution than what has been shown so far. And the new car park off Dacey Avenue would only make an already congested area even more chaotic, creating more traffic, more frustration, and less safety for everyone.

What troubles me most is that this plan doesn't reflect how the community actually uses Moore Park. Those of us who live here, exercise here, and play here know it better than anyone. We see the current golf course full every day. We see the unused parklands sitting empty. We understand the traffic, the noise, the safety issues, and the obvious reality that this is about politics and not the people. That's why this proposal feels so disconnected from real life. It feels like something being done to the community rather than for it.

Moore Park has shaped my life in so many ways. It's where I feel at home, where I found a sport I love, and where I hope my son will one day learn to love the parklands the way I do. I genuinely believe the Government can do better than what is currently proposed — better for safety, better for recreation, and better for the people who rely on and value this place. I urge the Government to keep the 18-hole course, to rethink the unsafe and poorly placed proposals, and to listen to those of us who know these parklands not from a map, but from living our lives in them every day.

## MOORE PARK SOUTH – DRAFT ESTABLISHMENT PLAN

**Name:** Name withheld 55

**Date received:** 13 November 2025

---

I am concerned about the proposal to reduce the course to 9 holes. In my view:

- The golf land should be used to maximise the number of playable holes and public capacity, not reduce it.
- The current design lacks innovation and imagination and does not reflect modern public golf planning.
- Golf participation is growing, and Moore Park is one of the few affordable public courses accessible to everyone in Sydney. If you review waiting lists for golf courses in the south of Sydney – eg Hurstville, Barden Ridge etc you will note that **membership is closed**.
- I have on many occasions walked across the existing parks in that area and they are not utilised at all. There is already significant green space that is available to the public.
- I respectfully ask that the NSW Government:
- Works with the golf community and leading golf architects to design a layout that maximises playable holes, safety and community access.
- Delivers a plan that supports the booming public golf community, not reduces it.
- Suggest ways to get residents to use the existing green space/parks that are already available around the Moore Park area.

Thank you for considering my submission.

## MOORE PARK SOUTH – DRAFT ESTABLISHMENT PLAN

**Name:** Name withheld 56

**Date received:** 28 October 2025

---

Thank you for the opportunity to respond to the Moore Park South Establishment Plan.

As a local Randwick resident I currently use the precinct on a regular basis. I commute to work via bike (using Resch's Bridge). I visit the Driving Range on a monthly basis and play the 18-hole golf course ~5 times per year. My kids play AFL for the Moore Park Tigers and use Bat & Ball Field. I drive my car and utilise the car park for Golf activities and for AFL training and game days at Bat & Ball Field.

I'd like to reiterate my strong objection to demolishing the 18-hole golf course at Moore Park. There is sufficient and underutilised parkland at Moore Park West and Centennial Parklands is a stone's throw away for local residents to walk and cycle and has sufficient parking facilities for recreational users.

If the NSW Government proceeds with the redevelopment, I have a number of concerns with the Establishment Plan on exhibition.

### 1. Parking & Traffic

The Establishment Plan provides no details on the expected change in cars and traffic at the Moore Park Golf Course parking lot. The current situation already has bottlenecks and full capacity on AFL training and game days. With the addition of the expanded driving range, 18 hole mini golf course, community sports field, sports courts, recreational areas, pump track and various other amenities it is unrealistic to not plan for additional cars to utilise the car park.

The Establishment Plan also shows a new pathway crossing the car park, so I assume that would reduce the number of existing car parks.

Given the absence of any Traffic Impact Study and any plans to increase the capacity of the car park, the new proposal should be rejected based on a failure to adequately plan for additional cars.

The Establishment Plan should clearly analyse the additional car spaces required to cater for the new infrastructure and amenities and plan to upgrade the car park to provide sufficient space for existing and new users of the precinct.

2. Golf Course Redesign I have a number of recommendations to change the proposed golf course design to improve playability:

- The par 3 2nd hole is too long at 215m, this hole should be reduced to 180m maximum. If the intent is to reduce bottlenecks, a long par 3 is the worst possible option because beginner players will be slow to reach the green and better players will wait for the green to clear.
- Retain the existing par 3 5th hole, it's the most picturesque hole on the course. Please don't remove this hole. Retain the hole as an optional hole 4A.
- Retain the existing par 3 7th hole and rebadge as hole 7A, an optional hole, perhaps at a reduced length (110-130M) short iron.
- The addition of optional holes 4A and 7A (by retaining holes 5 and 7), will make the course a much more attractive course for competition, recreational and corporate golfers:
  - Allows more Nearest To Pin (NTP) opportunities. The existing layout only has one very long par 3 for NTP which makes it unattractive for groups and corporate golf days.
  - Golfers have three Par 3 opportunities of different lengths: a long iron (hole 2), a mid iron (hole 4A, previous hole 5) and a short iron (hole 7A, previous hole 7). This will most benefit junior and beginner golfers who prefer shorter holes to learn on.
  - Holes 4A and 7A can be clearly sign-posted as "optional" holes, meaning members and competition rounds can skip those holes for faster play (they usually play 18 anyway) and on busy days recreational golfers looking to increase pace can also skip 4A and 7A.
  - 11-hole golf course provides an attractive prospect for recreational golfers that don't want a full 18.
- I support the expansion of the driving range and the mini-golf course. I think the mini-golf will be an attractive activity for families. However, both will add to the parking burden and the Establishment Plan should cater for the additional traffic. I look forward to the NSW Government responding to the concerns of the community.

**MOORE PARK SOUTH – DRAFT ESTABLISHMENT PLAN**

**Name:** Name withheld 57

**Date received:** 10 November 2025

---

I strongly oppose the proposal to reduce Moore Park Golf from 18 holes to 9 holes. Moore Park Golf is one of Sydney's few full-length public courses that offers affordable and accessible recreation for a wide range of residents and visitors.

Reducing it to only 9 holes would significantly diminish the park's recreational, cultural, and social value. A 9-hole course cannot deliver the same sporting satisfaction or competitive experience as an 18-hole layout. It would also reduce opportunities for community events, tourism, and local engagement that currently thrive around the full course.

From an economic perspective, this proposal may actually increase inefficiency. Fixed operational costs such as staffing, maintenance, and clubhouse facilities would remain largely the same, while revenue from memberships, green fees, and events would decrease. This creates a negative financial and social return, rather than saving public funds.

Moore Park Golf already coexists harmoniously with Centennial Parklands and provides a vital green space for thousands of Sydneysiders. Instead of reducing its size, the government should focus on improving access, sustainability, and community integration while maintaining the 18-hole layout.

I respectfully urge the Greater Sydney Parklands to reconsider this plan and preserve the full 18-hole course that has served the city and its residents for generations.