

**THE FUTURE OF MOORE PARK SOUTH – EARLY ENGAGEMENT**

**Name:** Peter Cudlipp

**Date received:** 9 April 2024

---

Please leave Moore Park Golf Club alone.

There is an abundance of parkland in the vicinity.

This is money that does not need to be spent.

If you really need to spend money, maybe find a way for more pedestrians to get across the freeway to more points.

## THE FUTURE OF MOORE PARK SOUTH – EARLY ENGAGEMENT

**Name:** Alan Cunningham

**Date received:** 22 March 2024

---

When is the likely usage of this proposed park?

By how many people?

Maybe

After 6pm weekdays

On weekends?

Why are we ripping up the golf course?

Have we considered the St Andrew's model?

If you are a non-golfer, have members of your group that don't play or are simply having a well-earned rest from the rigours of the fairways, then St Andrews has much to offer. One of the nicest things about St Andrews is you can simply stroll out, no plan in mind and wander

\*\*\*

Why is St Andrews closed on Sundays?

St Andrews Links Blog

A famous and historic tradition, Sunday golf has never been permitted on the Old Course. Some exceptions are however made for important golfing events and filming. Historians trace its Sunday closure to religious laws dating as far back as the 16th century.

## **THE FUTURE OF MOORE PARK SOUTH – EARLY ENGAGEMENT**

**Name:** Robert Day

**Date received:** 8 April 2024

---

As a local resident I do not support the proposed reduction of Moore Park Golf Course to 9 holes. I believe that not enough consideration has been given to ways the golf course can be left as 18 holes and the needs of the community for more parkland can be met.

I am a regular user of Centennial Park and on weekdays the only part of the park used is the circular walking and bike tracks with the rest of the park mostly deserted. If the same pattern occurs there are currently many more golfers using Moore Park GC Monday to Friday than there will be people using a new park.

I believe that a new walking track should be built around the golf course with appropriate safeguards as this will be the feature most people will use. This can be available 7 days a week. A good example is the fairly new walking track through NSWGC at La Perouse. On weekends when more access to green space is actually required golfers could be stopped from using the area say midday Saturday to Monday am with protection for the greens. A dual use proposal allows both local residents and golfers to access the area at different times to maximise usage.

Much of the Centennial Parklands is currently poorly maintained and a no doubt a large new park will add further budget pressures. Dual use will allow for shared costs and better maintenance and provide a better amenity for park users than what is likely to be the case.

18 hole public golf courses are a scarce commodity in the city and are a valuable sporting resource for people who can't afford or want club memberships. Moore Park GC is a very highly used facility by locals, visitors and juniors that should not be lost. Once gone it is gone forever and I strongly support trying a dual use proposal before removing 9 holes.

A further proposal is to move the AFL ground north to the underutilised area between the light rail station and EQ, allowing more parkland to be opened up.

**THE FUTURE OF MOORE PARK SOUTH – EARLY ENGAGEMENT**

**Name:** Nick De Cean

**Date received:** 28 February 2024

---

What an absolute disgrace.

I take it from glancing at that document that the decision to demolish 9 holes is a given, and won't be reversed, and rather, the document is about best way to reuse the space, not a document about the virtues of reusing it or not.

Centennial Park is right next door. There is more than enough space for people to recreate in there.

Leave the golf course at 18 holes, otherwise you can forget people wanting to play 9 holes – its like being half pregnant – it doesn't work...

When is the next election. Please tell me a change of government will reverse this decision

**THE FUTURE OF MOORE PARK SOUTH – EARLY ENGAGEMENT**

**Name:** Melissa Dean

**Date received:** 02 April 2024

---

I would like to say leave well alone.

This was obviously going to happen sooner or later as it is way to beautiful and pristine to be left alone.

Leave it as an 18 hole golf course, find something else to ruin, as a neighbour to the golf course once upon a time I spent a lot of time there, the wildlife will be disturbed, leave them alone. Once you bring the greater public to an area, rubbish, erosion, disturbance, please think about the seriousness of this decision.

**Submission  
No. 106**

**THE FUTURE OF MOORE PARK SOUTH – EARLY ENGAGEMENT**

**Name:** Jo Dean

**Date received:** 7 April 2024

---

Please find my submission regarding the future of Moore Park South attached.

## Moore Park South Submission

Dear Minister Scully,

As a local long-time resident and daily user of Moore Park, and parent of active teenage children I have two key proposals regarding the future use of Moore Park South:

1. The inclusion of a Mountain Bike Jump Park
2. Suitable pedestrian and bicycle access to the park across the busy arterial roads of Anzac Parade and the Eastern Distributor.

### 1. Proposal for inclusion of a Mountain Bike Jump Park

As the parent of an active teenage boy, with an enduring passion for mountain biking (MTB) and mountain bike jumping, I would welcome the addition of an **all-ages MTB Jump Park** to the redevelopment of Moore Park South to complement existing sporting facilities in this area.



*Example: Castle Cove Jumps Track, Castle Cove, NSW (Google)*

#### Lack of MTB facilities in the City of Sydney area

- There is no facility for MTB jumping anywhere outside of the northern suburbs of Sydney.  
The closest similar facility is in Castle Cove (small), or Bare Creek MTB park in Belrose (expansive) in

the northern suburbs, or further south Greenvalleys Bike Park (very expansive) in the Illawarra region  
– all of which **are inaccessible by public transport with a bicycle.**

- The Moore Park Discussion Paper notes that “Centennial Parklands... currently boasts over 120 community sports facilities accommodating over 30 different sports including golf, cricket, athletics, equestrian, tennis, soccer, netball, basketball, rugby league, rugby union and AFL.” **Mountain Biking, however is actively discouraged** forcing young MTB enthusiasts to travel the considerable distances mentioned above to engage in this excellent skills-based outdoor past-time, invariably **relying on a parent to drive otherwise independent teens.**

### **Minimal amount of space required**

- **MTB jump parks don't need a great deal of space**, say 50 x 100m. The Castle Cove Dirt Jumps Park, a council run facility, is located on a small plot of land adjacent to Castle Cove Park with a run only 71 metres in length, top to bottom.
- Carving out a small space in Moore Park South for a facility that **caters to beginners through to experts** – with different height jumps – would allow local children, teens and adults to **develop this exciting skill, challenging themselves** as they might on a skateboard or scooter at Sydney Park which is an excellent facility for those sports.

Note – a single MTB trail (as opposed to jumps) snaking back and forth throughout Moore Park South could also be incorporated and would be welcomed by MTB riders of all ages looking for trail riding experience.

### **Suitable topography**

- The hilly **topography of Moore Park South lends itself to a gravity based activity** such as MTB jumps and avoiding the need for large scale earthworks.
- Ideally the area adjacent to the existing Eastern Distributor pedestrian overbridge would provide an excellent space for a jump park.
- Dirt jumps are not by their nature attractive features in the landscape, however, creative landscaping around the jumps could offset any perceived unattractiveness. See the Castle Cove example nestled into the surrounding bushland.

### **Buffer Zone**

- Pedestrians and picnickers are unlikely to favour spaces close to busy Anzac Parade and the Eastern Distributor. A MTB jump park would be a suitable use of these outer spaces **activating the space and creating a buffer between internal parkland and heavy traffic** on these arterial roads.



## Infrastructure and maintenance

- **Does not require any infrastructure** beyond the dirt jumps themselves and maybe some concrete seating.
- **Does not require any extra security** and can be available to the public 24/7, similar to a skate park.
- **Maintenance of jumps** could be managed by Centennial Parklands together with volunteer groups.

## First Nations

- Engaging a trail builder such as Trailscapes (who created the Castle Cove facility) actively work with First Nations people in order to respect and celebrate the land upon which the jumps are built.

Creating an all-ages MTB jump park would provide a welcome sporting addition for those interested in **developing their bike skills**.

*2. Proposal for pedestrian and cycle access overleaf*

## 2. Suitable pedestrian and bicycle access to the park across the busy arterial roads of Anzac Parade and the Eastern Distributor

Improved pedestrian and cycle access to Moore Park South from both the east and the west will be essential.

- Better access from the western side could be achieved by creating a **wide purpose-built pedestrian and cycle path across South Dowling Street/Eastern Distributor** at either a continuation of Potter Street, Waterloo (around the existing industrial relics), or a continuation of Corning Park, Waterloo (where there is pedestrian only access to South Dowling Street.)
- Better access from the eastern side could be achieved by creating **wide purpose-built pedestrian and cycle path across Anzac Parade**. It could be located near the existing Moore Park Golf Club building where the topography is elevated and span across to the forecourt of the Centennial Parklands Sporting Centre (the entrance to Federation Way). This would allow complete connectivity of Moore Park South from East to West across busy Anzac Parade.
- **Redirecting pedestrian footpaths away from busy roads**, ie Anzac Parade and Dacey Avenue, particularly near the existing council depot is essential where the current situation is narrow, unpleasant and dangerous.
- **Reducing the tree canopy along Dacey Avenue** would improve light and safety. A **widened elevated walkway** (similar to that adjacent to the Kensington Ponds in Centennial Park) above the existing narrow bumpy path along Dacey Avenue would protect the significant tree root systems and provide a much better pedestrian and bicycle experience.
- **A connected walking/cycle loop – inset from its borders – around the whole of Moore Park South** with major access point around the park would provide great amenity to all users (similar to Centennial Park's Grand Drive walking path).
- Apart from some selected picnic areas perhaps, it would be wonderful to **designate the whole park as an off-lease dog zone** (similar to Sydney Park). The number of dog-owners in the local area would likely be in the thousands and this would be a very special place to enjoy with our dogs.

Kind regards,

[name and contact details withheld]

*Proposal map overleaf*

Proposal map



Existing pathways

Proposed pathways (approximate)

Proposed MTB Jump Park options (approximate scale only)

## Appendix – Existing Mountain Bike Jump Parks

### Case Study 1

#### Castle Cove Jumps Track, Castle Cove, NSW

<https://www.willoughby.nsw.gov.au/Residents/Parks-and-recreation/Parks-reserves-and-playgrounds/Castle-Cove-Jumps-Track>

Holly Street, Castle Cove 2069 [View Map](#)

Managed by Willoughby Council

The Castle Cove bike facility features a section of runs that cater for intermediate to expert riders.

Features of the track include:

- 5 steel and wood ramps on the expert line
- berms
- table tops
- a range of small-medium jumps

The track was upgraded in 2016 by TrailScapes.

TrailScapes is a leading trail building company in Australia, and an industry leader in the planning, design, building and maintenance of sustainable trails Australia-wide and world-wide. They work with Traditional Owners to further understand how to navigate the landscape with respect and appreciation. “The land owns you and the land tells the stories of how you need to look after country.”



## Case Study 2

### Bare Creek, Belrose, NSW

2819 Crozier Road, Belrose NSW 2085

<https://www.northernbeaches.nsw.gov.au/things-to-do/recreation-area/bare-creek-bike-park>

The park features 1.6 kms of downhill bike trails, flow trails, skills and dirt jump areas, a pump track, walking trails, a dedicated access road, as well as toilets, drinking fountains, bike maintenance stations.



### Other examples in Sydney:

The Grove in Seaforth run by Manly Council

<https://nobmob.com/rides/thegrove>

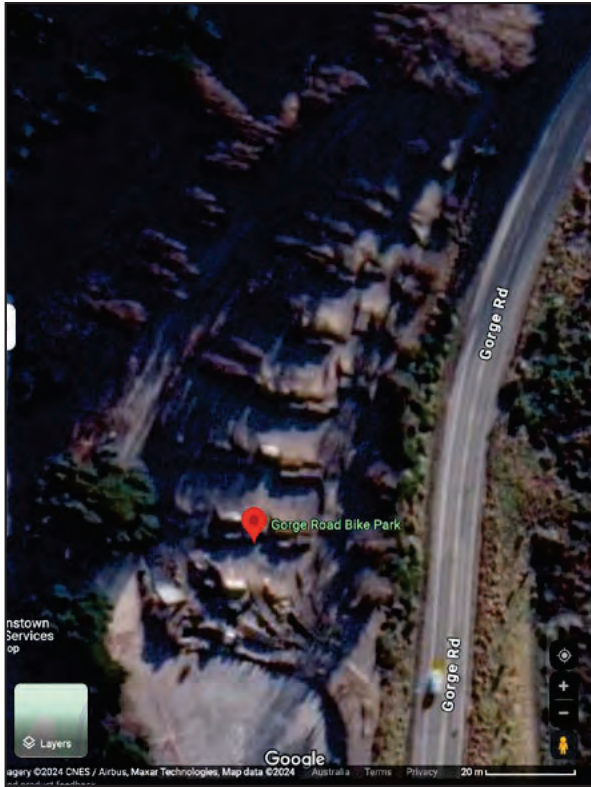
Jubes Bike Park in North Turramurra run by Kuring Gai Council

<https://www.krg.nsw.gov.au/Things-to-do/Sport-and-fitness/Mountain-biking/Jubes-Mountain-Bike-Park>

Other international examples:

Gorge Road Bike Park, Queenstown, NZ

<https://www.queenstownnz.co.nz/listing/queenstown-mountain-bike-club/9254/>

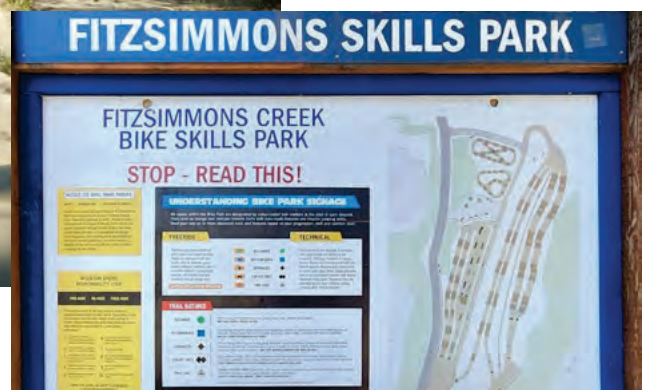


Gorge Road Bike Park,

Google image demonstrates minimal land required

Fitzsimmons Bike Park, Whistler, BC, Canada

<https://www.whistler.ca/culture-recreation/facilities/bike-park/>



**Submission  
No. 107**

**THE FUTURE OF MOORE PARK SOUTH – EARLY ENGAGEMENT**

**Name:** Griffin Dean

**Date received:** 9 April 2024

---

See attached submission

# Moore Park Mountain Bike Dirt Jumps

---

Dear Minister Scully,

As a local Redfern 16 year old, aspiring mountain bike rider who loves progressing my tricks on my bike, I strongly believe in the addition of a small dirt jump park in Moore Park. To be able to ride good jumps, I need to travel long distances to the Northern Beaches and Tongarra, NSW (near Albion Park), which are only accessible by car. There are no mtb parks or jumps in the central suburbs of Sydney whatsoever, excluding thousands of kids who love mountain biking from being able to independently get themselves to where they like. City of Sydney council actively discourages mountain bikes in Centennial Park lands and surrounding, resulting in increasing numbers of DIY jumps being dug up by kids who have no facilities to support them. An inclusion of a small mountain bike park featuring progressing skill level of dirt-to-dirt jumps, a large trick jump and flow trails would be the only solution to stopping illegal jump digging and would be a safe space for kids and young teens to stay physically active while being outdoors.

## What We Want

Young kids, teenagers and even adult mountain bikers desire a small (minimum 100x50m) mountain bike park catering for all skill levels and types of riding. We want a soft trick jump featuring a dirt or wooden ramp with a higher elevated dirt landing with a layer of mulch or soft dirt packed on top. Mulch landings are a great way to make landings softer, increasing safety. (mulch step-up trick jump)





Kids also want jump trails with consecutive dirt jumps to work on style and tricks while having a lot of fun. To support all different skill levels there should be a small dirt jump line in addition with a bigger line for more advanced riders. These lines should have berms (turns) and steep lips and landings with at least 3+ jumps. It would also be fantastic to have creative features such as a hip jump and windy berms.



hip jump



Lastly, many riders also enjoy riding flow trails which are fast, windy and steep. There should be at least one flow trail that can enable riders to go fast and take turns (berms), the trail should utilize features like drops berms and some jumps, however, isn't jump centered.

## Key Points

- No Existing Facilities  
Centennial Park precinct boasts over 120 different sporting fields catering for 30 sports, according to their website, however mountain biking is not one of them, and is actively discouraged by rangers telling kids to move on when riding spots in Centennial Park, such as "half pipe", near the top reservoir. Due to there being no bike accessible public transport up to the Northern Beaches, kids who love riding, must instead wait until their parents are willing to drive them at least 40 minutes each way to the nearest facilities up in the Northern Beaches, not allowing kids to utilize their independence. As most parent don't want to always be driving their kids to far away mtb parks, many won't have a proper outlet for the sport they love and in turn, their progression will be drastically limited. As a kid, aspiring to become the best I possibly can and learn all the tricks on my bike, I feel severely let down by my local council as I can't ride every day and accomplish my goals.

- Other councils offer small bike jumps.

There are many examples of other councils offering dirt jump facilities for kids and teens to ride. The two best examples of council operated bike jump parks are Jubes Bike park, constructed by the Ku Ring Gai council in North Turrumurra and Castle Cove bike park, constructed by Willoughby council, in the Northern Beaches in a pocket park. These public mtb parks enable kids and teens in these areas to participate in the sport that they love while the space taken up is minimal and intruding on nobody. These parks are built by specialist trail builders and are maintained by the council as well as the riders, who always are enthusiastic to grab a shovel and a watering can, to keep the jumps running well. As a result of kids having a designated space to ride and maintain the jumps, a strong sense of community and sense of self between each other and the land, this would be very beneficial for the growing communities based around Moore Park.

- Small Area Required

Using Castle Cove dirt jumps as a good example, the amount of space required for a bike park in Moore Park would be minimal, especially within the 20 new hectares of Moore Park. The total length of Castle Cove is just 71 meters, *TrailForks, 2021, [trailforks](https://www.trailforks.com)*. A suitable mtb park featuring progressing skill level of dirt-to-dirt jumps, a large trick jump and flow trails can fit within a 100x50 meter area.

- Buffer Zone

This dirt jump park would act as a buffer between park users and unpleasant, heavy traffic on Dacey Avenue, South Dowling or Anzac Parade. All park users: dog walkers, picnic goers and kids wouldn't stay in and utilize most spaces right on the perimeter of the park due to noise and dangerous traffic, instead opting to travel within the park. This dirt jump park would be a great use of otherwise unused space while acting as a physical, visual and audible buffer for park uses, adding to the enjoyable vibe of the park.

- Effective Use of Topography

The dirt jump park would be most material efficient and fun if the topography of hills and dips are used as the canvas of the trails, helping with gravity, speed and dirt used. The topography of Moore Park would be best utilized if the trails and the run in for the trick jump start at top of hills, with each line leading down to the bottom.



## Conclusion

In conclusion, many young kids and teens need a facility to allow them to ride their bikes and do jumps and tricks! Skateparks are filled with small toddlers and skateboarders who don't appreciate the presence of bikes. We need a place to jump, within the extension of Moore Park would be the perfect place for it. Our local council actively discourages our sport while catering for many others, this must change to effectively fill the needs of your communities. We DO NOT desire pump tracks as they don't offer jumps and this can be clearly seen by DIY dirt jumps made around them and in Centennial Park, which the rangers have to spend time on destroying.

## THE FUTURE OF MOORE PARK SOUTH – EARLY ENGAGEMENT

**Name:** Frank Dempsey

**Date received:** 5 April 2024

---

I believe this golf course open space should remain as it is. Why stuff up one of the oldest and historically significant golf courses in Australia.

There is ALREADY plenty of open space for any form of passive or active pursuit available.  
Green space

The area bounded ALL the way along the M1 from Anzac Parade Paddington all the way down the M1 to Toddman Avenue Randwick. This is open space. Then all of the open space on the other side of Anzac Parade is also open space. HUGE amount of open spaces for any activity.

Also almost connected to this HUGE area listed above are the

1. Centennial Parklands
2. Central Parklands Playing Fields
3. Moore Park Tennis Club.

Flowing through to

4. Queens Park and
5. Queens Park Playing Fields
6. Marks Athletic field

Public space

Also Moore Park Golf Course is a PUBLIC Golf Course. This is not a course for the privileged as stated in your advertising. Most of the other golf courses in the eastern suburbs are private and the general public cannot just walk up and demand a game.

I think this is blatant government overreach, a grab for political kudos and is attempting to drive attention away from this area's continuing overdevelopment by government.

Leave this historically significant public area alone.

## **THE FUTURE OF MOORE PARK SOUTH – EARLY ENGAGEMENT**

**Name:** Rob Dobner

**Date received:** 23 March 2024

---

Please find attached a sketch showing a proposal for separate cycle and pedestrian pathways in the new park.

I am a long term resident of Moore Park Gardens and usually walk in the Parklands with my wife several times in a week. There is often a conflict with the bikes when we are in Moore Park South, especially at peak hours when the cyclists want to get there fast. Also as seniors, we would take our preschool grandchildren there more often if there were safe cycle-free paths to walk on.

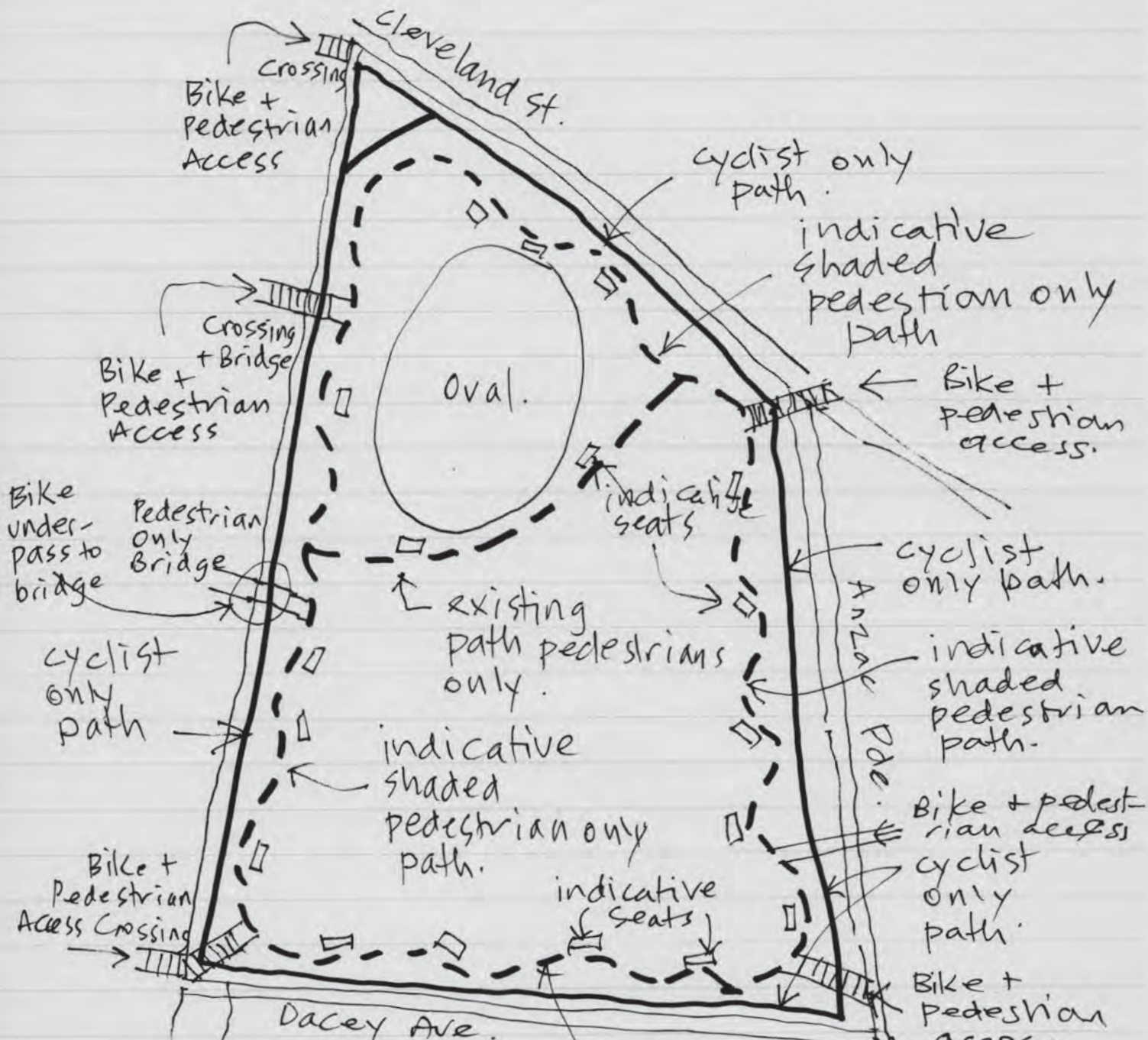
The shared cycle and pedestrian access to Moore Park South via the pedestrian bridge over South Dowling Street, linking Edmond Resch Reserve and Moore Park South is a disaster. People using the Reserve very often have dogs and small children, and they can be elderly people using canes or walking frames, or people recovering from illness who can only safely get to that reserve for some fresh air and greenery, but the bike access makes it unsafe. In addition there is a preschool whose entrance is onto the shared path, so there are many people with prams and small children using the path as well.

As a result I think the bridge over South Dowling Street to Moore Park South should be a pedestrian only link to separate shaded pedestrian paths in the Park. An upgraded cycle path around the perimeter of the Park could pass under the pedestrian bridge. Cycle access to the Park along South Dowling Street would be via the existing road level crossings.

A separate shaded pedestrian path around the perimeter of the Park would provide an additional safe route for walkers and runners, seats could be provided in scenic spots.

The separate pedestrian and cycle paths would allow families and small children and walkers and runners to safely access the park and any new facilities to be provided, by foot, not by car and would also allow cyclists to have a pleasant uninterrupted route around the Park for commuting and exercise.

We love the Parklands and use them often, this proposal would make our joy complete!



**IDEAS FOR NEW PUBLIC PARK  
WITHIN MOORE PARK  
SEPARATE CYCLE + PEDESTRIAN PATHS**

Paths to be separated by suitable barriers, planting and signage

## THE FUTURE OF MOORE PARK SOUTH – EARLY ENGAGEMENT

**Name:** Charles Dodgson

**Date received:** 10 April 2024

---

I'm a long term resident of Kensington and a cyclist. I am very excited about finally turning the southern portion of Moore Park Golf Links into a public park. It has been alienated from me for my entire life. I look forward to being able to cycle safely from Kensington to Waterloo/Redfern and connecting with the city's excellent cycleway.

In the 1970s, as a student at Sydney High, I was forbidden from riding to school because it was deemed "too dangerous." By opening southern Moore Park to the public, school children from south of Dacey Avenue will finally be able to safely access the city.

I don't understand the alternative plan to retain southern Moore Park for golf and turn northern links into a park. That would only service a small portion of surrounding residents, instead of providing access to everyone. And the northern part is already so isolated from residents, except by one small footbridge. It really doesn't make sense.

Anyway, I hope common sense prevailing and the southern portion becomes a public park with north-south corridors on the edges of the northern portion.

## THE FUTURE OF MOORE PARK SOUTH – EARLY ENGAGEMENT

**Name:** Sandy Easterbrook

**Date received:** 10 April 2024

---

The New South Wales Government's "Moore Park South" project is appalling governance. It conflates two important and quite separate issues that should logically be addressed separately and analysed and decided independently of each other.

Worse, the New South Wales Government pretends to invite its public to contribute their views. But it slants the views it asks for and the Discussion Paper it presents to ensure that it obtains only views that reinforce the decision in principle it has already taken. Its presentation does not contain or even mention a single reason to consider the public worth of preserving "Moore Park South" as an integral half of a particular 18 hole public golf course.

As it happens, there are many and unusually compelling reasons to consider that question. The Government, being the long term custodian for the public of the whole 153 hectares of the original public Moore Park area, is well aware of those reasons. And, as that custodian, is duty bound, in asking its public for their views, to present those reasons clearly and without bias for its public to take into account in responding with their views.

The Government's failure to do this has to be its deliberate choice and, as such, is seriously misleading, if not dishonest, and adds disrespect of its public to its appalling governance. In turn, that raises the question whether this deficiency is so material as to undermine the legal validity of the Government's whole "Moore Park South" project.

In future articles, I will examine those reasons and analyse the second issue that the New South Wales Government has conflated with the first- namely the objective the Government has given for its "Moore Park South" project. This will include whether the project is the only or the best way to achieve that objective (it is neither) and even whether it is the right objective in the context of fairness, need and priority (it is not).



**THE FUTURE OF MOORE PARK SOUTH – EARLY ENGAGEMENT**

**Name:** Jacqueline Edwards

**Date received:** 6 April 2024

---

I am writing to express concern at the proposed option of night golf on the proposed 9 hole golf course at Moore Park South.

While I am supportive of the plan to transform the northern half of the park into a public recreational space, I do not support setting up night golf at the southern end. I am a resident at Raleigh Park and would be significantly affected by a proposal to install night golf in the southern end.

The lights and noise that would come with a transition to night golf would significantly affect my quiet enjoyment of my property.

## **THE FUTURE OF MOORE PARK SOUTH – EARLY ENGAGEMENT**

**Name:** Bruce Elliott

**Date received:** 5 March 2024

---

Folks - I cannot understand the arguments to turn 9 holes of Moore Park Golf Course into open parkland space for the 'locals', this is not only laughable it defies logic and common sense.

The course has within its local environ Centennial Park (189 hectares just across the road), Moore Park (total 115 hectares which includes 45 hectares of the golf course), Queens Park (26 hectares), Prince Alfred Park (7.5 hectares) plus many smaller parks within the precinct.

You can drive down South Dowling Street any week day and see how few people there are actually using the existing open space parkland as opposed to the hundreds that are actually playing golf and getting exercise using the existing 'open space'.

Turning 9 golf holes into additional parkland (when there is already in excess of 300 hectares close by) might attract a few additional people daily but that number will be far less than the weekly number of golfers, plus there is an additional council cost to maintain an area that currently costs nothing, so are we to expect higher rates in the future?

If the council is serious about additional 'open space' parkland then why stop at Moore Park Golf Course, the seldom used E S Marks Field should also be demolished and opened up to the public for the same inane reasons.

## **THE FUTURE OF MOORE PARK SOUTH – EARLY ENGAGEMENT**

**Name:** Karen Elvish

**Date received:** 9 March 2024

---

I am a fit 70 year old woman. I have been a member of MPGC for several years and have really valued the facility. Not only does it give me the opportunity to spend time in a natural setting while exercising, it provides me with an enjoyable social setting, so important for mental wellbeing.

If the course is reduced so many club and social members will leave the club, as a nine hole course offers little challenge.

It has been suggested that those who want to play an 18 hole course could join a private club. However unfortunately this is not an option for me as I can't afford the high fees of a private course.

I appreciate that people living close to the course need green space, but surely the landscape designers can reconfigure the available land to accommodate both an 18 hole golf course as well as recreational space.

Please allow MPGC to remain.

## **THE FUTURE OF MOORE PARK SOUTH – EARLY ENGAGEMENT**

**Name:** Nicholas Evans

**Date received:** 29 February 2024

---

The current proposal to redesignate Moore Park South as a public park is misguided and I suspect driven partly by class war fare misperceptions of golf as an elitist sport. The current course is open to all and used by people of all demographics and ethnicities. It is fully utilised from sunrise to sunset, 7days a week. A public park space might get reasonable use on the weekends or public holidays but I suspect that outside those times, it will see very little use. There is already public space on Moore Park North to the west of the golf range and every time I drive passed, there are only ever a few people using it. There is no shortage of public space in nearby Centennial Park. The net effect of these changes will be to destroy Moore Park as a serious golf facility that is fully utilised 24/7 and replace it with space that will only get intermittent busy usage and that's probably a best case scenario.

**THE FUTURE OF MOORE PARK SOUTH – EARLY ENGAGEMENT**

**Name:** Chris Ewan

**Date received:** 10 April 2024

---

I strongly oppose the reduction of Moore Park Golf course to nine holes. The course is an historical icon of Sydney, much loved by locals and visitors. Golf is a game of 18 holes and the Moore Park course is excellent and affordable.

I have lived in the area for over 30 years and never had difficulty finding 'parklands' to use. There is plenty of parks available for the community. There is however very limited options of affordable quality Golf courses.

I hope my voice is heard and this division of the course is stopped.

## THE FUTURE OF MOORE PARK SOUTH – EARLY ENGAGEMENT

**Name:** Roger Faulkner

**Date received:** 10 April 2024

---

I find this proposal hard to swallow when the City of Sydney (as well as the former Redfern Waterloo Authority) has been allowed for several decades now to re-purpose light industrial suburbs into high density residential development without being required to truly address and significantly increase functional green open space provision within these new urban residential developments. This is a significant missed opportunity by consecutive local and state governments who have seen the City of Sydney collect significant developer contributions, which should have been used for the acquisition and embellishment of land for the provision of much more new public passive and active open space than has been delivered.

For decades now City of Sydney Councillors have conveniently argued that Moore Park and Centennial Parklands serve as their resident's backyards, and that they should not have to provide additional open space in their new precincts as this regional open space is on their doorstep. They attempt to justify their open space provision short-comings by spending considerable amounts (largely funded by developer contributions) on renewals and upgrades of their existing small parks to appease recently gentrified communities, whose own demographic changes now require more functional open spaces for larger formal and more diverse organised active and passive recreational pursuits.

The project budgets for City of Sydney small park projects have been the envy of many other inner-city LGA's who have not seen the same scale of new urban development and/or redevelopment, and hence developer contributions, to fund their projects.

I understand the desire of some parties to locate the proposed park on a prime site within Moore Park South in the closest possible proximity to the new residential developments to the west, however I do not see why such a heavily utilised and wonderful golf course should be carved up while there is obviously so much capacity to better utilise large swathes of existing passive open space in Centennial Park and Moore Park for passive recreational purposes.

I believe that retro-fitting existing active open space into 'new' passive open space to justify poor previous open space planning decisions (or lack thereof) seems ridiculously short-sighted, particularly when there are better alternatives.

## THE FUTURE OF MOORE PARK SOUTH – EARLY ENGAGEMENT

**Name:** Garry Ferguson

**Date received:** 07 April 2024

---

The proposal is interesting in that all the pressure on the supply of more free space for Sydney siders, residing in proximity to one of Australia's largest unit development, appears to be being put on the exiting Moore Park Golf Course lands. As reported in your information sheets, the golf course occupies but 12% of the total area of the greater Centennial Park area.

No information has been put forth with regard to potential changes to the adjacent park lands (88% of the area understudy) for coping with this massive increase in the density of population that has been allowed to take place in this area. Basic question would be what was the contribution by the developers of these unit blocks to future green/open spaces for recreation purposes? All the councils in proximity to the existing golf course., as well as the NSW State Government would have received huge development funds, or am I confused on this basic subject?

A quality golf offering such as Moore Park in proximity to the CBD offers an unmeasurable economic value to tourism in Sydney and the rest of Australia. Fact, business people and tourist like to place golf as part of the experience in Sydney. Are you really of the mind that they will accept second class options to spend their valuable time?

I eagerly await your response.

**THE FUTURE OF MOORE PARK SOUTH – EARLY ENGAGEMENT**

**Name:** Louise Ferrier

**Date received:** 4 March 2024

---

Who are the 'stakeholders' you refer to?

If you were concerned about parkland in this area why did you permit so many high rise building there. And the surrounds there are good with trees, ferns etc and open space. The people there are in walking distance of Centennial Park and it's 370 acres. I live opposite Moore Park and walk around the oval there frequently. The only time I have seen many people there it is schoolkids playing school sport.

I don't play golf. However the club there, a PUBLIC club has looked after that land well and caters to many people.

'On going 'indigenous' connection to country'. I have not seen that.

I look forward to a response. Thank you.



**THE FUTURE OF MOORE PARK SOUTH – EARLY ENGAGEMENT**

**Name:** John Fisher

**Date received:** 30 March 2024

---

I am a director of a medium size company. Our company has overseas visitors from China, Singapore and USA. Nearly every visit we have a game of golf at Moore Park. It is very convenient to downtown Sydney hotels where they stay. We have been playing there for over 25 years.

To cut the course in half is ridiculous. Particularly when there is all the parkland and green space around it.

I hope common sense prevails.

**Submission  
No. 121**

**THE FUTURE OF MOORE PARK SOUTH – EARLY ENGAGEMENT**

**Name:** Laurie Fisher

**Date received:** 5 April 2024

---

Can you please advise that NSW Government is prepared to register a caveat on the appropriated golf course land that it can never be used for development of housing, apartments or commercial.

**THE FUTURE OF MOORE PARK SOUTH – EARLY ENGAGEMENT**

**Name:** Steve Fitts

**Date received:** 8 April 2024

---

I write to condemn in the strongest terms, the proposal to reduce the Moore Park Golf Course to 9 holes in favour of a public park. The reasons behind my position are:

1. Any lack of public space is a result of deliberate and poor planning as the higher density housing was being promoted in the area west of the Eastern Distributor. This should be addressed in the LEP for the area and dealt with over time.
2. A reduction from 18 holes to 9 holes is a very major degradation of the site as a golf competition venue.
3. Moore Park Golf Course, as a public course of high quality, close to the city, is a long-standing jewel in the array of public amenities offered to Sydney residents. It has high heritage value in itself.

## **THE FUTURE OF MOORE PARK SOUTH – EARLY ENGAGEMENT**

**Name:** Stef Flegman

**Date received:** 28 March 2024

---

A Google Earth search of the South Sydney area already shows abundant, conveniently located parks of varying sizes for residents.

The proposed new park is 20 hectares, hardly significant to justify not only the lost revenue but also the disruption to the golf club and its players, and the confiscation of half of the existing golf course, adding minimal additional benefit. The overall area of parklands, right next door, of Centennial/Queens Park is 370+ hectares. This parkland already has excellent infrastructure, pedestrian accessibility, vehicle parking, established children's amenity, horse riding, dedicated cycle ways, food and beverage outlets.

Go on any day and there is an abundance of unused and under utilised space freely available.

Being a public course MPGC, at 18 holes, provides the residents of this high density area the additional opportunity to take up a challenging activity other than walking, riding bicycles etc Playing 18 holes at an affordable golf close to their homes would, in itself be an excellent reason the leave the course as it is.

Moore Park GC currently provides active, as opposed to passive, amenity. A worthwhile public recreational pursuit for not only the residents but also overseas visitors to Sydney. My observations, as a nearby resident but non golfer is that during the week, the proposed area is not over populated with leisure seekers crying out that there is " not enough open space" Why? It is available locally and at Centennial/Queens Park, as well as open parkland corner of Cleveland and South Dowling.

MP Golf Course in it's current configuration is in constant use by golfers 7 days per week. Have you counted the numbers?

I believe this proposal is ill thought out and a waste of ratepayers' and taxpayers' funds and should be scrapped.

## **THE FUTURE OF MOORE PARK SOUTH – EARLY ENGAGEMENT**

**Name:** Terry Flitcroft

**Date received:** 6 March 2024

---

There are many parks within walking distance of the golf course area proposed to be made into a public park.

Golf is one sport/recreational activity all ages and genders can undertake either socially and competitively.

Moore Park Golf course is used by all ages and by people from throughout Sydney and they are generally not members of golf clubs but enjoy playing 18 holes on a good course.

There are few 18 hole golf courses of such a standard in Sydney.

If this golf course is 'taken away' it will NEVER come back and will be lost to Sydney forever.

Golf is a growing sport and with the population of Sydney growing there will be fewer public golf course spots available per head.

There is much green space north and east of the golf course which is under utilised as recreational area. (eg all the playing fields across Cleveland St /Anzac Parade are vacant more than they are used.) The golf course is used every day for almost all of the day!!! It is not necessary to shut part of the golf course.

The Council was greedy filling in too much of Waterloo with units...they should have planned better.

The housing "crisis" will improve in time...doing what is proposed is fixing a short term problem.

**Submission  
No. 125**

**THE FUTURE OF MOORE PARK SOUTH – EARLY ENGAGEMENT**

**Name:** Stuart Forbes

**Date received:** 7 April 2024

---

Attached is my submission AGAINST the proposal. I've attached the document in Adobe.pdf format as no instruction on format has been given, and .pdf is commonly preferred.

## Submission AGAINST the Proposal to Reduce Moore Park Golf Course from the current 18 Holes to 9 Holes

Thank you for the opportunity to make a submission against the proposal to reduce the current eighteen-hole championship golf course at Moore Park, Sydney, to a nine-hole golf course and increase the parkland by approximately twenty hectares.

I have read the February 2024 Discussion Paper titled “The Future of Moore Park South a Proposal to Convert Part of Moore Park Golf Course to a New Park”

I am strongly against this proposal for the reasons set out below, and because the arguments set out in the proposal are substantially disingenuous, which I will demonstrate in the following paragraphs.

### The Proposal

The first issue I have with the proposal is that it provides no information about the current usage of the eighteen-hole course. Therefore, becoming misleading by omission, of the benefit of the status quo.

The first few pages of the paper are mostly marketing waffle to suggest the proposal is logical, but makes no argument. Further, references to other documents to endeavour to create the impression of a co-ordinated plan are misleading. An example of this is in the introduction where it says that the population within a five-kilometre radius of the Centennial Parklands will increase by 100,000 people by 2041. This conjecture presented as fact.

The map on page 6 indicates clearly that there are a large number of parks (the green bits) available to the populace of the area, within walking distance of most residences, yet there is no reference to the existence of these parks.

It is stated in this section 3 (Location) that the Centennial Parklands area is 340 hectares, add to this 41.6 hectares Sydney Park, then there is Waterloo Park, and there are also all the little parks within a kilometre or two, Mary O’Brien Reserve, Joynton Park, Nuffield Park, Ralieggh Park, Royal Hospital for Women Park, Green Park, Harmony Park, Frog Hollow Reserve, James Hilder Reserve, Shannon Reserve, Cooper Street Reserve, Eddie Ward Park, Prince Alfred Park, Waterloo Green, McConville Reserve, Perry Park, the Rope Walk Park & Playground, Short St Reserve, Matron Ruby Grant Park, the Drying Green and Redfern Park. This would make the precinct, for access to parklands and recreational space, the best served 5 Km precinct in the Sydney Metropolitan Area.

On the following page there is a time line given regarding the land usage. The entry for 1922 which states the decision to establish a golf course fails to state the purpose for which it was established, that being that the original intent for Moore Park was to create workers’ golf course and a workers’ Golf Club. Moore Park Golf course continues this tradition of being accessible to the entire community with fees as low as \$45.00.

The entry titled ‘Today’ states that “Moore Park Golf Course is a popular public 18-hole course used by golfers of all ages and levels of experience.” What it doesn’t say is that Moore Park is one of the busiest golf courses in the country. Over 500,000 people visit the course each year and over 91,000 rounds are played (80% playing 18 holes), meaning over 200 per day. There is a very large junior golf programme, and last year 555 corporate and special events were hosted. Providing revenue of over \$3.2 million in green fees alone.

The site analysis on page 8 states the obvious and is a litany of failure by the councils and state government, fixable without touching the course, and with even a cursory analysis of the ‘Constraints’ shows an attempt by the authors to make things look worse than they are in truth, as demonstrated by the opinion stated about the treelined and shady walkway on Dacey Avenue, “Dacey Ave is dark, noisy and unattractive to pedestrians and park users”. I note that changes to Dacey Avenue are not in the plan, do they intend to rip out the trees?

Section 4 (the Future of Moore Park) is more disingenuous and meaningless waffle, going on about “advances in technology and other changes, the proposal provides an opportunity to reimagine the golf offering at Moore Park to ensure it is innovative and continues to allow the public to enjoy different forms of the game.” This is laughable when you look at the references example photos, particularly the ‘Short Form Golf’ which ‘reimagines’ the juniors from the academy going from the driving range to a putt-putt course. Even more ludicrous is the last image title ‘A Vibrant Golf Course’, how can half a course be vibrant?

Analysis of the entire section titled ‘Considerations’ suggests that leaving the 20 hectares as a golf course is the best outcome, with the environment advantages of golf courses vs parkland being well documented.

The connection to Aboriginal culture is significantly overstated.

### **Statements by the Premier and Others**

In his announcement of the ‘decision’ Chris Minns (TV News 27 October 2023 (?)) said that there were many other golf courses in the area, which is true if you can afford the membership fees for private courses, most of which have very limited public access or none. With regard to public courses the nearest are the 9-hole Woollahra and 18-hole Eastlakes, both more than 4km as the crow flies, after that its Kogarah, Randwick or Marrickville. Was Minns lying, or just ill informed? Note that all of the twenty-one additional parkland areas mentioned above are closer than the nearest public golf course.

Premier Minns lied on radio when he said he hadn’t been approached by Mayor Moore, which was hours later corrected by his media person, clumsy attempt to amend the record without having to say so to the public. Do you really believe that Minns would ‘forget’ an encounter with Moore?

In the Introduction by Minister Paul Scully he states that “Our plan builds on the NSW Government’s 50-Year Vision for Greater Sydney’s Open Space and Parklands.” The document her refers to is a generic glossy without any content that addresses the Centennial Parklands. The document was produced by the previous Government and is simply a ‘vision’.

### **Alternates**

If Premier Minns is so dedicated to increasing the amount of green space for recreational use, then he might look at the Sydney Water owned block on the corners of Bourke, Mc Evoy and Young Streets, vacant level block with two unused and possibly derelict buildings, of possibly six hectares, and adjacent to the Bourke Street cycleway.

### **Conclusion**

It is a basic tenet of State Government operations that when dealing with State Owned assets a public servant must always seek the highest (value) and best use of the asset. This is particularly relevant when dealing with property assets, and in making a submission regarding such assets, the demonstration of highest and best use is a mandatory.

The highest and best use of land comprising the nine holes of Moore Park Golf Club that are the subject of this proposal is to retain the holes as part of the current 18-hole golf course.

This is because of the significant usage of the course by local people, most of whom walk the course and gain the benefit of that exercise; the environment benefit of retention of flora and fauna, particularly fauna in greater numbers than would occur in a mixed-use parkland; the revenue retention and financing of the upkeep of the facility enabled by it current very high usage.

On purely commercial grounds significant revenue will be lost under this proposal and maintenance related to the proposed parkland will be unfunded, and therefore a cost.



Other advantages are as a venue for corporate events, the potential of mixed use as an entertainment venue, a walking and dog exercise venue as managed by other courses, and with the laying of cart paths an interesting bicycle time-trial course could be created.

Creative thinking, not ideology is the key.

---- end of document ----

## **THE FUTURE OF MOORE PARK SOUTH – EARLY ENGAGEMENT**

**Name:** Cal Ford

**Date received:** 14 March 2024

---

I am writing to present a compelling case for the establishment of a disc golf course at Moore Park South. Disc golf, a rapidly growing sport globally, offers numerous benefits to communities and aligns with the objectives of promoting outdoor recreation, fostering community engagement, and enhancing the utilization of public spaces.

Here are several reasons why Moore Park South is an ideal location for a disc golf course:

**Maximizing Underutilized Space:** Moore Park South currently faces challenges related to underutilization. Establishing a disc golf course would transform this space into an active recreational hub, thereby enhancing its value to the community.

**Inclusive Recreation:** Disc golf is a sport that is accessible to people of all ages, abilities, and backgrounds. It requires minimal equipment and can be enjoyed by individuals or groups, making it an inclusive recreational activity that promotes physical fitness and social interaction.

**Environmental Sustainability:** Disc golf courses can be designed to coexist harmoniously with natural ecosystems. By incorporating sustainable design principles and minimizing environmental impact, a disc golf course at Moore Park South can contribute to the preservation of green spaces and biodiversity in the area.

**Economic Benefits:** The establishment of a disc golf course has the potential to attract visitors to the area, stimulating local businesses such as restaurants, cafes, and retail shops. Additionally, hosting disc golf tournaments and events can generate revenue for the local economy and promote tourism.

**Community Engagement:** Disc golf fosters a sense of community and camaraderie among players. It provides opportunities for organized leagues, competitions, and volunteer initiatives, which can strengthen social bonds and promote civic pride in the Moore Park South area.

**Active Lifestyle Promotion:** As society grapples with sedentary lifestyles and associated health risks, providing accessible recreational opportunities becomes increasingly important. A disc golf course encourages physical activity, outdoor exploration, and healthy living habits among residents of all ages.

**Adaptive Reuse of Space:** Moore Park South presents an opportunity for adaptive reuse, repurposing the land to meet evolving community needs. By converting unused areas into a disc golf course, the government can demonstrate its commitment to responsive urban planning and placemaking.

In conclusion, establishing a disc golf course at Moore Park South represents a strategic investment in the well-being and vitality of the community. By leveraging the benefits of this dynamic sport, the New South Wales Government can enhance public engagement, promote health and wellness, and revitalize underutilized urban spaces.

Thank you for considering this proposal. I am available to provide further information or address any questions you may have.

## **THE FUTURE OF MOORE PARK SOUTH – EARLY ENGAGEMENT**

**Name:** Christine Foster

**Date received:** 10 April 2024

---

I am a former City of Sydney Councillor and sat on the council for nearly 10 years having been initially elected in 2012, then re-elected in 2016, finishing my second term in December 2021.

I strongly object to the NSW Government's proposal to reduce Moore Park Golf Course to 9 holes and urge the government to retain it as an 18-hole course.

In 2020, Lord Mayor Clover Moore launched an all-out attack against the course demanding ratepayers sink \$50,000 into public consultation on her proposal, at the same time admitting she would exclude the thousands of golfers who are using Moore Park from that very process because, in her words, they "would like to keep their privileges". Despite the Lord Mayor's push-polling, 51% of respondents wanted to retain the 18-hole golf course. This is in addition to the 58% of written submissions supporting the retention of 18 holes.

The Lord Mayor's consultation took place after initial community consultation of the Moore Park Masterplan 2040, developed over two years, back in 2015 where the community expressed its strong desire to retain the 18-hole course as indicated in the 700 responses to the public exhibition of the Masterplan.

Those are two clear examples of public consultation processes that have already been undertaken, one of which was aimed at returning a result in the Lord Mayor's favour, where the majority of respondents have expressed a strong wish for the 18-hole public course to be retained.

Even more statistics and facts back up the community's support for the course. Moore Park public golf course accounts for just 45 of the total 360ha in the surrounding Centennial and Moore parklands and is the third most popular in Australia. In the 2021-22 financial year, 77,000 rounds of golf were played at the course, up 17,000 from three years prior. Furthermore, the government even admits how popular it is in its own discussion paper! Page 7 states, 'Moore Park Golf Course is a popular public 18-hole course used by golfers of all ages and levels of experience.' Not only does this contradict the whole premise of the proposal to cut the course in half, it goes completely against the untruthful rhetoric expressed by the Lord Mayor when she says golf is only for the elite. Finally, the golf course contributes around a quarter of the Centennial Parklands revenue, necessary to run and maintain the extensive parklands around Centennial and Moore parks.

The 18-hole Moore Park Golf Course is an historic public open space gem within a stone's throw of the CBD. It is loved and heavily used by locals and visitors alike. It is financially viable and makes a significant contribution to ensuring the surrounding extensive parklands can remain open and accessible by all. It should be maintained in its current for

**THE FUTURE OF MOORE PARK SOUTH – EARLY ENGAGEMENT**

**Name:** Taso Frantzis

**Date received:** 2 April 2024

---

One thing Sydney desperately needs is a vibrant 24 hour entertainment district complete with bars, music and venues.

Sydney has become a night time bore and successive governments have demolished our night scene, spruce up our dead nightlife.

## THE FUTURE OF MOORE PARK SOUTH – EARLY ENGAGEMENT

**Name:** Eric Friedland

**Date received:** 26 February 2024

---

I submit that this is a very sad and unnecessary move.

This area has an over abundance of parklands---Moore Park Behind Sydney Boys/Girls Schools, Playing fields and tennis courts adjacent MPGC, Centennial Park.

Queen's Park, Sydney Park and numerous Pocket Parks throughout Waterloo.Redfern , Zetland and Rosebery. These are generally **underutilised** by the community.

eg. Joynton Park surrounded by apartment buildings!!

Also, MPGC is a heavily patronised Golf Course, mostly by Public players, more than by Members. MPGC has a very proud and long history and you do a great

disrespect to all who have played and supported it, by making it a 9 Hole course!! Championships such as NSW Open were played here. I have been a member.

for 35 years and have forever heard murmurings from Sydney City Council about a "take over". One wonders about the true motivations here.?

## **THE FUTURE OF MOORE PARK SOUTH – EARLY ENGAGEMENT**

**Name:** Carmen Fryer

**Date received:** 9 April 2024

---

Please, please do not take any of MOORE PARK GOLF COURSE !!!!!

Golf is not an elitist sport it is only elitist if golfers can only play on private courses which are economically prohibitive.

Moore Park is a public course and as a senior now I am able to enjoy a round of golf with my friends for only \$35.

There are very few places where one can play on such a beautiful course for such a reasonable price open to all comers.

This is the only course in the vicinity of prestigious courses such as The Lakes, The Australian Royal Sydney and Bonnie Doon which allows golfers who cannot afford such prohibitive joining fees and/or play as a members guest for several hundred dollars per round . AGAIN PROHIBITIVE !!!

Premier Chris Minns you say you are for the people THIS IS NOT A DECISION FOR THE PEOPLE !!!!!!!!!!!!!

Please consider there is practically unused parkland all around Moore park golf course particularly where years ago there was a grass tabogoning hill ... this area is very rarely utilised.

Across the road from Moore Park where the netball courts are there is more parkland that can be used. Added to the fact that when netball games are not being played families can use these courts for some family activities other than netball. This area is also flanked by grassland that is free for people to use at all times.

The area to the north of Sydney Boys High School also free parkland for all residents in the area are able to access.

Not to mention the easy accessibility of centennial park to areas in the vicinity.

Please think carefully before making decisions that are not prudent ones.

Rather than overpopulate the area with high density living and then think about parkland by trying to reclaim Moore park ensure that your future decisions include adequate green space , and instead of reclaiming Moore park use the sparsely used parkland that is already there and not being used effectively .

**PLEASE SAVE MOORE PARK**

**THE FUTURE OF MOORE PARK SOUTH – EARLY ENGAGEMENT**

**Name:** Simon Gallant

**Date received:** 9 April 2024

---

The golf course should be left alone – the current course is well maintained and creates great green space that will not be as well looked after by any new organisation.



## **THE FUTURE OF MOORE PARK SOUTH – EARLY ENGAGEMENT**

**Name:** Johnny Gam

**Date received:** 9 April 2024

---

I would like to share my thoughts on the proposed changes to Moore Park.

I totally agree on the premise that outdoor space is extremely important for all communities. I just don't understand how you change justify ripping apart a beautiful 18 hole public golf course. That services a very large community of golfers that don't have many other options of places to play within their radius.

Also

In relation to open green space. I am personally a big user of centennial park. There is so much open space there any day of the week. Even on busy weekends you can always find huge open empty fields to yourself, if you don't believe me go and see for yourself! People in the surrounding neighbourhoods can easily walk, ride or drive there if they want to use the open space of centennial park.

Ripping away the only nice 18 hole public golf course in the Eastern suburbs feels unnecessary and a bit silly to be completely honest.

I hope that common sense prevails here and this precious asset that's served the local Community for decades is kept intact for future generations to enjoy.

## THE FUTURE OF MOORE PARK SOUTH – EARLY ENGAGEMENT

**Name:** Howard Gelman

**Date received:** 5 March 2024

---

As a 25 year user of Moore, I view the current assault on the Moore Park Golf Course as a misguided attempt to increase already used parklands. Somehow the course has been labelled as a business when it is a public recreation centre. In fact it is parkland already serving a variety of Sydney's population. The course is used by walkers, dog owners, retirees, traddies, recreational groups and is a testament to it affording middle class workers, small business people, and young children the financial ability to play the game without having to join a private club. It also serves both as a gathering place as well as an unparalleled training ground for young players not found in other cities. In Sydney and in most Australian small towns an 18 hole PUBLIC golf course is a must. It's not for the rich or money barons as in the US but Sydney can boast a beautiful public course in the middle of the city affordable and for tourists while maintaining it as a iconic local course. That's a good Aussie egalitarian view.

It must be emphasised that changing it to a 9 hole entity abrogates its position as a competitive venue. It seems that the counsellors from the city don't understand the game of golf. It would be like turning half a set of tennis courts into go get cars. A 9 hole version of the course would not allow handicaps, competitions, membership all necessary to maintain its status. In fact why would one maintain a heritage club house for a course that has no effective goal or standing in the competitive world of golf. Why would a youngster bother since they would have to go to a PRIVATE courses to qualify and develop their skills. The reconfigure illustrations are completely without understanding of the game of golf as well as the social aspects of the sport. Right now, Moore Park Golf shows itself to be in the best condition and at a playing level to match any PRIVATE course in Sydney.

I feel these points and more should be taken up in detail and a group should be formed to combat this misguided and unnecessary use of already existing parkland. Please contact me for further discussion of this topic.

## **THE FUTURE OF MOORE PARK SOUTH – EARLY ENGAGEMENT**

**Name:** Prue Gifford-Ellis

**Date received:** 06 April 2024

---

I am an avid golfer, living in Melbourne and are fortunate enough to be a member, and Women's Captain at Latrobe Golf Club.

I am originally from Sydney and I can remember my dad taking me to Moore Park Golf Course as a small child, where he was a member up until his death.

My dad introduced me to the game of golf at an early age and this was the beginning of a life time passion in the sport of golf. I believe, that if it was not for Moore Park Golf Club, I would not have taken such an interest in the game that I have come to love and respect. It is not only the game of golf, but the friendships I have formed, due to golfing, the support from others, due to meeting them on the golf course and the travel that I have been lucky enough to undertake, playing golf all over the world.

I am so entrenched in golf that I officiate at both the Vic Open, and the Australian Open, and have just been accepted as a scorer for the Women's British Open.

All of my treasured memories involve golf at some level and I thank Moore Park Golf Club for starting me on my journey. There are not many public courses available any more where both women and men are able to start their golfing journey.

I really hope that Moor Park continues to encourage growth in the game, as it did for me all those years back.

**THE FUTURE OF MOORE PARK SOUTH – EARLY ENGAGEMENT**

**Name:** Chris Gilbert

**Date received:** 29 February 2024

---

I have read the proposal re the above and am astonished that the so called planning of the adjacent communities has not taken into account the parkland needs of the new residential developments. Surely when residential projects are approved they individually or collectively should contain provision for appropriate open space for the benefit of the new occupants.

The proposal to create a park on part of the golf course is clearly an afterthought and a reaction to bad planning decisions made in the past. What alternatives have been considered and what changes are proposed to the approval of future residential projects to ensure this “knee jerk” reaction is not repeated?

I am a resident of Balmain and therefore not directly affected by the Moore Park Proposal, but I do believe it is unreasonable that as a result of bad planning decisions of the past, existing sporting amenities should be adversely impacted.

## **THE FUTURE OF MOORE PARK SOUTH – EARLY ENGAGEMENT**

**Name:** Rabinderpal Gill

**Date received:** 2 March and 12 May 2024

---

I reject the proposal to carve out 10 hectares of Moore Park Golf course by the Labour Government to meet their narrow political goals of urban development which takes no consideration into the popularity of the course by the public. Further, there is insufficient infrastructure to support ill conceived urban development in this area. In fact most residents living in the inner city areas use this course for golf contrary to the government view. It is the best public golf course in Australia and constantly used by Professional Golf Tour players for practice. With the unnecessary carve up of the course this will not happen anymore as it will lose its status.

Chris Minns made this decision WITHOUT consulting the public which was very arrogant and completely against any democratic principles which this government has failed to uphold. It is a shame for a Premier to treat his own public with such disdain and arrogance. My Minns should learn what other great cities such as Boston, Houston, etc are doing to address a housing shortage by expanding the greater regions of the cities and not tearing up golf courses.

\*\*\*

I reject the government's push to carve up Moore Park Golf course for residential development. The golf course is much used and needed for local.

**THE FUTURE OF MOORE PARK SOUTH – EARLY ENGAGEMENT**

**Name:** Martin Gillam

**Date received:** 28 February 2024

---

The proposal to scrap half of Moore Park Golf Course is a disgrace. It is one of the most played courses in the WORLD, and is there for the average citizen who can't afford to play at private clubs. As such it is a net earner of income for the taxpayer. There is no NEED to convert half the course to parkland, because the gigantic, underused Centennial Park is literally only a hundred metres from the course. The only reason for this plan being put forward is that the State and City governments allowed developers to build frenetically in the area WITHOUT mandating that they provide green space - now these short sighted governments are penalizing golfers to get the politicians off the hook. The usual appalling policy chaos we expect in NSW.

**THE FUTURE OF MOORE PARK SOUTH – EARLY ENGAGEMENT**

**Name:** Vladimir Goryachev

**Date received:** 6 April 2024

---

Moore Park Golf Course is a valued golf course that provides golfers in Sydney with an activity that is not available in normal public parks!

Isn't Centennial Park a sufficient public park? This is only a stones throw away from Moore Park? However, maybe all the golfers that use Moore Park can go to Centennial Park and play golf there?

**THE FUTURE OF MOORE PARK SOUTH – EARLY ENGAGEMENT**

**Name:** Martin Green

**Date received:** 8 April 2024

---

I am not an activist. I play golf regularly at Moore Park.

I am aware that this is the most utilised Public Golf Course in Australia.

Its proximity to the CBD is unparalleled in Australia. If you cut this Course in half no serious golfer is going to be interested in playing there.

Would you cut a tennis course in half, would you cut a football field in half. No you wouldn't but a handful of non golfing Politicians think this is a great idea.

Alternatively is the program to destroy the golf course that over 100,000 people a year use so that when the remaining half fails that piece can also be taken over.

The number of overseas visitors to Sydney that I have met playing this course you would not believe. But let us destroy the place as a tourist attraction it's only been there for 100 years.

Clearly I am totally against this stupid decision by two stupid Politicians who have lost my vote.



**THE FUTURE OF MOORE PARK SOUTH – EARLY ENGAGEMENT**

**Name:** Kevin Greene

**Date received:** 28 February 2024

---

This is a complete travesty. There are only a few good public courses in all of Sydney, and this one is centrally located and home to a thriving golf community. There's already a gigantic park there - Centennial Park. So why do this?

I couldn't be more disappointed in the proposed change.

**THE FUTURE OF MOORE PARK SOUTH – EARLY ENGAGEMENT**

**Name:** George Gregory

**Date received:** 28 February 2024

---

Not sure why it is necessary to turn what is probably the most accessible as well as affordable PUBLIC golf courses in Sydney into parkland when Centennial Park is across the road and is also literally empty every day of the year.

The entirety of the green space of Centennial Parklands is a ghost town - > this is a huge waste of time and resources, turning what is an actively used space into something that will be empty year round -> and even in summer when people will want to use it it will be empty because everyone prefers the beach.

## THE FUTURE OF MOORE PARK SOUTH – EARLY ENGAGEMENT

**Name:** Bev Griffiths

**Date received:** 10 April 2024

---

Here are five reasons to keep Moore Park Golf Course an 18 hole course.

1. It is a Sydney institution . It was established 108 years ago.
2. 100,000 golfers  use the course each year.
3. It is a vital part of egalitarian Australia au . The players on any playing day include young children playing with 90 year old stalwarts.  
All cultures enjoy sharing their game and their cultural backgrounds .  
All people regardless of gender orientation play regularly in competitions.
4. Accessibility and full 18 hole course provide all Sydneysiders regardless of economic background the chance to become competitive international players . Stephanie Kyriakou on the Womens' golfing circuit is a product of Moore Park Golf Club's Junior golfers programme.
5. An aesthetic loss. The tranquil spacious beauty is scheduled for diminution and partial replacement with the plastic gimcrack culture of water slides, mini golf and the kitsch entertainment that has so spectacularly failed in the nearby Entertainment Quarter, formerly the failed Fox Studios.

A final note - once gone it won't come back - watch the developers move in on the new green parkland.

We trust our governments do act in the best interest of all people.

Removing half of Moore Park Golf Course diminishes the lives of all citizens of Sydney and the short term goal of space for people who live in apartments really robs those people as well as their fellow citizens of much of the wonder that is part of life in this great city.

## THE FUTURE OF MOORE PARK SOUTH – EARLY ENGAGEMENT

**Name:** Stephan Grigoletto

**Date received:** 10 April 2024

---

Thank you for the opportunity to comment on the Future of Moore Park Golf Club. I will try to make it short but to the point and will refer Moore Park Golf Club to MPGC.

1. Comment about the existing club and my plea (please read it 😊)
2. Proposal for the existing ground.
3. Proposal if the council gets its way.
4. Final Comment.

1. Comment about the existing club and my plea:

I'm an average golfer with an average salary. MPGC allows me to play my favourite sport on a normal size course at a reasonable fee I can afford. The majority of courses are private and totally unaffordable and when open to the public, charge exorbitant fees.

As an example, St Michael would set me back \$150. I simply wouldn't be able to play anymore!

Lord Mayor Clover Moore made a comment that MPGC was benefiting the wealthy when she spotted a Rolls Royce in the carpark. She failed to notice all the tradies trucks, vans and workers utes!

I play with retirees, schools and Uni students, Aboriginals and Torres Straight islanders, low income earners, many different backgrounds and ethnicity. This club is alive. It's exciting and it has a pulse. 500'000 visitors a year!

It's also beautifully maintained, considering it's a public course. To halve it will punish the sport and the players. Otherwise why not asking The Lakes Golf Club, the Australian or Bonnie Doon to half theirs? See if they like it.

Property developers have already swallowed all the squash courts in the eastern suburb!

Please, let it be as it is, please!

2. Proposal for the existing ground.

A

Instead of halving the course, I propose to actually expand the sport by including on the existing course a proper Mini Golf Centre, similar to Thornleigh Gold Club.

<https://thornleighgolfcentre.com.au/mini-golf/>

This would promote the sport to the younger generation and give families and the general public something to do on their days off. Everybody loves Put Put! It's entertaining and can be very competitive.

B

I propose a 2 year trial of MPGC "lending" some of their fairways to the public before making a definite decision i.e. from 2026 to 2028.

They could be hosting things like picnics, Freeze Bee Golf, jazz/musical events a certain amount of time per month, but regularly.

Too many options to choose from...

3.Proposal if the council gets its way 😊

The idea is to get people off their backside, right? I propose:

- Permanent Tables Tennis in strategic area
- Permanent Chess Boards in strategic area
- Basket ball courts in strategic area
- Pickleball courts in strategic area

Again too many ideas to mention...

4.Final Comment:

I would have absolute no objection to halve the course if there was no parks around the area. But the whole precinct is already a Mecca of sports and leisure!

A full size and brand new Football Stadium, full size Cricket Ground, full size Tennis Courts, a huge Randwick Race Track, 2 magnificent Queens and Centennial parks including ponds with bird life, bike track, soccer field and horse track.

They are absolute gems!

And you want to chop Moore Park Golf course? Really? That doesn't make any sense, except for the one persons pride.

Last but not least. I hate to say this, but an open public space will become a magnet for homelessness and, mark my words, tent city is looming (and who could blame them).

## **THE FUTURE OF MOORE PARK SOUTH – EARLY ENGAGEMENT**

**Name:** Roger Guillaume

**Date received:** 2 April 2024

---

I am writing to object to the attempt to reconvert the public golf course at Moore Park into a "public space".

This project is based on the misconception that the golf course is not open to the public, which is incorrect. Anyone can enjoy the golf course at any time.

It also labels golf as elitist, which in this case is not true. While Trump's Mar a Lago resort is elitist, Moore Park golf is public, open to all and not even expensive. It costs about \$40 for a round of golf. Clubs can be purchased second-hand for a pittance. This compares favourably to going to the movies (\$26) or to an AFL game (from \$25) and is a bargain compared to a Taylor Swift ticket.

Finally the project pays lip service to the actual geography of Sydney. Moore Park golf sits directly across Centennial Park, by far the largest open space in this part of Sydney. There is no need for more greenspace when neither Centennial Park, nor Moore Park itself, are fully used. It is a better use of public funds to improve the facilities there.

## **THE FUTURE OF MOORE PARK SOUTH – EARLY ENGAGEMENT**

**Name:** Adam Gwynne

**Date received:** 10 April 2024

---

The proposed options have failure written all over them. The only sensible use of the site is its existing use as a golf course.

The site is bounded by Anzac Parade, and South Dowling Street. The site is a sanctuary from the hustle of those roads, but those roads also provide an impenetrable barrier to regular usage of the site by local residents. All of Moore Park is a destination site that suffers for the barriers of these bustling roadways. The lack of parking precludes successful ongoing usage, and as walking destinations for immediate locals they are highly undesirable.

As a former regular user of Moore Park West for soccer, it was highly painful to be scheduled to play there because of the lack of parking, and limited direct public transport options. The light rail partially mitigates this but only for users from suburbs with access. Compared to Queens Park with its local usage, and Centennial Park and Moore Park East with their abundant parking Moore Park South will be an unmitigated, under-used and costly disaster.

The decision to remove an 18-hole public golf course, the third busiest in the country, which runs in great parkland condition year-round, and provides outstanding tree cover and natural heritage is a terrible choice. I have used the course on 3 occasions, each with disadvantaged members of society (pensioners, students, women) who have limited access to other local courses, particularly in holiday periods. In fact between the ages of 20 and 30, Moore Park was the only golf course I played in the CBD/eastern Suburbs and Inner west area as I had moved from South West Sydney and could not afford any of the other local courses. One event was arranged by the university of Sydney sports Union, and the others social rounds also with low-income friends, parents and students.

As a professional who can now access the more expensive options this advocacy is for the more disadvantaged in society. I have started using the Moore Park Driving range with my 6-year old daughter. Her next step will be onto the full course at some point. While we sit on the waiting list for memberships at more exclusive courses, Moore Park is an accessible family-friendly option.

I implore the government to reconsider its decision recognising both what it will lose, and how its proposals are simply placed in the wrong place.

**THE FUTURE OF MOORE PARK SOUTH – EARLY ENGAGEMENT**

**Name:** Michael Haig

**Date received:** 29 February 2024

---

I'm firmly of the view that the gold course should remain 18 holes. The game of gold is 18 holes and if that is not available the prestige of the course is reduced markedly. No doubt what is behind the decision to reduce the size of the Moore Park course is inclusion and diversity, Clover Moore and her Lord Mayorship proximate to the golf course. It is none of Clover Moore's business to foist inclusion and diversity onto everyone. Inclusion and diversity is actually an enemy to Australian society. A society to be that, an agreement between people to behave in certain ways, requires like-minded people, not people of diverse beliefs. Be like-minded in wishing to play golf at Moore Park.



**THE FUTURE OF MOORE PARK SOUTH – EARLY ENGAGEMENT**

**Name:** Leif Hallström

**Date received:** 29 February and 8 April 2024

---

I'm sorry to read that Moore Park Golf might be just a 9- hole course. I live in Sweden and I visit Sydney every second year. My son lives I Surry Hills and I love to play golf at Moore Park Golf. It's so nice to have a Golf course so close to the center of Sydney. This means a possibility to minimize long trips with cars, which is good for the environment. I think that there is no need for increasing the park areas. Moore Park Golf is already a wonderful park area.

\*\*\*

I'm sorry to read that Moore Park Golf might be just a 9- hole course. I live in Sweden and I visit Sydney every second year. My son lives I Surry Hills and I love to play golf at Moore Park Golf. It's so nice to have a Golf course so close to the center of Sydney. This means a possibility to minimize long trips with cars, which is good for the environment. I think that there is no need for increasing the park areas. Moore Park Golf is a wonderful park area. It's an oasis far away from high motor traffic and still it's so close to the center of Sydney. Golf is good for your health!

## **THE FUTURE OF MOORE PARK SOUTH – EARLY ENGAGEMENT**

**Name:** Adam Harris

**Date received:** 29 February 2024

---

I'm making this submission to implore Greater Sydney Parklands to not go through with the plan to redevelop Moore Park into a 9 hole golf course.

Moore Park in its current configuration is by far the best and most accessible 18 hole golf course in central Sydney. I acknowledge there are other public access golf courses in the eastern suburbs, however nothing comes close to the quality of course design, length and width of the holes, quality of the upkeep of the facilities, and the quality of the practise facilities FOR A COMPARABLE PRICE. Turning Moore Park into a 9 hole golf course significantly degrades the quality of the golfing experience. Making the course less appealing will not only force people to drive to other nearby alternatives which is bad enough, it will increase the pressure on nearby club and thus further reducing the quality of experience at those courses. Moore Park has to be one of the busiest courses in Sydney and I don't think that is going to be the case if it is reduced to nine holes. To get something equivalent in Sydney, people need to go to the outer suburbs of Sydney. Moore Park is the crown of public golf in the city. One might argue that courses like St Michaels are as good or better, but it is nearly double the price to play there. This decision reduces access to quality golf for current and aspiring golfers.

In addition to the argument that the golf experience is too good too lose, I believe there is ample public green space around Sydney as it is. Centennial Park is so close to More Park and has such a great offering in terms of facilities and space, it seems unnecessary to lose Moore Park Golf to create more green space. There are so many smaller green spaces dotted throughout the surrounding suburbs, I don't see the need for additional open park land.

Please reconsider this decision.

## **THE FUTURE OF MOORE PARK SOUTH – EARLY ENGAGEMENT**

**Name:** Andy Harris

**Date received:** 28 February 2024

---

The Moore Park 'Discussion Paper' is a damning indictment on how the NSW Government and the City of Sydney led by Clover Moore have repeatedly failed existing and new residents of Sydney over many years.

They have allowed developers such as Meriton, Mirvac etc to profit from the building of thousands of apartments in contrast to the miniscule amounts of 'green space' they were required to provide across Zetland, Waterloo and Green Square. Instead, we have been failed by all sides of government in this area and continue to be failed to this day.

In the discussion paper, the opening foreword from the Minister should have been an apology to the people of Sydney from the NSW Government and the City of Sydney Council. It has been an abject failure of policy and planning and they have let the people of Sydney down repeatedly

The proposal is wrong on many fronts, not least because the golf course in it's current form is always heavily utilised by a cross section of Sydney residents. We should be keeping the parkland and course as-is and mandating new developments have significant, meaningful parkland and green space.

The government should instead be focussing on ensuring that developments they are approving will work for the future residents. There continues to be a failure in leadership of both governments in continuing to allow developers to profit without meeting the needs of residents. This is demonstrated day in day out, not least by Councillor Moore and her team waving through Meriton's plans this month to exclude social housing in their latest development in return for a financial contribution to a social housing fund. They are working in partnership with the likes of Meriton etc instead of working for the communities that the developers are going to be impacting for generations to come.

Sydney deserves better and the NSW Government and City of Sydney have failed and continue to fail its residents.

## **THE FUTURE OF MOORE PARK SOUTH – EARLY ENGAGEMENT**

**Name:** David Harrison

**Date received:** 9 March 2024

---

Here are the reasons why Moore Park should retain an 18 hole golf course.

1. This is an exceptional Public Golf course.
2. It is used by 500,000 players each year and there is for most no alternative.
3. There are many other parks in the area for public use and virtually every one in Sydney has to travel to a park.
4. It is fatuous to say green space is being created as this a very green space.
5. The cost and disruption are totally unnecessary.
6. There no public push for this change.